

WOODEN GUARD RAIL REQUIRED  
ON LEFT

|                            |              |
|----------------------------|--------------|
| Sta. 351124 to Sta. 351148 | Length 24 FT |
| 351148 - 351124            | 24           |
| 351124 - 351100            | 24           |

ON RIGHT

|                            |              |
|----------------------------|--------------|
| Sta. 351124 to Sta. 351148 | Length 24 FT |
| 351148 - 351124            | 24           |
| 351124 - 351100            | 24           |

TOTAL THIS SHEET 672 FT.

NEW CULVERTS REQUIRED

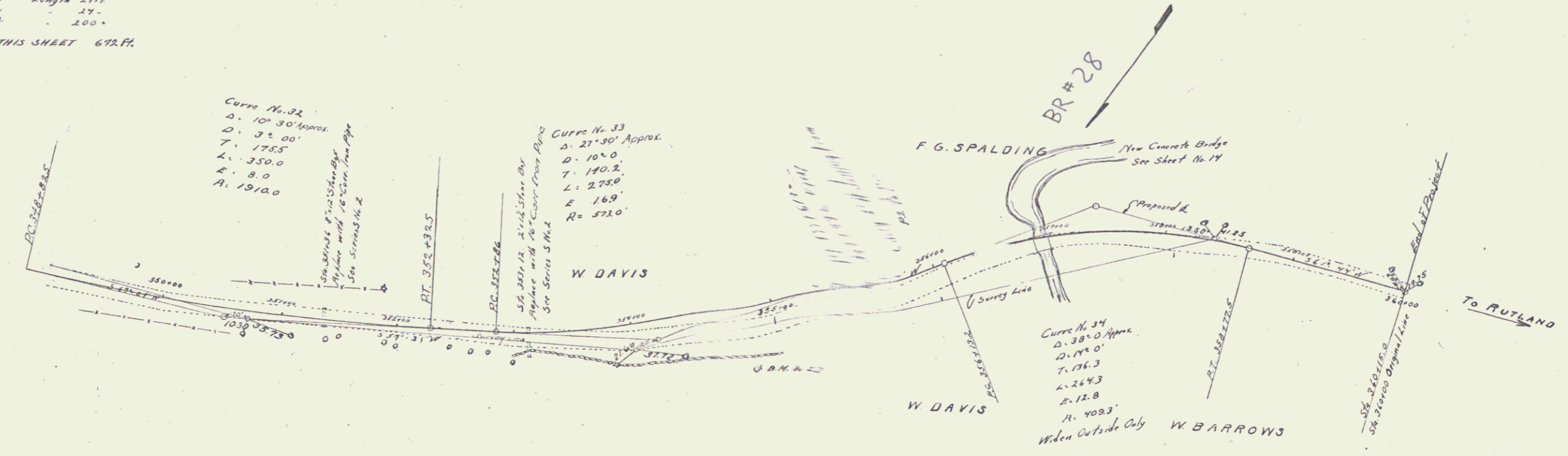
|                 |                    |              |
|-----------------|--------------------|--------------|
| Sta. 351136     | 16" Cast Iron Pipe | Length 20 FT |
| 351136 - 351116 | 1-2 1/2" Concrete  | 18 Cu Yds.   |
| Sta. 353112     | 16" Cast Iron Pipe | Length 34'   |
| 353112 - 353078 | 1-2 1/2" Concrete  | 18 Cu Yds.   |

SUB-B-7

|                            |               |
|----------------------------|---------------|
| Sta. 349100 to Sta. 351100 | Length 200 FT |
|----------------------------|---------------|

W. LEAVINE, JR. ENGINEER

S. W. WARD, JR. CIVIL ENGINEER



Note: Burrens of 1914 will shall be made on grade sheet at Sta. 36015 so as to conform to future road improvements. This work shall be carried out to the satisfaction of the Engineer.

