

WOODEN GUARD RAIL REQUIRED

ON LEFT

Sta. 338+88 to Sta. 339+12	Length 24 FT.
340+20	24 "
341+28	24 "
341+50	24 "
341+72	24 "
341+94	24 "
342+16	24 "
342+38	24 "
342+60	24 "
342+82	24 "
343+04	24 "
343+26	24 "
343+48	24 "
343+70	24 "
343+92	24 "
344+14	24 "
344+36	24 "
344+58	24 "
344+80	24 "
345+02	24 "
345+24	24 "
345+46	24 "
345+68	24 "
345+90	24 "
346+12	24 "
346+34	24 "
346+56	24 "
346+78	24 "
347+00	24 "
347+22	24 "
347+44	24 "
347+66	24 "
347+88	24 "
348+10	24 "
348+32	24 "
348+54	24 "
348+76	24 "
348+98	24 "
349+20	24 "
349+42	24 "
349+64	24 "
349+86	24 "
350+08	24 "
350+30	24 "
350+52	24 "
350+74	24 "
350+96	24 "
351+18	24 "
351+40	24 "
351+62	24 "
351+84	24 "
352+06	24 "
352+28	24 "
352+50	24 "
352+72	24 "
352+94	24 "
353+16	24 "
353+38	24 "
353+60	24 "
353+82	24 "
354+04	24 "
354+26	24 "
354+48	24 "
354+70	24 "
354+92	24 "
355+14	24 "
355+36	24 "
355+58	24 "
355+80	24 "
356+02	24 "
356+24	24 "
356+46	24 "
356+68	24 "
356+90	24 "
357+12	24 "
357+34	24 "
357+56	24 "
357+78	24 "
358+00	24 "
358+22	24 "
358+44	24 "
358+66	24 "
358+88	24 "
359+10	24 "
359+32	24 "
359+54	24 "
359+76	24 "
360+00	24 "

TOTAL THIS SHEET 640 FT.

NEW CULVERTS REQUIRED

Sta. 339+00	16" Cor. Iron Pipe Length 30'
340+30	1-2'-5" Concrete Length 18 Cu Yds.
340+30	16" Cor. Iron Pipe Length 36'
342+10	16" Cor. Iron Pipe Length 34'
344+42	1-2'-5" Concrete Length 18 Cu Yds.
344+42	16" Cor. Iron Pipe Length 30 FT
347+15	1-2'-5" Concrete Length 22 cu yd.
347+15	16" Cor. Iron Pipe Length 30 FT
347+15	1-2'-5" Concrete Length 25 cu yd.

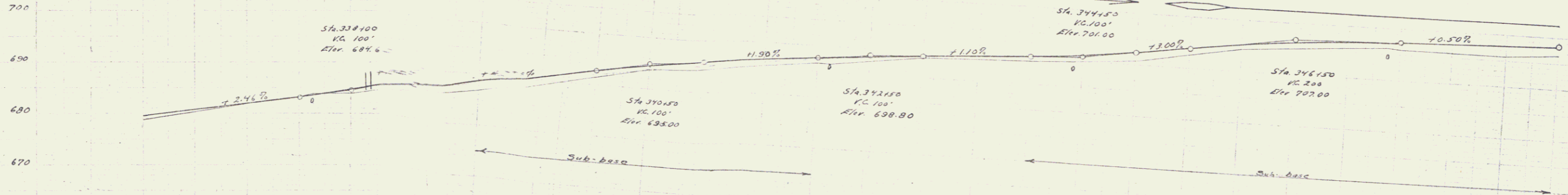
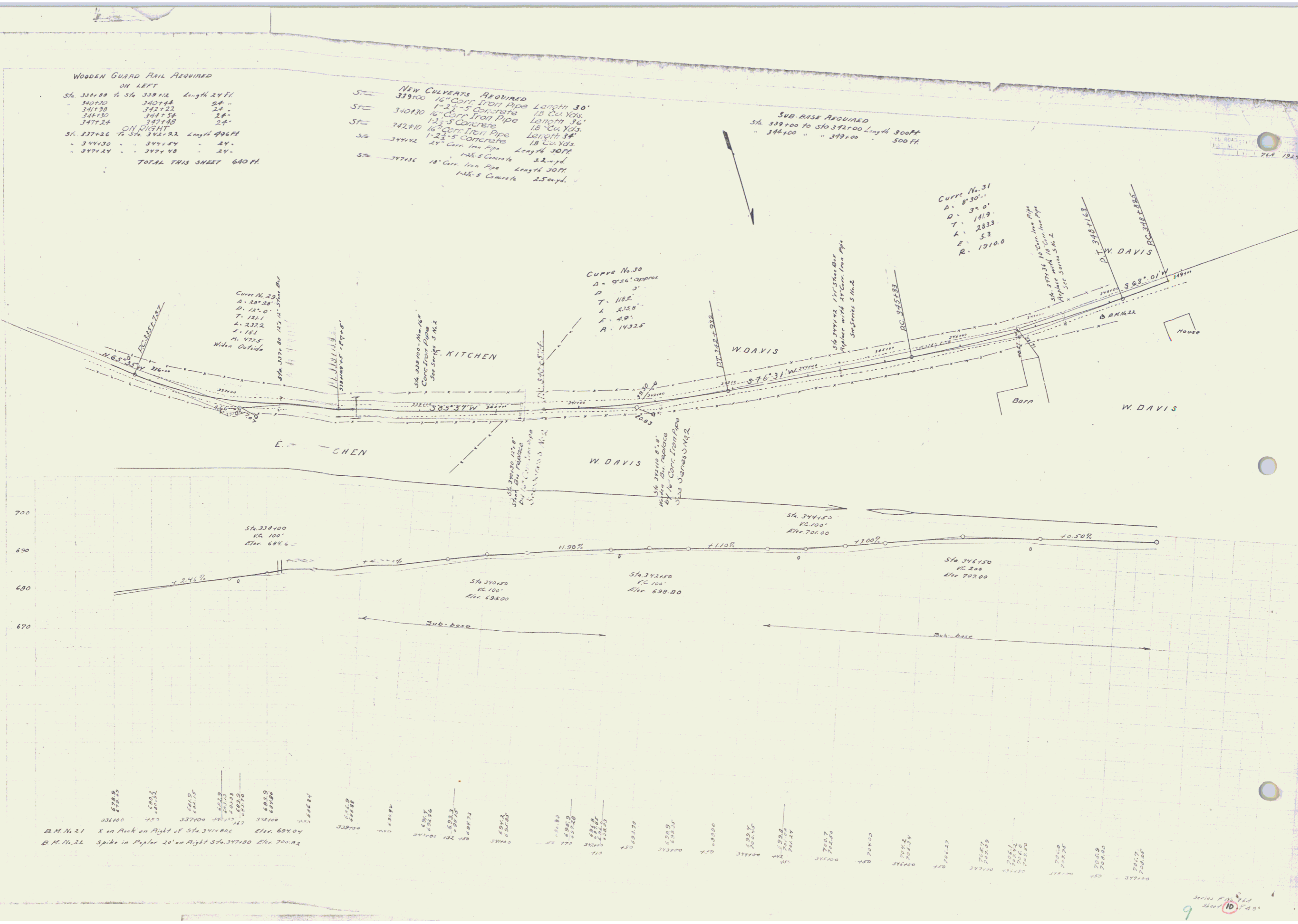
SUB-BASE REQUIRED
Sta. 339+00 to Sta. 342+00 Length 300 FT
Sta. 344+00 " " 349+00 " 500 FT

Curve No. 31
D = 830.0'
P = 32.0'
T = 141.9'
L = 283.3'
E = 5.3'
R = 1910.0'

Curve No. 30
D = 926.0' approx
P = 3'
T = 118.2'
L = 236.4'
E = 4.9'
R = 1432.5'

M. E. WILSON
1924

M. E. WILSON
1924



688.8	689.2	689.6	690.0	690.4	690.8	691.2	691.6	692.0	692.4	692.8	693.2	693.6	694.0	694.4	694.8	695.2	695.6	696.0	696.4	696.8	697.2	697.6	698.0	698.4	698.8	699.2	699.6	700.0	700.4	700.8	701.2	701.6	702.0	702.4	702.8	703.2	703.6	704.0	704.4	704.8	705.2	705.6	706.0	706.4	706.8	707.2	707.6	708.0	708.4	708.8	709.2	709.6	710.0
-------	-------	-------	-------	-------	-------	-------	-------	-------	-------	-------	-------	-------	-------	-------	-------	-------	-------	-------	-------	-------	-------	-------	-------	-------	-------	-------	-------	-------	-------	-------	-------	-------	-------	-------	-------	-------	-------	-------	-------	-------	-------	-------	-------	-------	-------	-------	-------	-------	-------	-------	-------	-------	-------

B.M. 21 X on Arch on Right of Sta. 341+00 Elev. 694.04
B.M. 22 Spike in Paper 20' on Right Sta. 342+00 Elev. 700.82