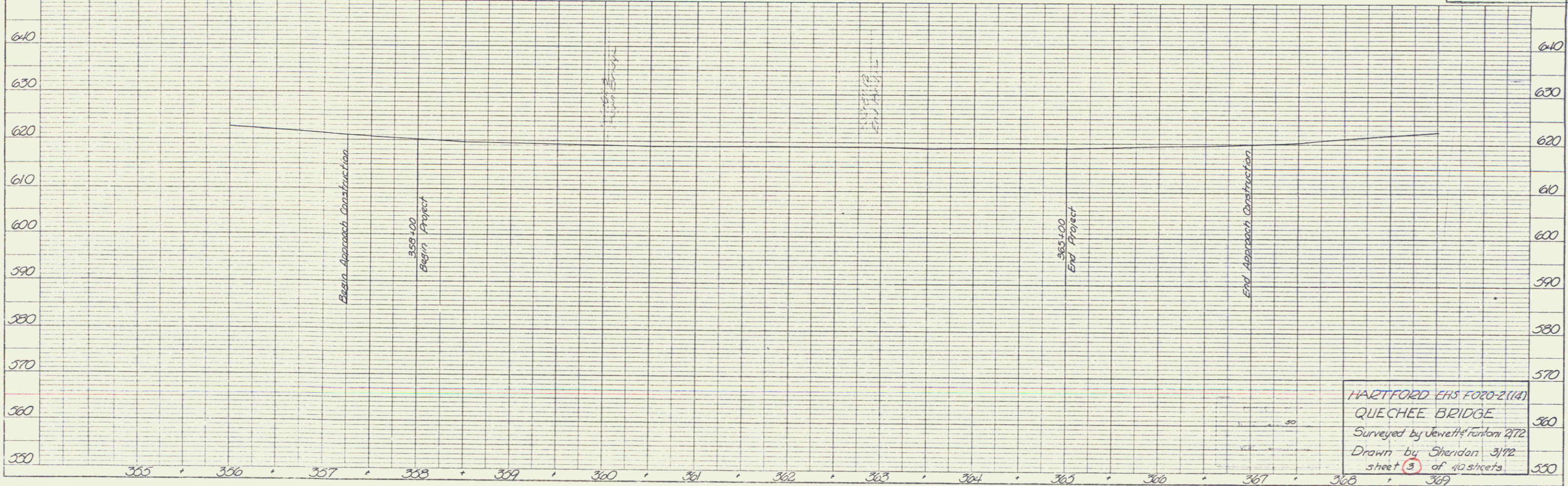
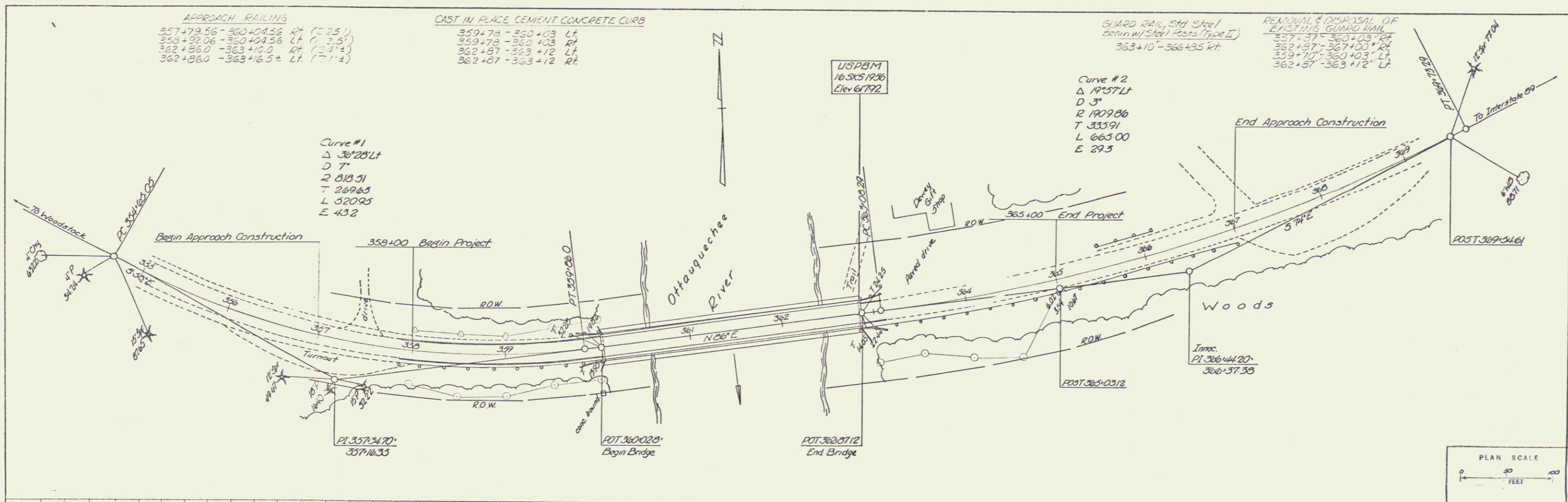


PLAN
 NOTE BOOK NO. 100-100000
 DATE 10/1/1972

PROFILE
 DATE 10/1/1972
 DRAWN BY SHERIDAN 3/1/72



APPROACH RAILINGS
 357+79.56 - 360+04.56 RT (-2.5')
 358+32.06 - 360+04.56 LT (-2.5')
 362+86.0 - 363+10.0 RT (-1.4)
 362+86.0 - 363+16.5 LT (-1.4)

CAST IN PLACE CEMENT CONCRETE CURB
 359+73 - 360+03 LT
 359+73 - 360+03 RT
 362+87 - 363+12 LT
 362+87 - 363+12 RT

GUARD RAIL, STD. 36x/42
 BEGIN W/ STEEL POSTS (TYPE II)
 363+10 - 366+43.5 RT

REMOVAL & DISPOSAL OF EXISTING GUARD RAIL
 357+37 - 360+03 RT
 362+57 - 367+00 RT
 359+70 - 360+03 LT
 362+57 - 363+12 LT

Curve #1
 Δ 30°25'LT
 D 7'
 R 218.31
 T 269.65
 L 520.95
 E 43.2

Curve #2
 Δ 19°57'LT
 D 3'
 R 1909.86
 T 335.91
 L 665.00
 E 29.5

HARTFORD EHS F020-2(14)
 QUECHEE BRIDGE
 Surveyed by Jewett & Norton 2/72
 Drawn by Sheridan 3/72
 sheet 3 of 40 sheets