

INDEX OF SHEETS

1.	Title Page	
2.	Typical, Summary of Quantities, Earthwork and Earthwork Summary	
3.	Plan and Profile Sheet	
4.	Blank	
5.	A-60 Standard Typical for Slopes in Solid Rock Excavation	12/ 6/71
6.	B- 5 Embankment on Earth Slope	12/ 8/71
7.	C- 1 Cast-in-Place Cement Concrete Curb	12/ 5/71
8.	C-2a Drive Entrances w/Cast-in-Place Cement Concrete Curb	12/15/71
9.	E- 1 Federal Aid Construction Identification Signs	12/15/71
10.	E- 2 Road Construction Approach Signs	12/15/71
11.	E- 3 Bridge Construction Approach Signs	12/15/71
12.	E- 6 On-Project Construction Signs	12/15/71
13.	E- 7 Barricades	12/15/71
14.	G- 1 Standard Steel Beam Guard Rail and Anchors	12/ 8/71
15.	G-2a Approach Railing (2 Rail Aluminum) w/Standard Steel Beam Guard Rail	12/ 8/71
16.	G- 9 Approach Railing (2 Rail Aluminum)	
17.	SR-R1-71 (Sheet 1 of 2) Alum. Bridge Railing Details	8/26/71
18.	SR-R2-71 (Sheet 2 of 2) Alum. Bridge Railing Details	10/ 5/71 R
19.	SR-D1-71 Details of W Beam Bridges General Information and Remarks	1/29/72 R
20.	SR-D2-71 Details of W Beam Bridges (B & C)	12/15/71
21.	SR-D6-71 Details of W Beam Bridges (A, B, & C)	12/15/71
22.	SR-D8-71 Details of W Beam Bridges (A)	12/15/71
23.	Blank	
24-25.	Blank	

SR 100 SERIES

27.	Preliminary Information Sheet
28.	Bridge Quantity Sheet
29.	Typical Section
30.	Framing Plan and Stringer Details
31.	Connections and Bracing Details
32.	Railing Details
33.	Joint and Scupper Details
34.	Abutment #1 (West Abut.)
35.	Abutment #2 (East Abut.)
36.	Reinforcing Steel Schedule
37.	Reinforcing Steel Schedule
38.	Cross Section Sheets

STATE OF VERMONT  
DEPARTMENT OF HIGHWAYS



PROPOSED IMPROVEMENT  
**TOWN OF HARTFORD**  
COUNTY OF WINDSOR  
**U.S. ROUTE 4**  
WOODSTOCK-WHITE RIVER JCT. ROAD

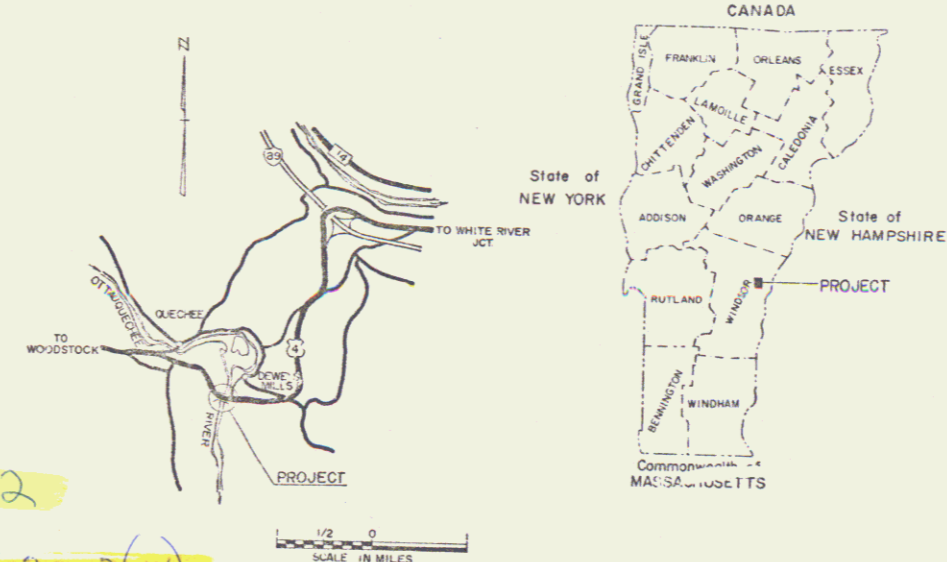
Proj # 99R192

Project EHS F020-2(14)

BEGINNING AT A POINT 3.217 MILES EASTERLY OF THE HARTLAND-HARTFORD TOWN LINE AND EXTENDING EASTERLY 0.133 MILES.

LENGTH OF ROADWAY 415.68 FEET=0.079 MILES  
LENGTH OF BRIDGE 284.32 FEET=0.054 MILES  
LENGTH OF PROJECT 700.00 FEET=0.133 MILES

1972 ADT 3600  
1989 ADT 7870  
1995 DHV 1330  
D 53  
I 6%  
V 50 MPH



RECORD PLANS  
MATERIALS

SUBBASE OF GRAVEL—QUECHEE LAKES PIT—QUECHEE, VT.  
CITUMINOUS CONCRETE—L.M. PIKE—W. LEBANON, N.H.  
CONCRETE CLASS B, SILICONE CONCRETE OVERLAY & CAST IN PLACE CEMENT CONCRETE CURB—MILLER READY MIX CONCRETE, INC.—W. LEBANON, N.H.  
STEEL SUPERSTRUCTURE & SHEAR CONNECTORS—WHITE RIVER STRUCTURAL STEEL CORP.—WHITE RIVER JCT., VT.  
BRIDGE & APPROACH RAILING—MAGNODE PRODUCTS, INC.—REYNOLDS METAL CO.—RICHMOND, VA.  
ELASTOMETRIC EXPANSION JOINT & DAM—WATSON BOWMAN ASSOC., INC.—BUFFALO, N.Y.  
EPOXY BONDING COMPOUND—KISSY EQUIPMENT CO.—WHITE RIVER JCT., VT.  
GUARD RAIL—GRONWOLD FENCE CO.—WILLISTON, VT.  
METAL HAND RAILING—AMERICAN BRIDGE RAILING CORP.—LYNN, MA.  
BRIDGE PAINT—C.E. BRADLEY LABS., INC.—BRATTLEBORO, VT.  
REINFORCING STEEL—BARCROFT & MARTIN, INC.—SO. PORTLAND, ME.  
WATERPROOFING MEMBRANE—VERMONT SEAL COATING, INC.—BARRE, VT.

CONTRACTOR  
MILLER CONSTRUCTION, INC.—WINDSOR, VT.  
RESIDENT ENGINEER—STANLEY E. ROBINSON.  
RECORD PLANS—A. G. SPIDLE.

CONTRACT  
DATED—JUNE 5, 1972.  
STARTED—JUNE 16, 1972.  
COMPLETED—DECEMBER 2, 1972.  
ACCEPTED—DECEMBER 2, 1972.

RIGHT-OF-WAY DIVISION  
TOWN FILE

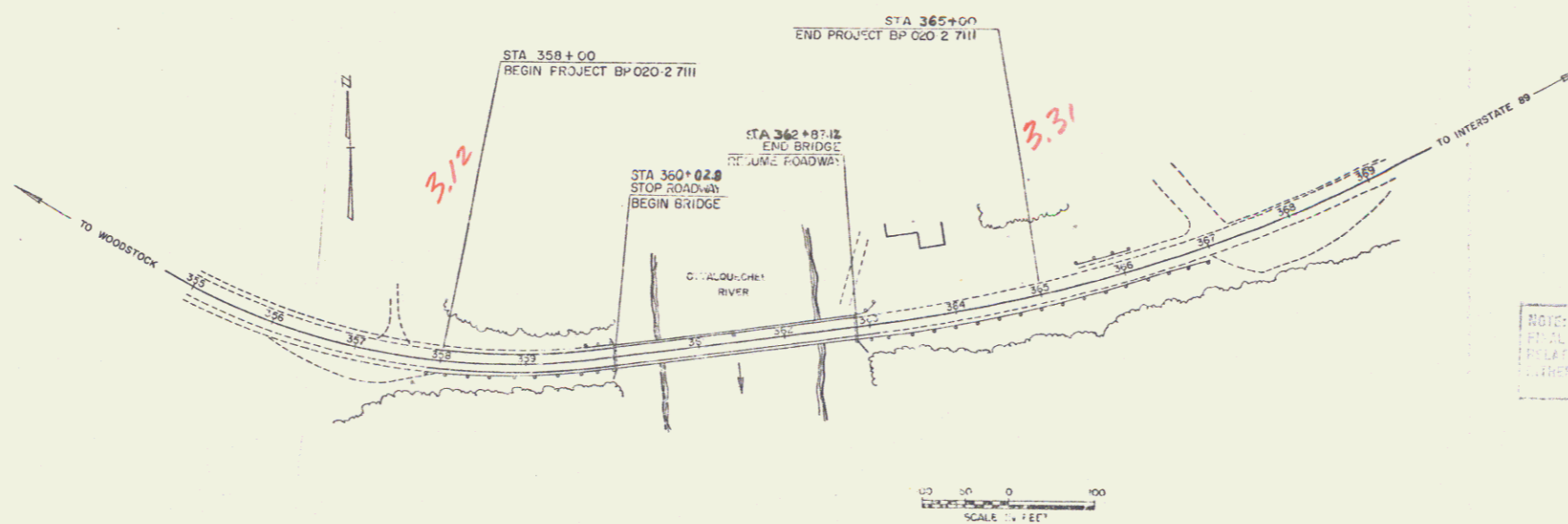
PERPETUAL

NOTE: ANY FURTHER INFORMATION CONCERNING MATERIAL QUANTITIES, MATERIALS OR OTHER DETAILS PERTAINING TO THIS PROJECT MAY BE OBTAINED FROM THE FIELD OFFICE OF THE DISTRICT ENGINEER.  
Town of U.S. 4  
(To Be Returned To R.O.W. Division)

CONVENTIONAL SIGNS

COUNTY LINE	---
TOWN LINE	- - - -
LIMITS OF ACCESS	○
POINT OF ACCESS	X
FENCE LINE	---
STONE WALL	---
TRAVELER WAY	---
GUARD RAIL	---
RAILROAD	---
SURVEY LINE	---
CULVERT	---
POWER POLE	○
TELEPHONE POLE	○
TREES	○
F.A. CONST. IDENTIFICATION SIGNS	▲
PROPERTY LINE	---
ROW TAKING LINE	---
SLOPE RIGHTS	---
TOP OF CUT	---
TOE OF SLOPE	---

DESIGNED BY  
A. G. SPIDLE  
MILLER CONSTRUCTION, INC.  
WINDSOR, VT.  
COMPLETED—DECEMBER 2, 1972.



These plans are subject to such revisions as may be required by the Federal Highway Administration or the Chief Engineer.  
Construction is to be carried out in accordance with the plans and the Standard Specifications for Highway and Bridge Construction dated January 3, 1972, as approved by the Federal Highway Administration and special provisions as are incorporated in these plans.

SUBMITTED BY ORDER OF THE STATE HIGHWAY BOARD

APPROVED: E. W. O'Leary DATE 4/14/80  
CHIEF ENGINEER

DEPARTMENT OF TRANSPORTATION  
FEDERAL HIGHWAY ADMINISTRATION

APPROVED: \_\_\_\_\_ DATE \_\_\_\_\_  
DIVISION ENGINEER

PROJECT EHS F 020-2(14)

SHEET 1 OF 4 SHEETS

SRS 12/17/70