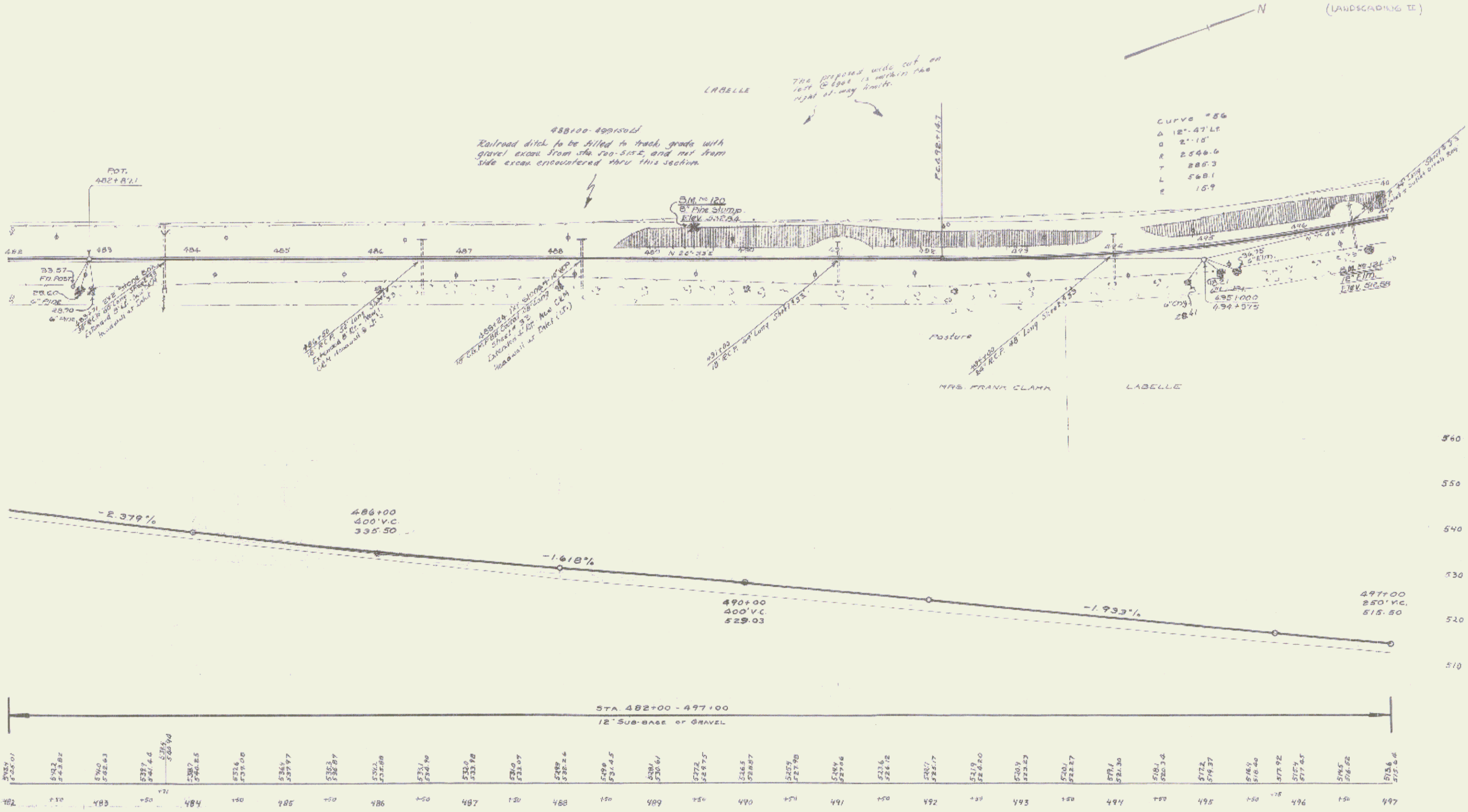


(LANDSCAPING II)



BM 120 Spike on top 8" Fine stump 3/4" dia Sta 489+45 Elev 532.84
 BM 121 Spike in Root 12" Elm 2 1/2" dia Sta 496+75 Elev 512.68

LANDSCAPING
 SERIES F No 108 C
 SHEET 20 OF 34