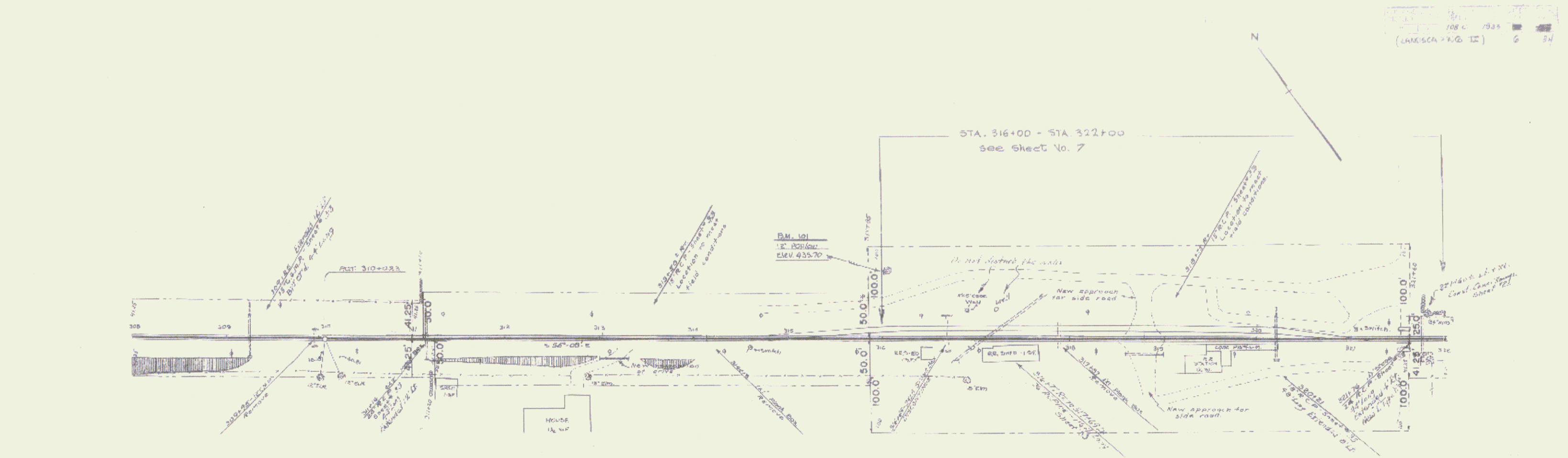
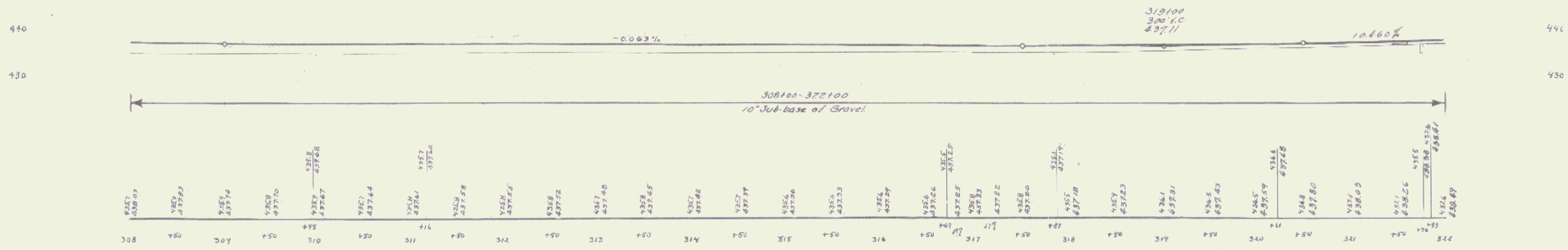


PROPOSED
LANDSCAPING

PLAN VIEW



QUANTITIES AS COMPUTED
 SHOWN THAT BETWEEN STA 316+00 AND 322+00
 BOROUGH IS REQUIRED AS FOLLOWS:
 FOR ROADWAY 222400 - 322100 4002 cys
 FOR ROAD APPROACH 30000 cys
 TOTAL BOROUGH 252200 cys



B.M. 101 Spike in Root of a 12" Pop. 72" lt. of Sta 316+05 Elev. 435.70

(LANDSCAPING II)
 SERIES F NO 1000
 SHEET 6 OF 34