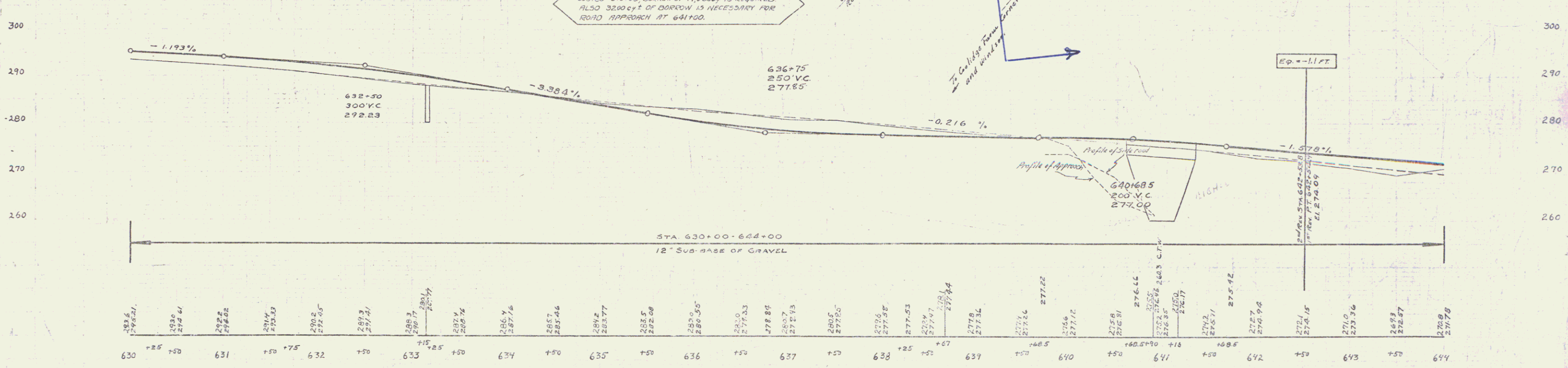
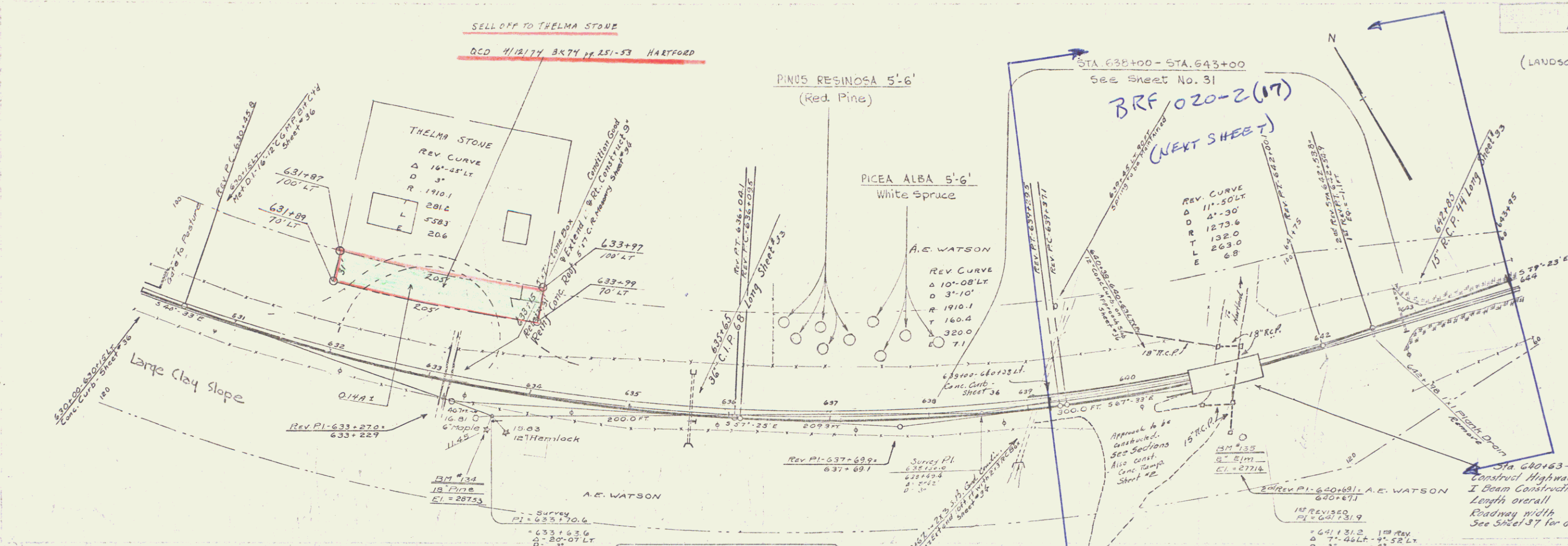


(LANDSCAPING II)



B.M. 124. Spike in Root of Pine 30' W of Sta. 633+64 Elev. 202.53  
 B.M. 135. Spike in Root of Elm 66' W of Sta. 641+0 Elev. 277.14

MP 8.40  
 RIGHT-OF-WAY DIVISION  
 TOWN FILE  
 PERPETUAL  
 Town of USA  
 (To Be Returned To R.O.W. Division)

(LANDSCAPING II)  
 SERIES F No 108-C  
 SHEET 27 OF 34