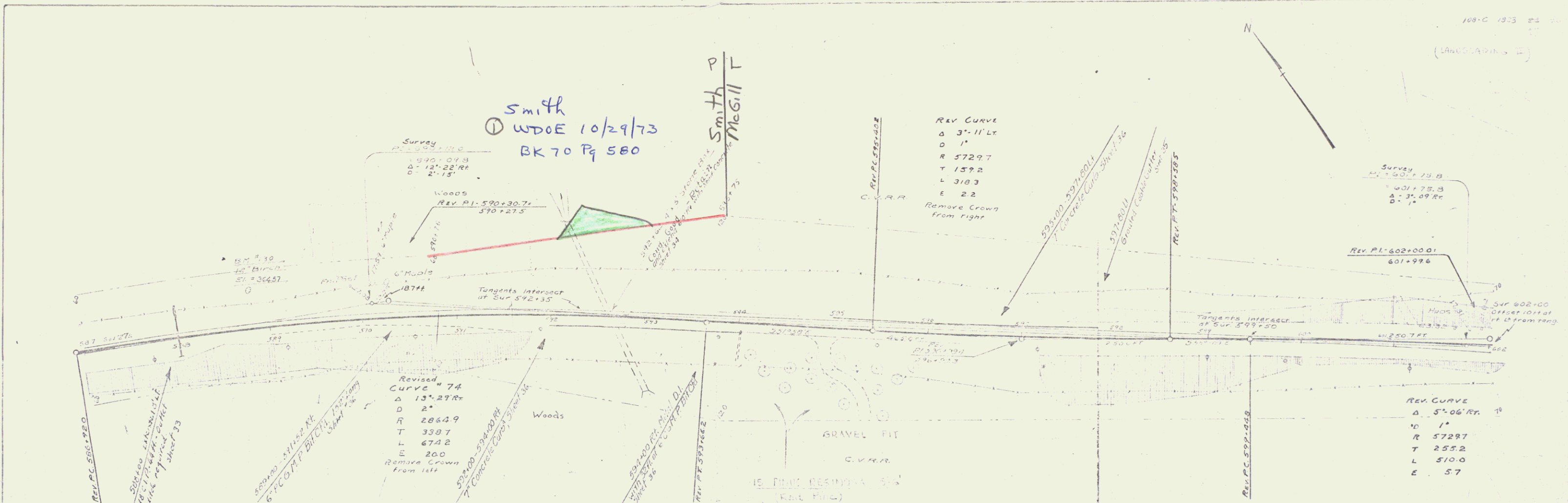


Smith
 WDOE 10/29/73
 BK 70 Pg 580

Smith
 McGill



Revised
 CURVE # 74
 Δ 13° 29' R
 D 2'
 R 2864.9
 T 338.7
 L 674.2
 E 200
 Remove Crown
 from left

REV CURVE
 Δ 3° 11' L
 D 1'
 R 5729.7
 T 159.2
 L 318.3
 E 22
 Remove Crown
 from right

REV CURVE
 Δ 5° 06' R
 D 1'
 R 5729.7
 T 255.2
 L 510.0
 E 57

