

Station Left Right  
282+64 - 1

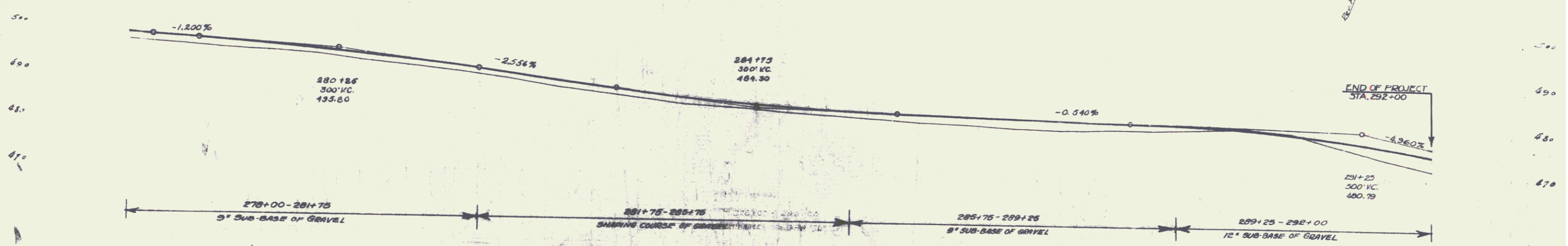
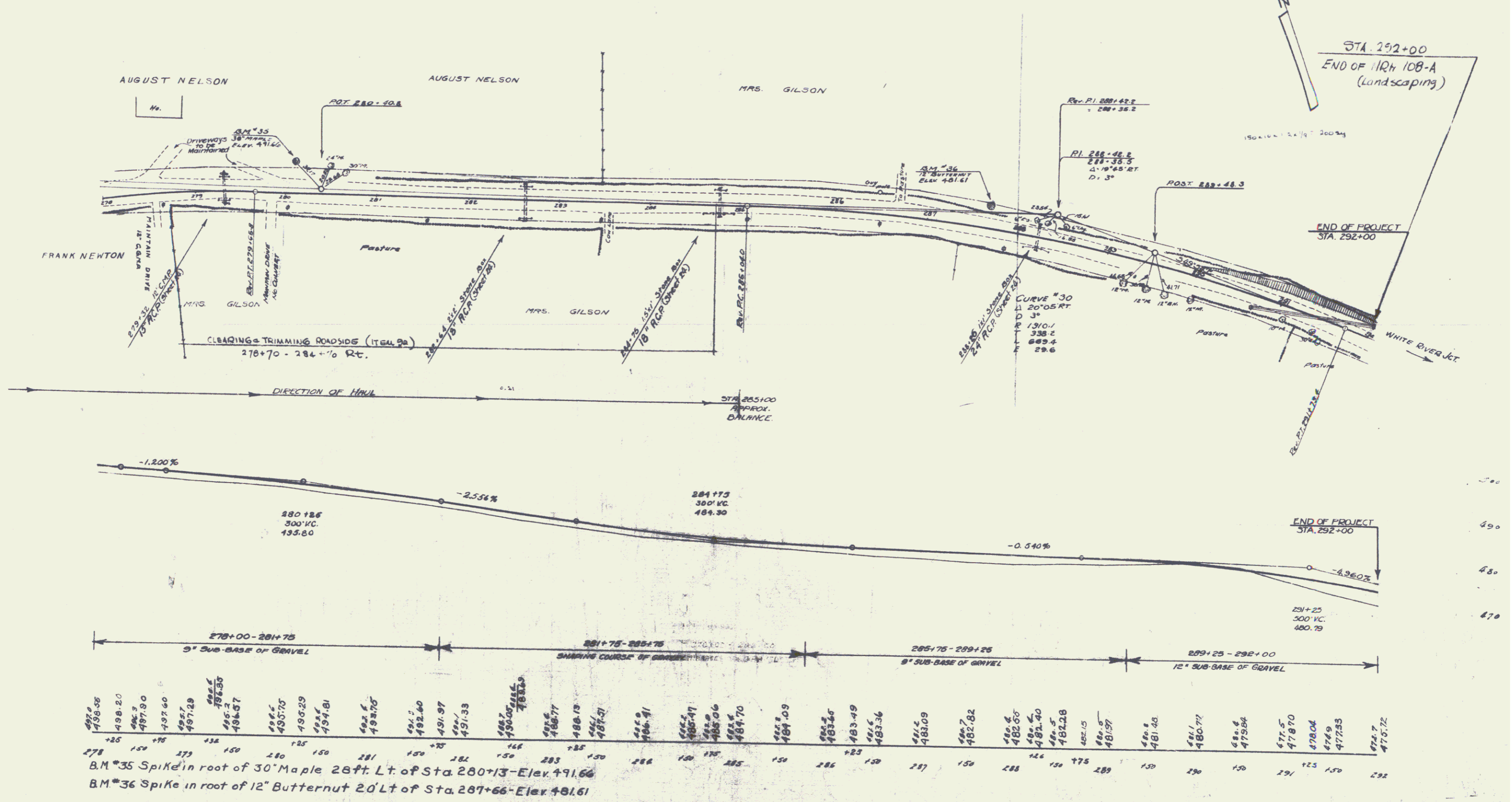
WOOD GUARD RAIL  
Culv. Station Left Right

279+32	26'	28'
282+64	26'	28'
284+75	26'	28'
288+26	26'	28'

REINFORCED CONCRETE PIPE CULVERTS

Station	Chain	Length	Conc. A	CPM	Bar Steel
279+32	15'	24'		27	
282+64	10'	40'		32	
284+75	10'	40'		35	
288+26	26'	40'		34	

N.K.H.  
1088  
(LANDSCAPE) 1985 21 2



Station	278+00 - 281+75	281+75 - 285+75	285+75 - 289+25	289+25 - 292+00
Sub-base	9" SUB-BASE OF GRAVEL	SHARPING COURSE OF GRAVEL	9" SUB-BASE OF GRAVEL	12" SUB-BASE OF GRAVEL
278	496.66			
279	498.20			
280	496.9			
281	497.90			
282	497.60			
283	497.29			
284	496.5			
285	495.35			
286	495.2			
287	494.57			
288	494.5			
289	493.75			
290	493.29			
291	492.6			
292	491.97			
293	491.33			
294	490.7			
295	489.9			
296	489.1			
297	488.13			
298	487.2			
299	486.4			
300	485.49			
301	484.56			
302	483.69			
303	482.82			
304	482.0			
305	481.40			
306	480.8			
307	480.28			
308	479.75			
309	479.2			
310	478.6			
311	478.04			
312	477.5			
313	477.0			
314	476.5			
315	476.0			
316	475.5			
317	475.0			
318	474.5			
319	474.0			
320	473.5			
321	473.0			
322	472.5			
323	472.0			
324	471.5			
325	471.0			
326	470.5			
327	470.0			
328	469.5			
329	469.0			
330	468.5			
331	468.0			
332	467.5			
333	467.0			
334	466.5			
335	466.0			
336	465.5			
337	465.0			
338	464.5			
339	464.0			
340	463.5			
341	463.0			
342	462.5			
343	462.0			
344	461.5			
345	461.0			
346	460.5			
347	460.0			
348	459.5			
349	459.0			
350	458.5			
351	458.0			
352	457.5			
353	457.0			
354	456.5			
355	456.0			
356	455.5			
357	455.0			
358	454.5			
359	454.0			
360	453.5			
361	453.0			
362	452.5			
363	452.0			
364	451.5			
365	451.0			
366	450.5			
367	450.0			
368	449.5			
369	449.0			
370	448.5			
371	448.0			
372	447.5			
373	447.0			
374	446.5			
375	446.0			
376	445.5			
377	445.0			
378	444.5			
379	444.0			
380	443.5			
381	443.0			
382	442.5			
383	442.0			
384	441.5			
385	441.0			
386	440.5			
387	440.0			
388	439.5			
389	439.0			
390	438.5			
391	438.0			
392	437.5			
393	437.0			
394	436.5			
395	436.0			
396	435.5			
397	435.0			
398	434.5			
399	434.0			
400	433.5			
401	433.0			
402	432.5			
403	432.0			
404	431.5			
405	431.0			
406	430.5			
407	430.0			
408	429.5			
409	429.0			
410	428.5			
411	428.0			
412	427.5			
413	427.0			
414	426.5			
415	426.0			
416	425.5			
417	425.0			
418	424.5			
419	424.0			
420	423.5			
421	423.0			
422	422.5			
423	422.0			
424	421.5			
425	421.0			
426	420.5			
427	420.0			
428	419.5			
429	419.0			
430	418.5			
431	418.0			
432	417.5			
433	417.0			
434	416.5			
435	416.0			
436	415.5			
437	415.0			
438	414.5			
439	414.0			
440	413.5			
441	413.0			
442	412.5			
443	412.0			
444	411.5			
445	411.0			
446	410.5			
447	410.0			
448	409.5			
449	409.0			
450	408.5			
451	408.0			
452	407.5			
453	407.0			
454	406.5			
455	406.0			
456	405.5			
457	405.0			
458	404.5			
459	404.0			
460	403.5			
461	403.0			
462	402.5			
463	402.0			
464	401.5			
465	401.0			
466	400.5			
467	400.0			
468	399.5			
469	399.0			
470	398.5			
471	398.0			
472	397.5			
473	397.0			
474	396.5			
475	396.0			
476	395.5			
477	395.0			
478	394.5			
479	394.0			
480	393.5			
481	393.0			
482	392.5			
483	392.0			
484	391.5			
485	391.0			
486	390.5			
487	390.0			
488	389.5			
489	389.0			
490	388.5			
491	388.0			
492	387.5			
493	387.0			
494	386.5			
495	386.0			
496	385.5			
497	385.0			
498	384.5			
499	384.0			
500	383.5			
501	383.0			
502	382.5			
503	382.0			
504	381.5			
505	381.0			
506	380.5			
507	380.0			
508	379.5			
509	379.0			
510	378.5			
511	378.0			
512	377.5			
513	377.0			
514	376.5			
515	376.0			
516	375.5			
517	375.0			
518	374.5			
519	374.0			
520	373.5			
521	373.0			
522	372.5			
523	372.0			
524	371.5			
525	371.0			
526	370.5			
527	370.0			
528	369.5			
529	369.0			
530	368.5			
531	368.0			
532	367.5			
533	367.0			
534	366.5			
535	366.0			
536	365.5			
537	365.0			
538	364.5			
539	364.0			
540	363.5			
541	363.0			
542	362.5			
543	362.0			
544	361.5			
545	361.0			
546	360.5			
547	360.0			
548	359.5			
549	359.0			
550	358.5			
551	358.0			
552	357.5			
553	357.0			
554	356.5			
555	356.0			
556	355.5			
557	355.0			
558	354.5			
559	354.0			
560	353.5			
561	353.0			
562	352.5			
563	352.0			
564	351.5			
565	351.0			
566	350.5			
567	350.0			
568	349.5			
569	349.0			
570	348.5			
571	348.0			
572	347.5			
573	347.0			
574	346.5			
575	346.0			
576	345.5			
577	345.0			
578	344.5			
579	344.0			
580	343.5			
581	343.0			
582	342.5			
583	342.0			
584	341.5			
585	341.0			
586	340.5			
587	340.0			
588	339.5			
589	339.0			
590	338.5			
591	338.0			
592	337.5			
593	337.0			
594	336.5			
595	336.0			
596	335.5			
597	335.0			
598	334.5			
599	334.0			
600	333.5</			