

GUIDE POSTS OF WOOD	
Station	Left
216+07	1
225+27	1

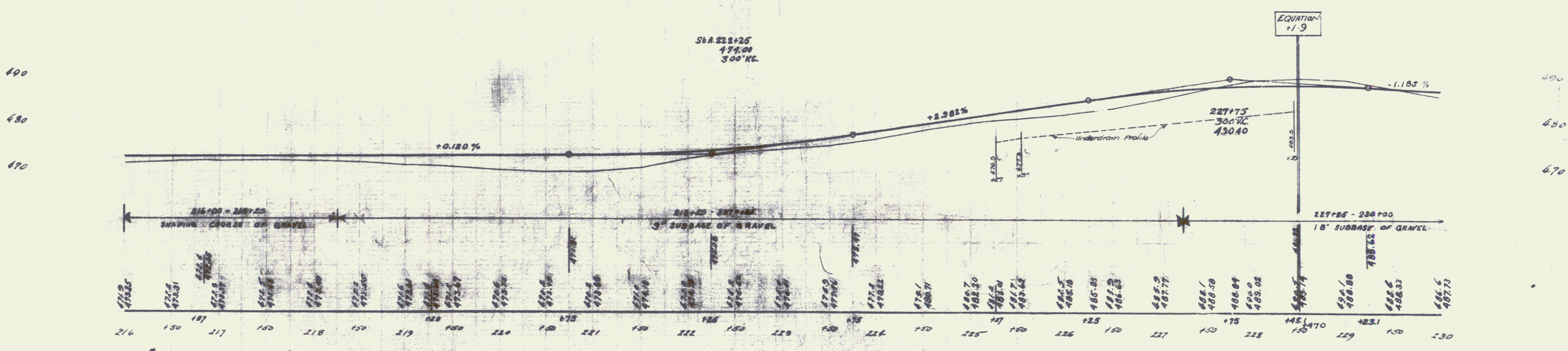
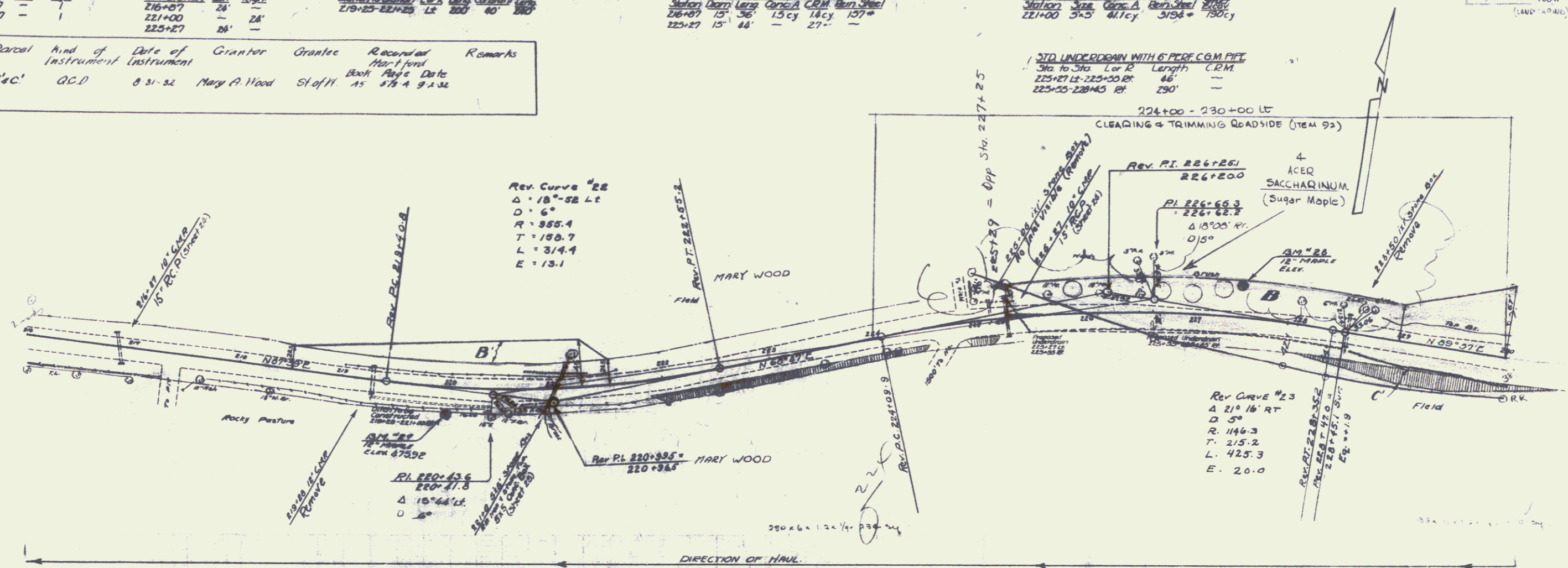
WOOD GUARD RAIL	
Curve Station	Left
216+07	2A
225+27	2A

CABLE GUARD RAIL	
Station	Left
219+25	2B
221+25	2B

REINFORCED CONCRETE PIPE CULVERT	
Station	Left
226+07	15'
225+27	15'

REINFORCED CONCRETE BOX CULVERT	
Station	Left
221+00	5x5
224+00	5x5

Parcel	Kind of Instrument	Date of Grant	Grantor	Grantee	Recorded Map/Plan	Book	Page	Date	Remarks
Z.	B'c'	Q.C.D.	8-31-32	Mary A Wood	Staff 11	15	175	9.2.32	



BM #27 Spike in root of 12" Maple - 25 ft. Rt. of Sta. 219+98 - Elev. 475.92  
 BM #28 Spike in root of 12" Maple - 27 ft. Lt. of Sta. 227+44 - Elev. 486.66