

GUIDE POSTS OF WOOD

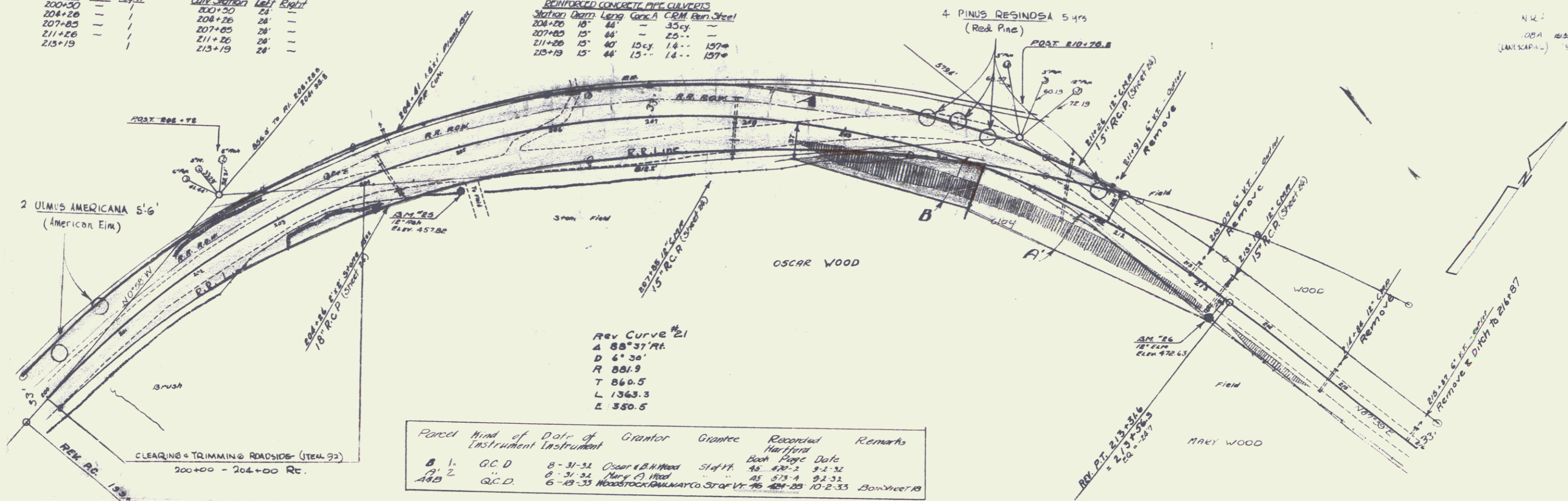
Station	Left	Right
200+30	—	—
204+20	—	—
207+85	—	—
211+26	—	—
215+19	—	—

WOOD CURBED RAIL

Curve Station	Left	Right
200+30	24	—
204+20	28	—
207+85	28	—
211+26	28	—
215+19	28	—

REINFORCED CONCRETE PIPE CULVERTS

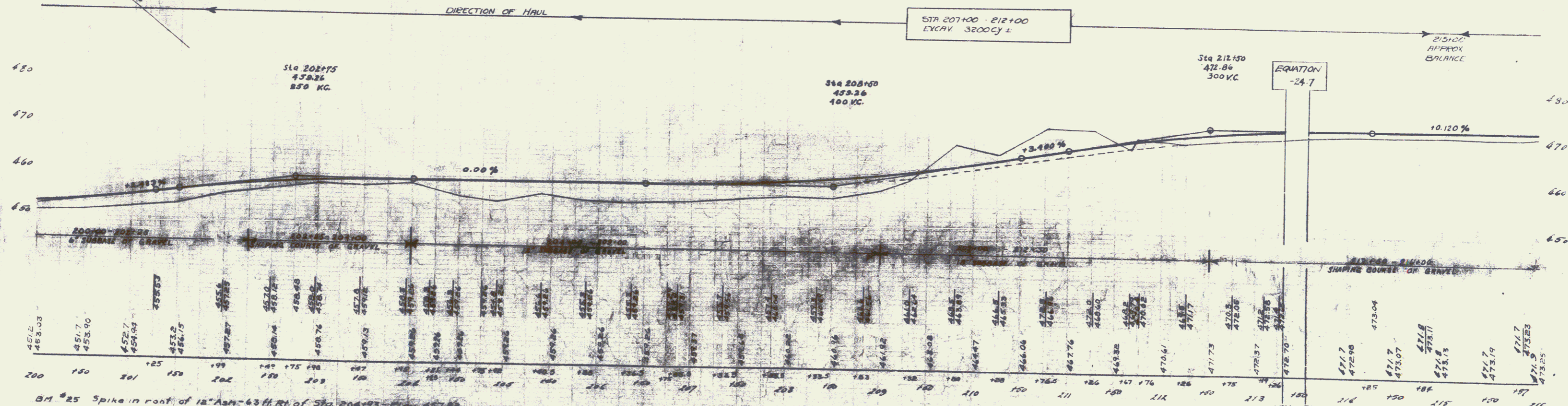
Station	Open	Length	Curve	CRH	Rein. Steel
204+20	15'	44'	—	35cy	—
207+85	15'	44'	—	25cy	—
211+20	15'	40'	15cy	14	157m
215+19	15'	44'	15cy	14	157m



REV. CURVE #21
 A 88°37' RT
 D 6°30'
 R 881.9
 T 860.5
 L 1363.3
 E 350.5

Parcel kind of Data of Grantor Grantee Recorded Remarks
 Instrument Instrument Hartford

No.	Q.C.D.	D.	Grantor	Grantee	Recorded	Remarks
1	Q.C.D.	8-31-51	Oscar W. Wood	State	42	42-2 9-1-52
2	Q.C.D.	8-31-51	Mary A. Wood	State	45	45-4 9-1-52
448	Q.C.D.	6-18-53	Woodstock Building Co.	State	48	48-105 10-2-53



BM #25 Spike in root of 12" Ash - 63 ft Rt of Sta. 204+93 - Elev. 457.66
 BM #26 Spike in root of 12" Elm - 26 ft Rt of Sta. 213+44 - Elev. 472.65

SERIES RH 100-A (LANDSCAPING)
 SHEET # OF 21