

GUIDE POSTS OF WOOD		
STATION	LEFT	RIGHT
191+15	-	1
194+74	-	1
197+80	-	1

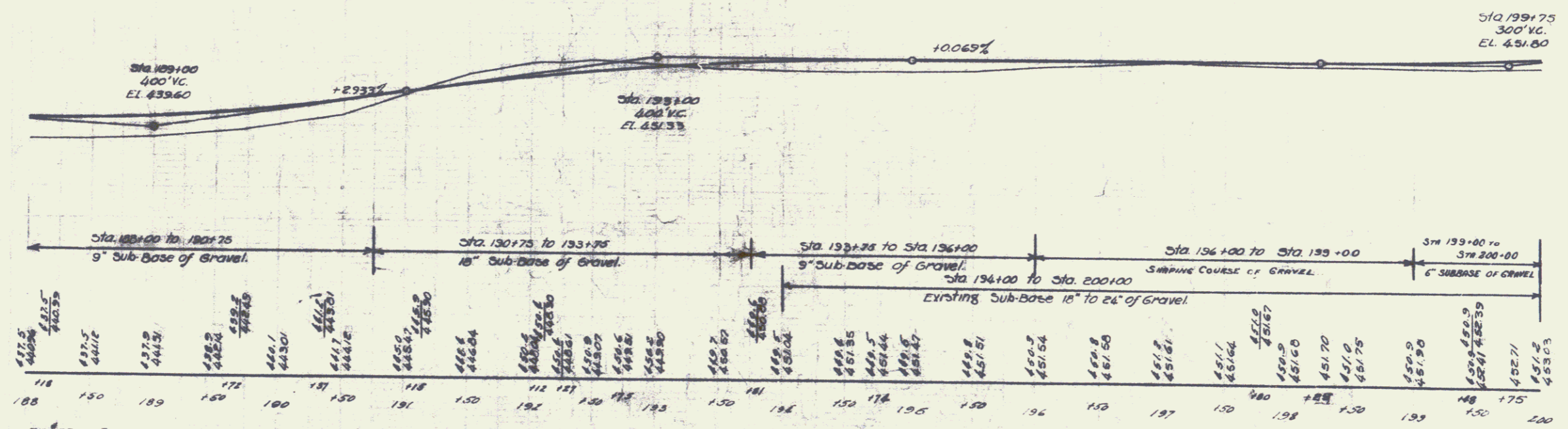
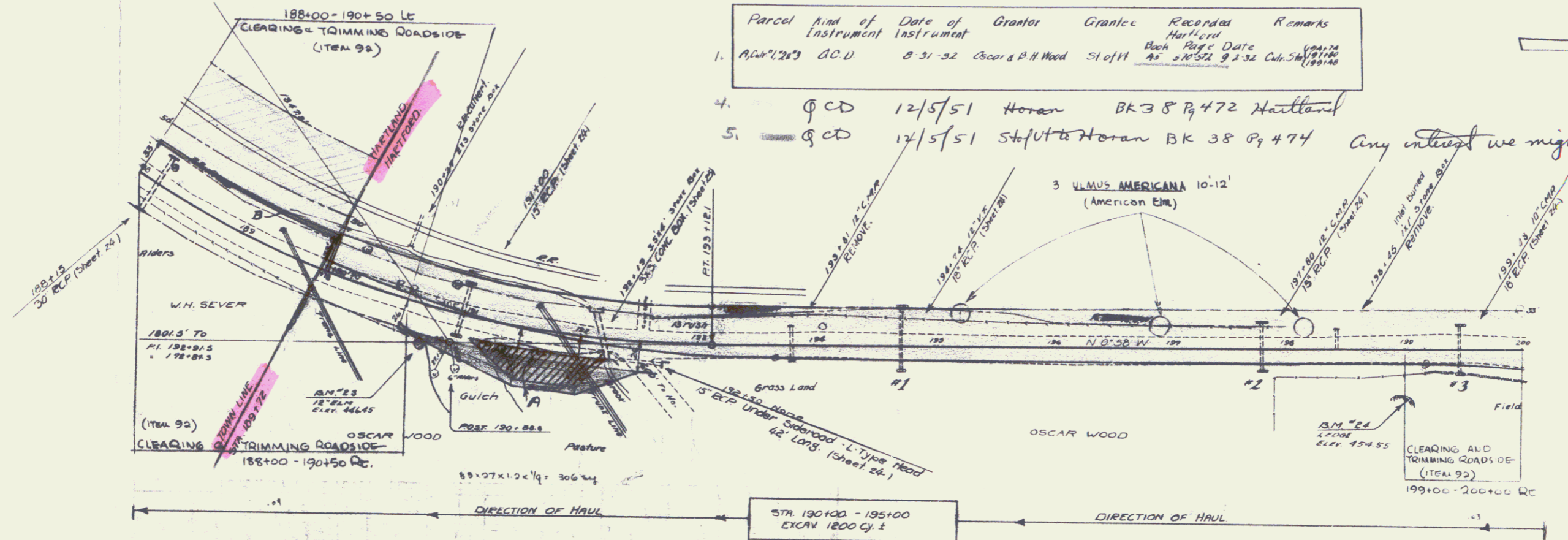
WOOD GUARD RAIL		
CULV. STATION	LEFT	RIGHT
188+15	24'	24'
191+15	24'	24'
192+19	24'	24'
197+80	24'	24'
199+40	24'	24'

CABLE GUARD RAIL			
STATION TO STATION	LOPE	CONSTANT	PAY LENS
196+30 - 196+90	40'	40'	90'

REINFORCED CONCRETE BOX CULVERTS			
STATION	SIZE	CONC.	REINF. STEEL
192+19	3x3	10c	1330#

REINFORCED CONCRETE PIPE CULVERTS			
STATION	SIZE	LENG.	CREM.
188+15	30"	52'	60 cy.
191+00	15"	44'	27 "
191+50 et	15"	40'	41 "
194+74	18"	52'	35 "
197+80	15"	40'	27 "
199+40	10"	44'	35 "

Parcel	Kind of Instrument	Date of Grant	Grantor	Grantee	Records	Remarks
1.	Map 1289	8-31-32	Oscar P.H. Wood	Slooff	Book Page Date	194+74 As 21052 9 2 32 Cul. 34 199+40
4.	Q CD	12/5/51	Horan	BK 38 Pg 472	Hartford	
5.	Q CD	12/5/51	Stafut to Horan	BK 38 Pg 474		Any interest we might ever had had.



BN #23 Spike in root of 12" Elm - 30 ft. Rt. of Sta. 190+72 - Elev. 446.45
 BN #24 Spot on ledge in field - 40 ft. Rt. of Sta. 199+00 - Elev. 454.55