

**CHECK POSTS OF WOOD**

Station	Left	Right
282+46	1	
281+32	1	
281+32	1	

**WOOD CROWN DATA**

Station	Left	Right
280+32	20	24
282+46	28	24
284+72	24	24
286+20	24	24
286+33		24

**REINFORCED CONCRETE PIPE CURVES**

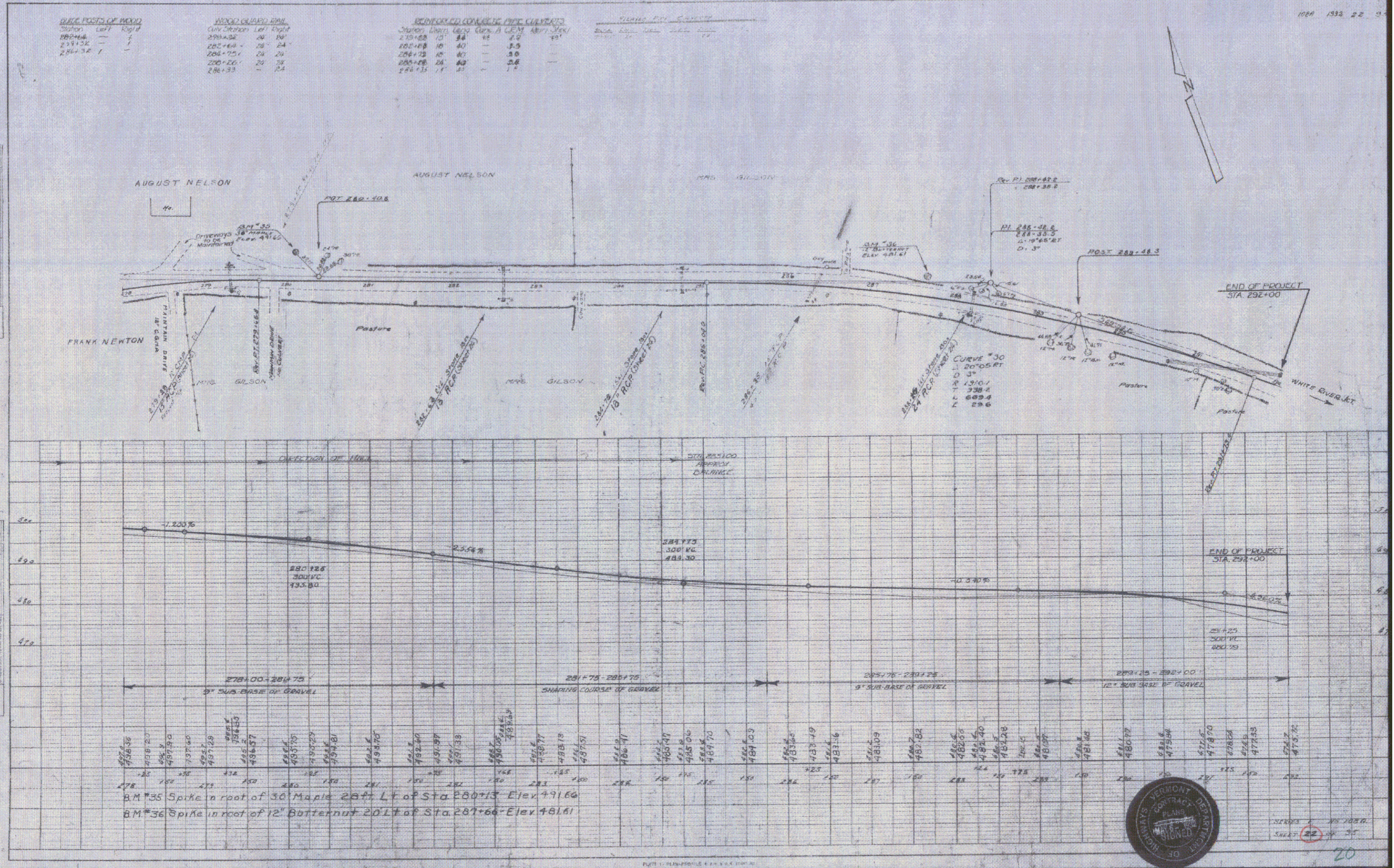
Station	Length	Curve	Left	Right
279+00	10'	40'	2.0	
282+46	10'	40'	2.0	
284+72	10'	40'	2.0	
286+20	10'	40'	2.0	
286+33	1'	41'	1.0	

**PIPING DATA**

Station	Material	Size	Depth
279+00	4" RCP	48"	2.0'
282+46	4" RCP	48"	2.0'
284+72	4" RCP	48"	2.0'
286+20	4" RCP	48"	2.0'
286+33	4" RCP	48"	2.0'

PLAN  
 REVISIONS  
 DATE  
 BY  
 CHECKED BY  
 APPROVED BY

DATE  
 BY  
 CHECKED BY  
 APPROVED BY



BM #35 Spike in root of 30' Maple 20' LT of Sta 280+13 Elev 491.60  
 BM #36 Spike in root of 12" Butternut 20' LT of Sta 287+66 Elev 481.61



SCALE: 1" = 40' HORIZ. 1" = 10' VERT.  
 SHEET 22 OF 35  
 20