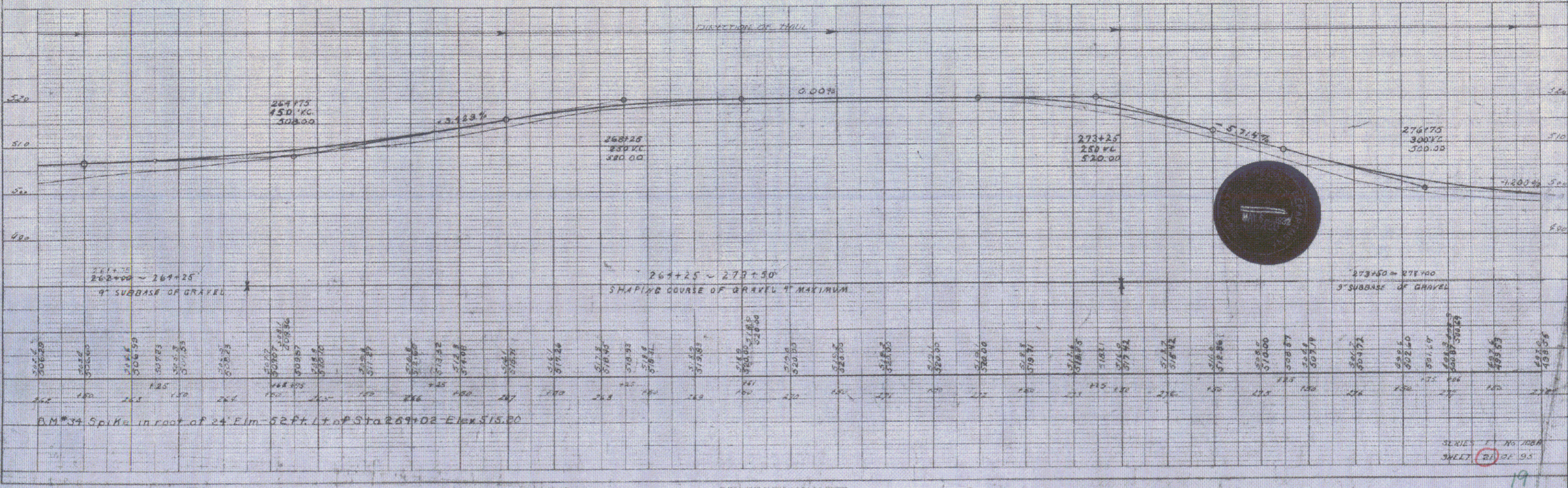
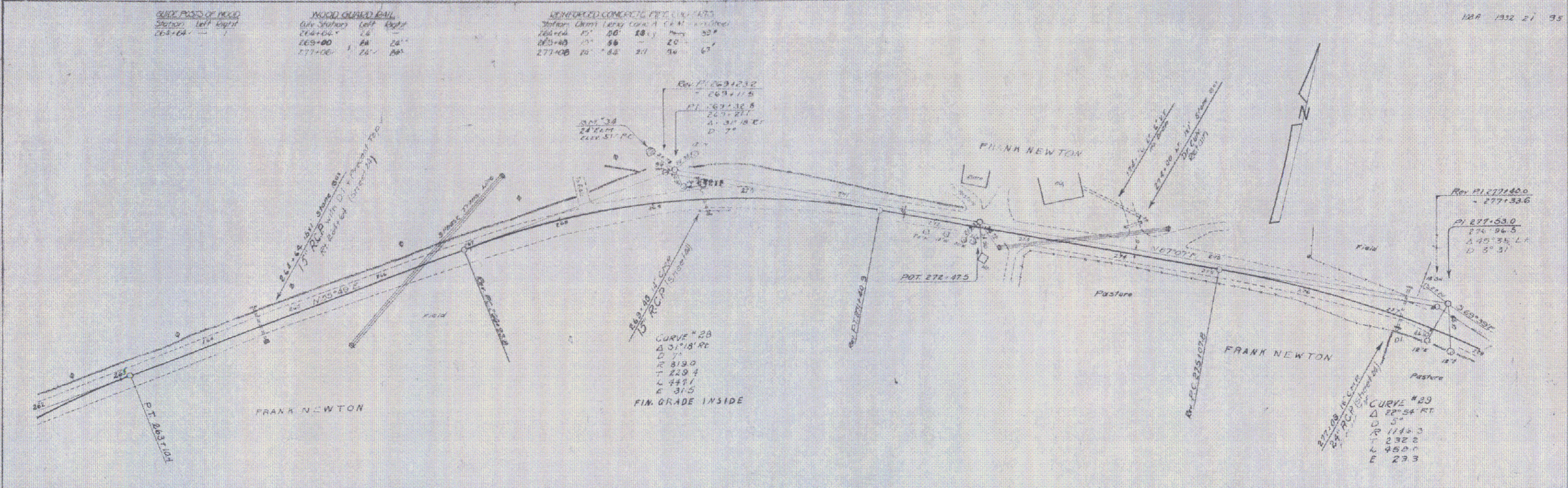


QUICK POSSES OF ROAD
 Station left right
 264+00 - - -
 269+00 24 24
 277+00 26 26

MICRO GRADED RAIL
 City Station left right
 264+00 24 24
 269+00 24 24
 277+00 26 26

REINFORCED CONCRETE PILES
 Station from left
 264+00 24 24
 269+00 24 24
 277+00 26 26

PLAN
 SHEET NO. 21
 DATE 10/15/52
 DRAWN BY J. H. HARRIS
 CHECKED BY W. H. HARRIS



PROFILE
 SHEET NO. 21
 DATE 10/15/52
 DRAWN BY J. H. HARRIS
 CHECKED BY W. H. HARRIS

BM #39 Spike in root of 24 Elm 52 Ft. L. of Sta 269+02 Elev 515.20