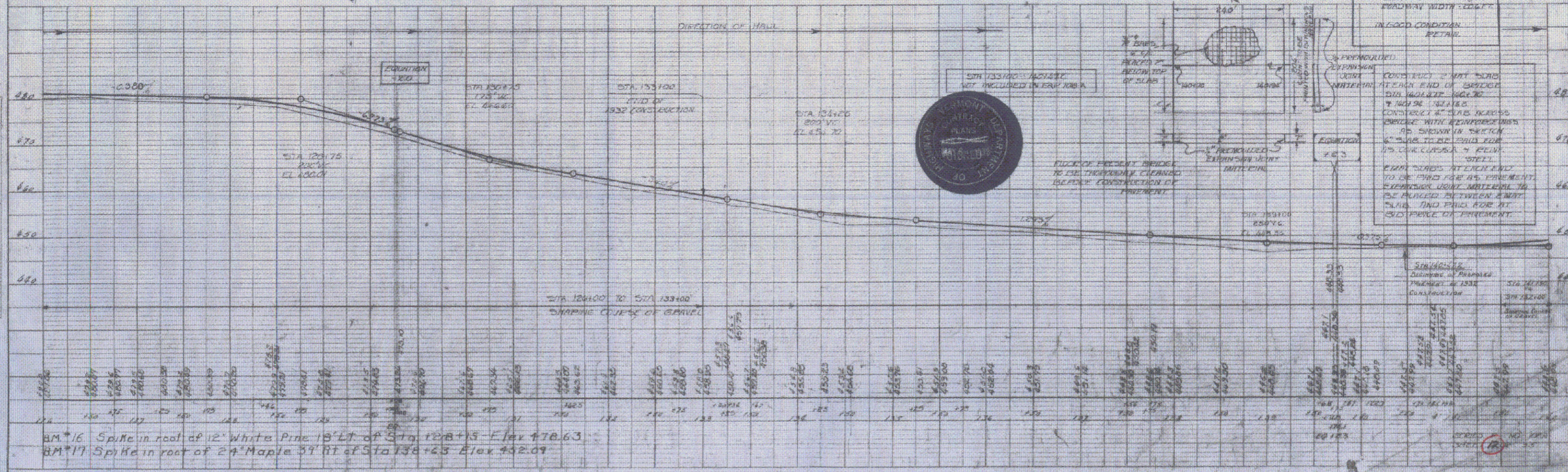
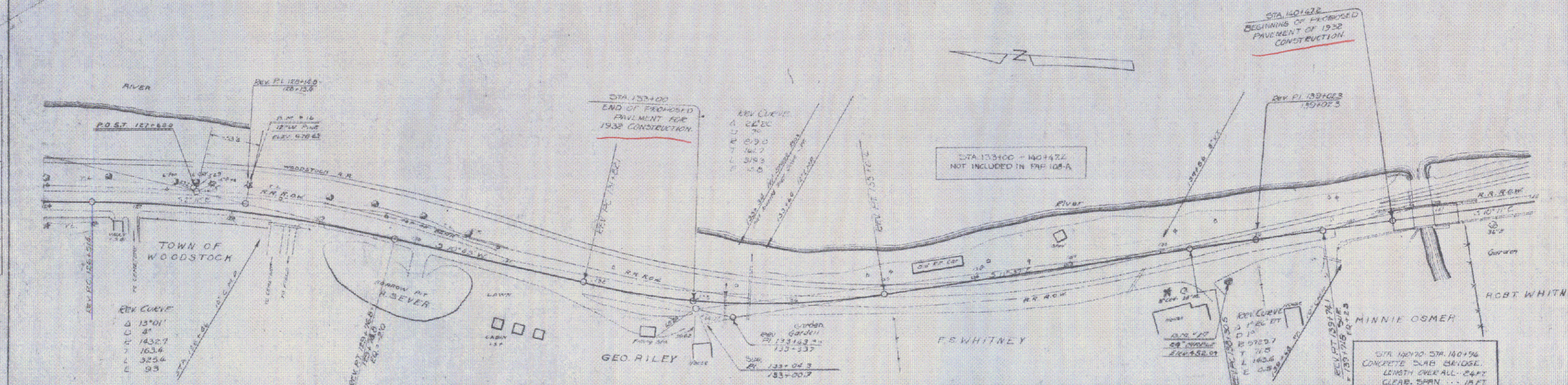


GRADE CHANGED RAIL

Station to Station	Length	Constant	By Level
10130-10270	140'	0.0	100'
10270-10410	140'	0.0	100'
10410-10550	140'	0.0	100'
10550-10690	140'	0.0	100'
10690-10830	140'	0.0	100'
10830-10970	140'	0.0	100'
10970-11110	140'	0.0	100'
11110-11250	140'	0.0	100'

100A 1948 12 35



BM*16 Spike in roof of 12' White Pine 18' Lt of Sta 12815 Elev 476.63
 BM*17 Spike in roof of 24' Maple 57' Rt of Sta 13045 Elev 452.09