

**WOOD GUIDE POSTS REQUIRED**

Station	Length	Notes
10+82	1	
16+90	1	

**NEW TRUNK CONC. PIPE CONCRETS REQUIRED**

Sta.	Dia.	Length	Comp. R.	Spec.	Notes
10+82	15"	18.71	28%	254'	
14+30	15"	40.71	—	—	14' of
16+90	30"	48.9	18.7	29'	—

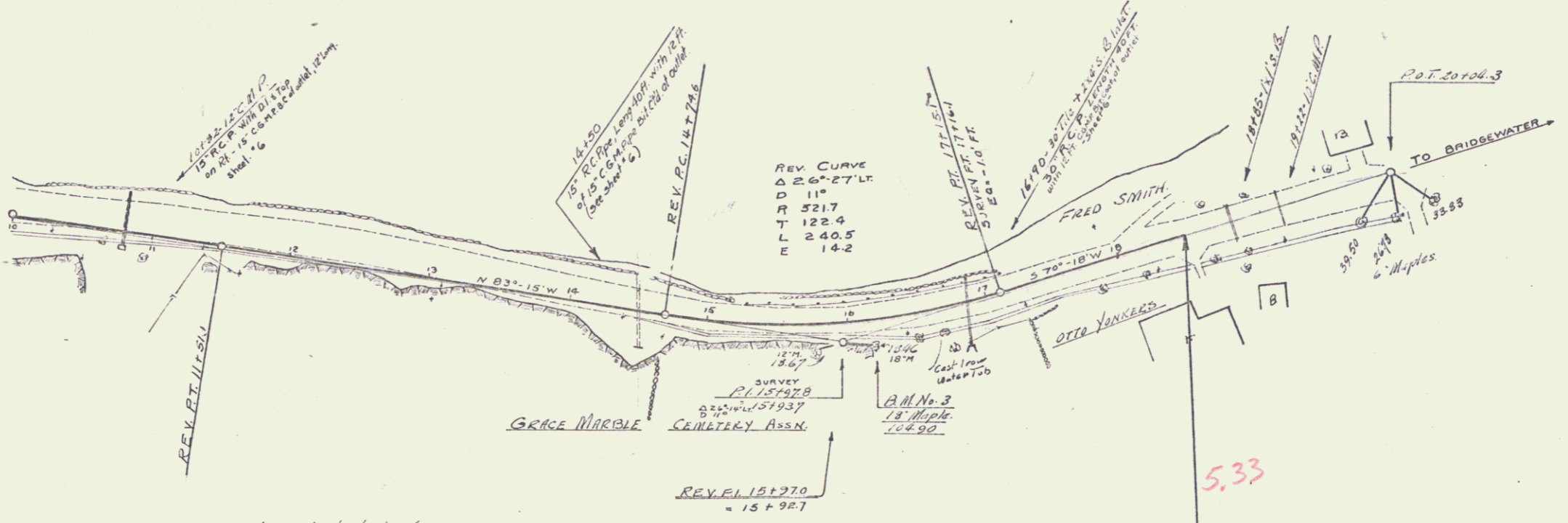
**NEW G.G.M. PIPES BY CIV. DIVISION**

Sta.	Dia.	Length	Notes
10+82	15"	18.71	
14+30	15"	40.71	
16+90	30"	12'	

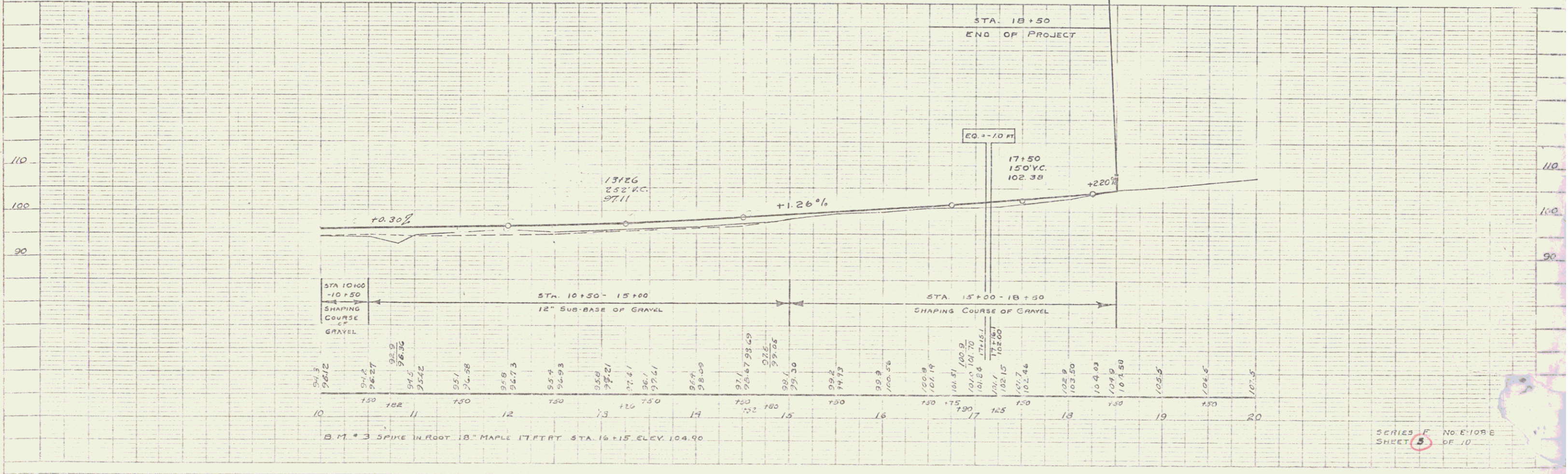
DATE: 11/15/32  
 DRAWN BY: S. J. ...  
 CHECKED BY: ...

**RAIL GUARD RAIL REQUIRED**  
 Stations: 10100-11000 100' to 160'  
 14120-15100 384' to 424'

PLAN  
 DATE: 11/15/32  
 DRAWN BY: S. J. ...  
 CHECKED BY: ...



The culvert at Sta. 14+50 was added at the request of Mr. O.A. Harding Nov. 15, 1932.



SERIES F No. E-108B  
 SHEET 5 OF 10