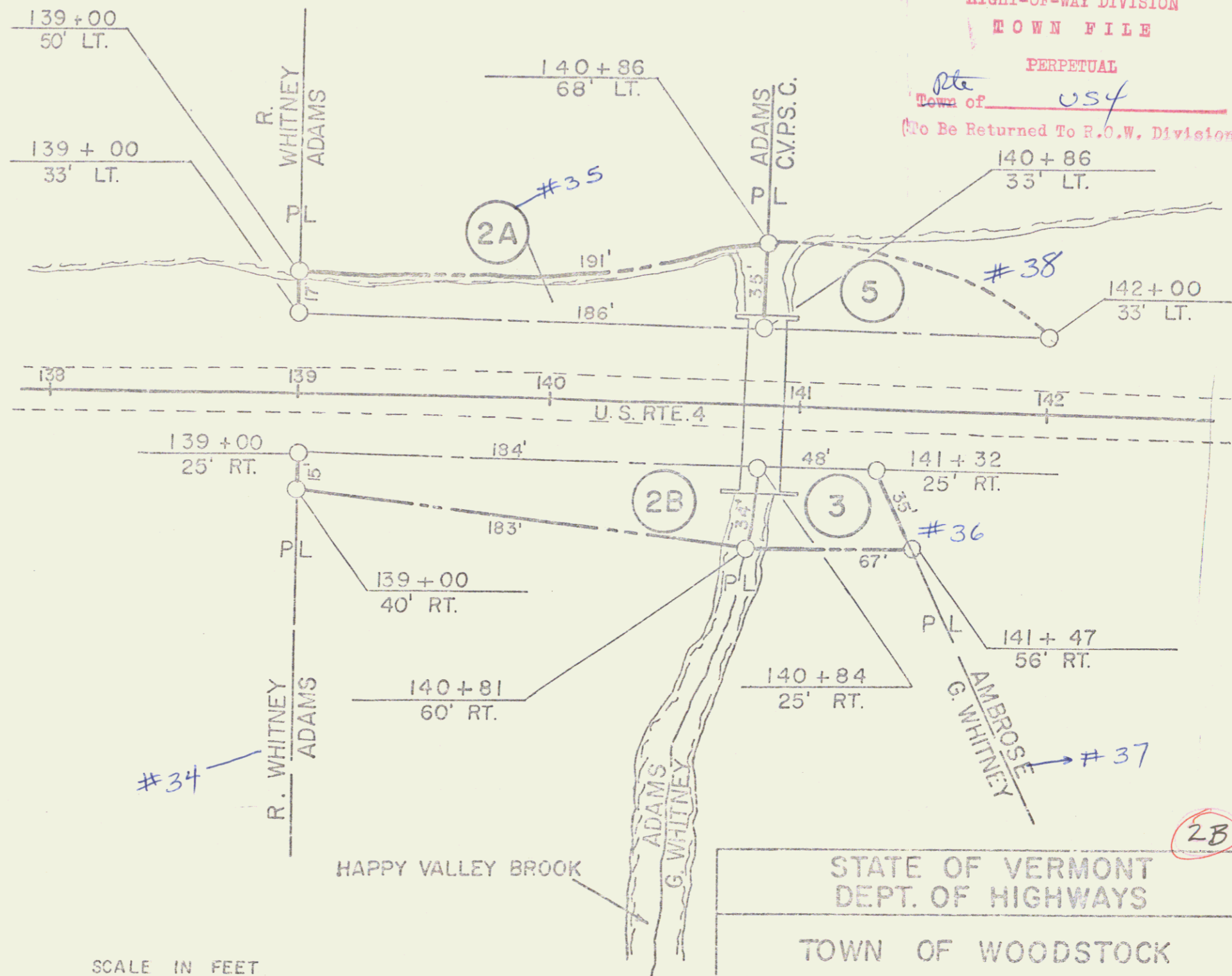


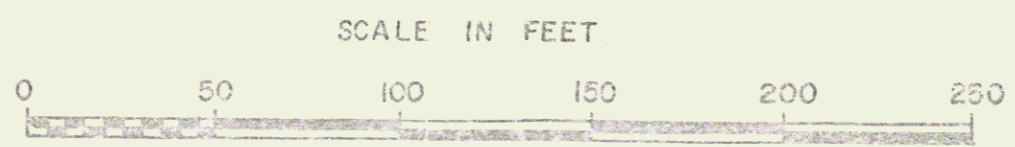
DONNA LEE ADAMS
 PARCEL 2A 0.09 A±
 STA. 139+00 LT. — STA. 140+86 LT.
 PARCEL 2B 0.1 A±
 STA. 139+00 RT. STA. 140+84 RT.

GEORGE E. & MILDRED P. WHITNEY
 PARCEL 3 0.04 A±
 STA. 140+81 RT. — STA. 141+52 RT.
 #36

CENTRAL VERMONT PUBLIC SERVICE CORP.
 PARCEL 5 #38
 CHANNEL (T)
 STA. 140+86 LT. — STA. 141+25 LT.
 INSTALL & MAINTAIN CULVERT (LARGE) (P)
 STA. 140+86 LT. STA. 141+00 LT.
 EASEMENT TO CONSTRUCT DETOUR (T)
 STA. 140+86 LT. — STA. 142+00 LT. 0.07A±



RIGHT-OF-WAY DIVISION
 TOWN FILE
 PERPETUAL
 Town of US4
 (To Be Returned To R.O.W. Division)



STATE OF VERMONT
 DEPT. OF HIGHWAYS
 TOWN OF WOODSTOCK
 Br # 56
 PROJECT WOODSTOCK BMA 6224
 APPROX. SCALE 1"=50' DATE 3/28/74 DRAWN BY KMD

was BPO20-2-6642