

INDEX OF SHEETS		
SHEET NO.	TITLE PAGE	
1	TITLE PAGE	
2	TYPICAL CROSS-SECTION OF IMPROVEMENT	
3	PLAN AND PROFILE STA. 0+00 TO STA. 15+00 OF FAP 10	SECTION B-1
4	1+00 - 6+00	SECTIONS R-1, R-2, R-3, R-4, B-4
5	6+00 - 19+00	
6	19+00 - 32+00	
7	32+00 - 45+00	
8	0+00 - 10+90	SECTIONS R-5, B-6
9	0+00 - 7+00	SECTIONS R-6, R-7, B-8
10	0+00 - 4+00	SECTIONS R-8, R-9, B-10
11	0+00 - 12+00	
12	12+00 - 24+00	SECTIONS R-10, R-11
13	24+00 - 31+00	
14	24+00 - 258+00 OF FAP 28	SECTION B-12
15	PLAN OF ABUTMENTS - BRIDGES 1 & 6	SECTIONS B-1, B-6
16	AND REPAIRS - BRIDGE 4	SECTION B-4
17	SUPERSTRUCTURE - BRIDGE 4	
18	PLAN OF ABUTMENT AND REPAIRS - BRIDGE 9	SECTIONS B-8
19	MASONRY PLAN	
20	SUPERSTRUCTURE - BRIDGES 8 & 12	
21	REINFORCING FOOTING - BRIDGE 10	SECTION B-10
22	PLAN OF ABUTMENT - BRIDGE 12	SECTION B-12
23	STANDARD BRIDGE SHEET S.D. 2	SECTIONS B-1, B-4, B-8, B-10
24	S.A.P. 16	SECTIONS B-8
25	S.A.P. No. 54	SECTION B-12
26	STRUCTURE	S. 17
27		S. 19
28-34	CROSS SECTION SHEETS	SECTIONS R-1, R-2, R-3, R-4, B-4
35-37		R-5, B-6
38-40		R-6, R-7, B-8
41-43		R-8, R-9, B-10
44-48		R-10, R-11

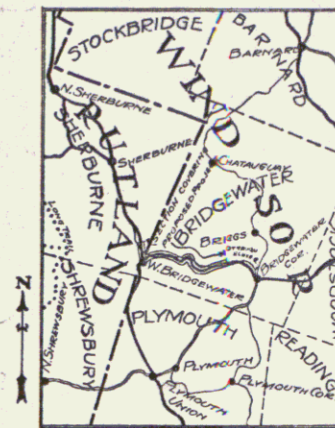
STATE OF VERMONT
STATE HIGHWAY DEPARTMENT

PLAN AND PROFILE OF PROPOSED
STATE HIGHWAY
FLOOD RELIEF PROJECT

TOWNS OF SHERBURNE - BRIDGEWATER
BRIDGEWATER - RUTLAND ROAD

Pin # 99R181

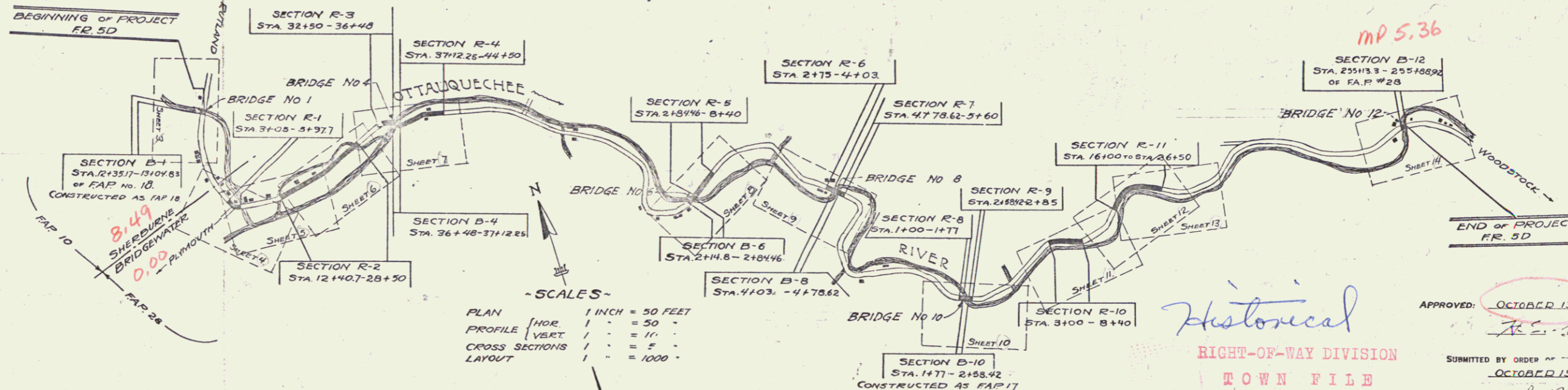
FED. ROAD DIST. NO.	STATE	FED. AID PROJ. NO.	FISCAL YEAR	SHEET NO.	TOTAL SHEETS
9	Vt.	FRSD	1926	1	48



-SCALE-
1 INCH = 4 MILES

FROM THE FIRST STEEL BRIDGE WEST OF THE SHERBURNE-BRIDGEWATER TOWN LINE EASTERLY TO THE FIRST STEEL BRIDGE WEST OF BRIDGEWATER CORNERS.

LENGTH OF PROJECT INCLUDING BRIDGES OVER 20 FT. SPAN = 5932.48 FT. = 11.23 MILES
LENGTH OF PROJECT EXCLUDING BRIDGES OVER 20 FT. SPAN = 5496.25 FT. = 10.40 MILES



-SCALES-
PLAN 1 INCH = 50 FEET
PROFILE HOR. 1" = 50'
VERT. 1" = 10'
CROSS SECTIONS 1" = 5'
LAYOUT 1" = 1000'

CONVENTIONAL SIGNS

COUNTY LINE	GROUND ELEVATION	DATUM	LEVEL
TOWN LINE	GRADE ELEVATION	DATUM	FOOT
FENCE LINE			
STONE WALL			
UNFENCED PROPERTY			
GUARD RAIL			
TRAVELED WAY			
RAILROAD			
RETAINING WALL			
CENTER LINE			
SURVEY LINE			
CULVERT			
DROP INLET			
TROLLEY POLE			
POWER POLE			
TELEPHONE POLE			
TREES			
HEDGE			

CURVE DATA

DEFLECTION ANGLE Δ
DEGREE OF CURVE D
RADIUS OF CURVE R
TANGENT DISTANCE T
LENGTH OF CURVE L
EXTERNAL DISTANCE E
POINT OF INTERSECTION P. I.
POINT OF CURVE P. C.
POINT OF TANGENT P. T.
POINT ON TANGENT P. O. T.

THE NUMBERS OF THE BRIDGES AS CONSTRUCTED AS PARTS OF FAP 10, 17, 18, & 28 ARE DESIGNATED AS B-1, B-4, ETC. OF PROJECT FR 3D, THE NUMBERS BEING THE SAME AS THE RESPECTIVE NUMBERS OF THE BRIDGES ON THE OLD PROJECTS

SOME CONSTRUCTION WORK HAS BEEN DONE ON THIS PROJECT SINCE THE SURVEY WAS MADE; THEREFORE THE EARTHWORK & BRIDGE QUANTITIES GIVEN ARE ONLY APPROXIMATE.

THIS PROJECT TO BE CONSTRUCTED IN ACCORDANCE WITH STANDARD SPECIFICATIONS ON FILE WITH THE U.S. BUREAU OF PUBLIC ROADS AS APPROVED JULY 7, 1926.

THESE PLANS SUBJECT TO SUCH REVISIONS AS MAY BE REQUIRED BY THE BUREAU OF PUBLIC ROADS OR THE CHIEF ENGINEER.

APPROVED: OCTOBER 13, 1926
[Signature]
CHIEF ENGINEER
SUBMITTED BY ORDER OF THE STATE HIGHWAY BOARD
OCTOBER 13, 1926
[Signature]
COMMISSIONER OF HIGHWAYS

Historical
RIGHT-OF-WAY DIVISION
TOWN FILE
PERPETUAL
Town of VS4
(To Be Returned To R.O.W. Division)

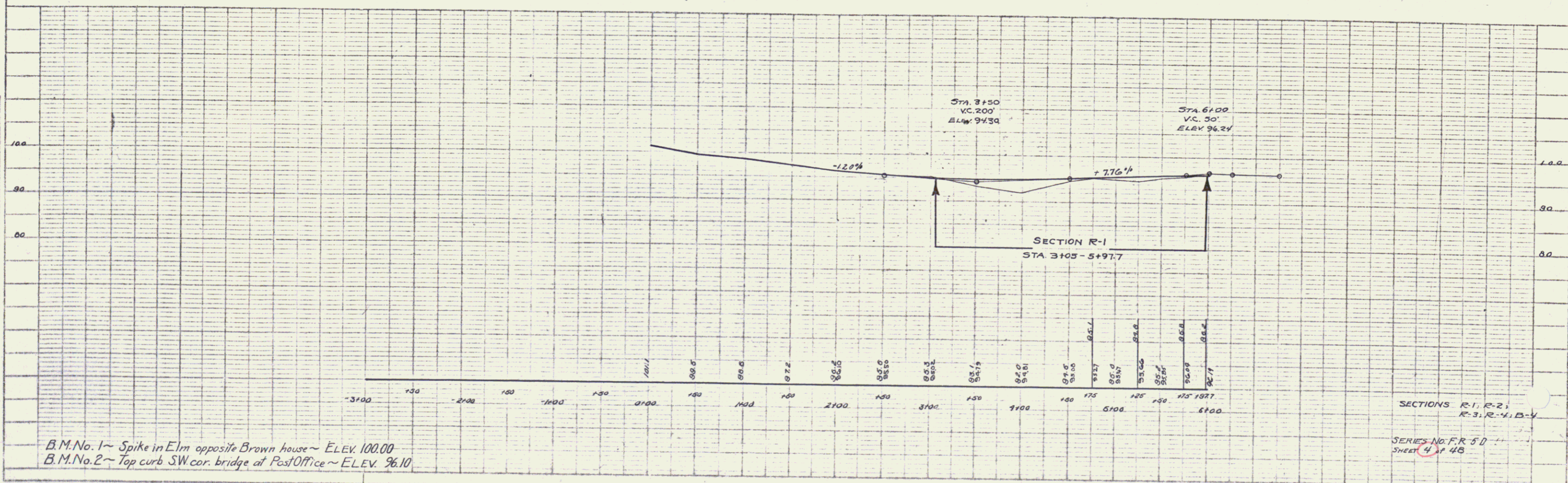
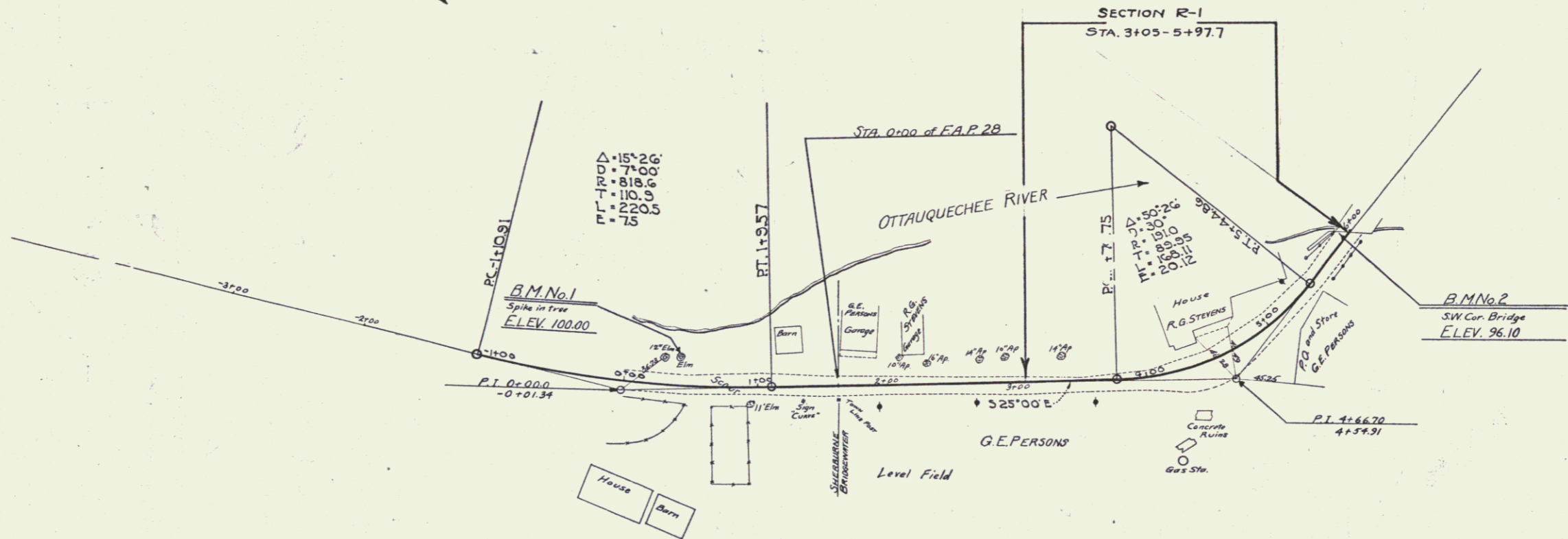
RECOMMENDED
DISTRICT ENGINEER
BUREAU OF PUBLIC ROADS
RECOMMENDED FOR APPROVAL
[Signature]
CHIEF ENGINEER
BUREAU OF PUBLIC ROADS

APPROVED
DIRECTOR - BUREAU OF PUBLIC ROADS
project No. FR 5D
SERIES F.R. No. 5D FILED
SHEET 1 OF 48

Sherburne
Bridge Water
5D

PLAN
 NOTE BOOK
 DATE
 DRAWN
 CHECKED

PROFILE
 NOTE BOOK
 DATE
 DRAWN
 CHECKED



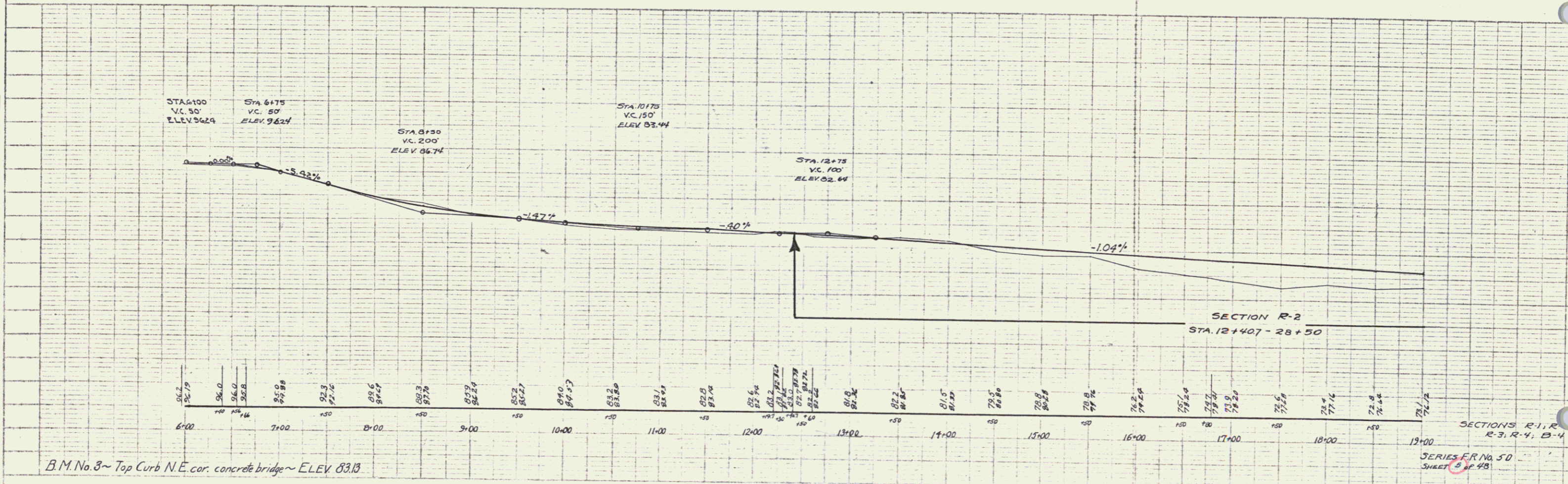
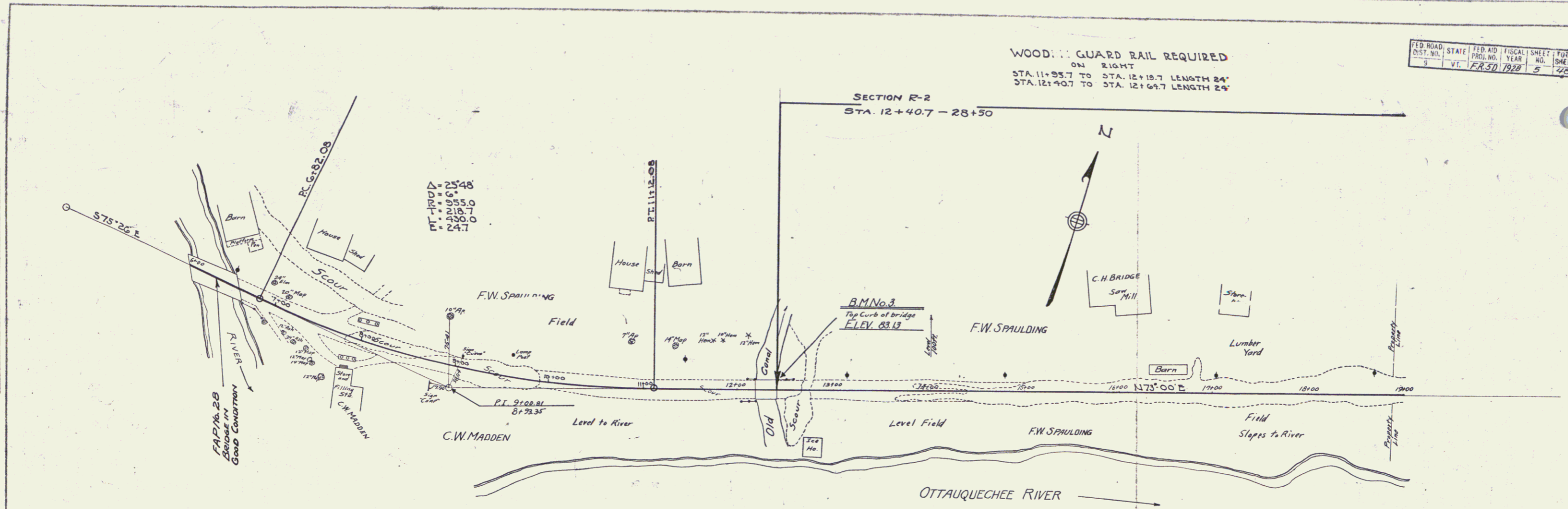
B.M. No. 1 ~ Spike in Elm opposite Brown house ~ ELEV. 100.00
 B.M. No. 2 ~ Top curb SW cor. bridge at Post Office ~ ELEV. 96.10

SECTIONS R-1, R-2,
 R-3, R-4, B-V
 SERIES NO. FR 50
 SHEET 4 of 48

FED. ROAD DIST. NO.	STATE	FISCAL YEAR	SHEET NO.	TOTAL SHEETS
9	Vt.	1928	5	48

WOOD: GUARD RAIL REQUIRED
 ON RIGHT
 STA. 11+95.7 TO STA. 12+19.7 LENGTH 24'
 STA. 12+40.7 TO STA. 12+64.7 LENGTH 24'

SECTION R-2
 STA. 12+40.7 - 28+50



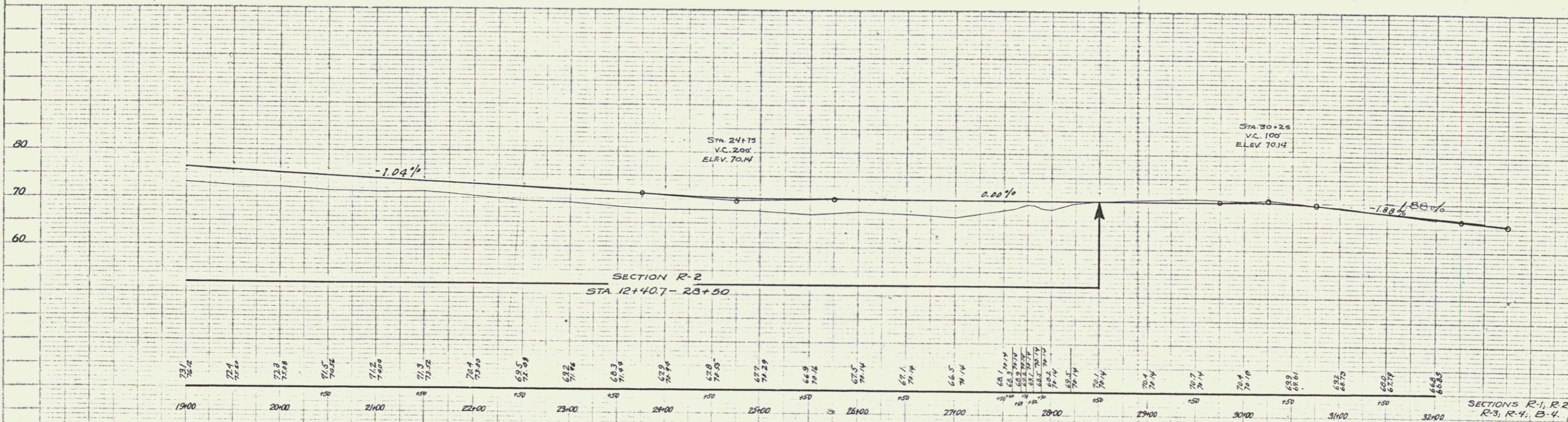
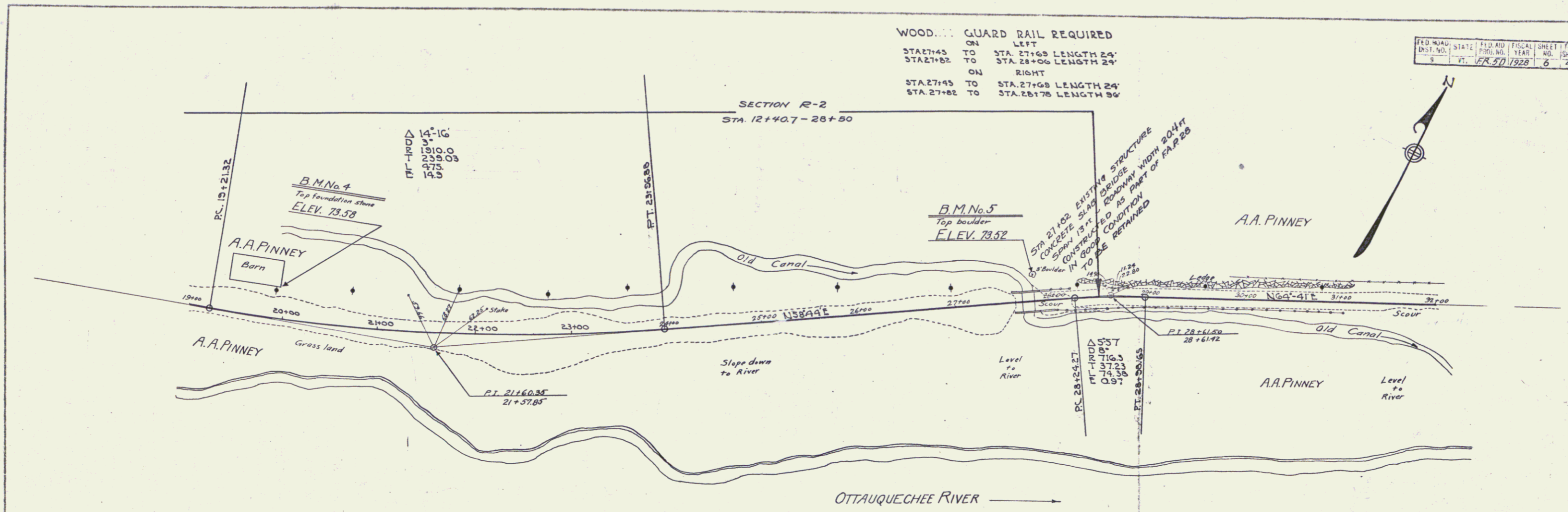
B.M. No. 8 - Top Curb N.E. cor. concrete bridge - ELEV 83.13

SECTIONS R-1, R-2, R-3, R-4, B-1, B-2, B-3, B-4
 SERIES R No. 50
 SHEET 5 OF 48

PLAN
 DATE: 1928
 DRAWN BY: J. S. [unclear]
 CHECKED BY: [unclear]

PROFILE
 DATE: 1928
 DRAWN BY: J. S. [unclear]
 CHECKED BY: [unclear]

WOOD... GUARD RAIL REQUIRED
 ON LEFT
 STA 27+45 TO STA. 27+68 LENGTH 24'
 STA 27+82 TO STA. 28+06 LENGTH 24'
 ON RIGHT
 STA 27+45 TO STA. 27+68 LENGTH 24'
 STA 27+82 TO STA. 28+178 LENGTH 36'



B.M. No. 4 ~ Top foundation stone S.E. cor. old barn ~ ELEV. 73.53
 B.M. No. 5 ~ Top 3 ft. boulder in side hill North of concrete bridge ~ ELEV. 73.52

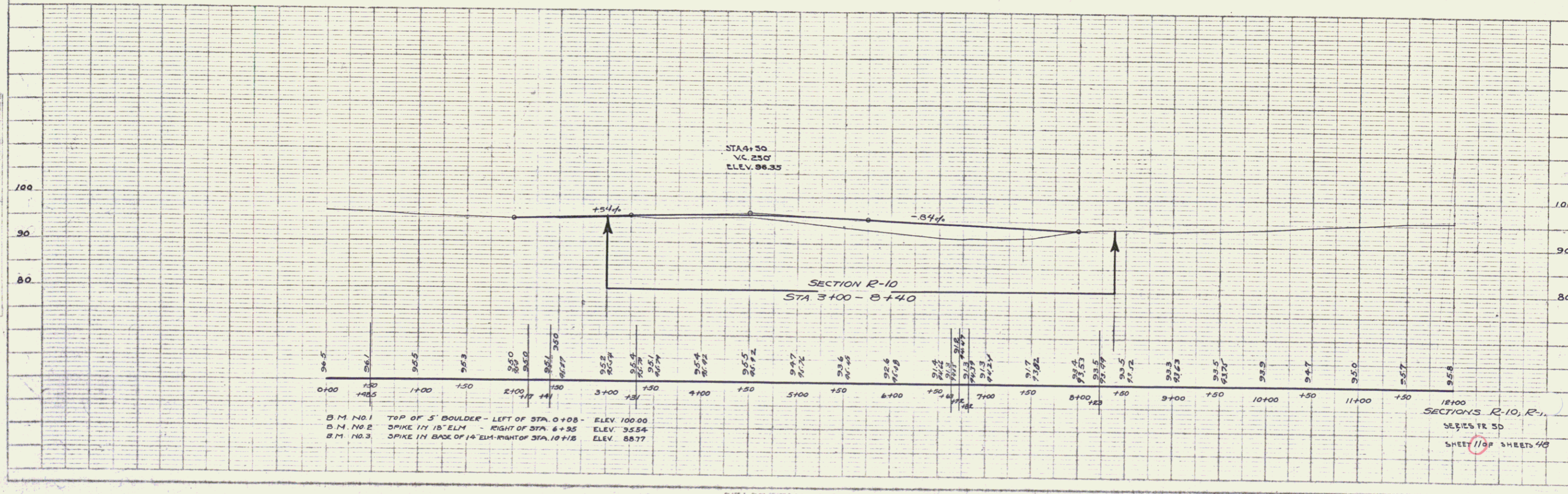
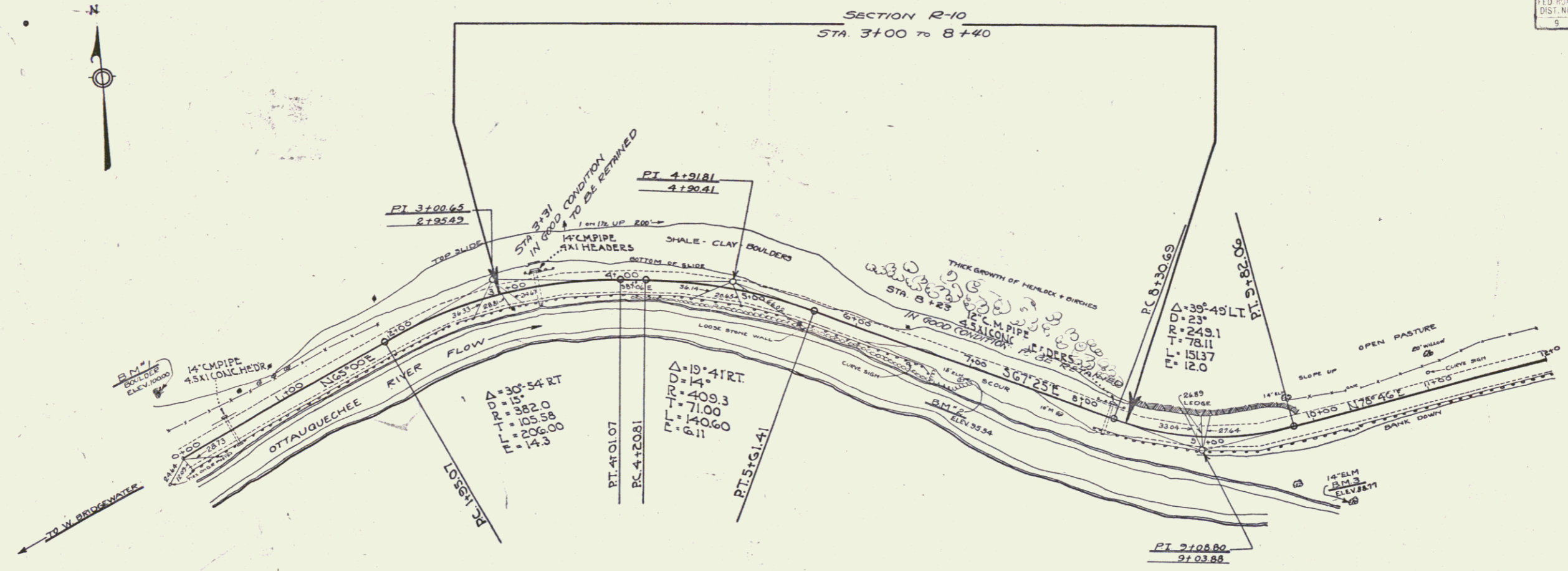
SECTIONS R-1, R-2, R-3, R-4, B-4
 SERIES NO. FR 50
 SHEET 6 OF 48

PLAN
 DATE: May 1928
 DRAWN BY: C.S. BROWN

PROFILE
 DATE: May 1928
 DRAWN BY: C.S. BROWN

PLAN
 PUTNAM
 STATEMENT
 NOTE: ROAD TO BE CONSTRUCTED
 IS TO BE 12' WIDE
 WITH 2' SHOULDER

PROFILE
 PUTNAM
 STATEMENT
 NOTE: B.M. NO. 1, 2, 3
 ARE TO BE USED
 AS CHECK POINTS



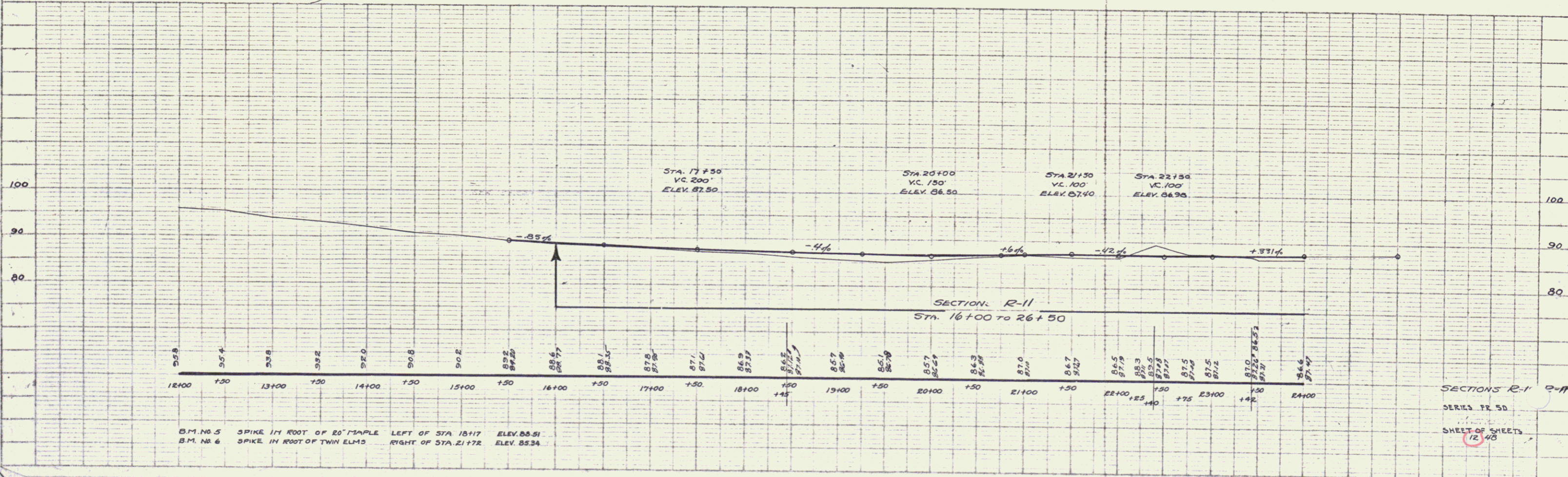
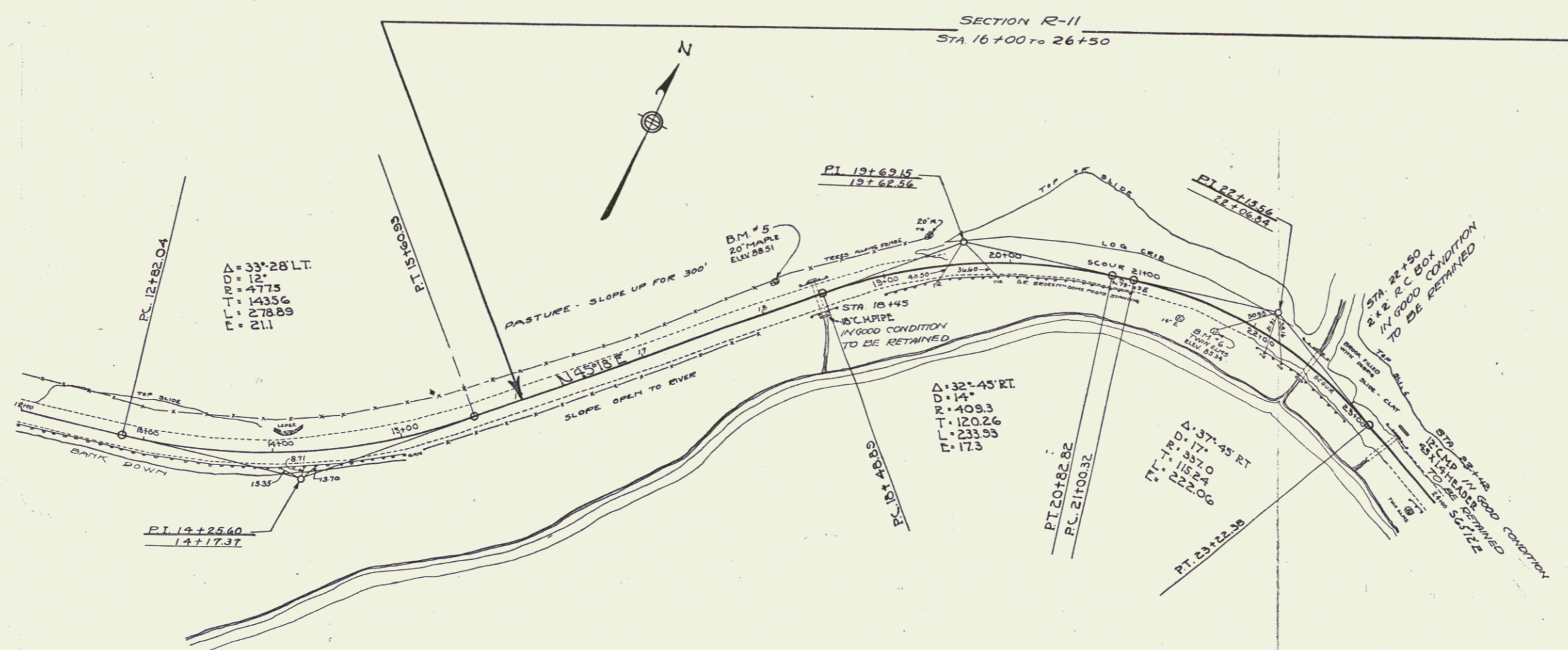
B.M. NO. 1 TOP OF 5' BOULDER - LEFT OF STA. 0+08 - ELEV. 100.00
 B.M. NO. 2 SPIKE IN 18" ELM - RIGHT OF STA. 4+35 - ELEV. 95.54
 B.M. NO. 3 SPIKE IN BASE OF 14" ELM - RIGHT OF STA. 10+16 - ELEV. 88.77

12+00
 SECTION R-10, R-11
 SERIES FR. 5D
 SHEET 11 OF SHEETS 48

SECTION R-11
 STA 16+00 TO 26+50

PLAN
 DATE: 10/1/73
 DRAWN BY: [Name]
 CHECKED BY: [Name]
 PROJECT: [Name]

PROFILE
 DATE: 10/1/73
 DRAWN BY: [Name]
 CHECKED BY: [Name]
 PROJECT: [Name]



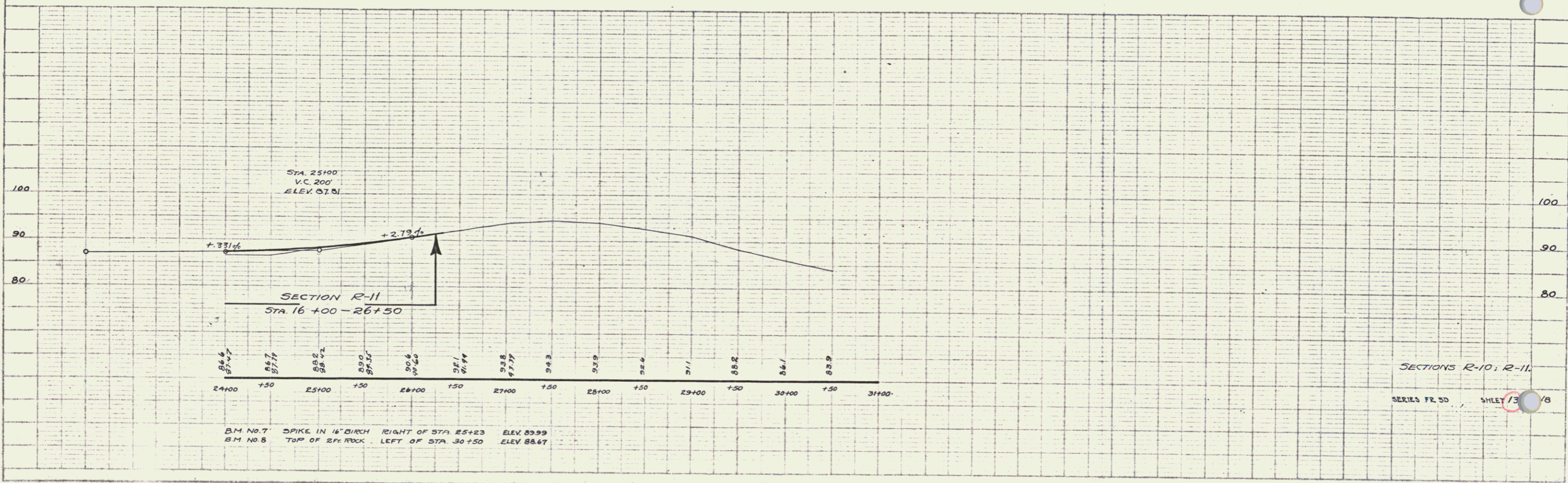
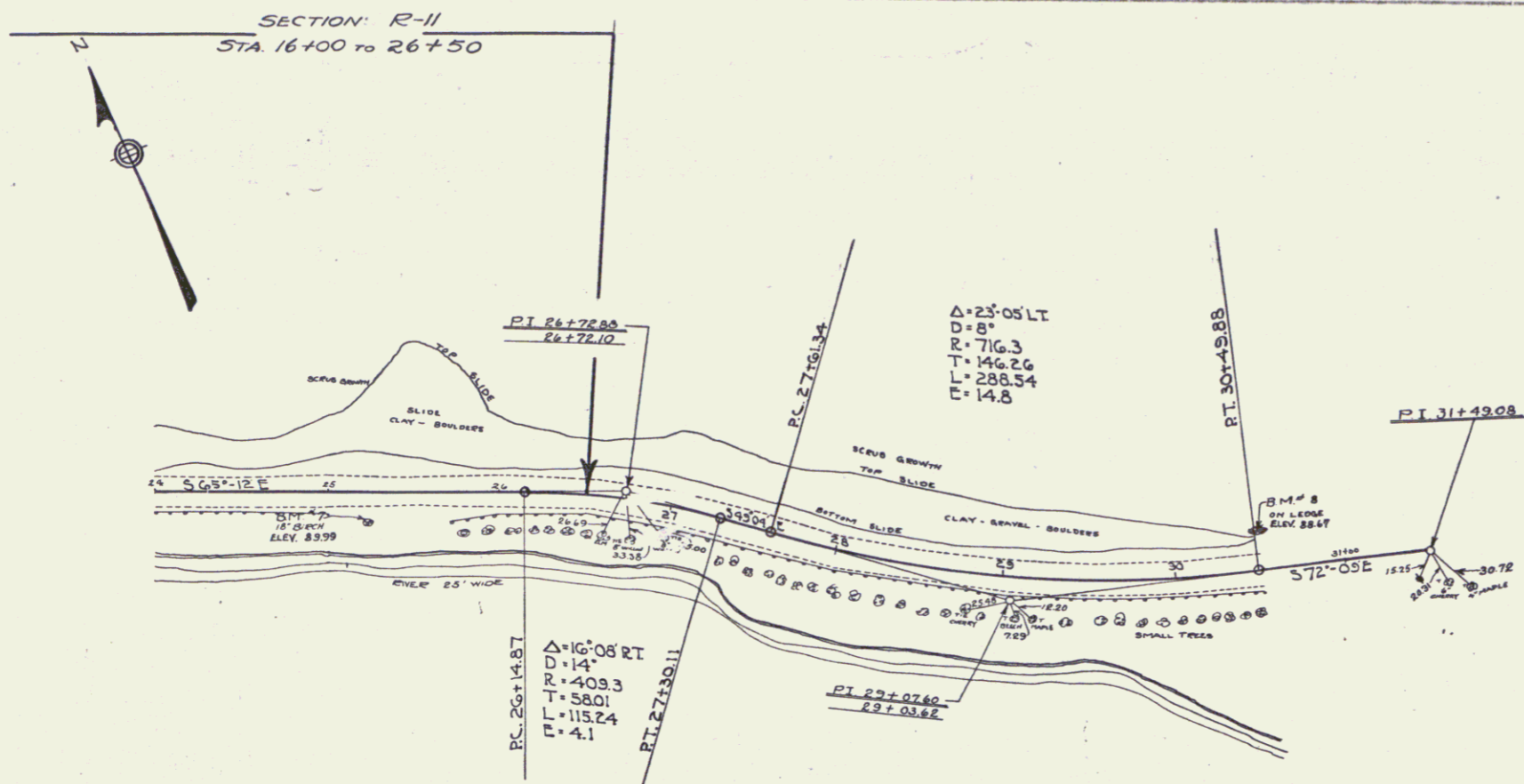
B.M. NO. 5 SPIKE IN ROOT OF 20' MAPLE LEFT OF STA 18+17 ELEV. 88.81
 B.M. NO. 6 SPIKE IN ROOT OF TWIN ELMS RIGHT OF STA 21+72 ELEV. 85.34

SECTIONS R-1 R-11
 SERIES PR 50
 SHEET OF SHEETS
 12/48

NEW YORK STATE DEPARTMENT OF TRANSPORTATION
 DIST. NO. 1000
 DIVISION OF HIGHWAYS
 PROJECT NO. 1000
 SHEET NO. 13 OF 48

PLAN
 SECTION R-11
 STA. 16+00 TO 26+50

PROFILE
 SECTION R-11
 STA. 16+00 TO 26+50



B.M. NO. 7 SPIKE IN 14" BIRCH RIGHT OF STA 25+23 ELEV 89.99
 B.M. NO. 8 TOP OF 24" ROCK LEFT OF STA 30+50 ELEV 88.67

SECTIONS R-10, R-11
 SERIES FR 50 SHEET 13 OF 48