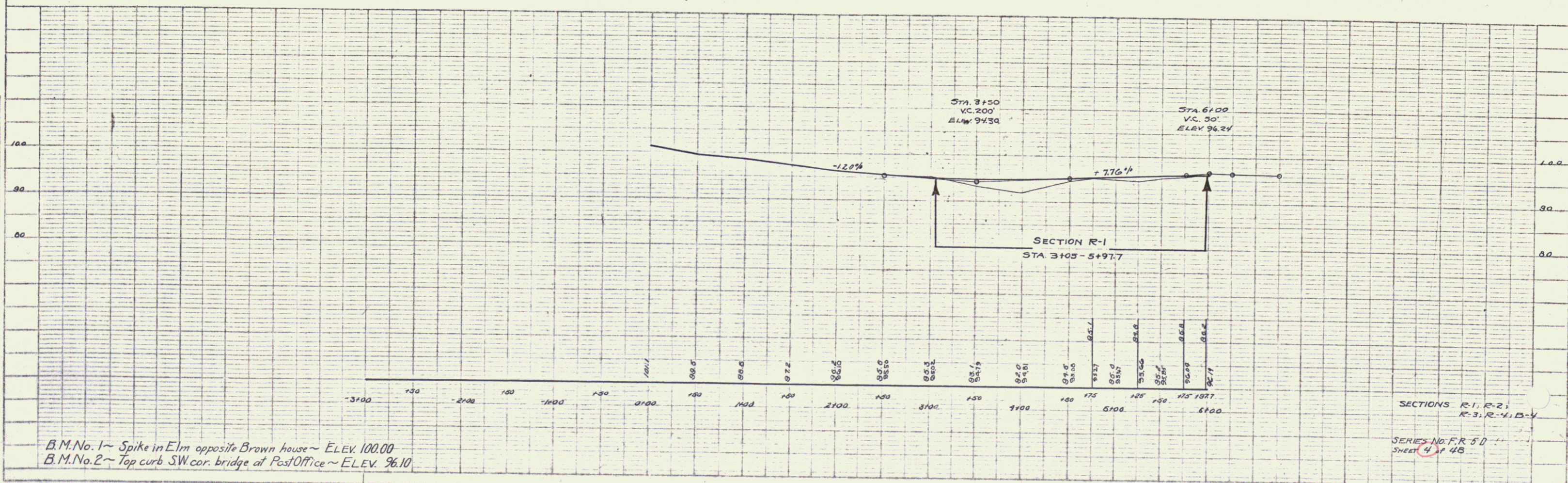
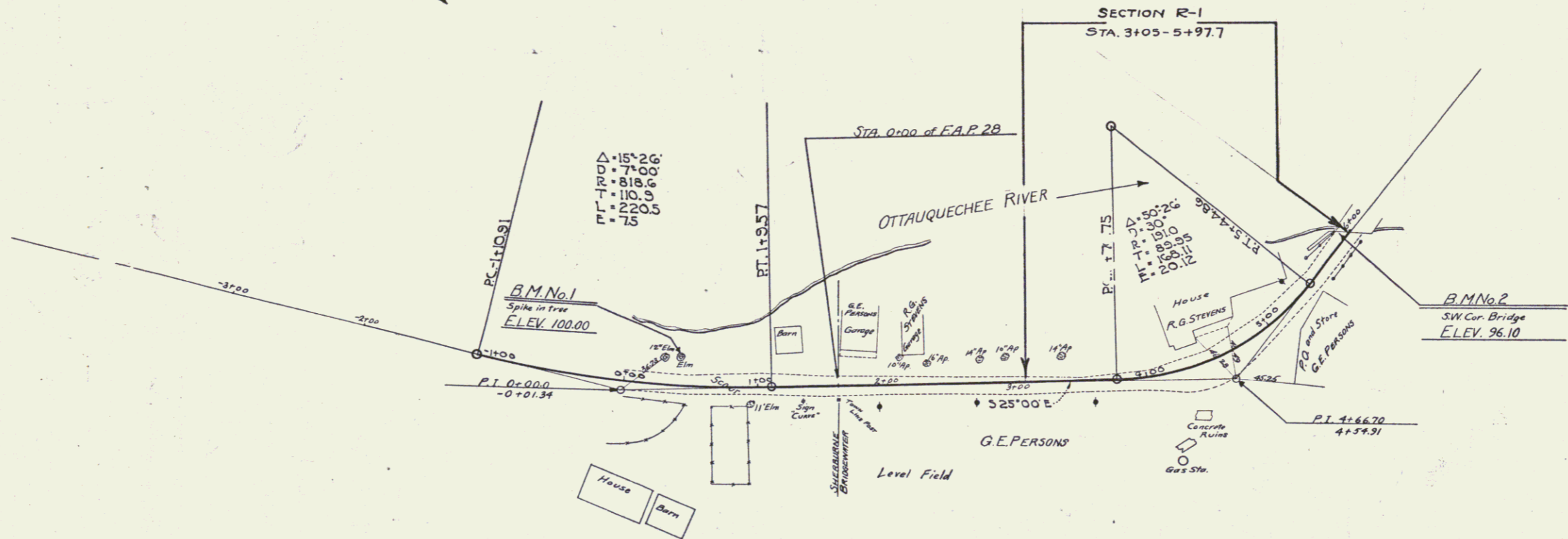


PLAN
 NOTE BOOK
 DATE
 DRAWN
 CHECKED

PROFILE
 NOTE BOOK
 DATE
 DRAWN
 CHECKED



B.M. No. 1 ~ Spike in Elm opposite Brown house ~ ELEV. 100.00
 B.M. No. 2 ~ Top curb SW cor. bridge at Post Office ~ ELEV. 96.10

SECTIONS R-1, R-2,
 R-3, R-4, B-V
 SERIES NO. FR 50
 SHEET 4 of 48