

EXCAVATION & REMOVAL OF ROAD SURFACE ON ROADWAYS, Item 118-A
206+75' - 295+75' Lt.
2/27/50 - 2/27/50

CONSTRUCT BARRICADE
Item 541-A
294+75 Lt.

THREE CABLE GUARD RAIL WITH STEEL POSTS, ITEM 543
282+00 285+00 Rt.
263+90 - 274+74 Rt

STONE FILL FOR SLOPE PROTECTION, ITEM 522
286+75' - 297+25 Rt.

#214 EDNA L. SEVERENCE
(A 2.4-1) STA. 286+12 - 310+94
COND. 1/30/59
BRIDGEWATER - BK 33 - PG. 393 - 12/4/59

UNCLASSIFIED CHANNEL EXCAVATION, Item 106-C
287+50 - 297+25 Rt.

REMOVAL & DISPOSAL OF PRESENT GUARD RAIL
Item 550
282+00' - 284+75 Lt.
292+55' - 298+00 Lt.

#20 C BENJAMIN & MYRTLE HOISINGTON
(A 0.62) STA. 281+99 - 284+282
NO 1/16/50
BRIDGEWATER - BK 33 - PG. 438 - 1/13/50

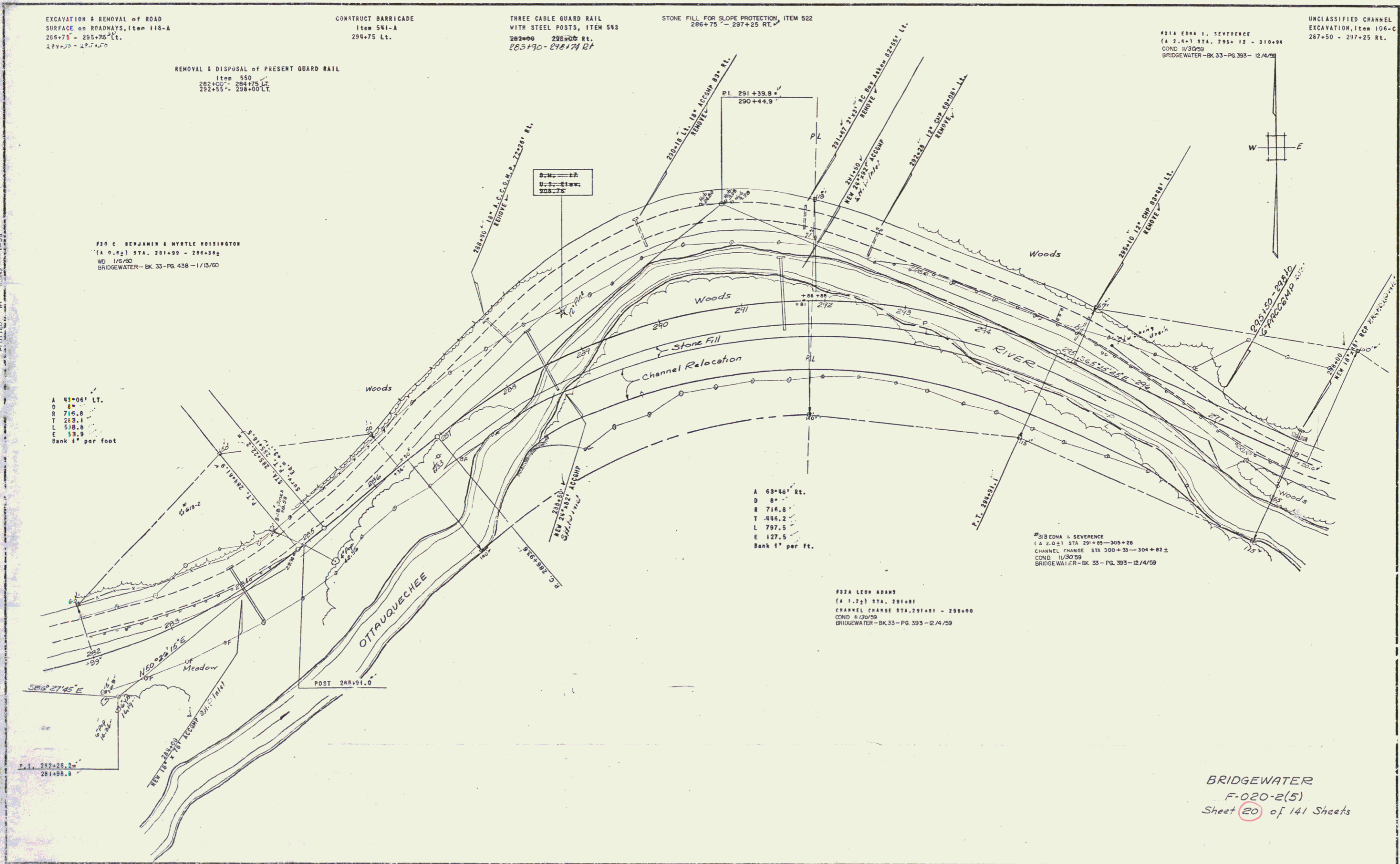
SURVEYED BY KALLO II-57
PLOTTED BY

A 43°06' Lt.
D 4'
R 716.8
T 283.1
L 518.8
E 13.9
Bank 1" per foot

A 63°46' Rt.
D 8'
R 716.8
T 446.2
L 797.5
E 127.5
Bank 1" per ft.

#224 LEOP ADAMS
(A 1.71) STA. 281+81
CHANNEL CHANGE STA. 291+81 - 288+00
COND. 1/30/59
BRIDGEWATER - BK 33 - PG. 393 - 12/4/59

#214 EDNA L. SEVERENCE
(A 2.0-1) STA. 291+85 - 305+28
CHANNEL CHANGE STA. 300+33 - 304+82 ±
COND. 1/30/59
BRIDGEWATER - BK 33 - PG. 393 - 12/4/59



BRIDGEWATER
F-020-2(5)
Sheet 20 of 141 Sheets