

CONSTRUCT BARRICADE
Item 541-A
256+00 Lt.

Turnout
250+10 - 251+40 Lt.

CONSTRUCT DRIVES
LT.
250+98.25
261+85
264+00
267+20.

THREE CABLE GUARD RAIL WITH
STEEL POSTS, ITEM 543
251+50 - 254+35 Lt.
253+90 - 254+75 Lt.
256+28 - 257+08 Lt. 263+83-263+55 Lt.
256+67 - 263+63 Lt.
262+68 - 263+55 Lt.
255+10 - 255+10 Lt.

CONSTRUCT SPECIAL DITCH
Item 101-A
252+65 - 255+50 Rt.
252+00 - 263+30 Lt.
263+38 - 264+38 Lt.

EXCAVATION and REMOVAL of ROAD
SURFACE on ROADWAYS
Item 118-A
250+00 - 253+00 Lt.
255+50 - 258+75 Lt.
262+00 - 266+00 Rt.
269+30

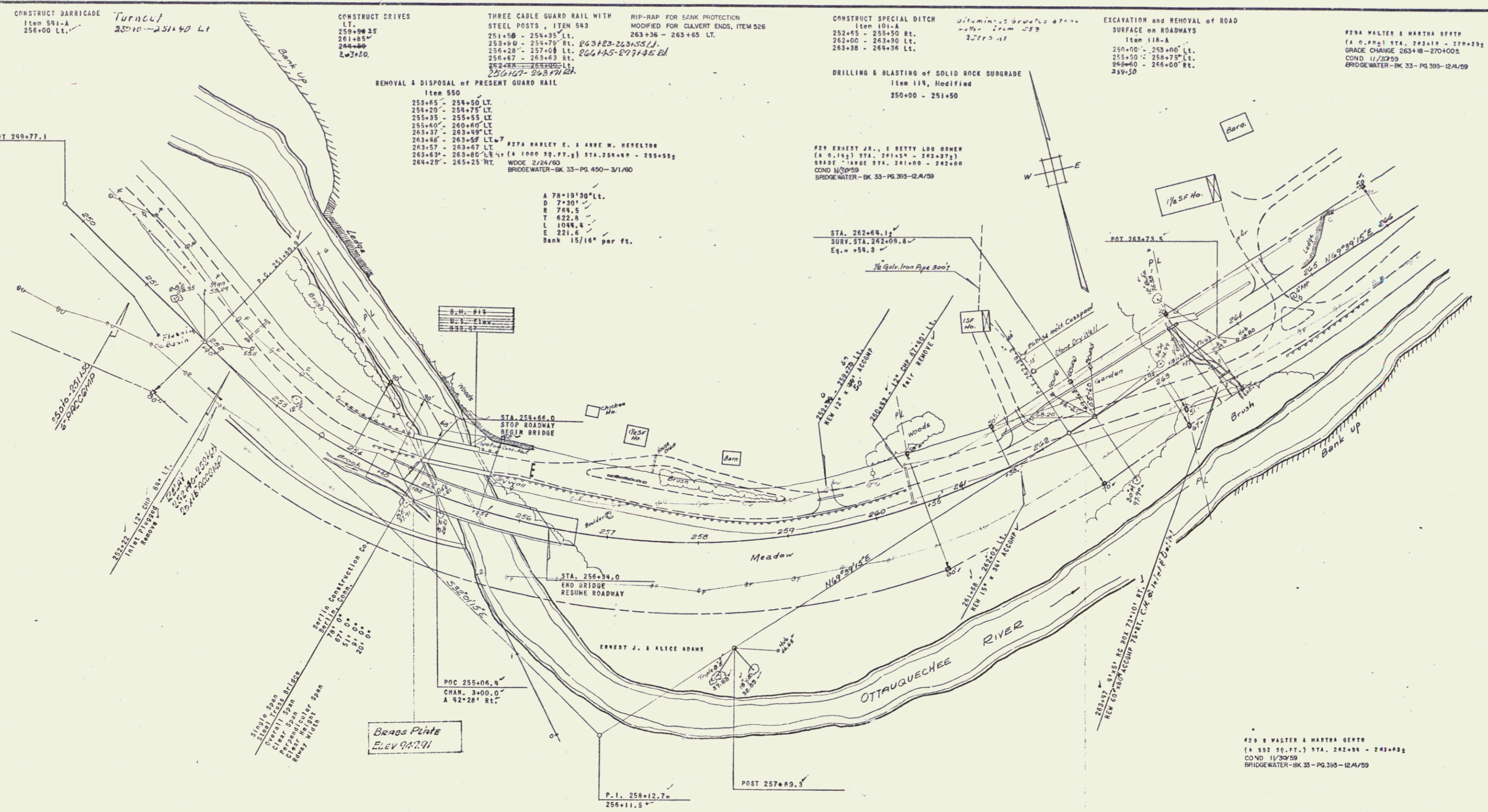
#294 WALTER & MARTHA GERTH
(A. 0. 1/2) STA. 263+18 - 270+25
GRADE CHANGE 263+18 - 270+25
COND 11/30/59
BRIDGEWATER-BK 33-PG 395-12A/59

REMOVAL & DISPOSAL of PRESENT GUARD RAIL
Item 550
253+65 - 254+50 Lt.
254+20 - 254+75 Lt.
255+35 - 255+55 Lt.
255+60 - 260+60 Lt.
263+37 - 263+49 Lt.
263+46 - 263+88 Lt.
263+57 - 263+67 Lt.
263+63 - 263+80 Lt.
264+25 - 265+25 Rt.

A 78+19'30" Lt.
D 7+30'
R 784.5
T 622.8
L 1044.8
E 221.6
Bank 15/16" per ft.

#28 ERNEST JR., & BETTY LOU OWNER
(A. 0. 1/2) STA. 261+54 - 263+27
GRADE CHANGE STA. 261+00 - 262+00
COND 11/30/59
BRIDGEWATER-BK 33-PG 395-12A/59

SURVEYED BY
MULLO
9-57



#29 WALTER & MARTHA GERTH
(A. 0. 1/2) STA. 262+18 - 263+25
COND 11/30/59
BRIDGEWATER-BK 33-PG 395-12A/59

BRIDGEWATER
F-020-2(5)
Sheet 16 of 141 Sheets

6