

SHEET NO. INDEX OF SHEETS

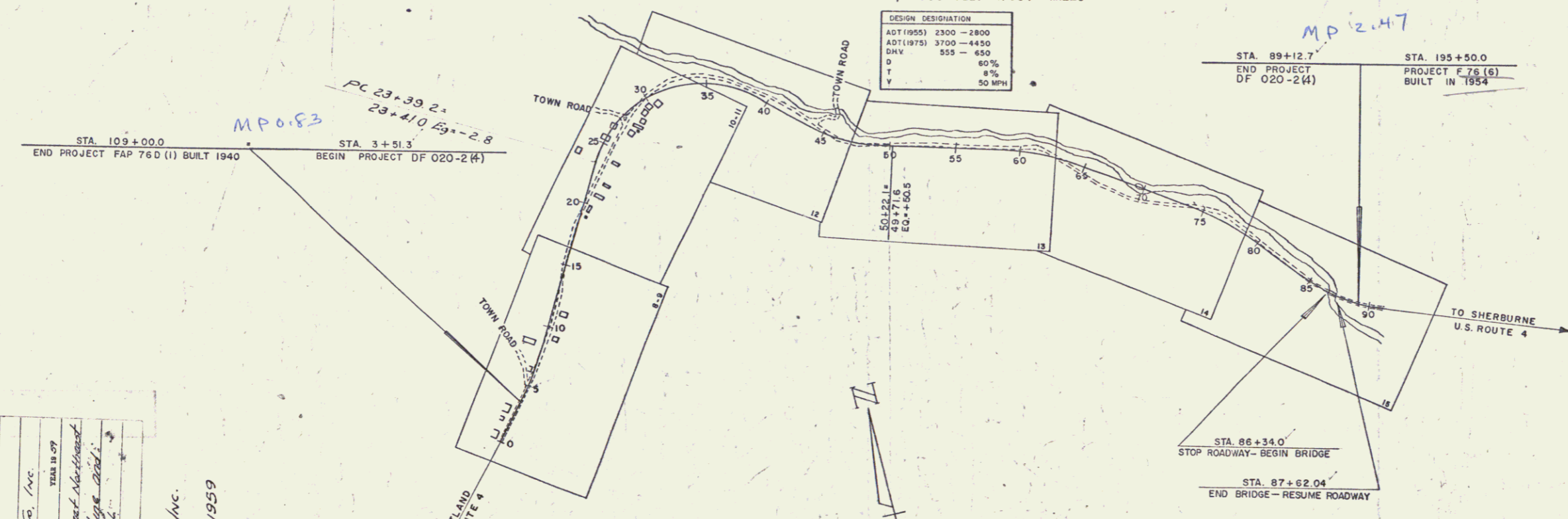
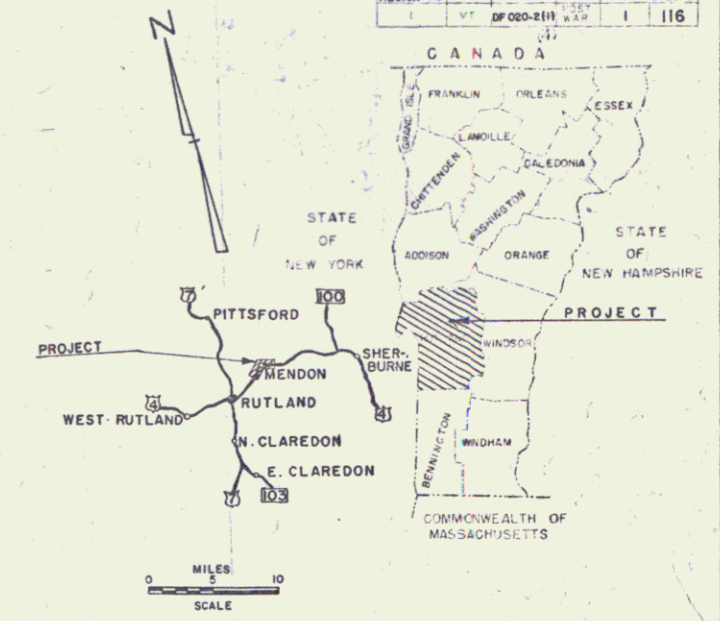
- 1 TITLE PAGE
- 2 & 2-A TYPICAL CROSS SECTION OF IMPROVEMENT DOUBLE TACK COAT OF CUTBACK ASPHALT WITH PEA STONE SEAL, ITEM 312-B
- 3 QUANTITY SHEET (ITEMS)
- 4 QUANTITY SHEET (DRAINAGE)
- 5-7 EARTHWORK SHEETS (ROADWAY)
- 8-15 PLAN AND PROFILE
- 16 PRELIMINARY BRIDGE SHEET (INFORMATION)
- 17 SUPERSTRUCTURE PLAN
- 18 DETAILS, ABUTMENT NO. 1
- 19 DETAILS, OF PIER
- 20 DETAILS, ABUTMENT NO. 2
- 21 REINFORCING STEEL SCHEDULE
- 22 EARTHWORKS (BRIDGE)
- 23 BRIDGE STANDARD SCB-42-56
- 24 BRIDGE STANDARD SB-20-56
- 25 BRIDGE STANDARD SB-56-57
- 26 BRIDGE STANDARD SB-AS-45-57
- 27 BRIDGE STANDARD SB-56-2
- 28 ROADWAY STANDARD RS-56-1 BANKING
- 29 ROADWAY STANDARD RS-56-3 MARKERS
- 30 ROADWAY STANDARD RS-56-4 DRAINAGE
- 31 ROADWAY STANDARD RS-56-6 TYPICAL SLOPE GRADING
- 32 ROADWAY STANDARD RS-56-11 THREE CAB. ROAD RAIL
- 33 ROADWAY STANDARD RS-56-12 BARRICADES, SIGNS, & LIGHTS
- 34 ROADWAY STANDARD RS-56-14 PRECAST REINFORCED CONCRETE DROP INLET & CONCRETE BOX
- 35 ROADWAY STANDARD A-61 DRILLING AND BLASTING
- 35-A ROADWAY STANDARD RS-57-9 FLUSHING BASINS
- 36-42 CHANNEL SECTIONS
- 43-116 CROSS SECTIONS

STATE OF VERMONT  
DEPARTMENT OF HIGHWAYS

PROPOSED IMPROVEMENT

FEDERAL PROJECT  
**TOWN OF MENDON**  
COUNTY OF RUTLAND *Pin # 99R175*  
**U. S. ROUTE 4**  
RUTLAND-SHERBURNE ROAD

BEGINNING AT A POINT 4,381 FEET NORTHEAST OF THE RUTLAND-MENDON TOWN LINE AND EXTENDING EASTERLY 8510.8 FEET  
 LENGTH OF ROADWAY 8,483.86 FEET = 1.607 MILES  
 LENGTH OF BRIDGE 128.04 FEET = 0.024 MILE  
 LENGTH OF PROJECT 8,611.90 FEET = 1.631 MILES



PROJECT - NAME & NUMBER MENDON DF 020-2(A)
Type Pavement & Area Double Tack Coat of Cutback Asphalt with Pea Stone Seal - 24,174 sq. yds.
RECORD PLANS
MATERIALS
Gravel Subbase - Billings & Sons Corp. Proctor on Best Gravel, Mendon, Vt.
Cutback Asphalt - J. J. Collins & Sons, Mendon, Vt.
Reinforced Concrete Pipe - Vermont Concrete Pipe Works, Vt.
Asphalted Curb Material - Wm. Gray & Sons, Mendon, Vt.
Guard Rail Cable - Portland Pipe & Cable Co., Portland, Me.
Concrete - Iron Lad Concrete Co., Burlington, Vt.
Asphalt - J. J. Collins & Sons, Mendon, Vt.
Reinforcing Steel - Vermont Structural Steel Co., Burlington, Vt.
Gravel Bridge Curb - Wm. Gray & Sons, Mendon, Vt.
Bridge Railing - Ward-Walker Co., Hudson, N.H.
Contractor - Lambert Bros. & Co., Portland, Me.
Assistant Engineer - J. R. Phelan
Inspector - W. S. Farnham, R. Robinson, M. Davis
Contract Value - \$1,200,000
Contract Period - June 23, 1958
Construction Started - June 23, 1958
Contract Completed - November 3, 1959

ROW COUNTY MENDON  
 TOWN LINE  
 FENCE LINE  
 STONE WALL  
 UNFENCED GUARD RAIL  
 TRAVEL CENTER  
 RAILROAD CENTER  
 RETAINING WALL  
 SURVEY CENTER  
 CULVERT  
 DROP INLET  
 TROLLEY  
 POWER  
 TELEPHONE  
 TREES  
 HEDGES

LOCATION: Beginning at a point 4,381 feet northeast of the Rutland-Mendon town line, extending easterly 8,611.90 feet.

MENDON DF 020-2(A)  
 CONTRACTOR: Lambert Construction Co., Inc.  
 COUNTY ENGINEER: J. R. Phelan  
 DATE: Nov. 3, 1959

SCALES

TITLE	1" = 500'
TYPICAL	1" = 2'
PLAN	1" = 50'
PROFILE	1" = 50'
CROSS-SECTIONS	1" = 5' & 10'

CURVE DATA

DEFLECTION OF ANGLE	A
DEGREE OF CURVE	D
RADIUS OF CURVE	R
ANGENT DISTANCE	T
LENGTH OF CURVE	L
EXTERNAL DISTANCE	E
POINT OF INTERSECTION	PI
POINT OF CURVE	P.C.
POINT OF TANGENT	P.T.
POINT ON TANGENT	P.O.T.
POINT ON SUB-TANGENT	P.O.S.T.

RIGHT-OF-WAY DIVISION  
 TOWN FILE  
 PERPETUAL  
 Town of U.S.

THESE PLANS ARE SUBJECT TO SUCH REVISIONS AS MAY BE REQUIRED BY THE BUREAU OF PUBLIC ROADS OR THE COMMISSIONER OF HIGHWAYS.

CONSTRUCTION IS TO BE CARRIED ON IN ACCORDANCE WITH THE PLANS AND THE STANDARD SPECIFICATIONS FOR HIGHWAY AND BRIDGE CONSTRUCTION OF JANUARY 1956 SUBMITTED TO THE BUREAU OF PUBLIC ROADS AS APPROVED JULY 5, 1956, INCLUDING ALL SUBSEQUENT APPROVED REVISIONS AND SUCH REVISED SPECIFICATIONS AND SPECIAL PROVISIONS AS ARE SUBMITTED WITH THE PLANS.

APPROVED DATE	APPROVED DATE 2/21/59	APPROVED DATE May 22, 1958	APPROVED DATE May 20, 1958	APPROVED DATE May 19, 1958	APPROVED DATE May 19, 1958
------------------	--------------------------	-------------------------------	-------------------------------	-------------------------------	-------------------------------

DEPARTMENT OF COMMERCE BUREAU OF PUBLIC ROADS
APPROVED
DIVISION ENGINEER DATE
PROJECT DF wd. 020-2 (A)
SHEET 1 OF 116 SHEETS



Steel Girder Rests  
Sta 5+00 LT RT  
1410 2154 18

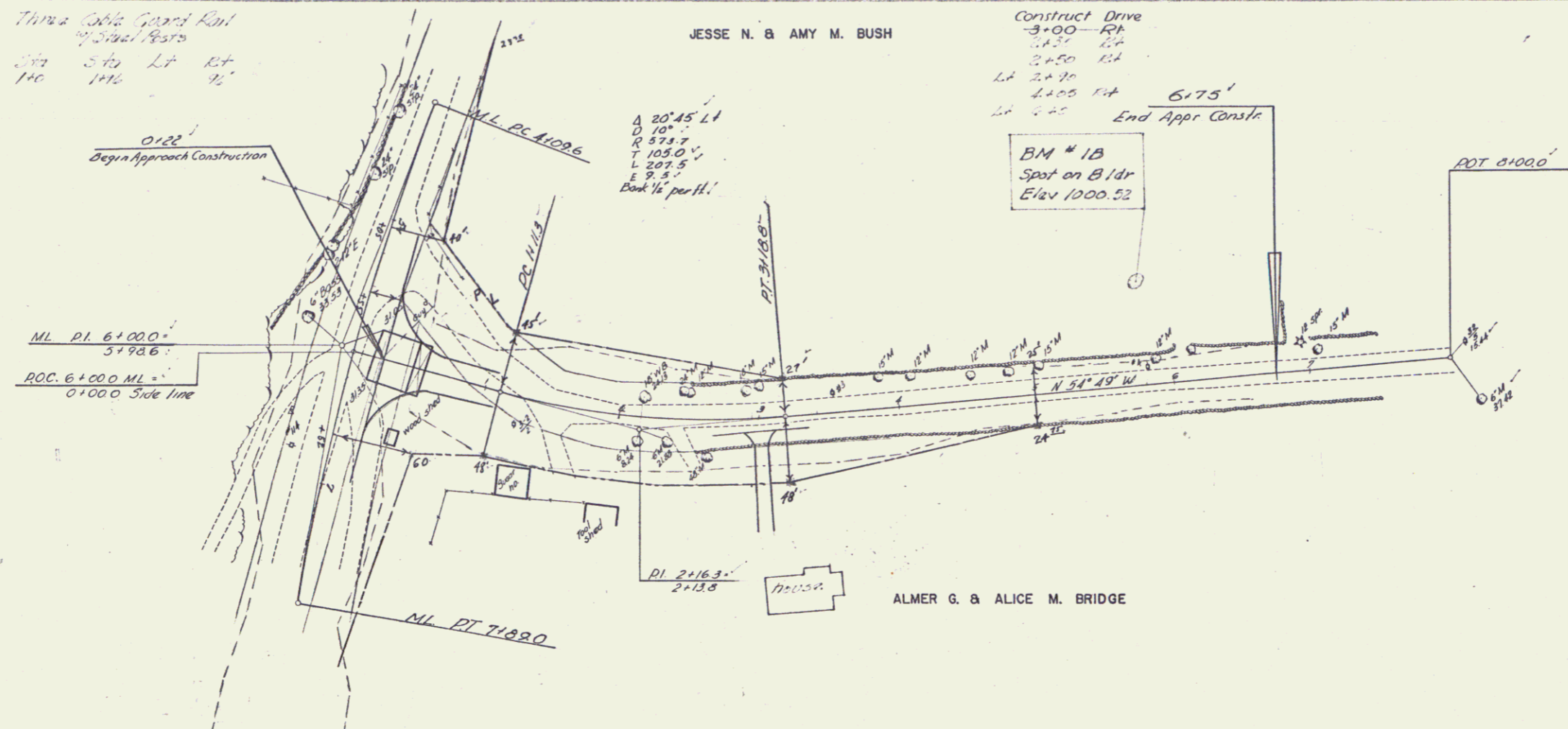
Three Cable Guard Rail  
27' Spacing  
Sta 5+00 LT RT  
140 140

JESSE N. & AMY M. BUSH

Construct Drive  
3+00 RT  
1.5' LT  
2+50 RT  
LT 2+30  
2+00 RT  
LT 2+25

6175'  
End Appr Constr  
BM # 1B  
Spot on Bldr  
Elev 1000.52

$\Delta 20'45" \text{ L}$   
D 10'  
R 573.7  
T 105.0  
L 207.5  
E 9.5'  
Back 16' per ft.

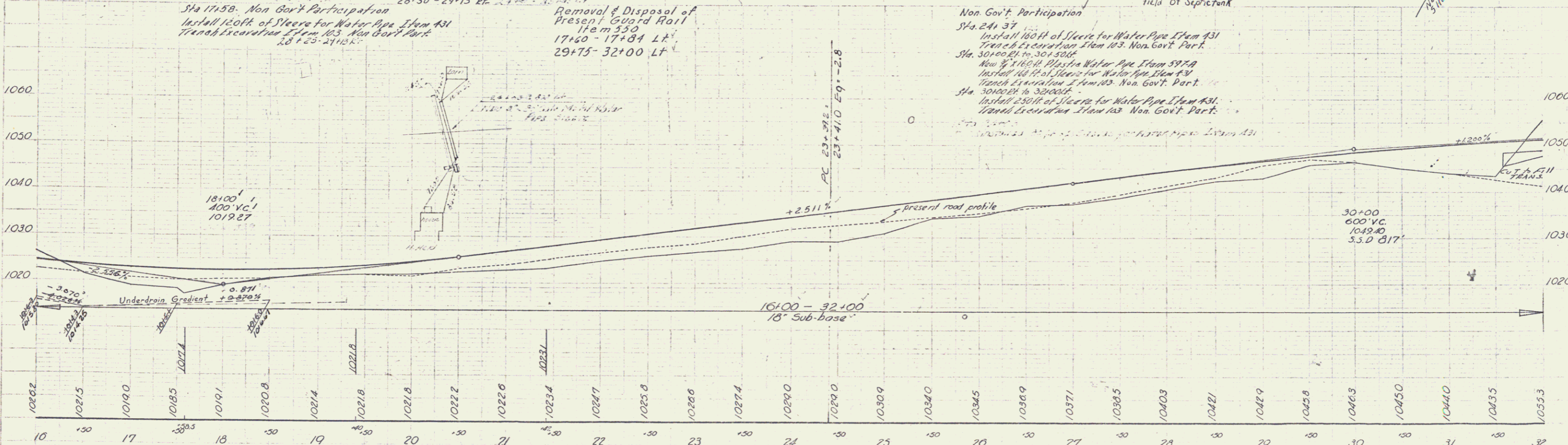
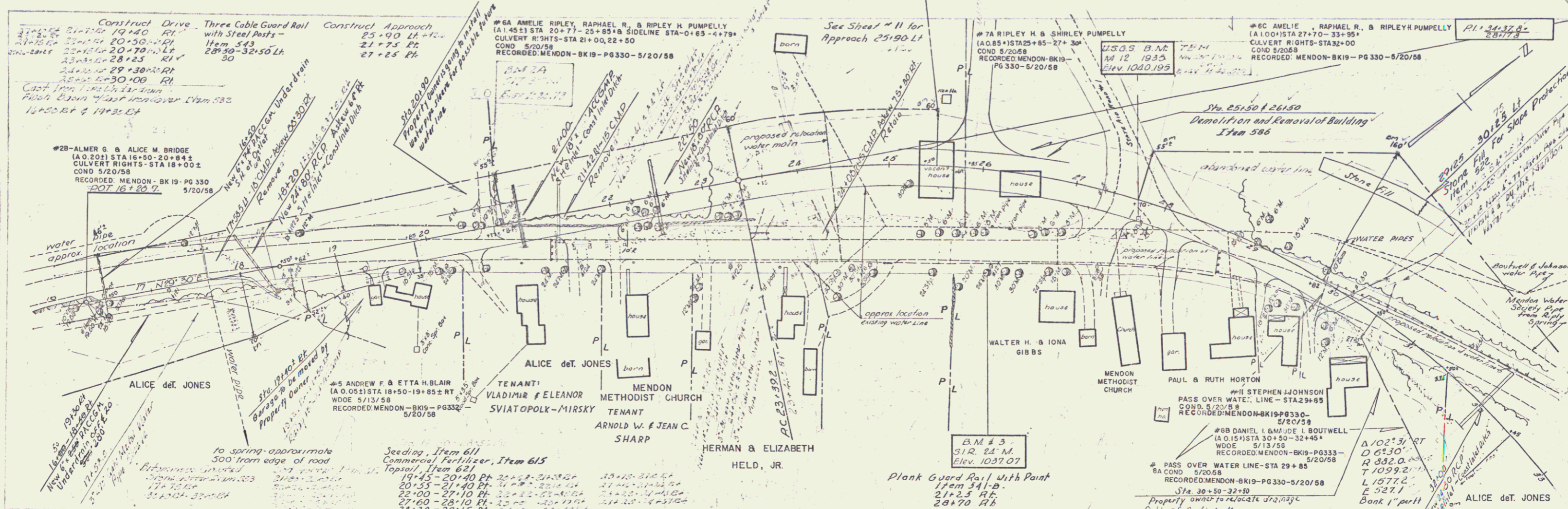


PLAN  
Scale: 1" = 40'  
Date: 11/11/11

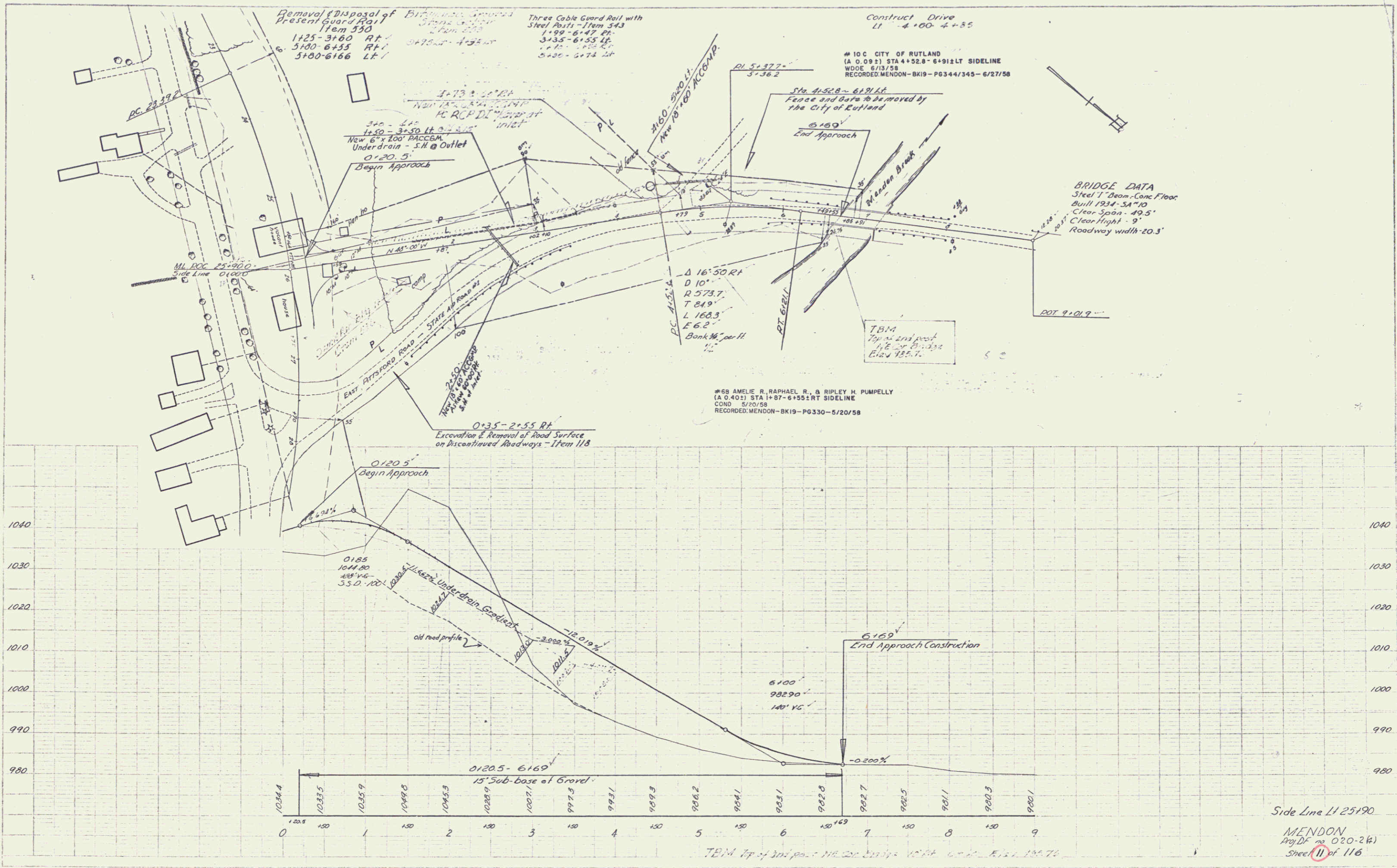
PROFILE  
Scale: 1" = 10'  
Date: 11/11/11

BM 1B Spot on boulder 75' Lt Sta 8+80 Elev 1000.52

(Side Line) 6+00.0  
MENDON  
Proj. No. 020-2(4)  
Sheet 9 of 116



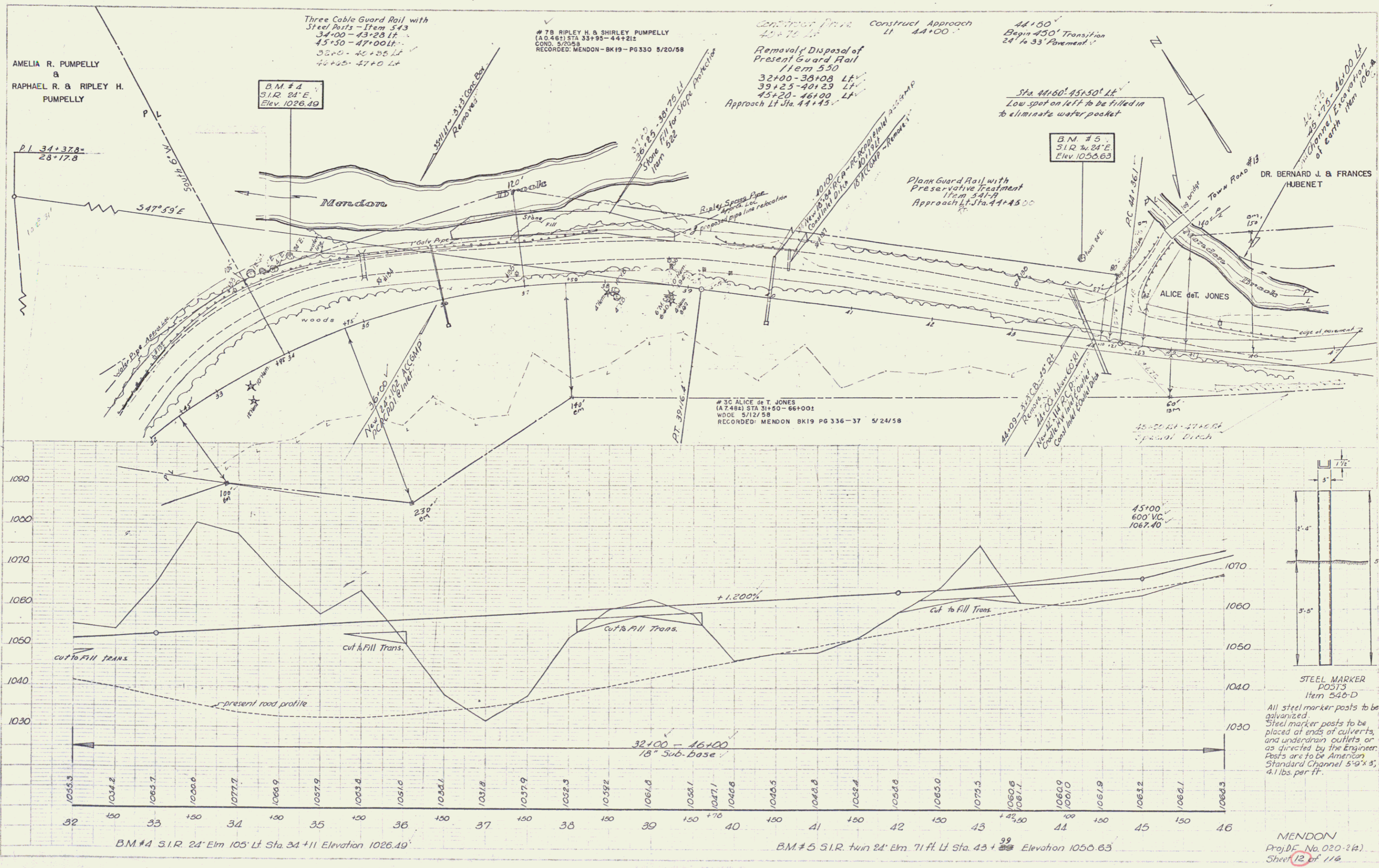
B.M. 2A S.W. 1/4 Sec. 18, T. 22, R. 13  
 B.M. 3 S.W. 1/4 Sec. 24, T. 22, R. 13  
 U.S.G.S. B.M. 112-1935-36 21 Sta 27156 Elev 1040.195  
 MENDON  
 Proj. DE No. 020-24  
 Sheet 10 of 116



PLAN  
 Scale: 1" = 40'

PROFILE  
 Scale: 1" = 40'

Side Line LI 25+190  
 MENDON  
 Proj. DF no. 020-2(A)  
 Sheet 11 of 116



AMELIA R. PUMPELLY  
 &  
 RAPHAEL R. & RIPLEY H.  
 PUMPELLY

BM #4  
 S.I.R. 24"E  
 Elev. 1026.49

# 7B RIPLEY H. & SHIRLEY PUMPELLY  
 (A.O. 46) STA 33+95 - 44+21  
 COND. 5/20/58  
 RECORDED: MENDON - BK 19 - PG 330 5/20/58

Remove Disposal of  
 Present Guard Rail  
 Item 550  
 32+00 - 36+08 LF  
 39+25 - 40+29 LF  
 45+20 - 46+00 LF  
 Approach Lt. Sta. 44+45

44+50  
 Begin 450' Transition  
 24' to 33' Pavement

BM #5  
 S.I.R. 24"E  
 Elev. 1050.63

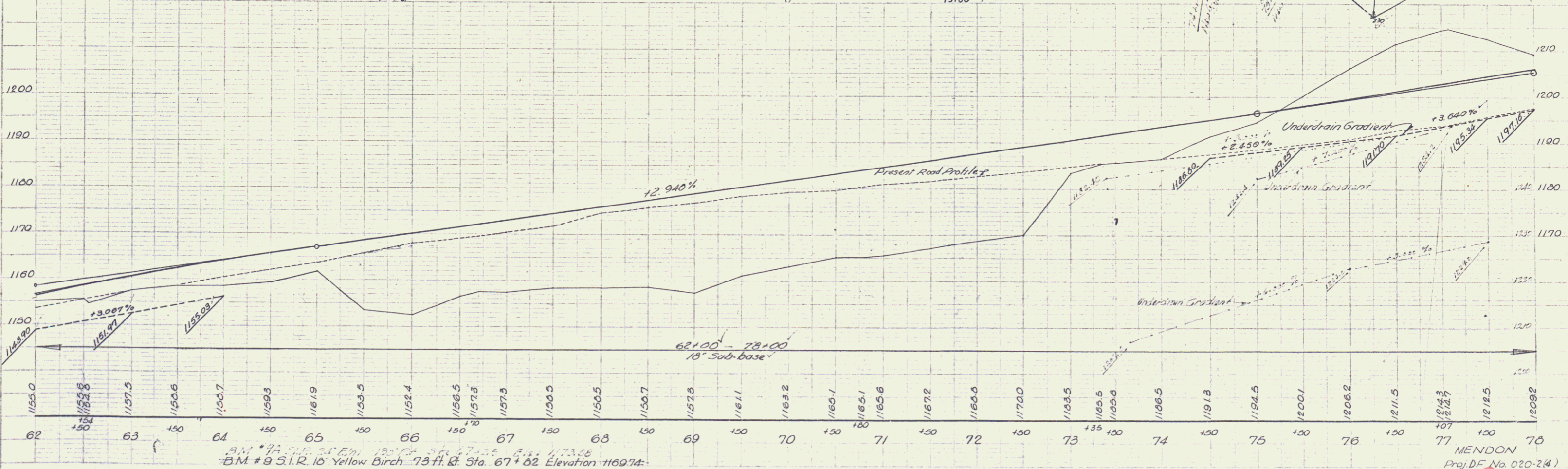
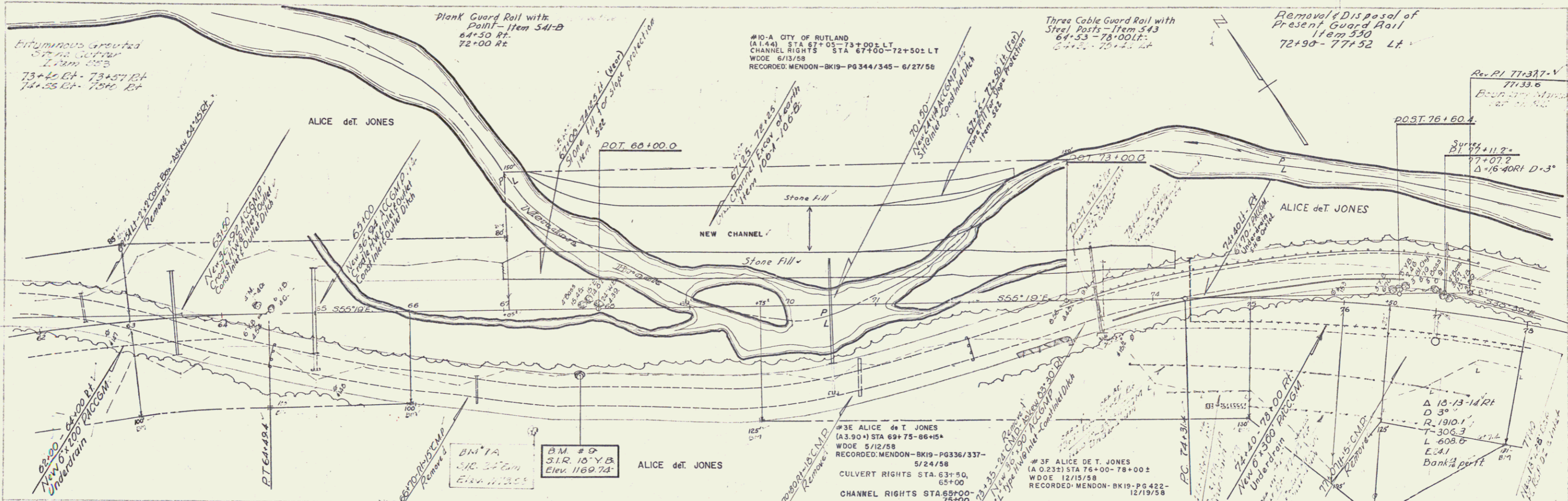
Plank Guard Rail with  
 Preservative Treatment  
 Item 541-B  
 Approach Lt. Sta. 44+45.00

# 3C ALICE & T. JONES  
 (A. 7.48) STA 31+50 - 66+00  
 WOODS 5/12/58  
 RECORDED: MENDON BK 19 PG 336-37 5/24/58

STEEL MARKER  
 POSTS  
 Item 546-D  
 All steel marker posts to be  
 galvanized.  
 Steel marker posts to be  
 placed at ends of culverts,  
 and underdrain outlets or  
 as directed by the Engineer.  
 Posts are to be American  
 Standard Channel 5" x 3"  
 4.1 lbs. per ft.

MENDON  
 Proj. No. 020-3(A)  
 Sheet 12 of 116



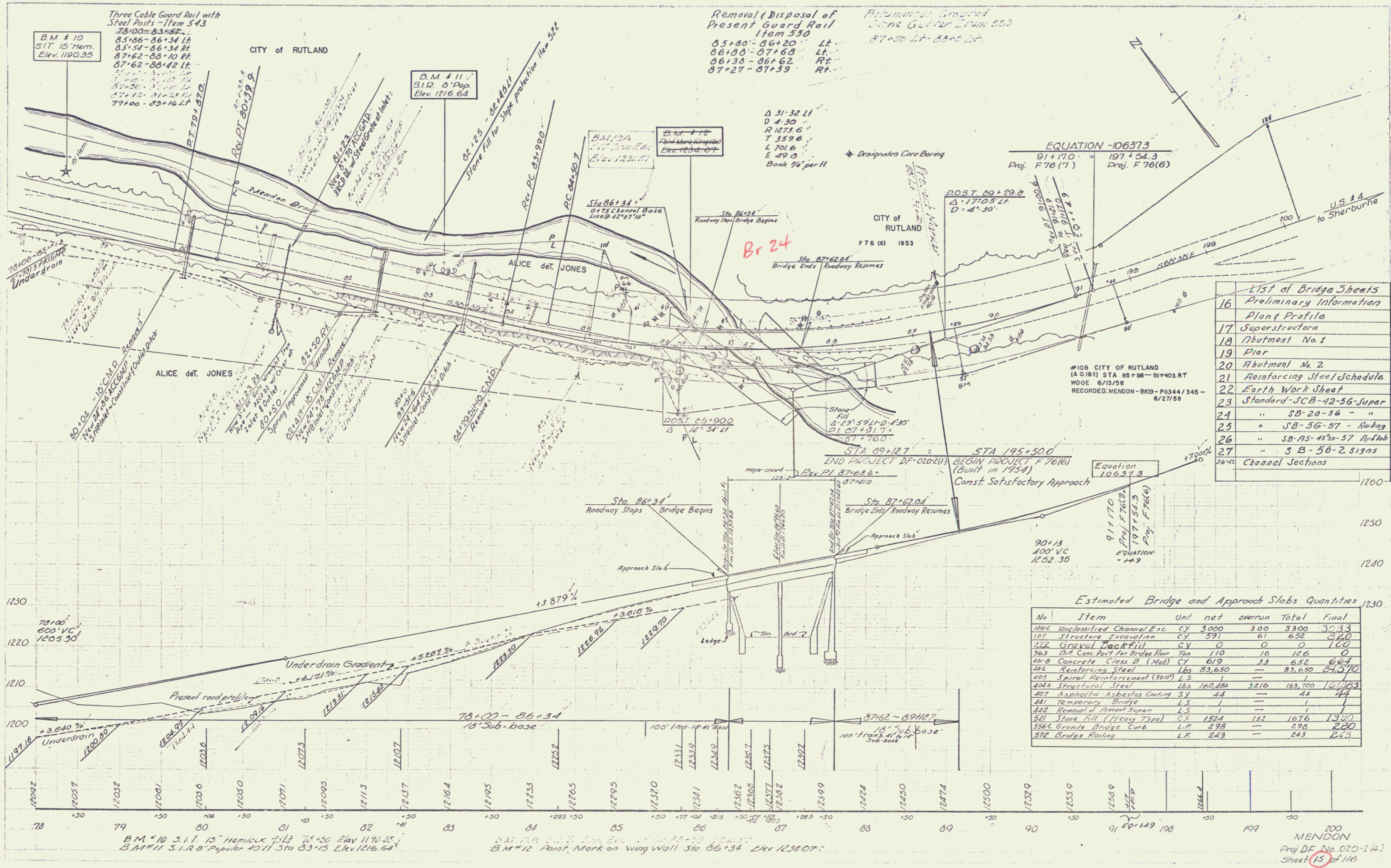


REVISED  
 1-57  
 5-57  
 8-57  
 1-58  
 1-59  
 1-60  
 1-61  
 1-62

REVISED  
 1-57  
 5-57  
 8-57  
 1-58  
 1-59  
 1-60  
 1-61  
 1-62

B.M. #7A S.I.R. 24' Elm. 135' to Sta. 67+02 Elev. 1173.06  
 B.M. #9 S.I.R. 10' Yellow Birch 73 ft. R. Sta. 67+02 Elevation 1169.74

MENDON  
 Proj. D.F. No. 020-2(4)  
 Sheet 14 of 116



Removal/Disposal of Present Guard Rail Item 530  
 85+80 - 86+20 Lt.  
 86+80 - 87+68 Lt.  
 86+30 - 86+62 Rt.  
 87+27 - 87+39 Rt.

Approximate Grouted Stone Gutters Item 533  
 87+50 Lt - 88+00 Lt

Three Cable Guard Rail with Steel Posts - Item 543  
 78+00 - 83+50  
 85+86 - 86+34 Lt.  
 85+59 - 86+34 Rt.  
 87+62 - 88+10 Rt.  
 87+62 - 88+42 Lt.  
 79+00 - 85+16 Lt.

B.M. #11  
 S.I.R. 0" Pop.  
 Elev. 1216.64

B.M. #12  
 Point Marking (Wing Wall)  
 Elev. 1234.07

EQUATION - 106373  
 91+17.0 = 197+54.3  
 Proj. F76(7) Proj. F76(6)

List of Bridge Sheets Preliminary Information

16	Plan & Profile
17	Superstructure
18	Abutment No. 1
19	Pier
20	Abutment No. 2
21	Reinforcing Steel Schedule
22	Earth Work Sheet
23	Standard - SCB-42-56-Super
24	" SB-20-56 - "
25	" SB-56-57 - Rubbing
26	" SB-AS-45-57 Asphalt
27	" SB-56-2 Signs
36-42	Channel Sections

Estimated Bridge and Approach Slabs Quantities

No	Item	Unit	net	overrun	Total	Final
106c	Unclassified Channel Exc.	CY	3000	300	3300	3033
107	Structure Excavation	CY	391	61	652	320
222	Gravel Filler	CY	0	0	0	100
363	Dist. Conc. Pavt. for Bridge Hbr	Ton	110	10	120	0
40-B	Concrete Class B (Med)	CY	619	33	652	664
402	Reinforcing Steel	Lbs	83,650	—	83,650	84,270
403	Spiral Reinforcement (300")	L.S.	1	—	1	1
404	Structural Steel	Lbs	160,469	3216	163,700	162,303
407	Asphaltic Asphaltos Coating	S.Y.	44	—	44	44
441	Temporary Bridge	L.S.	1	—	1	1
442	Removal of Present Super	L.S.	1	—	1	1
521	Stone Fill (Heavy Type)	CY	1324	132	1676	1350
554c	Granite Bridge Curb	L.F.	298	—	298	220
572	Bridge Railings	L.F.	243	—	243	243

Vertical Curve  
 1-57  
 2-57  
 F-57

Profile  
 1-57

B.M. #10 S.I.T. 15" Hammer Bolt 78+50 Elev. 1190.35  
 B.M. #11 S.I.R. 0" Pop. 83+15 Elev. 1216.64

B.M. #12 Point Mark on Wing Wall Sta 86+34 Elev. 1234.07

MENDON  
 Proj. DE No. 020-2(4)  
 Sheet 15 of 116