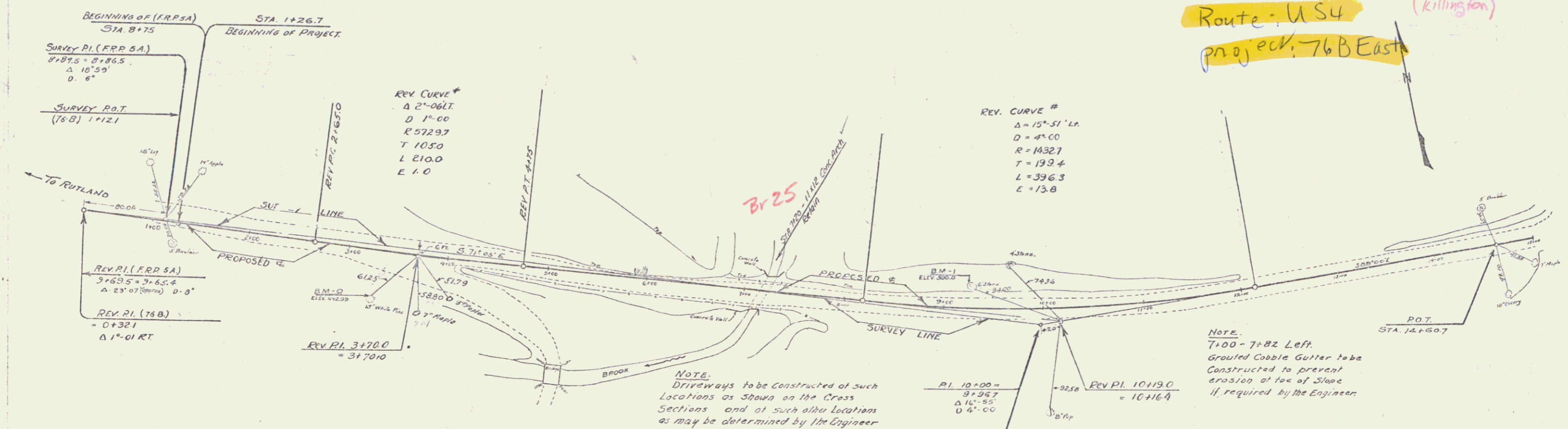


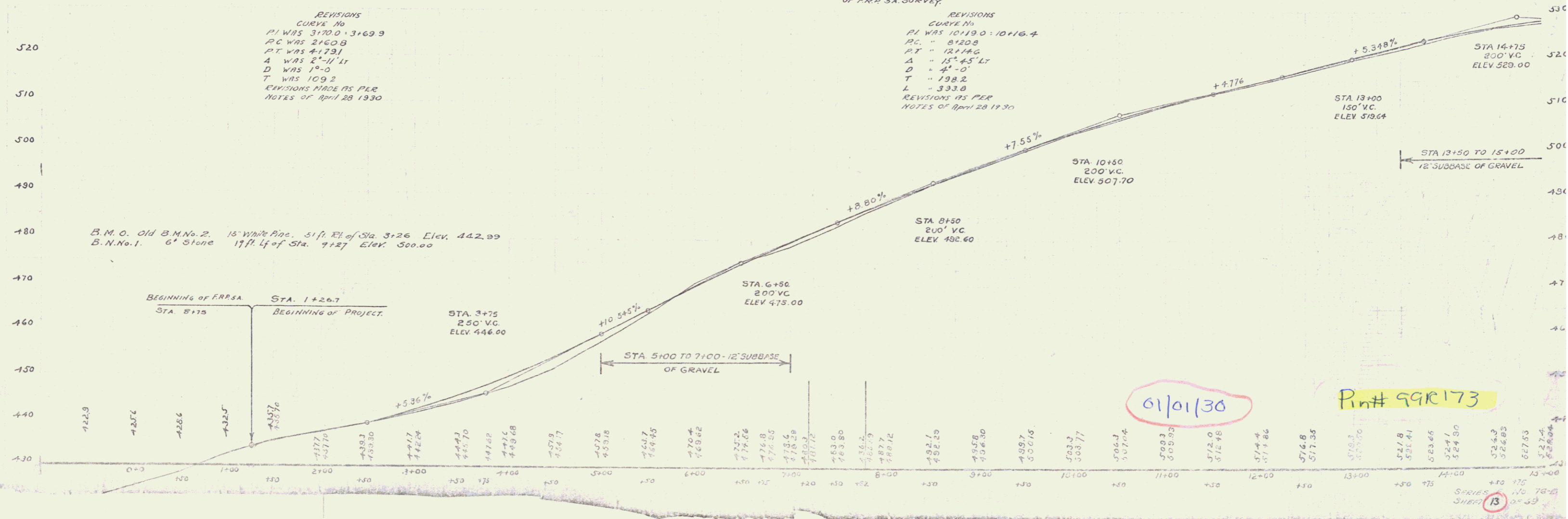
CABLE GUARD RAIL REQUIRED

STATION	LEFT	RIGHT
STA 4+15 TO 5+59	-	144'
" 6+84 - 7+32	40'	-
" 8+32 - 7+32	-	80'

Town: Mendon - Sturbridge
 Route: US 4 (Killington)
 Project: 76B East



NOTE:
 7+00 - 7+82 Left.
 Grouted Cobble Gutter to be
 Constructed to prevent
 erosion at toe of Slope
 if required by the Engineer



REVISIONS
 CURVE NO
 P1 WAS 3170.0 - 3+69.9
 PC WAS 2400.0
 PT WAS 4+17.1
 A WAS 2'-11.11
 D WAS 1'-0
 T WAS 109.2
 REVISIONS MADE AS PER
 NOTES OF APRIL 28 1930

REVISIONS
 CURVE NO
 P1 WAS 10+19.0 - 10+16.4
 PC = 8120.0
 PT = 12+14.0
 A = 15'-4.5 LT
 D = 4'-0
 T = 198.2
 L = 333.8
 REVISIONS AS PER
 NOTES OF APRIL 28 1930

B.M.O. Old B.M.No. 2. 15' White Pine. 51 ft. E. of Sta. 3+26 Elev. 442.89
 B.N.No. 1. 6' Stone 17 ft. E. of Sta. 7+27 Elev. 500.00

6/10/30

Plan # 99R173

WOOD GUARD RAIL REQUIRED

CULVERT STATION	LEFT	RIGHT
16+06	24'	—
20+50	24'	24'
22+27	24'	24'
28+76	24'	—

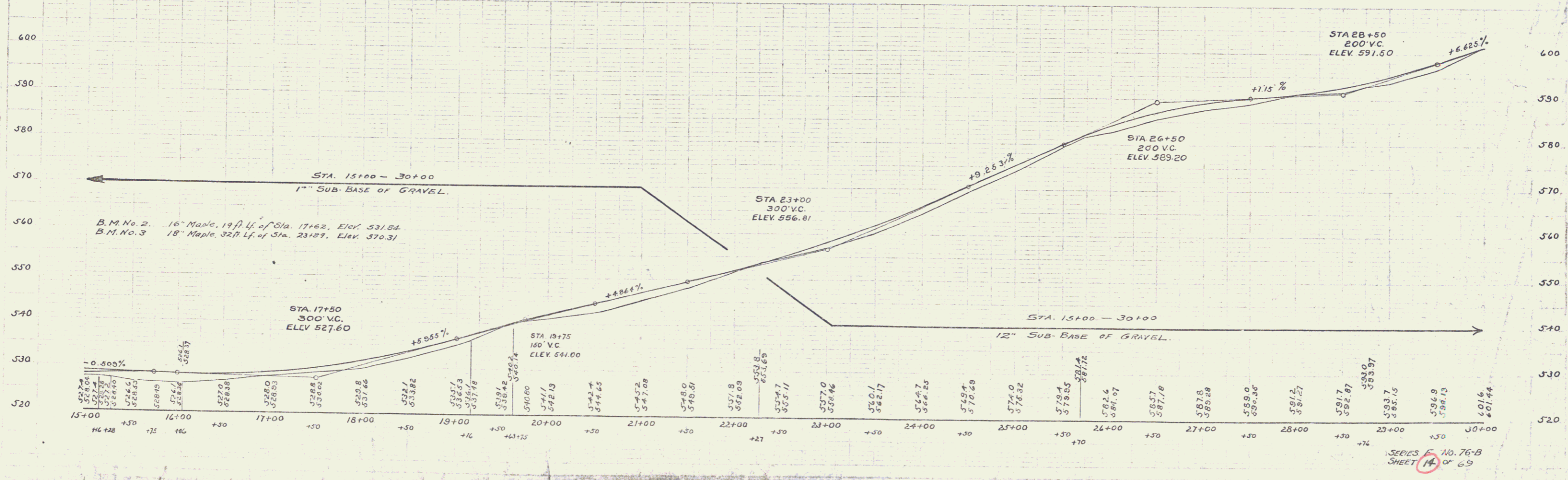
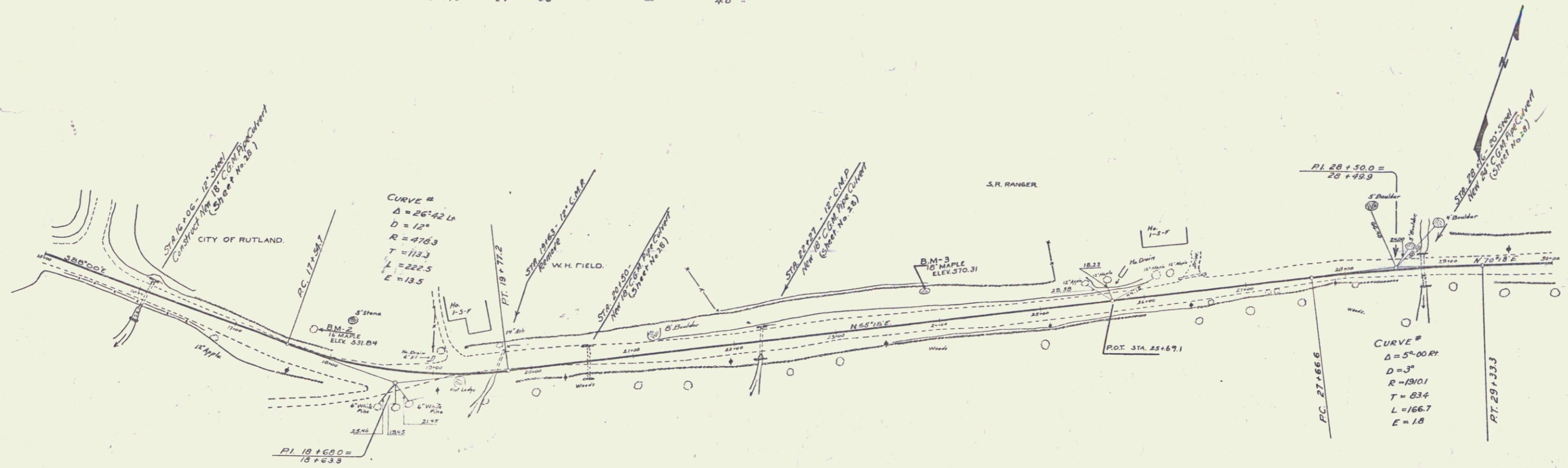
CABLE GUARD RAIL REQUIRED

STA.	LEFT	RIGHT
15+00 to 16+60	—	160'
28+00 to 28+88	—	48'

NEW CORRUGATED GALVANIZED METAL PIPE CULVERTS REQUIRED

STATION	DIAM.	LENG.	CULV. A.	REIN. STEEL	CONC. FILL	ESTIM. QUANTITY
16+06	18"	48'	—	—	—	3.3 c y
20+50	18"	32'	—	—	—	3.3 "
22+27	18"	32'	—	—	—	3.3 "
28+76	24"	36'	—	—	—	4.0 "

76-B 1950 H 69

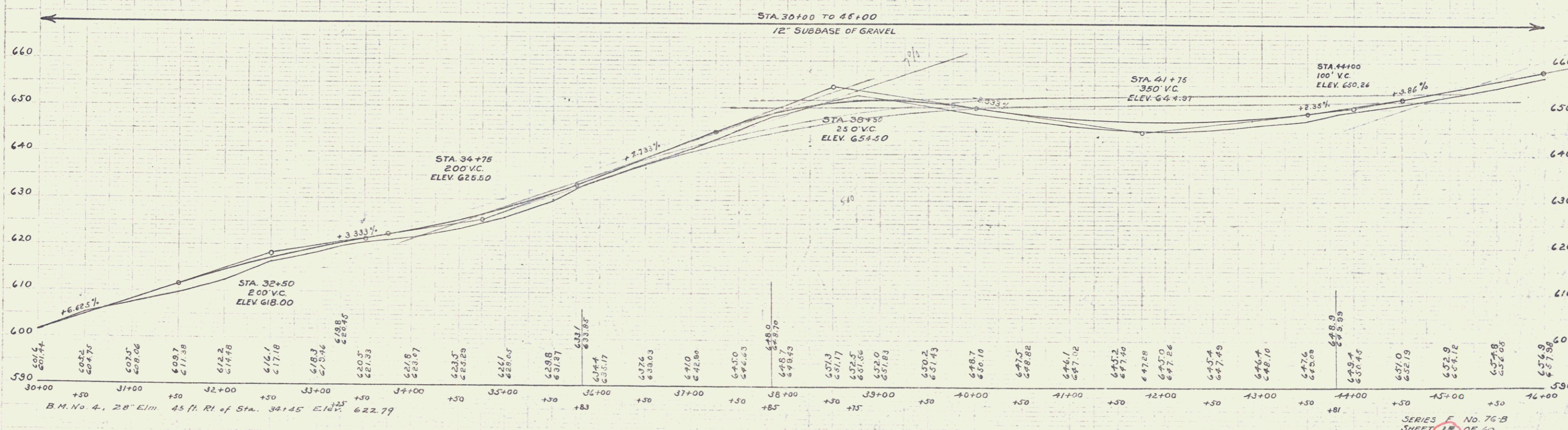
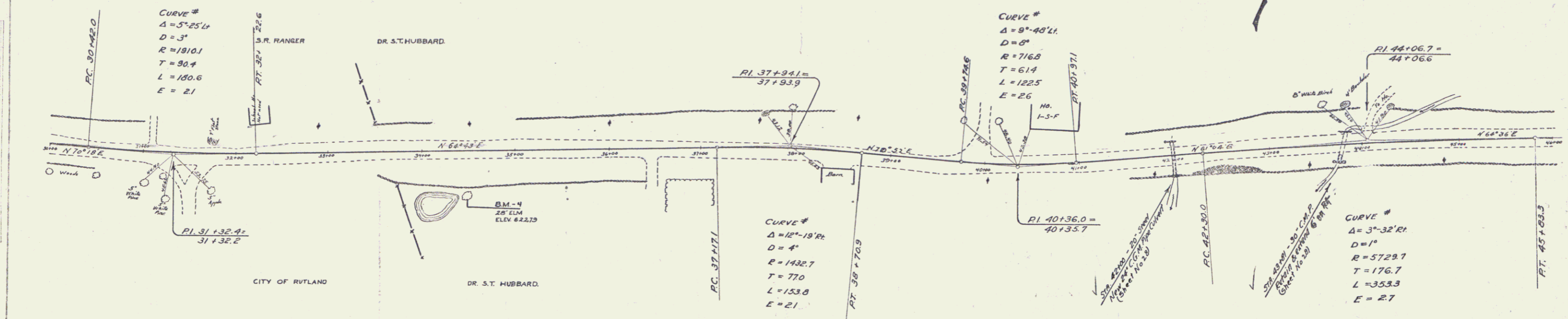


SERIES NO. 76-B
SHEET 14 OF 69

WOOD GUARD RAIL REQUIRED
 CURVE # 1
 STATION 42+00
 43+00

NEW CORRUGATED GALVANIZED METAL PIPE CULVERTS REQUIRED
 STATION 42+00
 43+00

76-B 1950 15 69



SERIES F No. 76-B
 SHEET 18 OF 69

WOOD GUARD RAIL REQUIRED

CULVERT STATION	LEFT	RIGHT
63+47	24'	24'
68+45	24'	24'
71+32	24'	24'
75+02	24'	24'

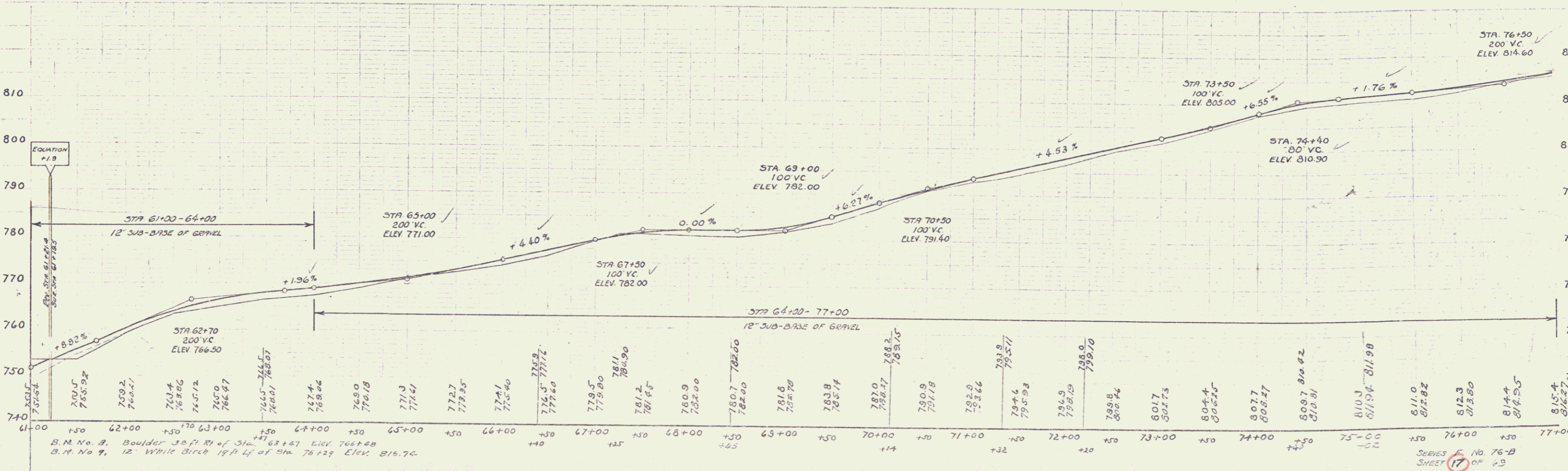
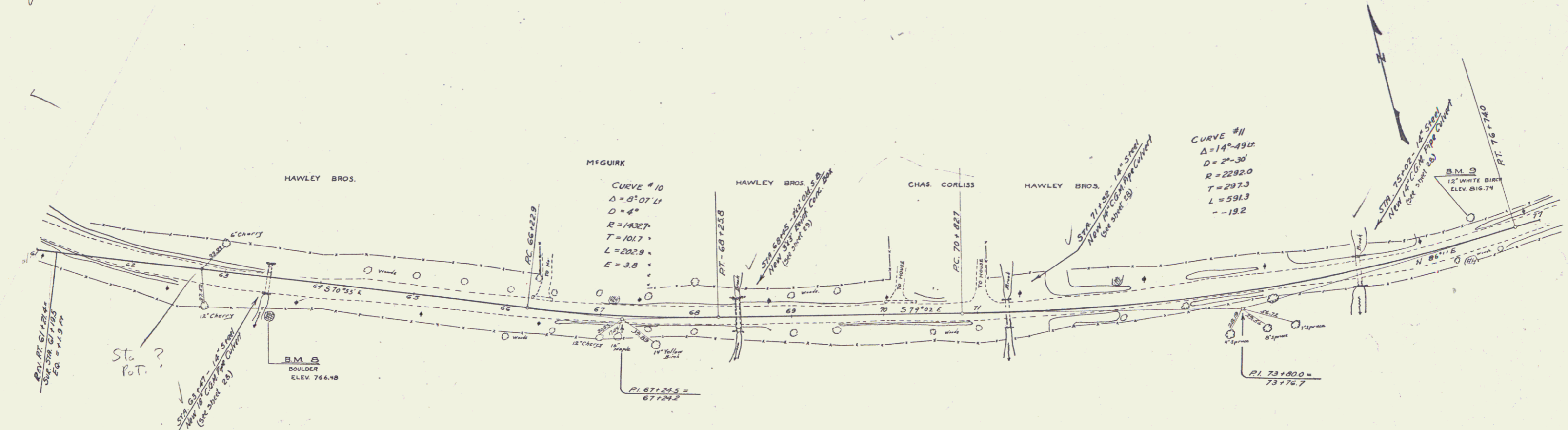
NEW CORRUGATED GALVANIZED METAL PIPE CULVERTS REQUIRED

STATION	DIAM	LENGTH	CONC. A	REIN. STEEL	CONC. RUB. MASSIVE
63+47	18"	34'	---	---	3.5'
71+32	14"	34'	---	---	2.5'
75+02	14"	34'	---	---	2.5'

NEW REIN. CONC. BOX CULVERTS REQUIRED

STATION	SIZE	CONC. A	REIN. STEEL
68+45	3x3'	182x4	1218 lbs.

76B 1930 17 69



B.M. No. 8, Boulder Sta. 71 R of Sta. 63+47 Elev. 766.48
 B.M. No. 9, 12 White Birch 17 ft W of Sta. 76+12 Elev. 816.76

SERIES No. 76-B
 SHEET 17 OF 43

5

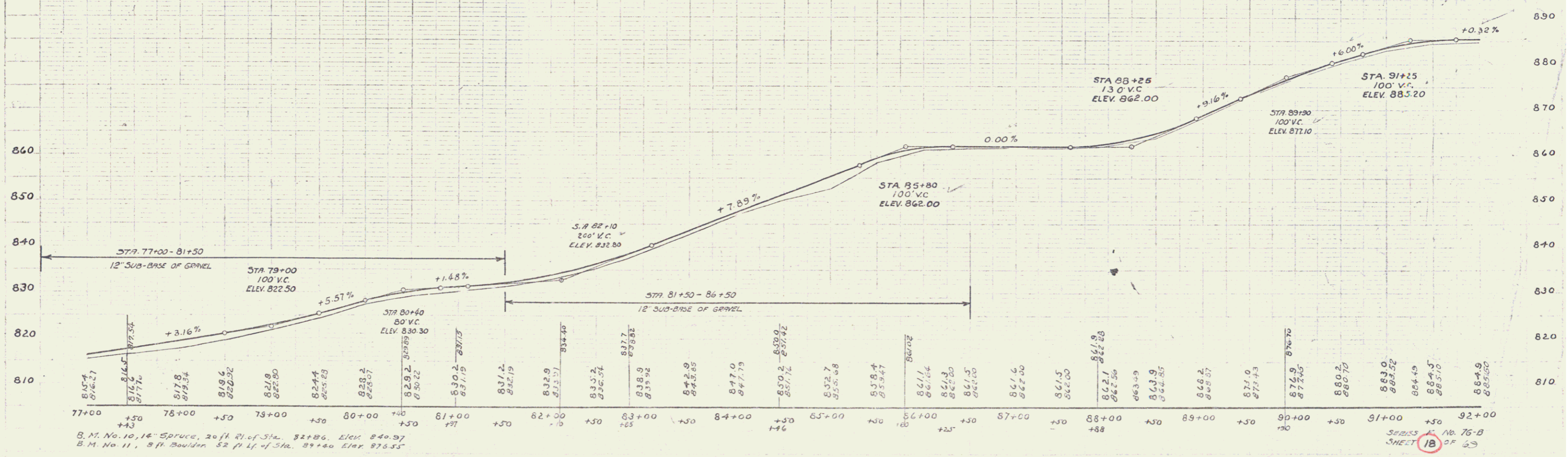
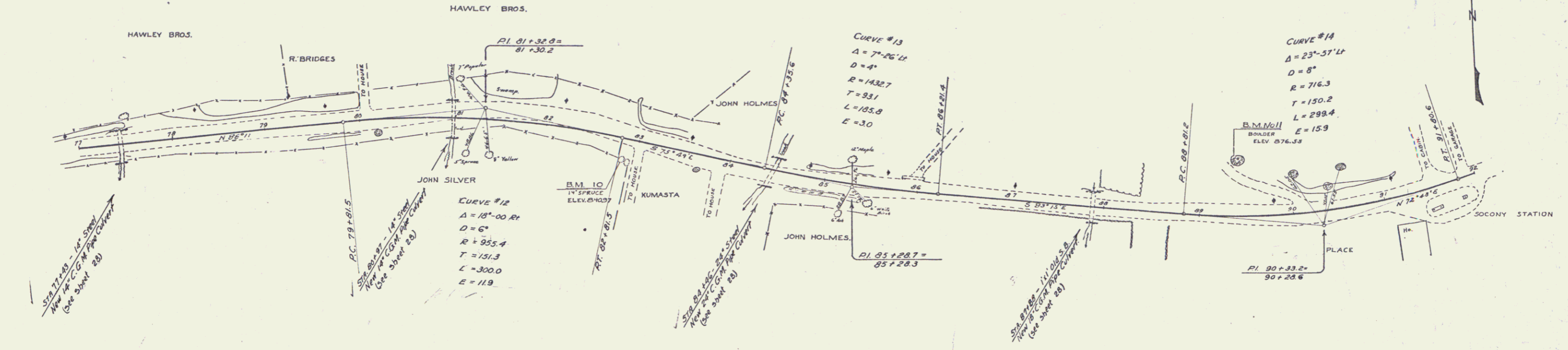
WOOD QUASI RAIL REQUIRED

CULVERT STATIONS	LEFT RISE	RIGHT RISE
77+00-83	24'	24'
80+37	24'	24'
86+46	24'	24'
87+00	24'	24'

NEW CORRUGATED GALVANIZED METAL PIPE CULVERTS REQUIRED

STATIONS	DIAM.	LENGTH	CROSS	KEY STAGE	CEN. PIV. MANHOLE
77+00-83	18"	36'	---	---	2.5 c.y.
80+37	18"	40'	---	---	3.3
86+46	24"	36'	---	---	4.0
87+00	18"	32'	---	---	3.3

Scale
 76-B 1950 10 69



B.M. No. 10, 16" Spruce, 20 ft. R. of Sta. 82+86, Elev. 840.97
 B.M. No. 11, 8 ft. Boulder, 52 ft. L. of Sta. 87+00, Elev. 876.53

SHEET 18 OF 23

6

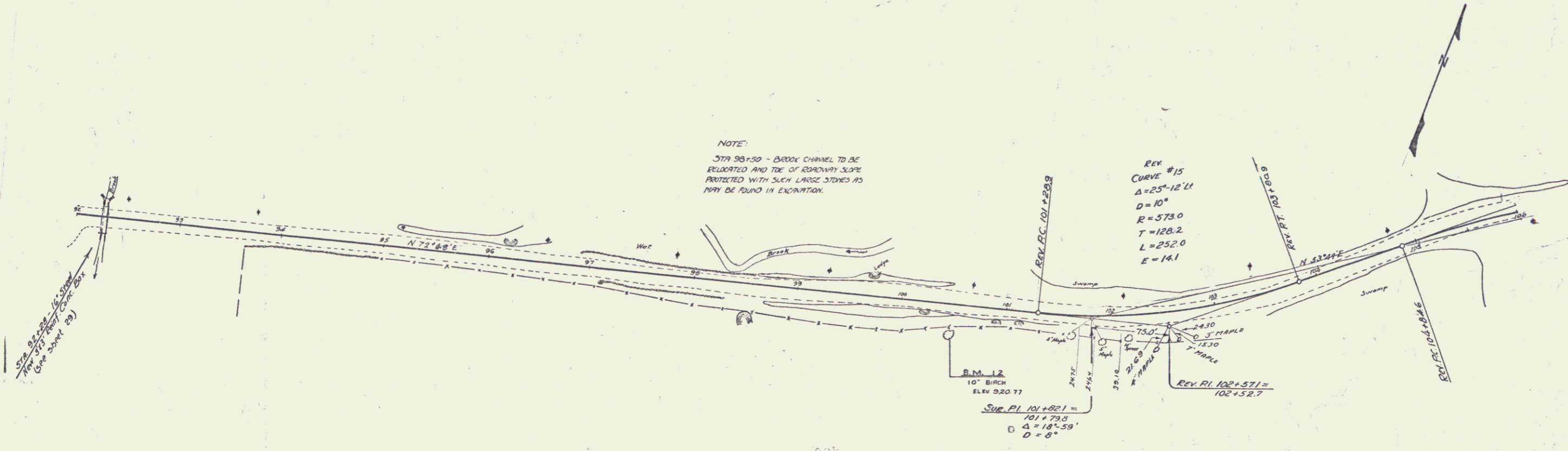
WOOD GUARD RAIL REQUIRED
 CULVERT STATION LEFT SIDE
 92+28 24' 24'

NEW BRINE CONC. BOX CULVERTS REQUIRED
 STATION SIZE CONC. A BRINE STRENGTH
 92+28 24' 16.0 c.y. 1065 lbs

76-B 120 19 69

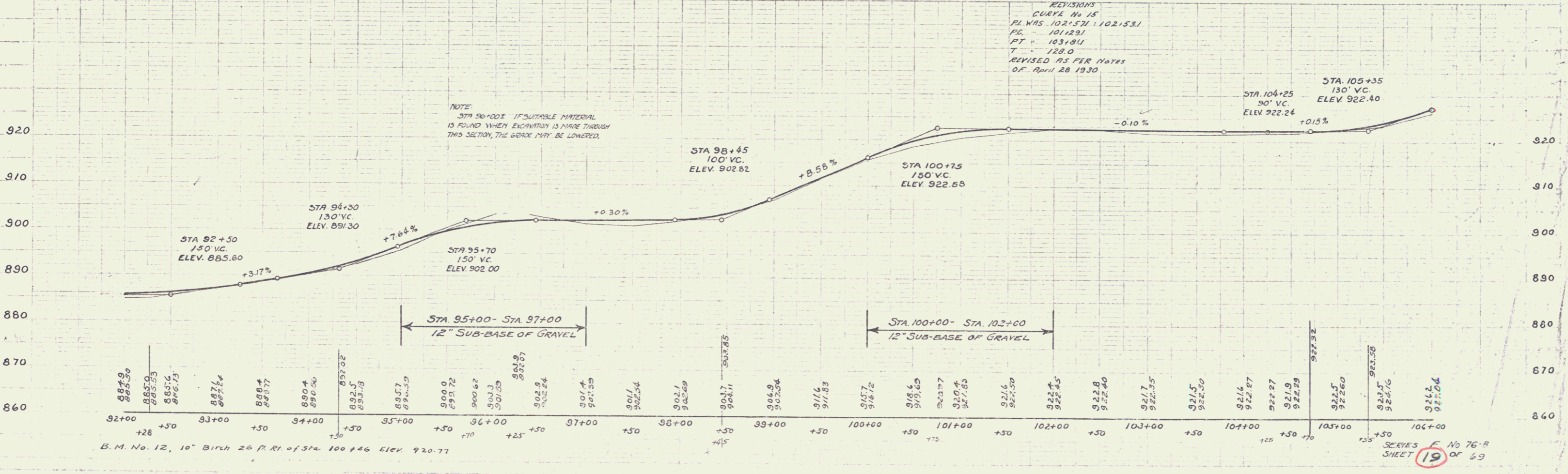
NOTE:
 STA 98+50 - DRAIN CHANNEL TO BE
 RELOCATED AND TOE OF ROADWAY SLOPE
 PROTECTED WITH SUCH LARGE STONES AS
 MAY BE FOUND IN EXCAVATION.

REV
 CURVE #15
 $\Delta = 25^\circ - 12' 11''$
 $D = 10^\circ$
 $R = 573.0$
 $T = 128.2$
 $L = 252.0$
 $E = 14.1$

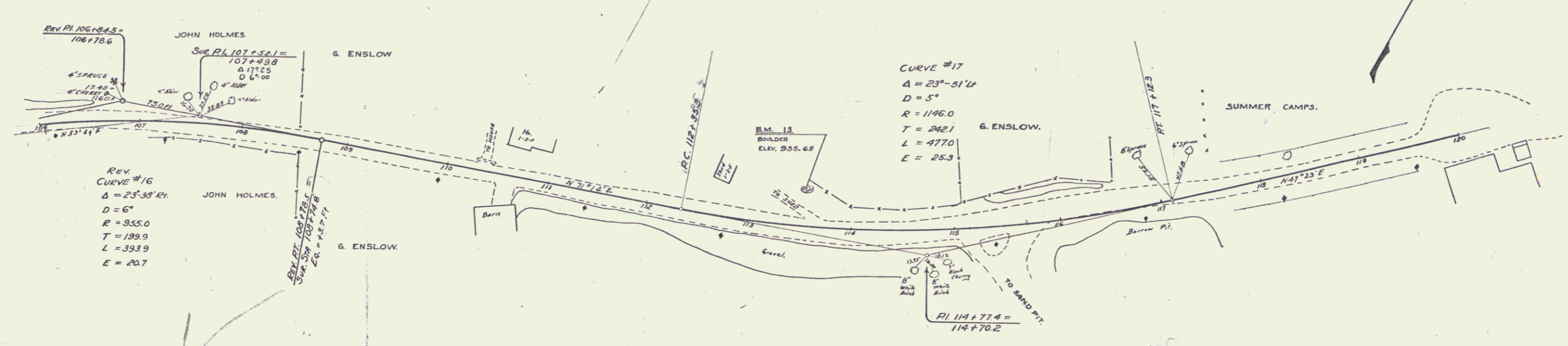


REVISIONS
 CURVE No 15
 P.I. WAS 102+53.1 - 102+53.1
 P.C. 101+23.1
 P.T. 103+83.1
 T = 128.0
 REVISED AS PER NOTES
 OF APRIL 28 1950

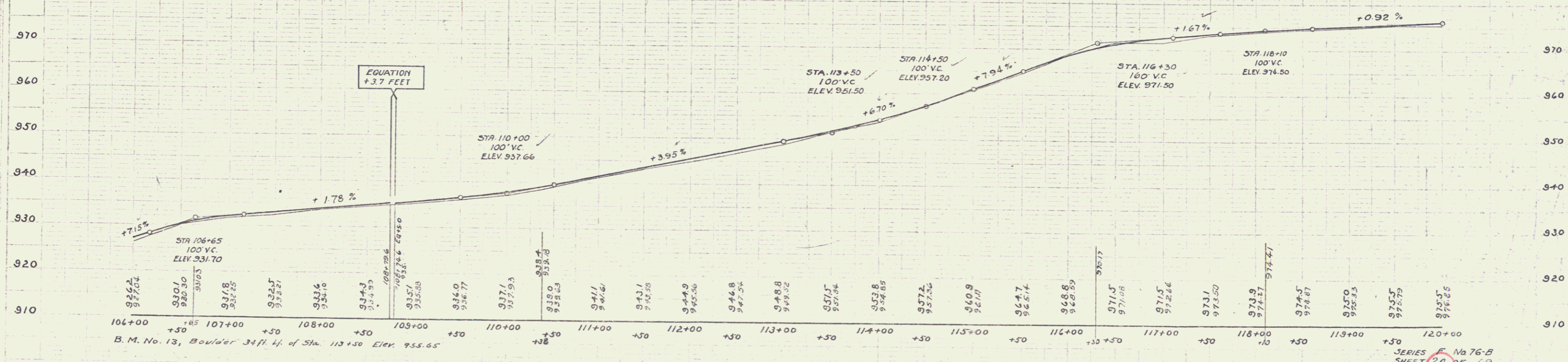
NOTE:
 STA 96+00 ± IF SUITABLE MATERIAL
 IS FOUND WHEN EXCAVATION IS MADE THROUGH
 THIS SECTION, THE GRADE MAY BE LOWERED.



SERIES F No 76-B
 SHEET 19 OF 69



REVISION
 CURVE NO. 16
 P.I. WAS 10618.55 = 106179.8
 P.C. = 104+85.7
 P.T. = 108179.6 = 108174.6
 EQU = +3.0'
 T = 199.9
 REVISED RE PLAN NOTES
 OF APRIL 28 1930



WOOD GUARD RAIL REQUIRED

CUVERT STATIONS	LEFT	RIGHT
124+19	24'	24'
131+22	24'	24'
132+90	24'	24'

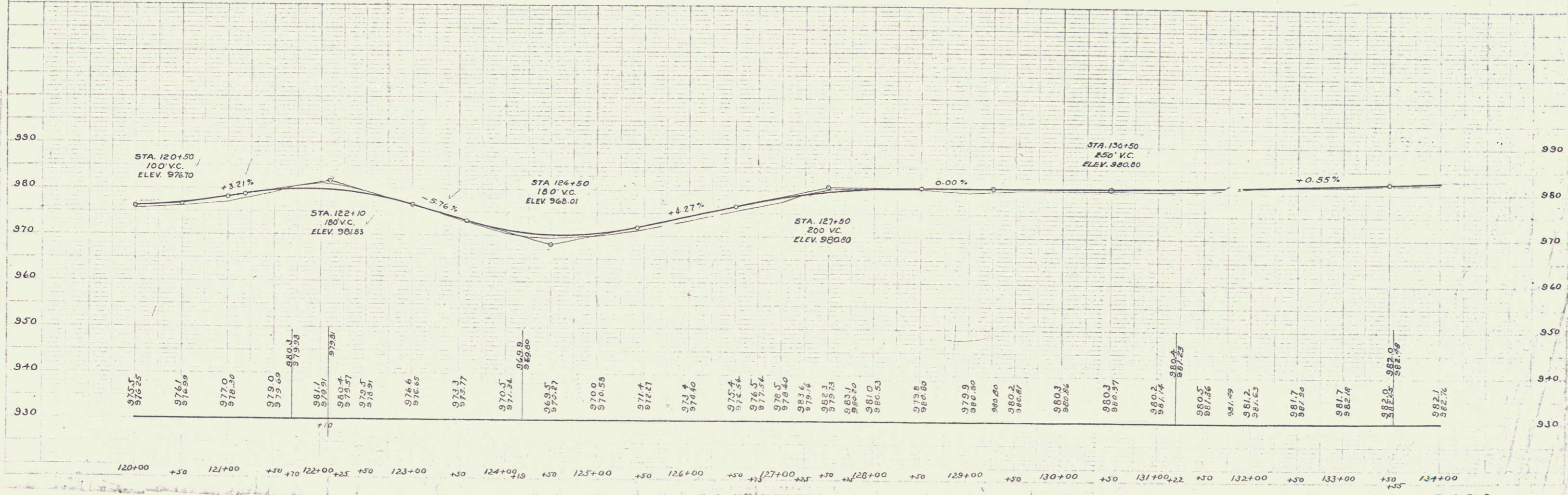
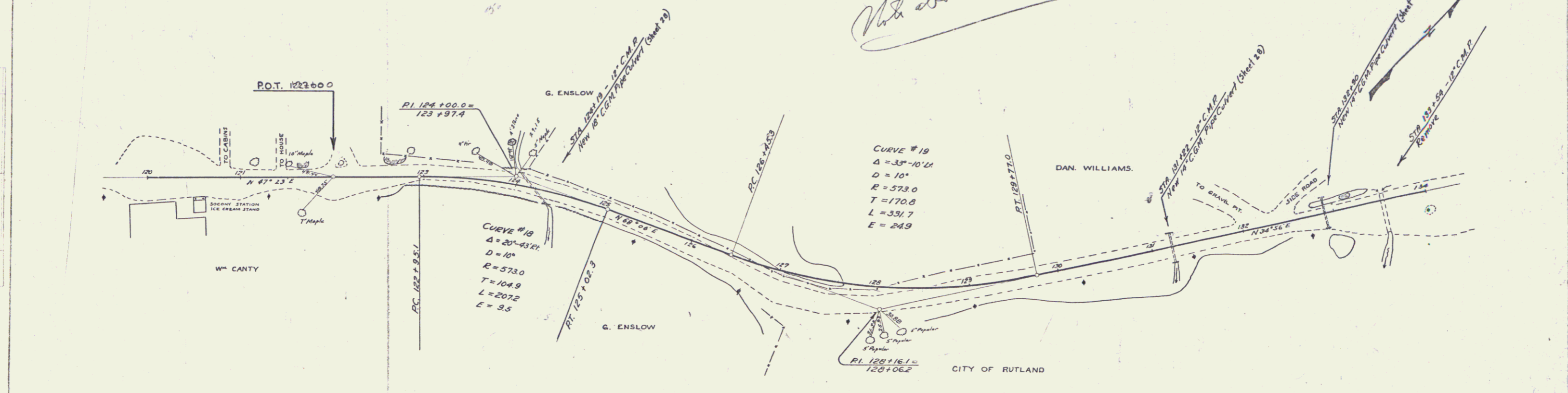
NEW CORRUGATED GALVANIZED METAL PIPE CUVERTS REQUIRED

STATION	DIAM.	LENGTH	CON. A	EMBED. STEEL	CON. VOL. (CUB. YD.)
124+19	18"	44'	---	---	3.3 cy.
131+22	18"	32'	---	---	2.5 "
132+90	18"	34'	---	---	2.5 "

76-B 1930 21 69

Note about Lines + Bound

PLAN
SECTION
PROFILES
DETAILS
CONSTRUCTION
REVISIONS



SERIES E No 76-B
SHEET 21 OF 69

9

WOOD GUARD RAIL REQUIRED

CULVERT STATIONS	LEFT	RIGHT
137+14	24'	24'
144+52	24'	24'
146+15	24'	24'

CANE GUARD RAIL REQUIRED

STA. TO STA.	LEFT	RIGHT
139+50 - 140+70		120'

NEW CORRUGATED GALVANIZED METAL PIPE CULVERTS REQUIRED

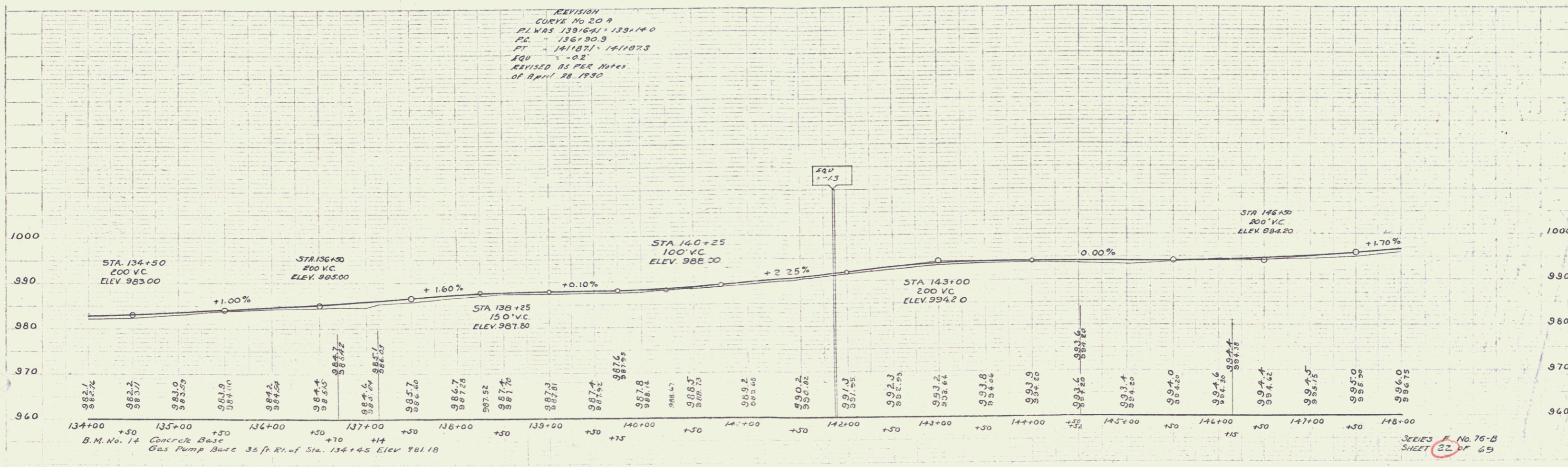
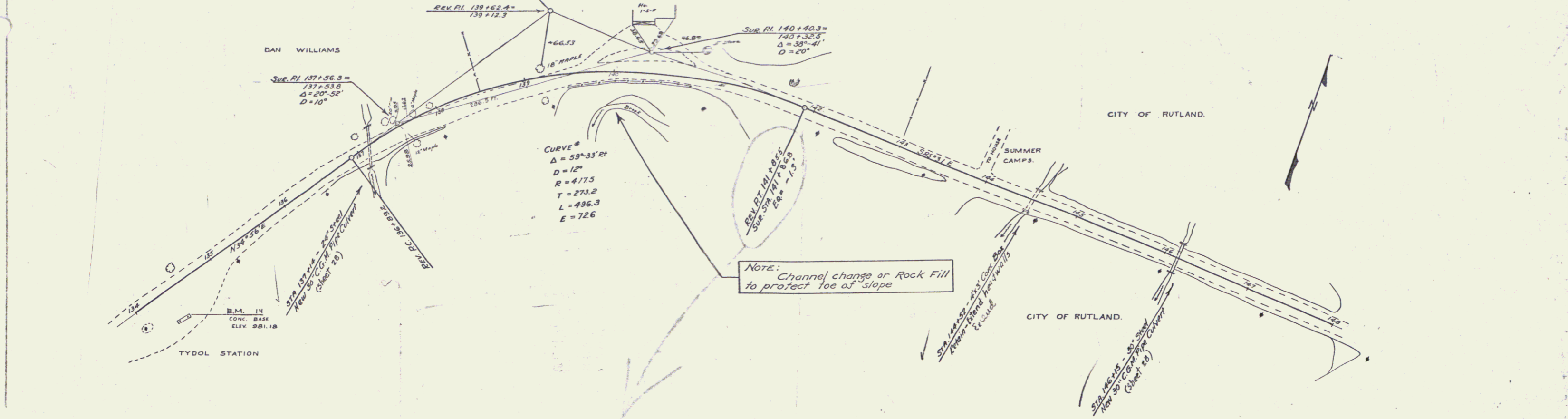
STATION	DIM. LENGTH	CONC. 2	REIN. STEEL	CEN. ELEV. HEADWALL
137+14	30"	44'	12" FIBRE	5.0'
146+15	30"	35'	12" FIBRE	5.0'

L. GENO.

CULVERT REPAIRS REQUIRED

STATION	NATURE OF REPAIRS	CONC. CLASS	REIN. STEEL
144+52	Extending Headwall	0.5 cy	9 lbs.

74-5	1930	22	69
------	------	----	----



REVISION
 CURVE NO 20 A
 P.I. WAS 138+62.4 - 139+14.0
 P.C. = 136+90.3
 P.T. = 141+87.1 - 141+87.3
 EQU = -0.2'
 REVISED AS PER NOTES
 OF APRIL 28, 1930

B.M. No. 14 Concrete Base
 Gas Pump Base 36 ft. R. of Sta. 134+45 Elev 981.18

SERIES F. No. 75-B
 SHEET 22 OF 69

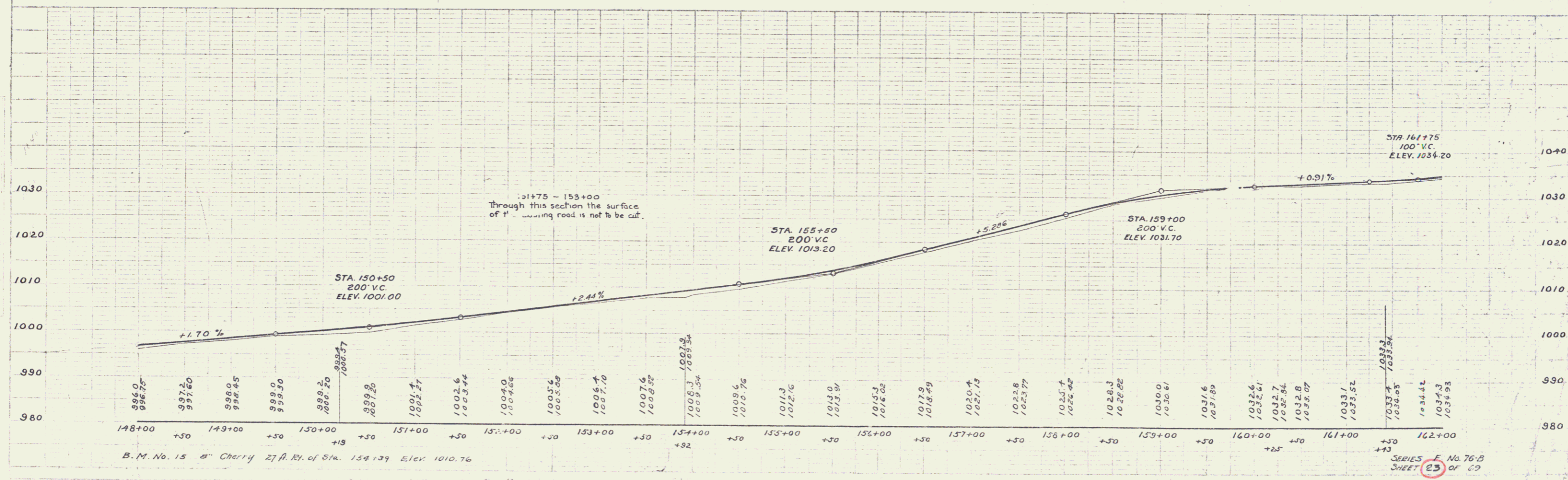
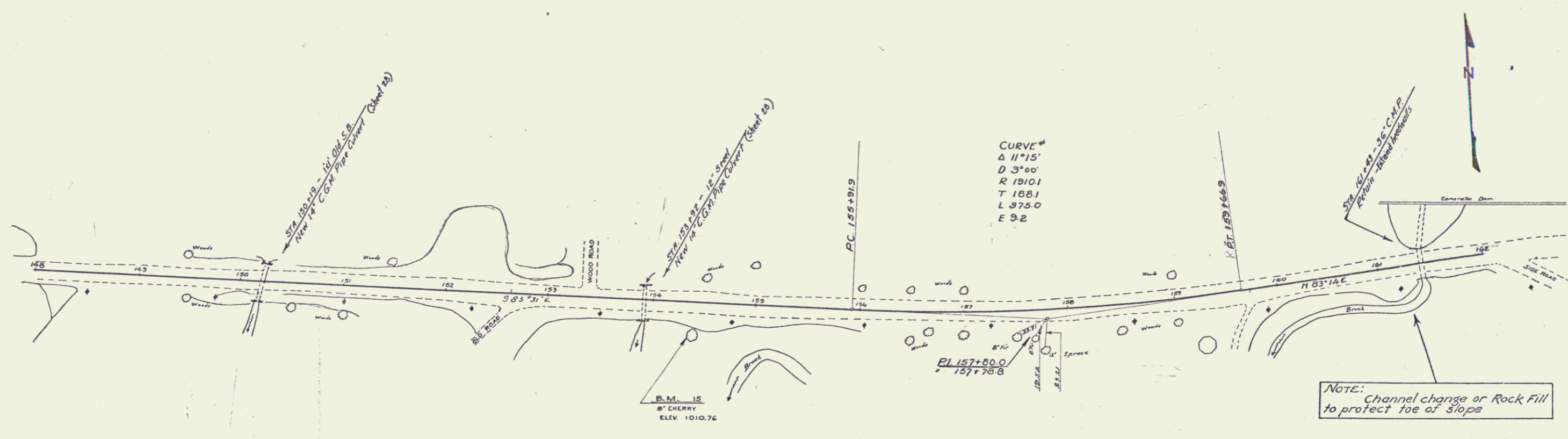
WOOD GUARD RAIL REQUIRED		
CULVERT STATION	LEFT	RIGHT
150+19	24'	24'
153+32	24'	24'
161+43	24'	24'

CABLE GUARD RAIL REQUIRED		
STA TO STA	LEFT	RIGHT
140+10-160+90	-	80
155+26-155+74	-	48

NEW CORRUGATED GALVANIZED METAL PIPE CULVERTS REQUIRED				
STATION	DIAM.	LENGTH	CONC. CLASS	REIN. STEEL
150+19	14"	40'	-	2.5 #3
153+32	14"	36'	-	2.5 #3

CULVERT REPAIRS REQUIRED		
STA.	NATURE OF REPAIRS	CONC. CLASS
161+43	Extending Headwalls	1.0 cy

76-B
 1930
 23
 69

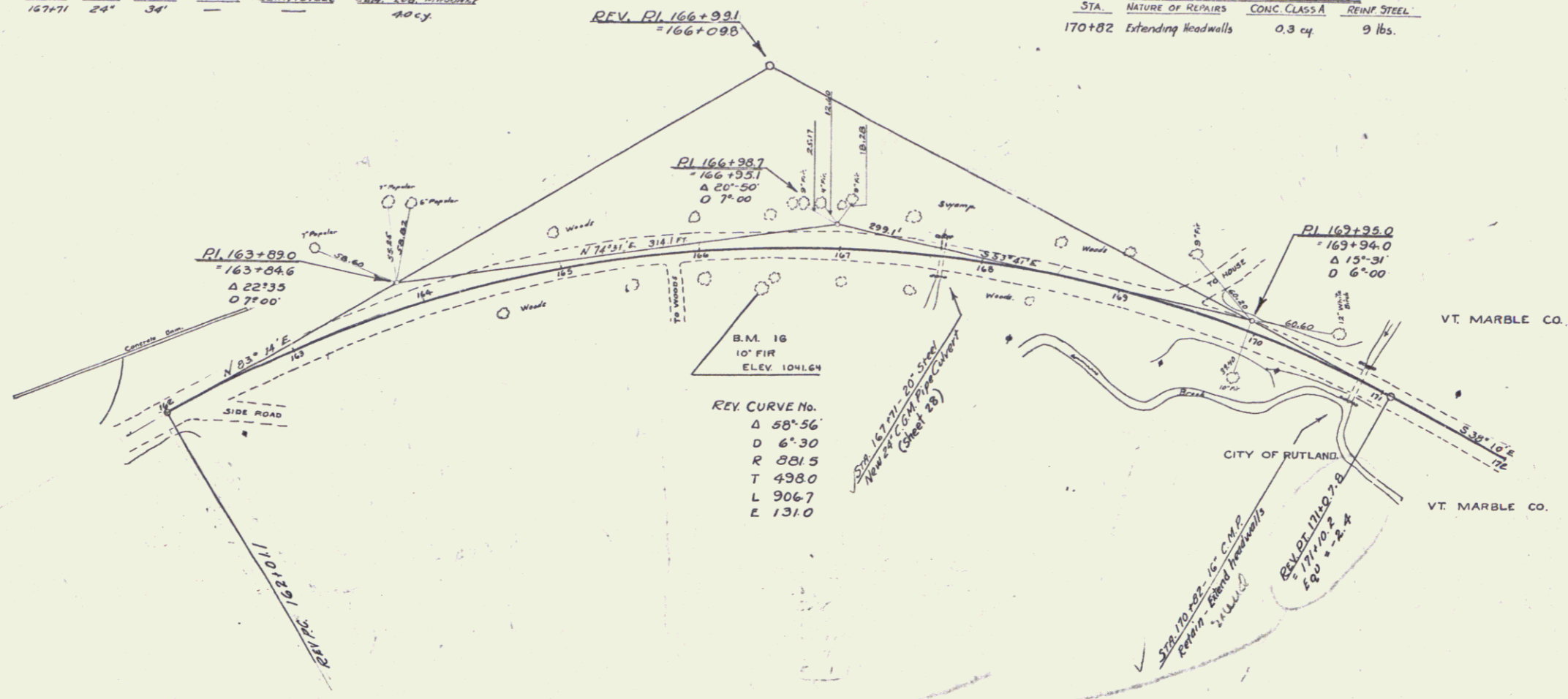


WOOD GUARD RAIL REQUIRED
 CULVERT STATIONS LEFT RIGHT
 167+71 24' 24'
 170+82 24' 24'

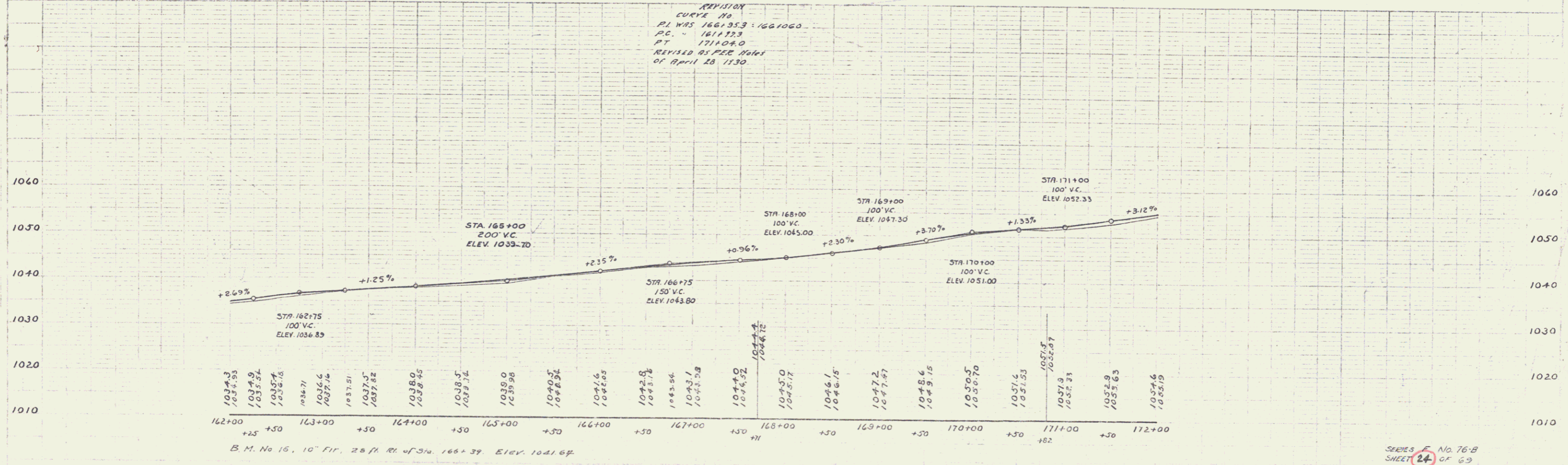
NEW CORRUGATED GALVANIZED METAL PIPE CULVERTS REQUIRED
 STATION QUANT. LENGTH CONC. A REIN. STEEL CONC. CUR. MODIFIED
 167+71 24' 34' — — — — —
 170+82 — — — — — 40 cy.

CULVERT REPAIRS REQUIRED
 STA. NATURE OF REPAIRS CONC. CLASS REIN. STEEL
 170+82 Extending Headwalls 0.3 cy 9 lbs.

76-B 1930. 24 69



REVISION
 CURVE NO.
 PI WAS 166+95.3 : 166+106.0
 P.C. " 161+12.3
 P.T. " 171+04.0
 REVISED AS PER ORDER
 OF APRIL 28 1930.



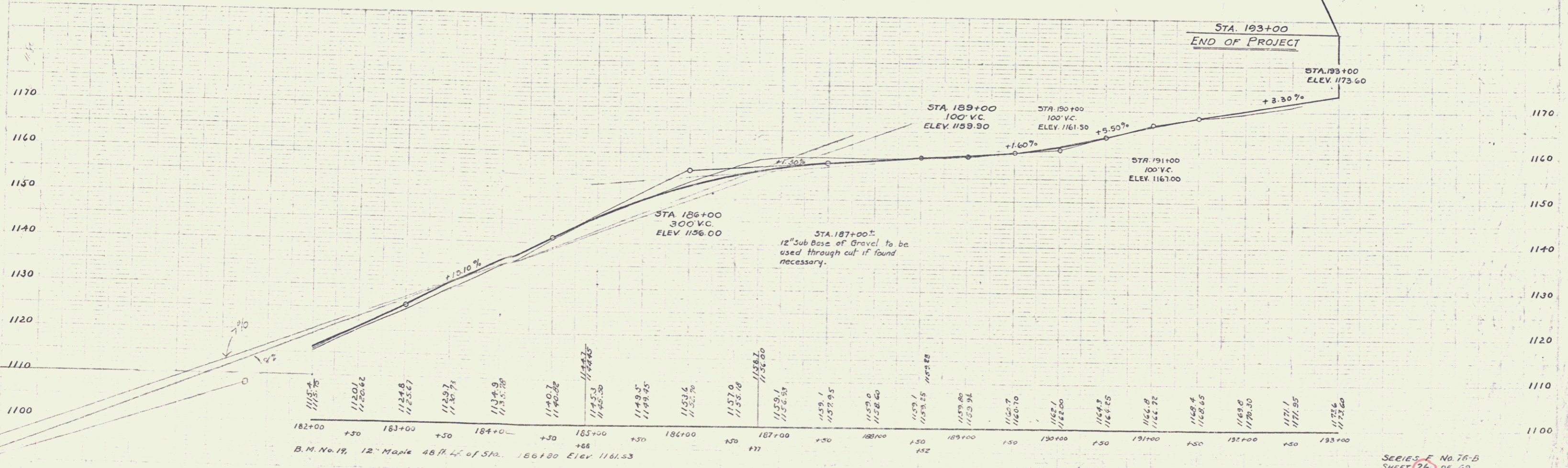
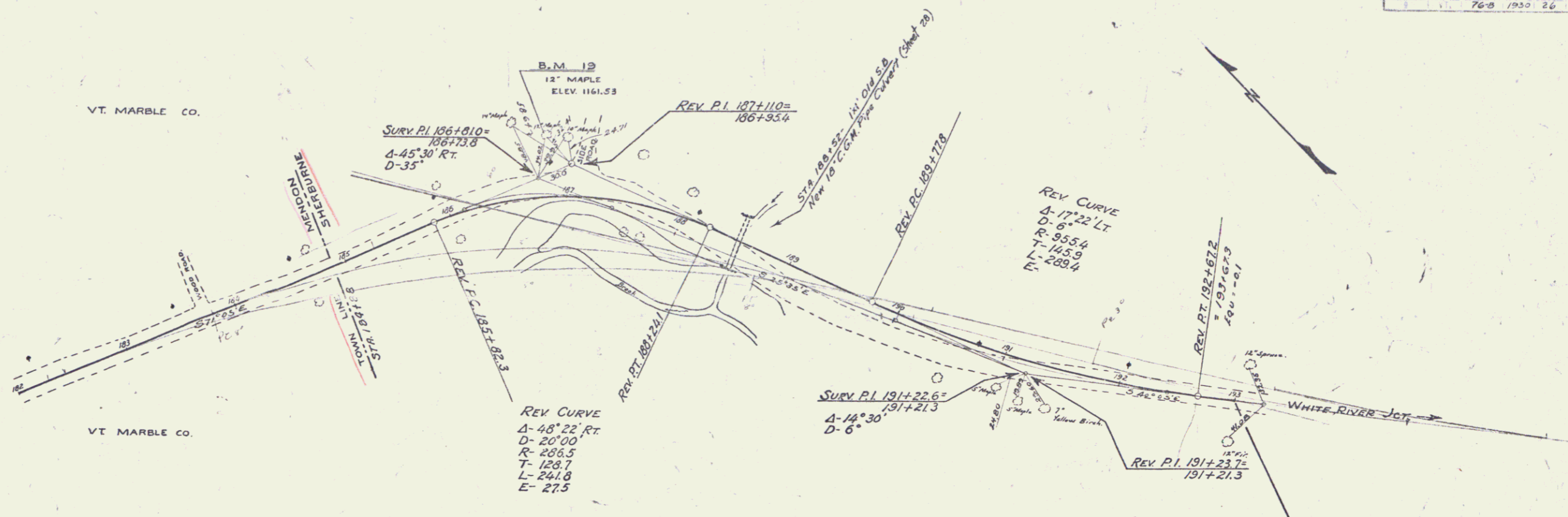
SERIES F. No. 76-B
 SHEET 24 OF 69

WOOD GUARD RAIL REQUIRED
 CULVERT STATIONS LEFT RIGHT
 188+52 24' 24'

CABLE GUARD RAIL REQUIRED
 STA. TO STA. LEFT RIGHT
 186+64-187+60 - 96

NEW CORRUGATED GALVANIZED METAL PIPE CULVERTS REQUIRED
 STATIONS DIMS. LENGTH CONC. RINGS REIN. STEEL CONC. S.S. MANNING
 188+52 18' 42' - - - 3.3 c4.

STATE 76-B 1930 26 69



SERIES F No. 76-B
 SHEET 26 OF 69