

WOOD GUARD RAIL REQUIRED

CULVERT STATION	LEFT	RIGHT
150+19	24'	24'
153+32	24'	24'
161+43	24'	24'

CABLE GUARD RAIL REQUIRED

STA TO STA	LEFT	RIGHT
140+10-160+90	-	80
155+26-155+74	-	48

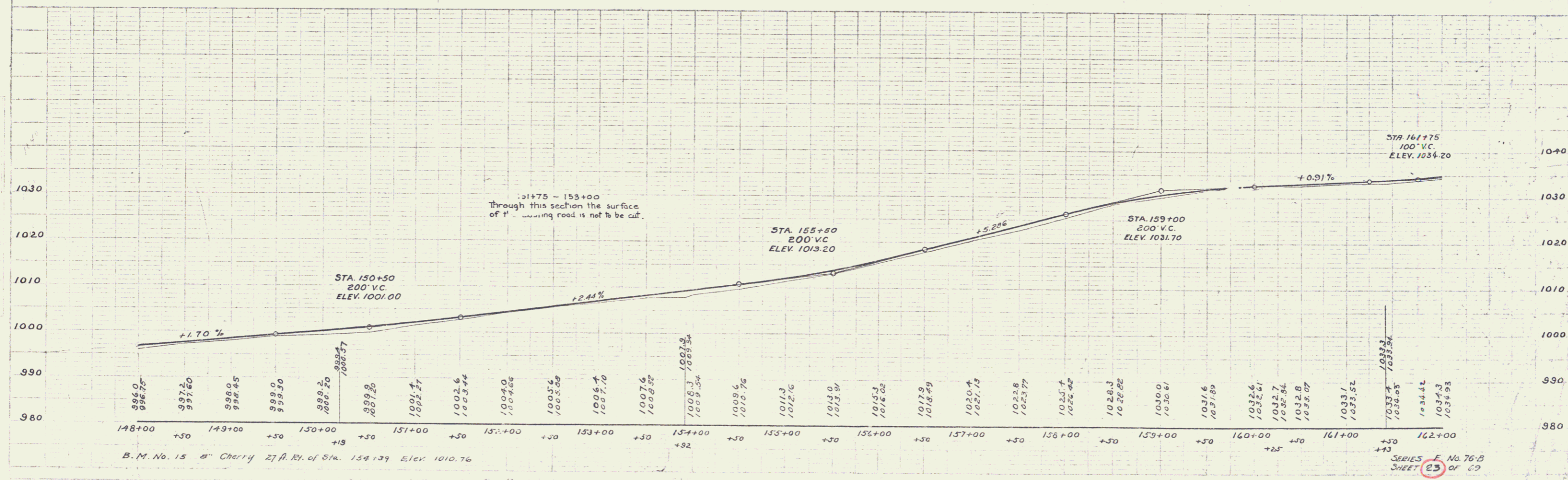
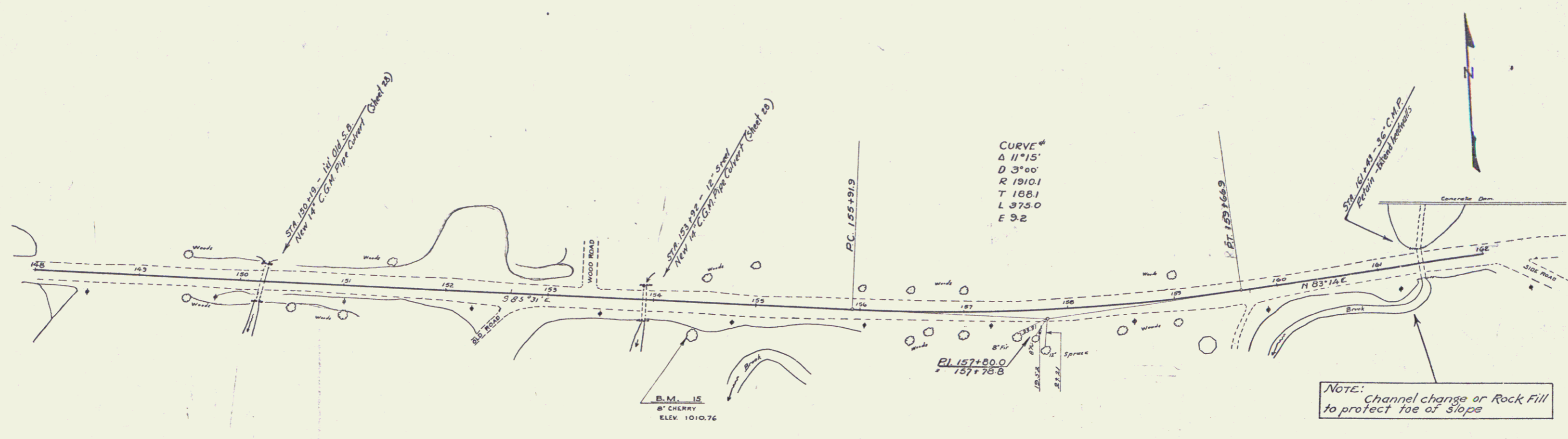
NEW CORRUGATED GALVANIZED METAL PIPE CULVERTS REQUIRED

STATION	DIAM.	LENGTH	CONC. CLASS	REINF. STEEL	CON. FOR MANHOLES
150+19	14"	40'	-	-	2.5 cu
153+32	14"	36'	-	-	2.5 "

CULVERT REPAIRS REQUIRED

STA.	NATURE OF REPAIRS	CONC. CLASS	REINF. STEEL
161+43	Extending Headwalls	1.0 cy	9 lbs.

STATE OF MISSISSIPPI
 DIVISION OF HIGHWAYS
 PROJECT NO. 76-B
 SHEET NO. 23 OF 69



DATE: _____
 DRAWN BY: _____
 CHECKED BY: _____

DATE: _____
 DRAWN BY: _____
 CHECKED BY: _____

B.M. No. 15 8" Cherry 27 ft. R.H. of Sta. 154+39 Elev. 1010.76

SERIES F No. 76-B
 SHEET 23 OF 69