

WOOD GUARD RAIL REQUIRED

CULVERT STATIONS	LEFT	RIGHT
137+14	24'	24'
144+52	24'	24'
146+15	24'	24'

CHAIN GUARD RAIL REQUIRED

STA. TO STA.	LEFT	RIGHT
139+50 - 140+70		120'

NEW CORRUGATED GALVANIZED METAL PIPE CULVERTS REQUIRED

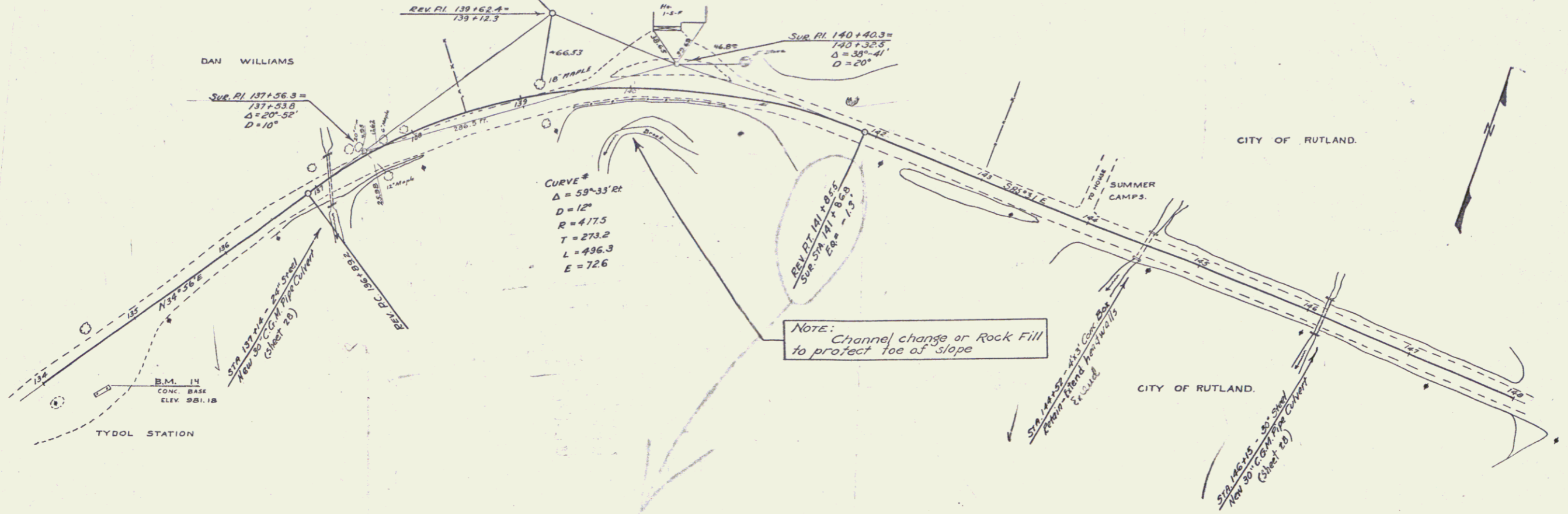
STATION	DIM. LENGTH	CONC. 2	REINF. STEEL	CEN. ELEV. HEADWALL
137+14	30"	44'	12" FRAPLE	5.0'
146+15	30"	35'	12" FRAPLE	5.0'

L. GENO.

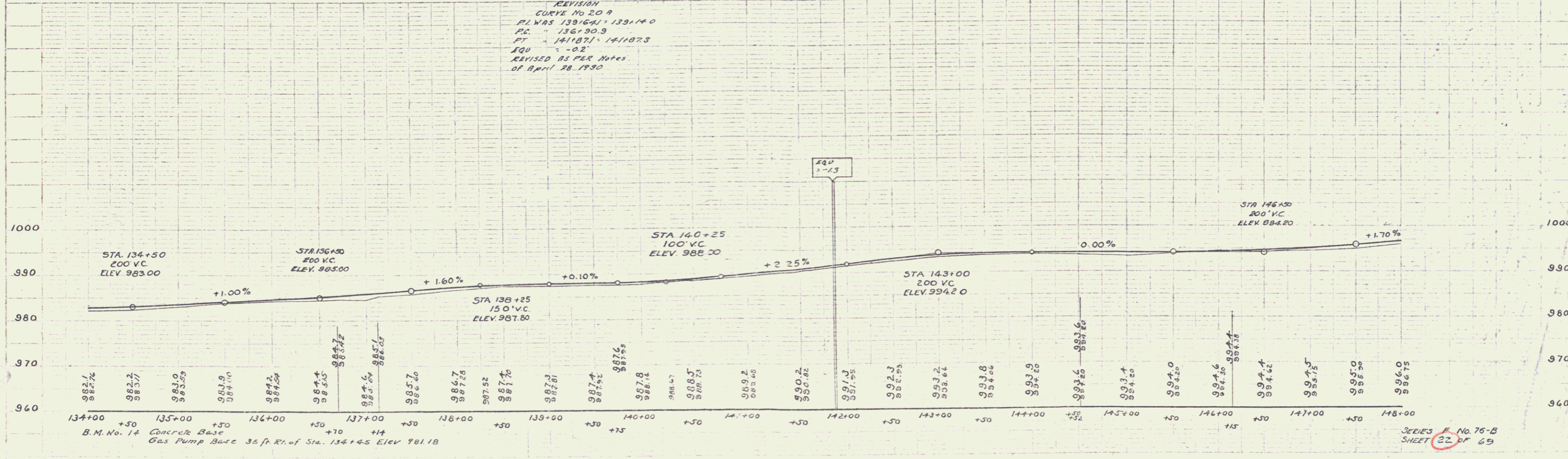
CULVERT REPAIRS REQUIRED

STATION	NATURE OF REPAIRS	CONC. CLASS.	REINF. STEEL
144+52	Extending Headwall	0.5 cy	9 lbs.

74-5	1930	22	69
------	------	----	----



REVISION
 CURVE NO 20 A
 P.I. WAS 138+69.1 - 139+14.0
 P.C. = 136+90.3
 P.T. = 141+87.1 - 141+87.3
 EQU = -0.2'
 REVISED AS PER NOTES
 OF APRIL 28 1930



SERIES F No. 75-B
 SHEET 22 OF 69

10