

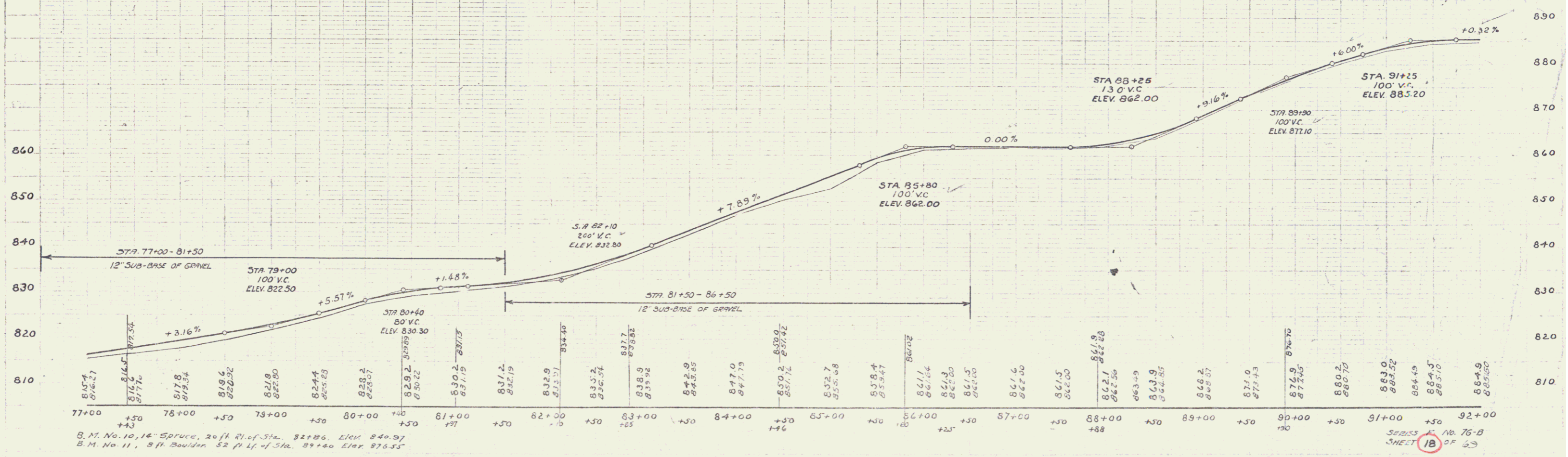
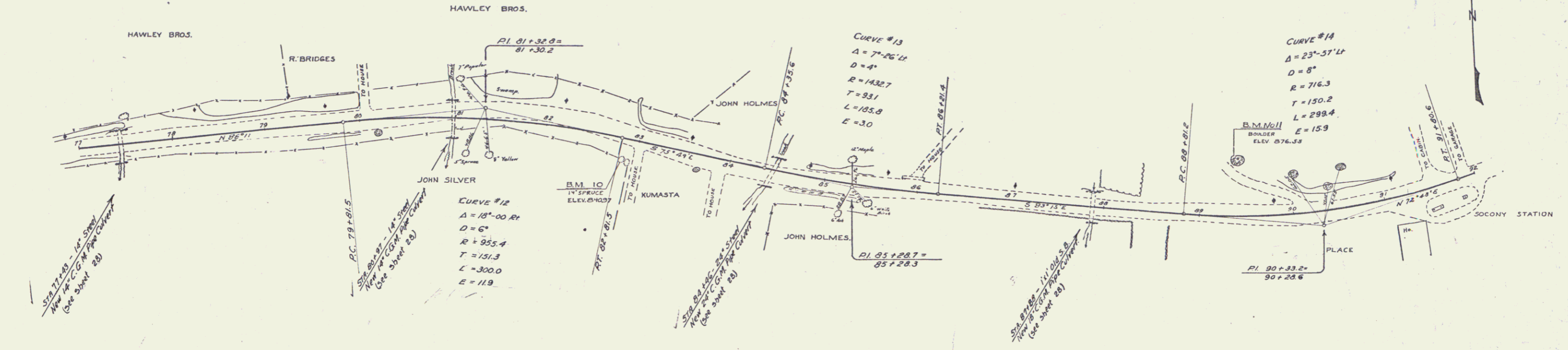
**WOOD QUASI RAIL REQUIRED**

CULVERT STATIONS	LEFT RISE
77+00-83	24' 24"
80+37	24' 24"
86+46	24' 24"
87+00	24' 24"

**NEW CORRUGATED GALVANIZED METAL PIPE CULVERTS REQUIRED**

STATIONS	DIAM.	LENGTH	CROSS	KEY STAGE	CEN. PIV. MARKER
77+00-83	18"	36'	-	-	2.5 c.y.
80+37	18"	40'	-	-	3.3
86+46	24"	36'	-	-	4.0
87+00	18"	32'	-	-	3.3

Scale  
 76-B 1950 10 69



B.M. No. 10, 16" Spruce, 20 ft. R. of Sta. 82+86, Elev. 840.97  
 B.M. No. 11, 8 ft. Boulder, 52 ft. L. of Sta. 87+00, Elev. 876.53

SHEET 18 OF 23