

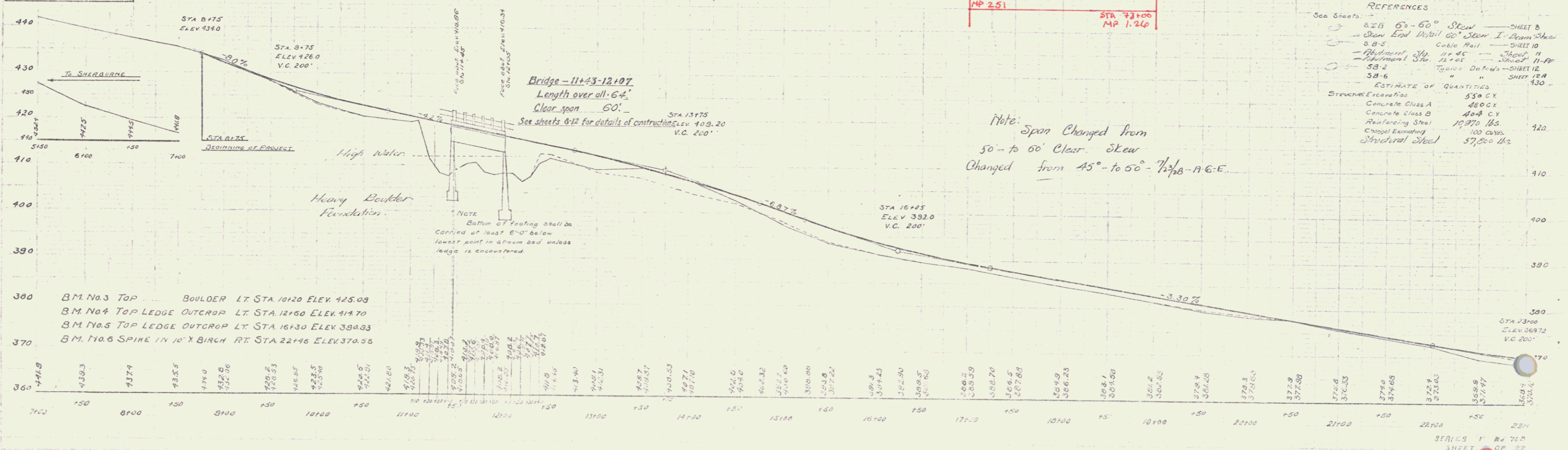
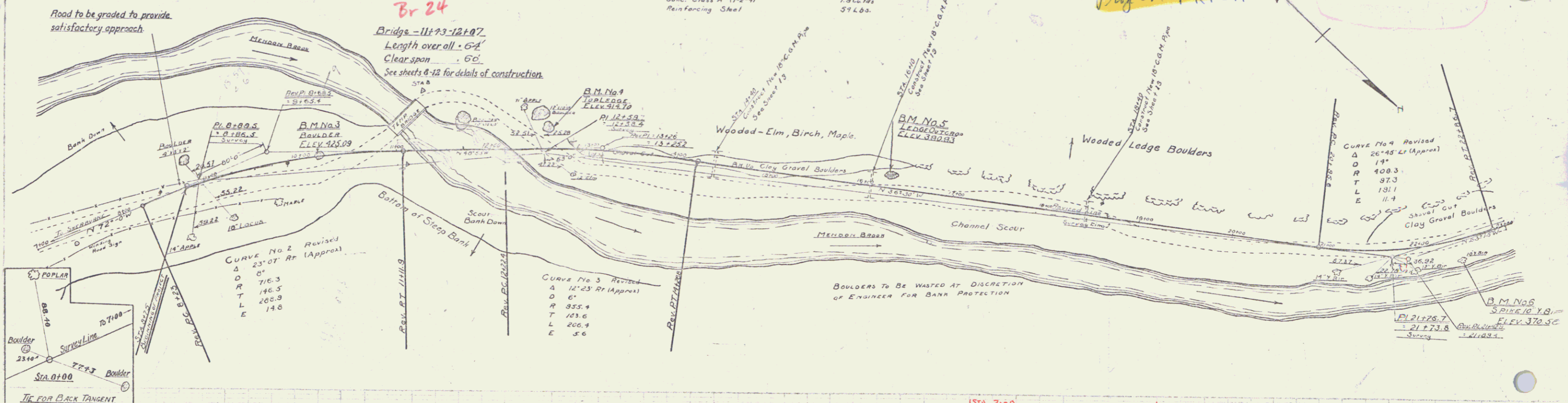
CABLE GUARD RAIL REQUIRED
 ON LEFT Length 240 Lin Ft
 STA 10+00 - 10+70
 ON RIGHT Length 189 Lin Ft
 STA 11+00 - 13+00
 STA 21+24 - 23+00

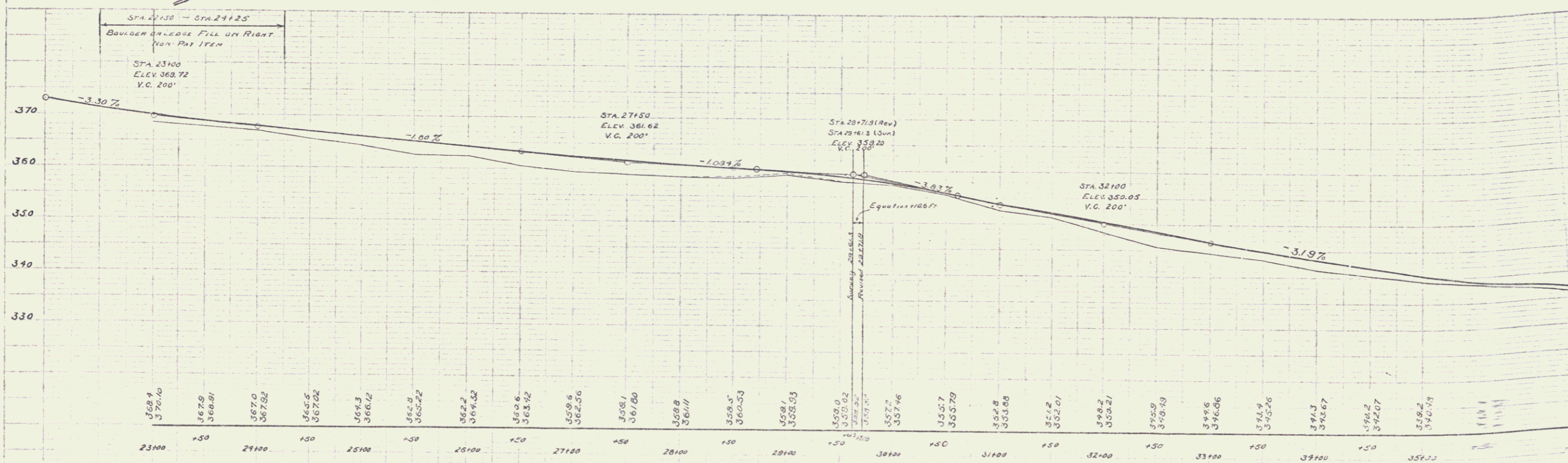
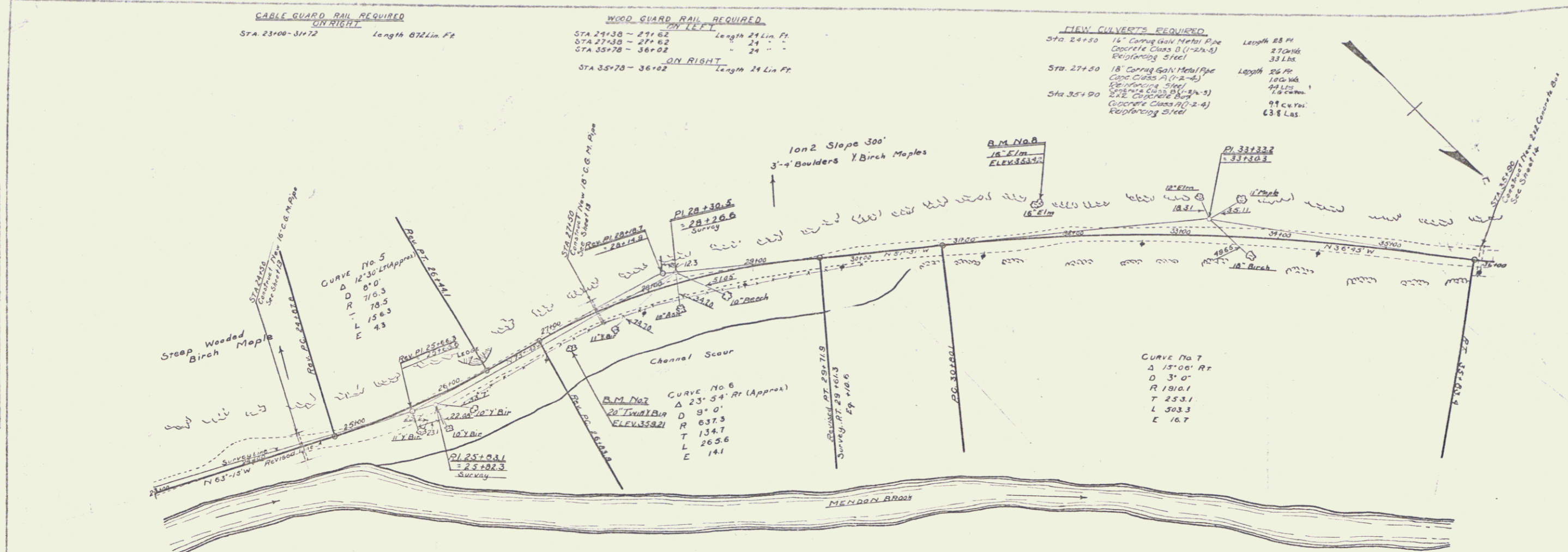
WOOD GUARD RAIL REQUIRED
 ON LEFT Length 24 Lin Ft
 STA 14+28 - 14+52
 STA 15+00 - 16+12
 STA 18+20 - 18+32
 ON RIGHT Length 29 Lin Ft
 STA 14+20 - 14+32
 STA 15+24 - 16+12
 STA 18+28 - 18+32

NEW CULVERTS REQUIRED
 Sta. 14+40 18" Corrug. Galv. Metal Pipe Length 28 Ft
 Conc. Class A (1-2-4) 1.9 Cu Yds
 Reinforcing Steel 59 Lbs
 Sta. 16+10 18" Corrug. Galv. Metal Pipe Length 26 Ft
 Conc. Class A (1-2-4) 1.9 Cu Yds
 Reinforcing Steel 59 Lbs
 Sta. 18+40 18" Corrug. Galv. Metal Pipe Length 32 Ft
 Conc. Class A (1-2-4) 1.9 Cu Yds
 Reinforcing Steel 59 Lbs

Pin # 99R172
 Town Menken
 Route USY
 Proj of FRP5A

STATE OF MISSISSIPPI
 DEPARTMENT OF HIGHWAYS
 PROJECT NO. 760-1928
 SHEET NO. 8





B.M. No. 7 SPIKE IN 20" TWIN Y BIRCH RT STA 27+00 ELEV. 359.21
 B.M. No. 8 SPIKE IN 16" ELM LT STA 31+68 ELEV. 353.92

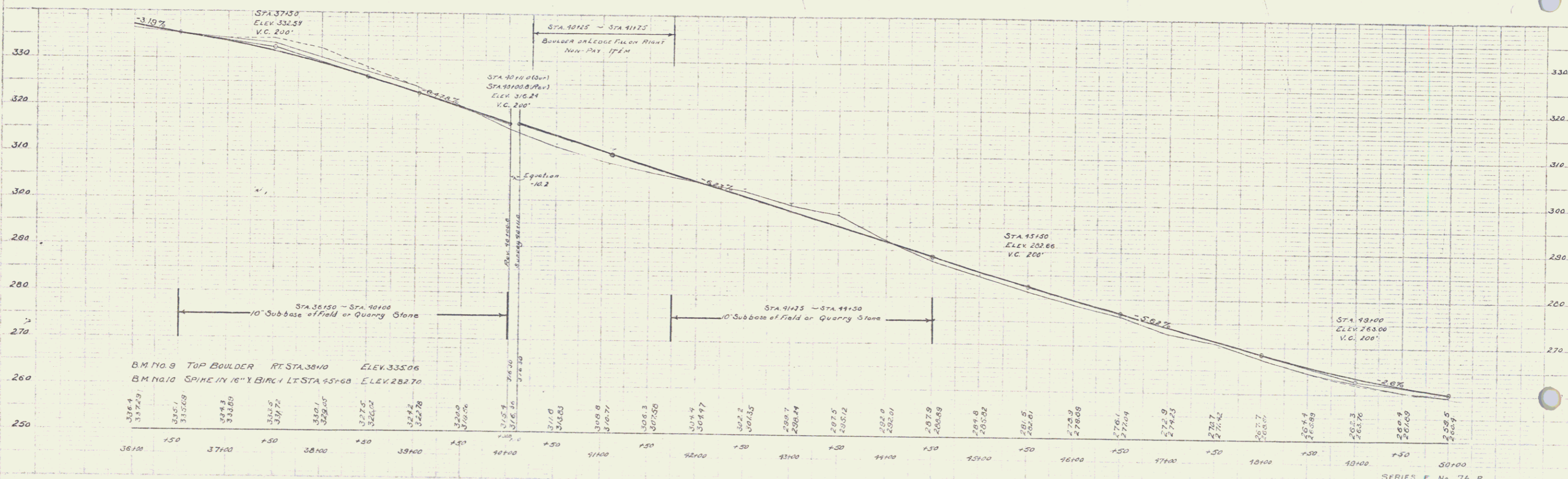
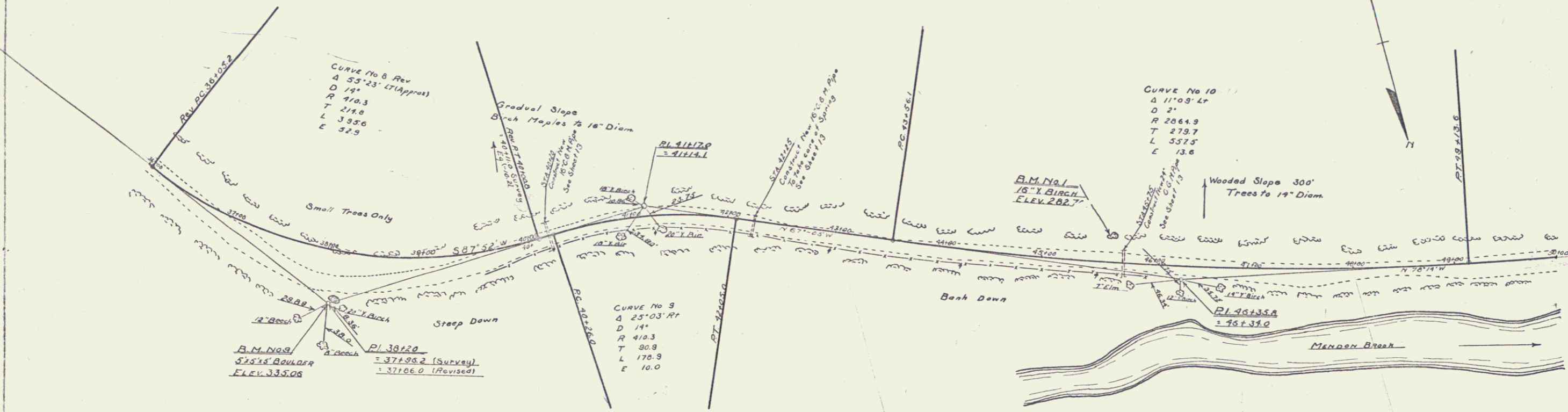
CABLE GUARD RAIL REQUIRED
 STRAIGHT
 STA 40+00 - 46+00 Length 582 Lin Ft

WOOD GUARD RAIL REQUIRED
 CURVE
 STA 40+00 - 40+32 Length 32 Lin Ft
 STA 42+13 - 42+37 Length 24 Lin Ft
 STA 45+63 - 45+87 Length 24 Lin Ft

NEW CULVERTS REQUIRED

Sta 40+20	16" Corrug Galv Metal Pipe	Length 20 Ft
	Conc Class B (1'-2 1/2" - 5)	27 Cu Yds
	Reinforcing Steel	33 Lbs
Sta 42+25	16" Corrug Galv Metal Pipe	Length 30 Ft
	Conc Class B (1'-2 1/2" - 5)	27 Cu Yds
	Reinforcing Steel	33 Lbs
Sta 45+75	24" Corrug Galv Metal Pipe	Length 26 Ft
	Conc Class A (1'-2 - 9)	26 Cu Yds
	Reinforcing Steel	84 Lbs

VT. 76B 1928
 10 12



SERIES F No. 76 B
 SHEET 10 OF 12

3

CABLE GUARD RAIL REQUIRED
ON RIGHT
STA 62+24 - 64+00 Length 176 Lin. Ft.

WOOD GUARD RAIL REQUIRED
ON LEFT

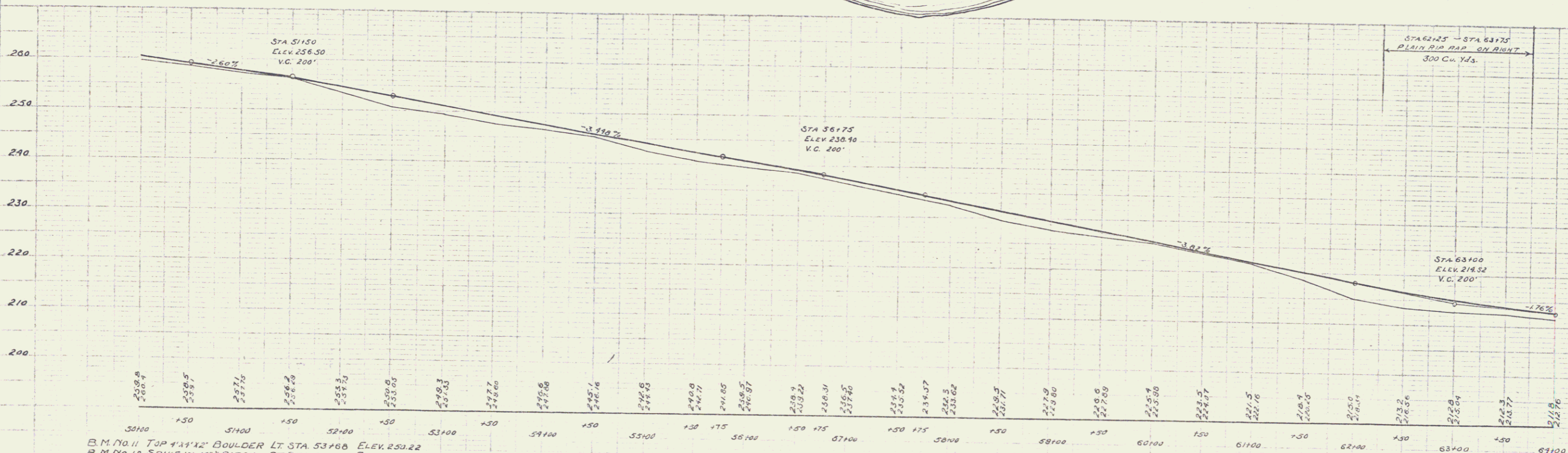
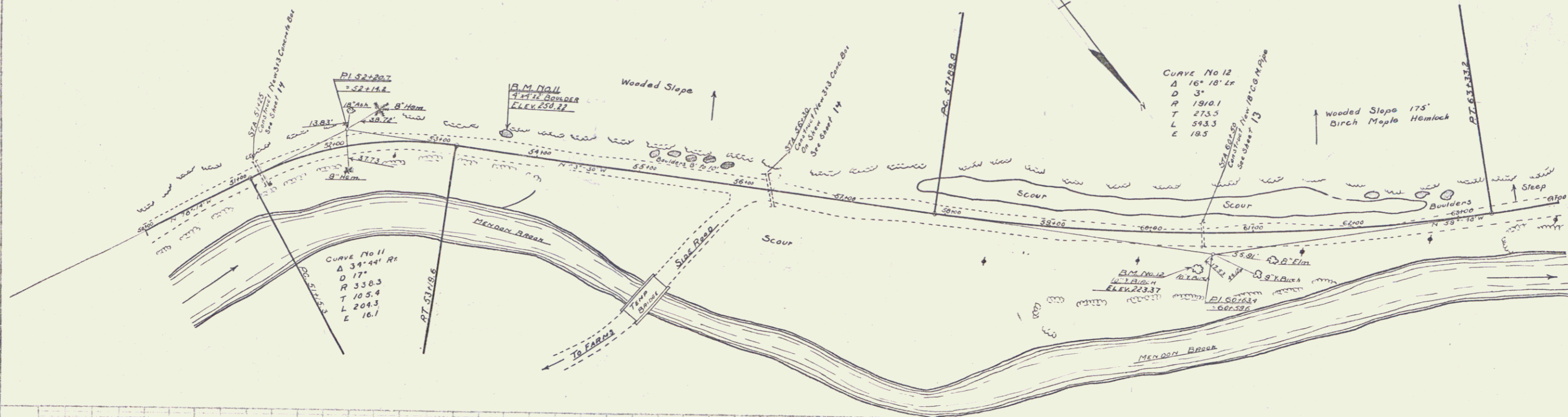
NEW CULVERTS REQUIRED

STA 51+3 - 51+37 ON RIGHT Length 34 Lin. Ft.
STA 56+10 - 56+42 ON RIGHT Length 32 Lin. Ft.
STA 60+30 - 60+62 ON RIGHT Length 32 Lin. Ft.

Sta 51+25
Sta 56+30
Sta 60+50

343 Concrete Box
Concrete Class A (12-4)
Reinforcing Steel
338 Cu. Yds
859 Lbs.
343 Concrete Box
Concrete Class A (12-4)
Reinforcing Steel
15 Cu. Yds
869 Lbs.
18" Corrug. Galv. Metal Pipe Length 20 P.P.
Concrete Class A (12-4)
Reinforcing Steel
19 Cu. Yds
976 Lbs.

STATE OF MICHIGAN
DIST. NO. 76B 1928
17-12



B.M. No. 11 TOP 4'x4' BOULDER LT. STA. 53+66 ELEV. 259.22
B.M. No. 12 SPIKE IN 10" BIRCH RT. STA. 60+46 ELEV. 223.37

SERIES F No 76B
SHEET 11 OF 87
11-12

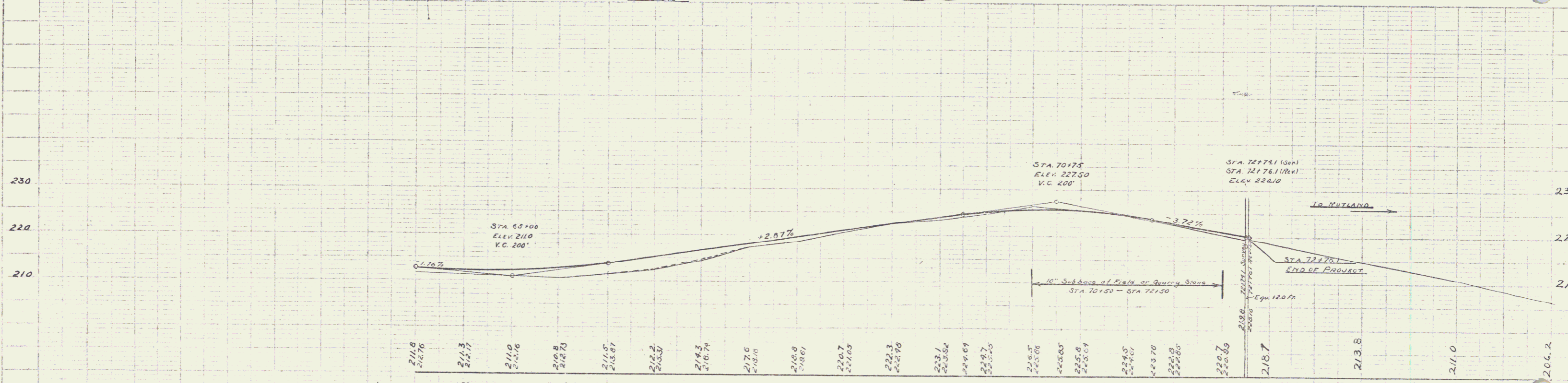
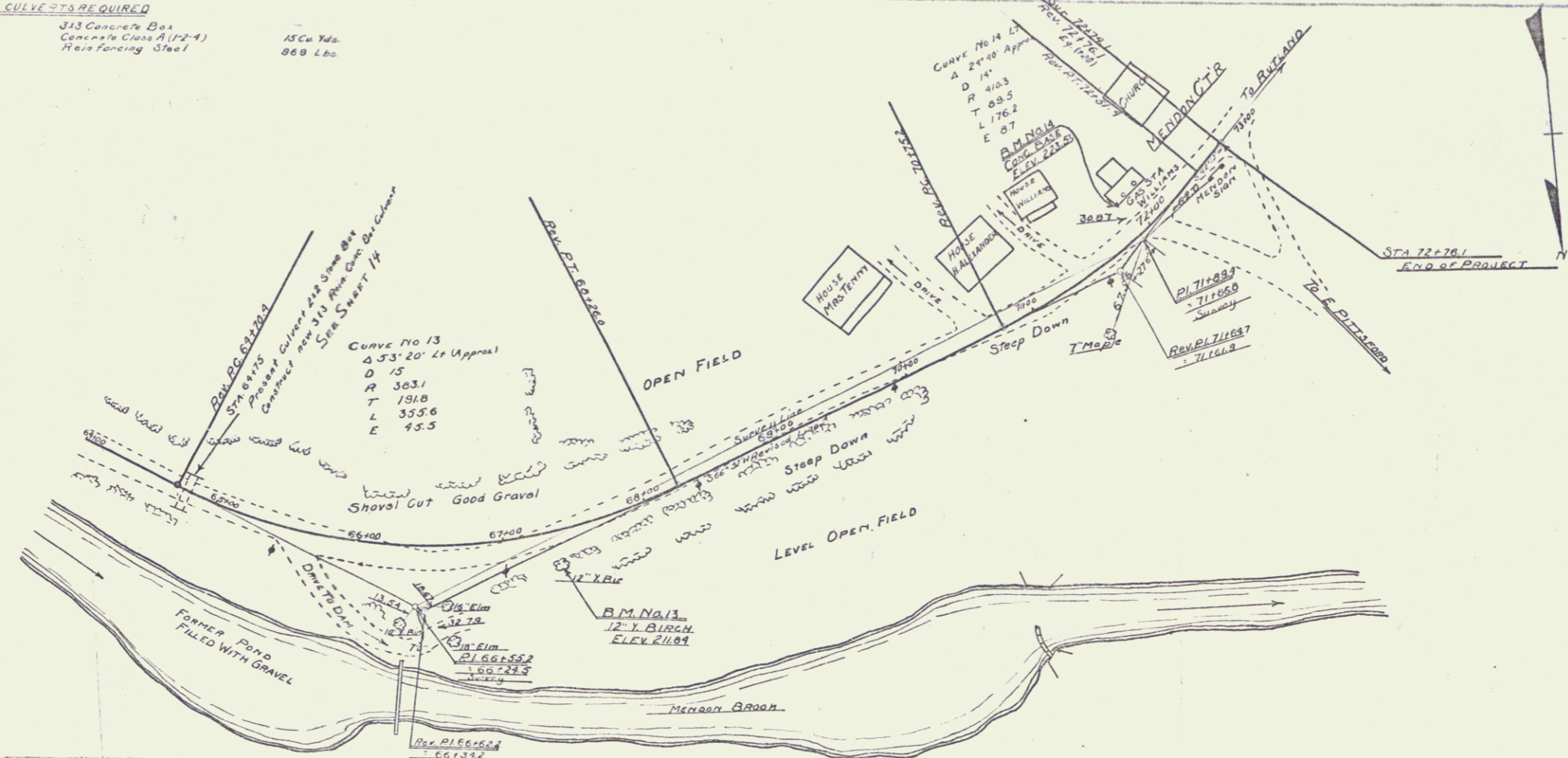
4

CABLE GUARD RAIL REQUIRED
 ON RIGHT
 STA 69+00 - 70+69 Length 669 Lin Ft

NEW CURVES REQUIRED
 Sta 69+75
 313 Concrete Box
 Concrete Class A (F24)
 Reinforcing Steel
 15 Cu Yds
 869 Lbs

WOOD GUARD RAIL REQUIRED
 ON LEFT
 STA 69+63 - 69+87 Length 24 Lin Ft

FED ROAD STATE PROJ NO. YEAR
 76.8 1976 12 12



B.M. NO. 13 SPIKE IN 12" BIRCH RT. STA. 67+93 ELEV 211.81
 B.M. NO. 14 N.E. CORNER CONC. BASE LT. STA. 71+95 ELEV 223.53

SERIES P. M. 78B
 Sheet 12 of 22
 12 12