

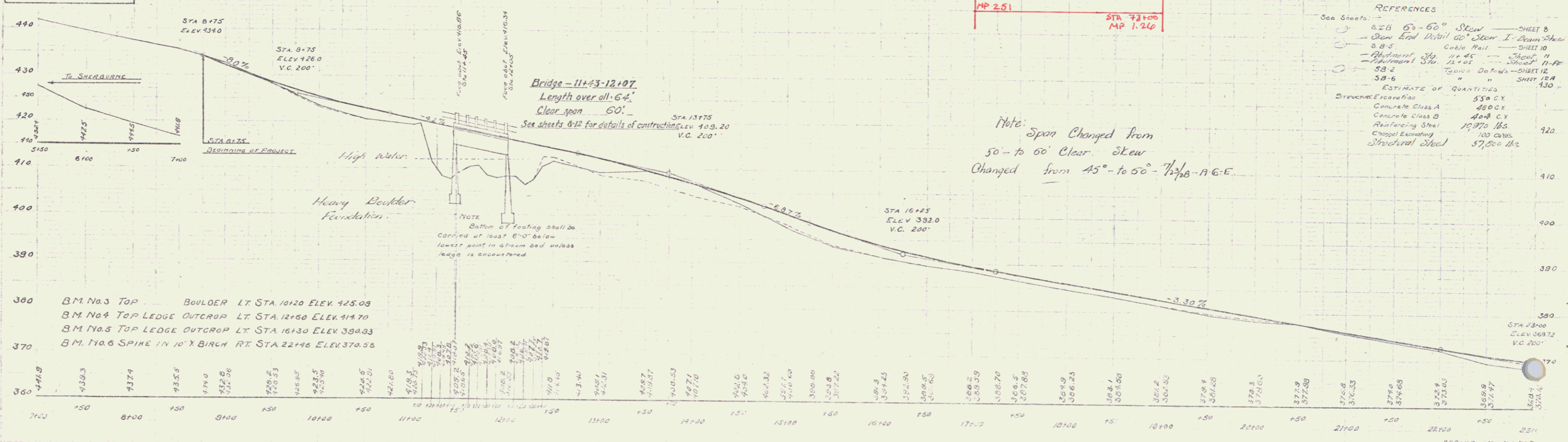
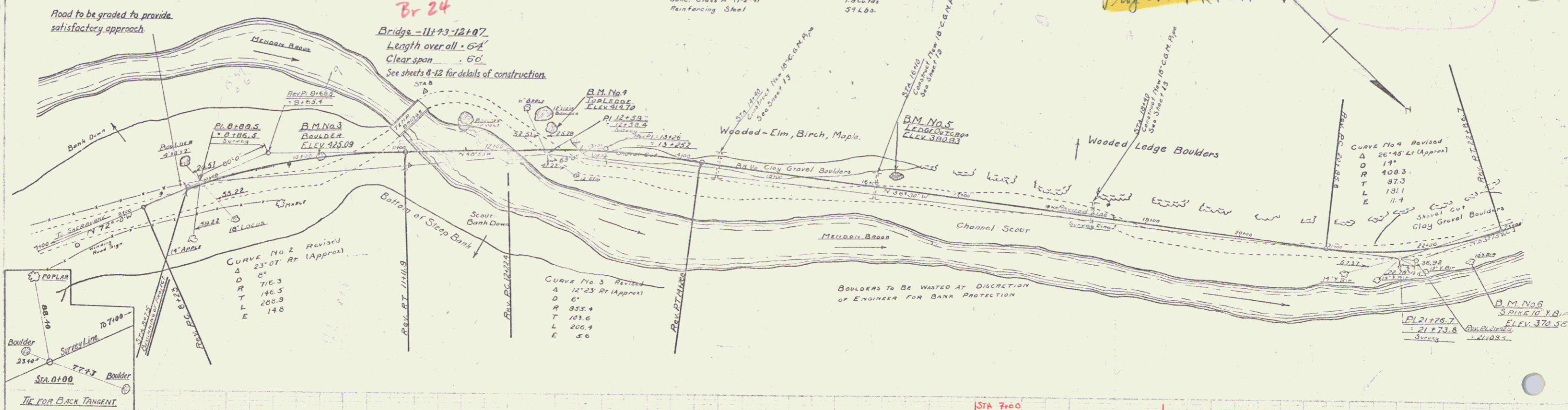
CABLE GUARD RAIL REQUIRED
 ON LEFT Length 240 Lin Ft
 STA 10+00 - 10+70
 ON RIGHT Length 189 Lin Ft
 STA 11+00 - 13+00
 STA 21+24 - 23+00

WOOD GUARD RAIL REQUIRED
 ON LEFT Length 24 Lin Ft
 STA 14+28 - 14+52
 STA 15+00 - 16+12
 STA 18+20 - 18+32
 ON RIGHT Length 29 Lin Ft
 STA 14+20 - 14+32
 STA 15+24 - 16+12
 STA 18+28 - 18+32

NEW CULVERTS REQUIRED
 Sta. 14+40 18" Corrug. Galv. Metal Pipe Length 28 Ft
 Conc. Class A (1-2-4) 1.9 Cu Yds
 Reinforcing Steel 59 Lbs
 Sta. 16+10 18" Corrug. Galv. Metal Pipe Length 26 Ft
 Conc. Class A (1-2-4) 1.9 Cu Yds
 Reinforcing Steel 59 Lbs
 Sta. 18+40 18" Corrug. Galv. Metal Pipe Length 32 Ft
 Conc. Class A (1-2-4) 1.9 Cu Yds
 Reinforcing Steel 59 Lbs

Pin # 99R172
 Town Menken
 Route USY
 Proj of FRP5A

STATE OF MISSISSIPPI
 DEPARTMENT OF HIGHWAYS
 PROJECT NO. 760-1928
 SHEET NO. 8



REFERENCES

See Sheets: SB-5 60-60 Skew SHEET 8
 SB-5 Draw End Detail 60' Skew I-Beam Shear SHEET 10
 SB-5 Cable Rail SHEET 10
 SB-5 Reinforcement 11' x 45' SHEET 11
 SB-5 Equipment Sta. 23+05 SHEET 11-FR
 SB-5 Traffic Details SHEET 12
 SB-6 " " SHEET 12A
 SB-6 " " SHEET 12B

ESTIMATE OF QUANTITIES

Structure Excavation	539 CY
Concrete Class A	480 CY
Concrete Class B	404 CY
Reinforcing Steel	19,970 LBS
Channel Excavation	100 CUB. YDS
Structural Steel	57,200 LBS

Note: Span Changed from 50- to 60' Clear. Skew Changed from 45° to 50° 7/16-A.G.E.

05/25/28

SERIES F No. 760
 SHEET OF 37
 8