

INDEX OF SHEETS

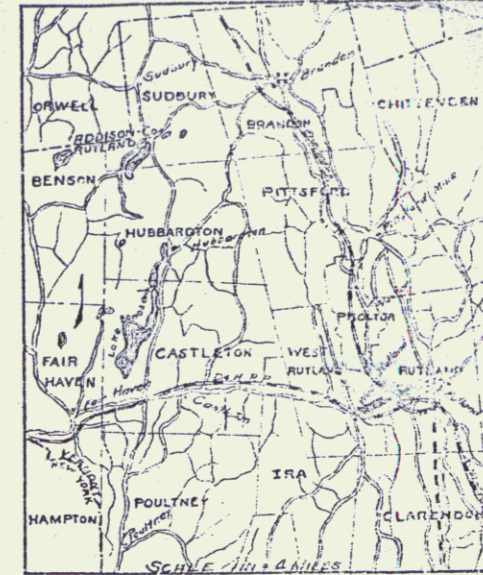
SHEET NO.	TITLE PAGE
No. 1	TYPICAL CROSS-SECTION OF IMPROVEMENT 3:1 AND 5:1
No. 2	PLAN AND PROFILE STA. 0+00 TO STA 13+00
" 3	" " " 13+00 " 28+00
" 4	" " " 28+00 " 43+00
" 5	" " " 43+00 " 58+00
" 6	" " " 58+00 " 73+00
" 7	" " " 73+00 " 88+00
" 8	" " " 88+00 " 99+13.7
" 11	ABUTMENT PLAN
" 12	SUPERSTRUCTURE
" 13 TO 23	CROSS SECTIONS

STATE OF VERMONT  
STATE HIGHWAY DEPARTMENT

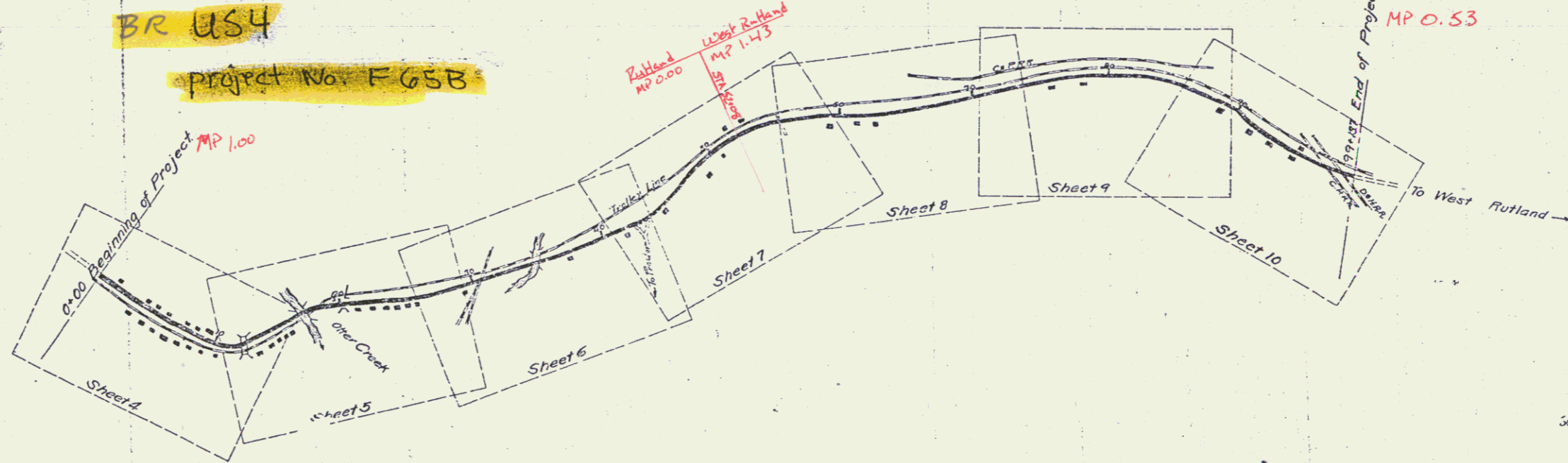
PLAN AND PROFILE OF PROPOSED  
STATE HIGHWAY  
FEDERAL AID PROJECT

TOWN OF RUTLAND AND WEST RUTLAND  
GATEWAY ROAD  
FROM RUTLAND CITY LINE TO END OF PAVEMENT  
IN WEST RUTLAND.

SCALES  
PLAN - 1 IN. = 50 FT.  
PROFILE - HORIZONTAL 1 IN. = 50 FT. VERT. 1 IN. = 10 FT.  
CROSS SECTIONS - 1 IN. = 5 FT.

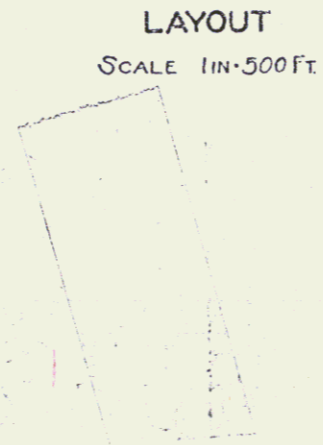


TO BE RETURNED TO B.O.P. DIVISION  
TOWN OF  
RUTLAND  
Vermont  
FILE NO. 111  
HIGHWAY AWA-PC-ENG 11



CONVENTIONAL SIGNS

COUNTY LINE	GROUND ELEVATION	
TOWN LINE	GRADE ELEVATION	
FENCE LINE		
STONE WALL		
UNFENCED PROPERTY		
RAILROAD		
RETAINING WALL		
CENTER LINE		
SURVEY LINE		
CULVERT		
DROP INLET		
TROLLEY POLE		
POWER POLE		
TELEPHONE POLE		
TREES		
FENCE		



SUBMITTED BY ORDER OF THE STATE HIGHWAY DEPARTMENT

8/1/23  
RECOMMENDED FOR APPROVAL  
DISTRICT ENGINEER  
BUREAU OF PUBLIC ROADS  
APPROVED  
DIRECTOR - BUREAU OF PUBLIC ROADS

SERIES # No. 6528 FILED  
SHEET 1 OF 23

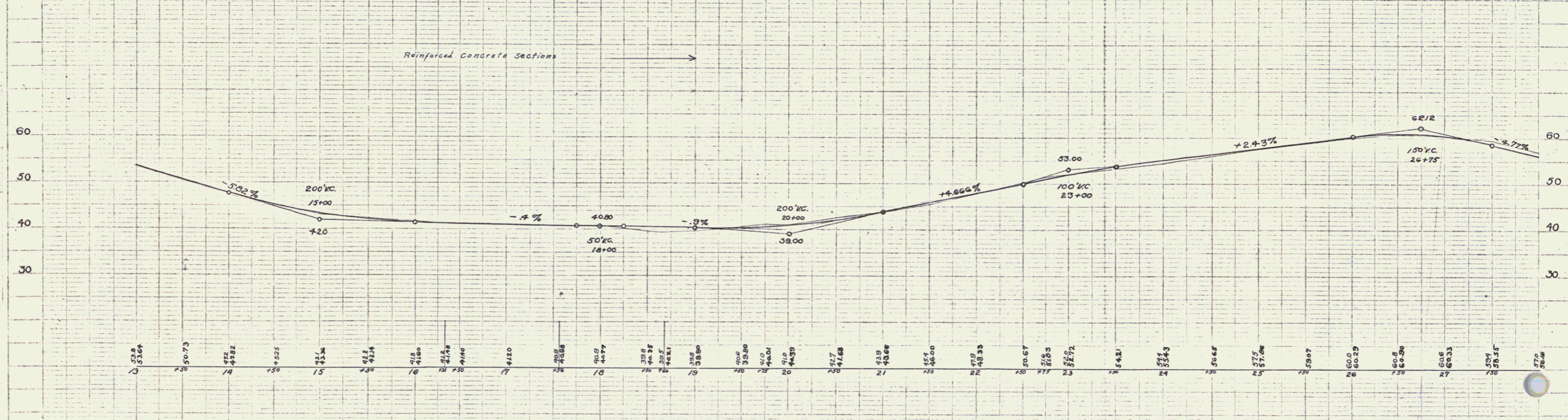
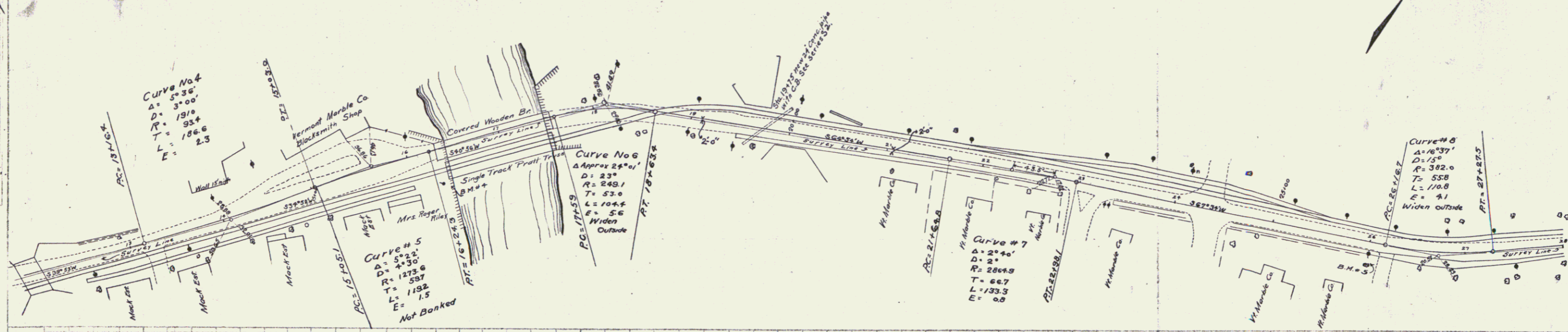
US 4



NEW CULVERTS REQUIRED  
 Sta 19+75 24" Conc. Pipe 45ft  
 1-2 5" Conc. 3.5 Cyls.  
 1 Grate 2'-6" x 2'-6"

GUARD RAIL REQUIRED  
 On Left  
 Sta 16+15 to Sta 16+31 Length 16ft  
 " 17+56 " " 18+44 " 88 "  
 On Right  
 Sta 16+15 to Sta 18+31 Length 16ft  
 " 17+56 " " 17+72 " 16 "  
 Total this sheet 136 ft

DATE: 11/11/23  
 DRAWN BY: [Signature]  
 CHECKED BY: [Signature]



B.M. A N.E. corner of Easterly Trolley Abutment Right of Sta. 16+36 Elev. 40.07  
 B.M. S Spike in 20" Twin Elm Right of Sta. 26+00 Elev. 61.52

Sheet 5 of 23  
 Series F Nassau

A.T. Reynolds  
 G.N. Clark  
 11/11/23

A.T. Reynolds  
 G.N. Clark  
 11/11/23

Harvard - Portland  
 3

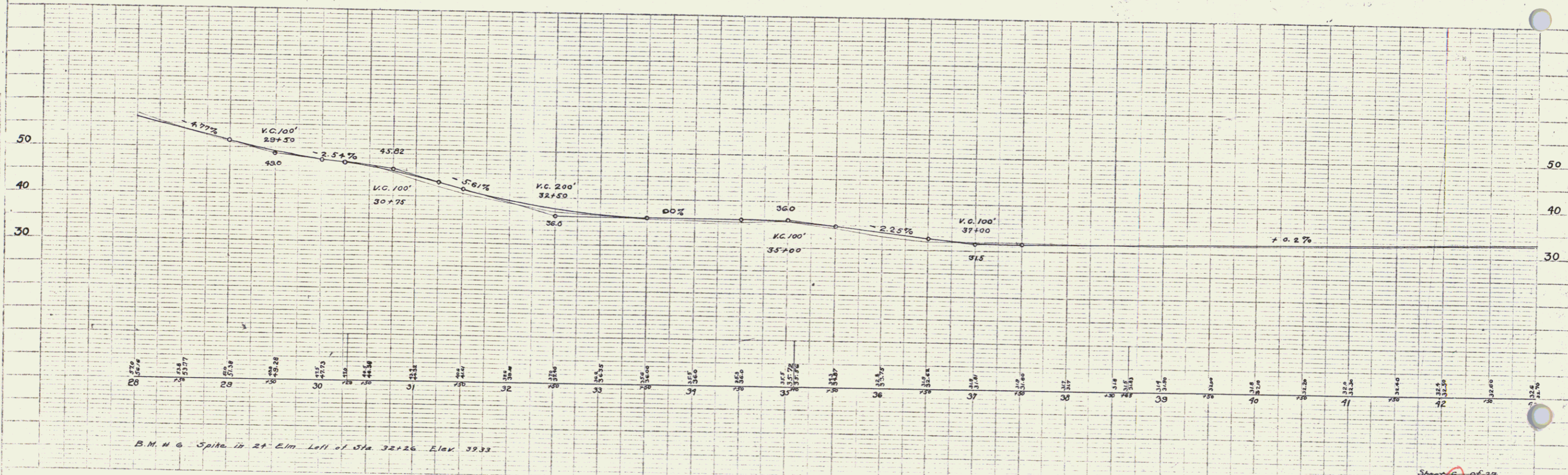
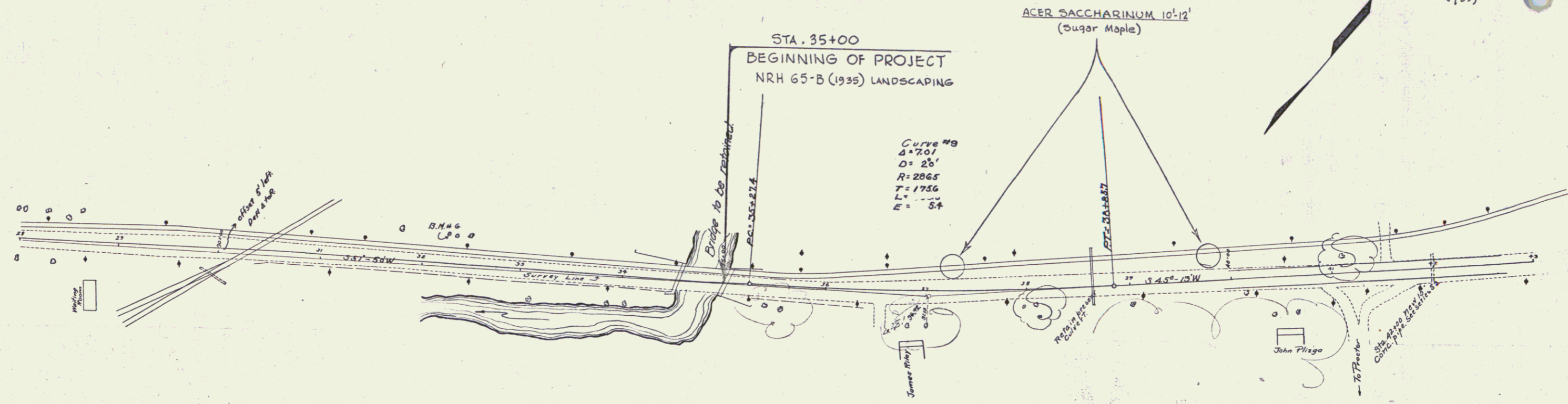
**GUARD RAIL REQUIRED**  
 ON LEFT  
 Sta 40+50 to Sta 41+46 Length 96 ft  
 " 41+60 " " 43+00 " 142 "  
 ON RIGHT  
 Sta 30+26 to Sta 34+50 Length 424 ft  
 " 35+00 " " 35+96 " 96 "  
 " 38+33 " " 38+77 " 44 "  
 " 41+08 " " 42+12 " 24 "  
 Total this sheet 798 ft

**NEW CULVERTS REQUIRED**  
 Sta. 42+00 15" Conc Pipe 30 ft  
 1-2 1/2-5 Conc 18 Cu yds.

NRH		FISCAL SHEET TOTAL	
FED. ROAD DIST. NO.	STA. I	YEAR	NO. SHEETS
65-B	1935	1935	8
(1935)			

PLAN  
 DATE 5/23/35  
 BY [Signature]  
 CHECKED [Signature]  
 IN CHARGE [Signature]  
 TITLE [Signature]

PLAN  
 DATE 5/23/35  
 BY [Signature]  
 CHECKED [Signature]  
 IN CHARGE [Signature]  
 TITLE [Signature]



B.M. #6 Spike in 21' Elm Left of Sta 32+26 Elev 39.32



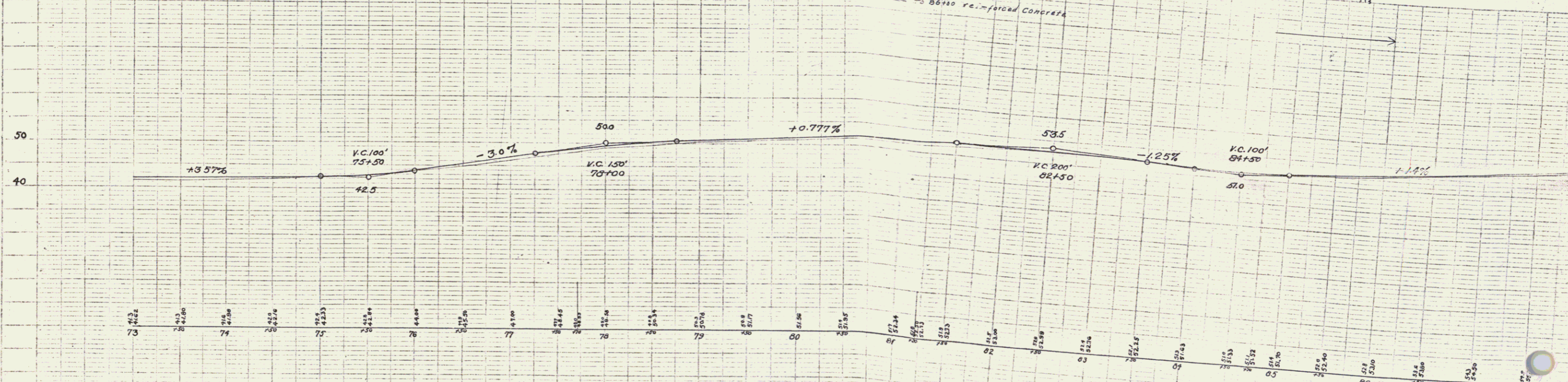
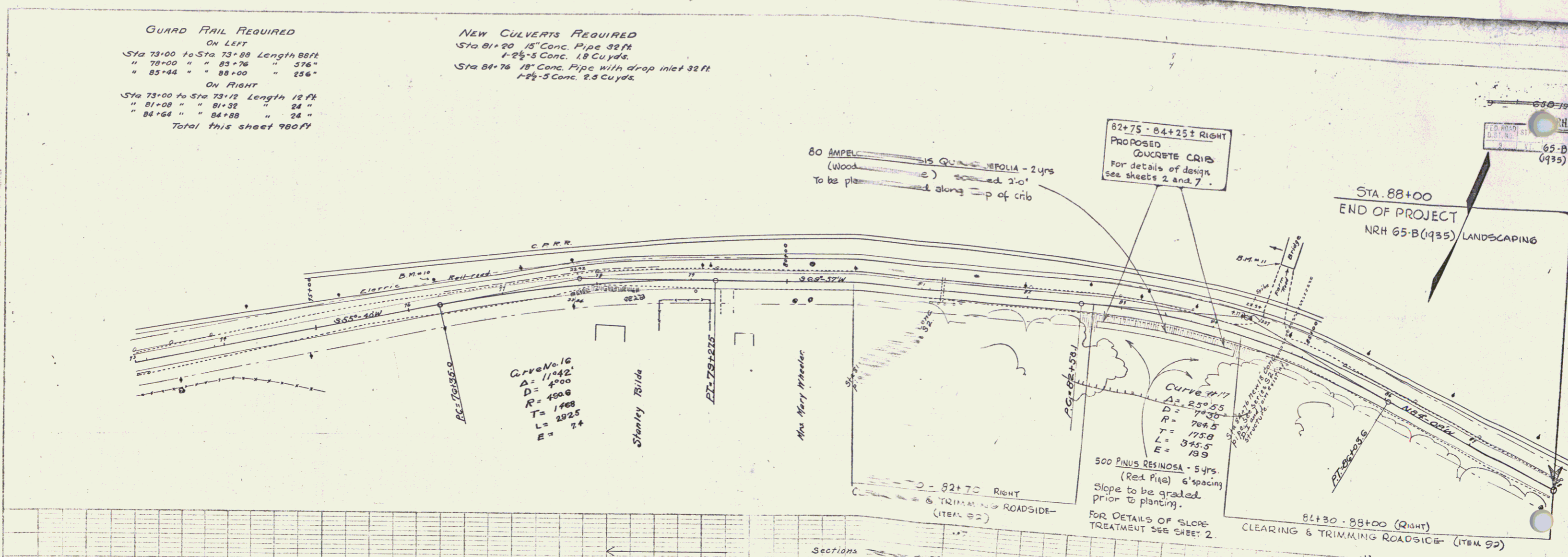


**GUARD RAIL REQUIRED**  
 ON LEFT  
 Sta 73+00 to Sta 73+88 Length 88ft  
 " 78+00 " " 83+76 " 576"  
 " 85+44 " " 88+00 " 256"  
 ON RIGHT  
 Sta 73+00 to Sta 73+12 Length 12 ft  
 " 81+08 " " 81+32 " 24"  
 " 84+64 " " 84+88 " 24"  
 Total this sheet 980 ft

**NEW CULVERTS REQUIRED**  
 Sta 81+20 15" Conc. Pipe 32 ft  
 1-2 1/2-5 Conc. 18 Cuyds.  
 Sta 84+76 18" Conc. Pipe with drop inlet 32 ft  
 1-2 1/2-5 Conc. 2.5 Cuyds.

9/23  
 A.T. Wynn  
 E.L. Wynn  
 R.C. Wynn

9/23  
 A.T. Wynn  
 E.L. Wynn  
 R.C. Wynn



B.M.#10 Spike in Trully Pole, Left of Sta. 73+20 Elev. 43.97  
 B.M.#11 E. Corner N. Abutment of Bridge, Sta. 81+16 Elev. 44.2

SERIES NRH No. 65-B(1935) Landscaping  
 SHEET 6 OF 7  
 9/23  
 SERIES F - 65-B(1935) Landscaping

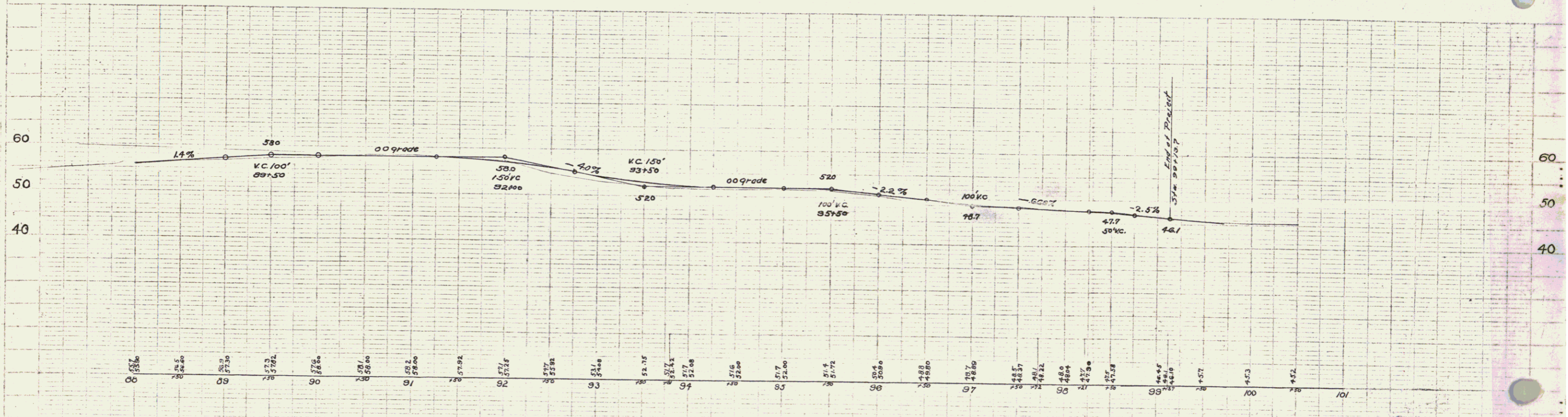
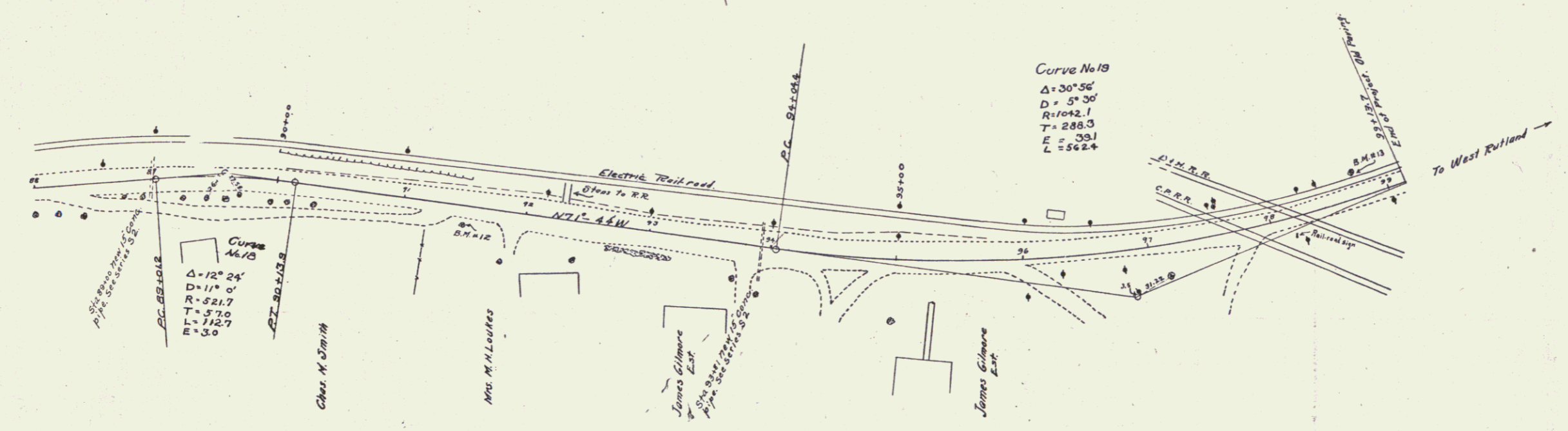
**GUARD RAIL REQUIRED**  
 ON LEFT  
 Sta 88+00 to Sta 93+72 Length 572 ft  
 ON RIGHT  
 Sta 88+00 to Sta 89+12 Length 24 ft  
 Total this sheet 616 ft

**NEW CULVERTS REQUIRED**  
 Sta 89+00 15" Conc. Pipe 32 ft  
 1-2 1/2" Conc. 18 Cu yds.  
 Sta 93+81 15" Conc. Pipe 48 ft  
 1-2 1/2" Conc. 18 Cu yds.

STATE OF MISSISSIPPI  
 DEPARTMENT OF HIGHWAYS  
 PROJECT NO. 163B 723 70 23

PLAN  
 A. J. Bunnell  
 G. H. Cook  
 7/23

ELEVATION  
 A. J. Bunnell  
 G. H. Cook  
 7/23



B.M. 12 Spike in 2" Maple, Right of Sta. 91+77 Elev. 60.00  
 B.M. 13 Spike in 2" Elm, Left of Sta. 91+77 Elev. 48.60