

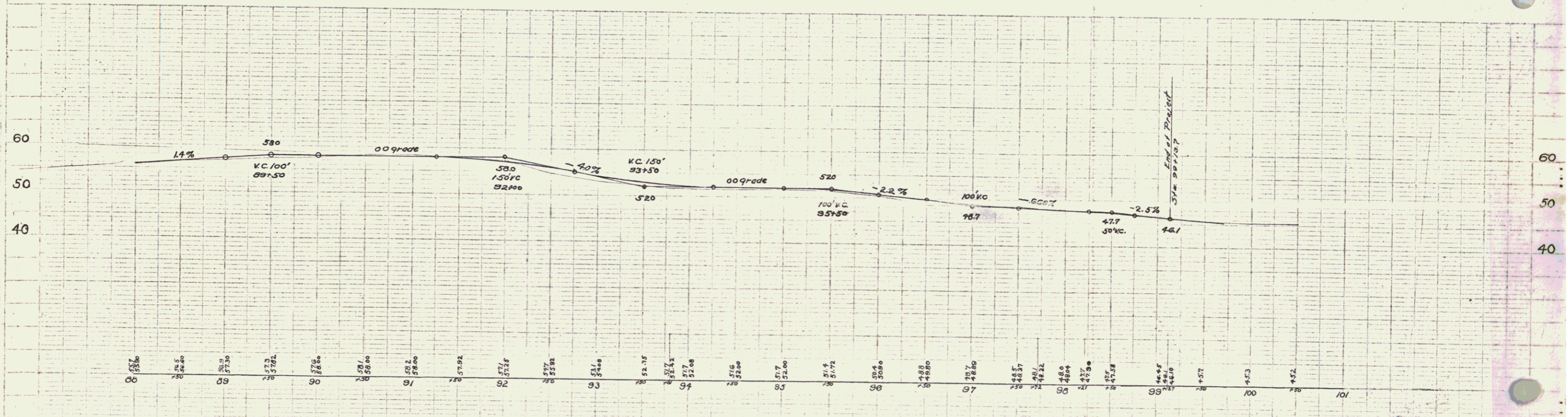
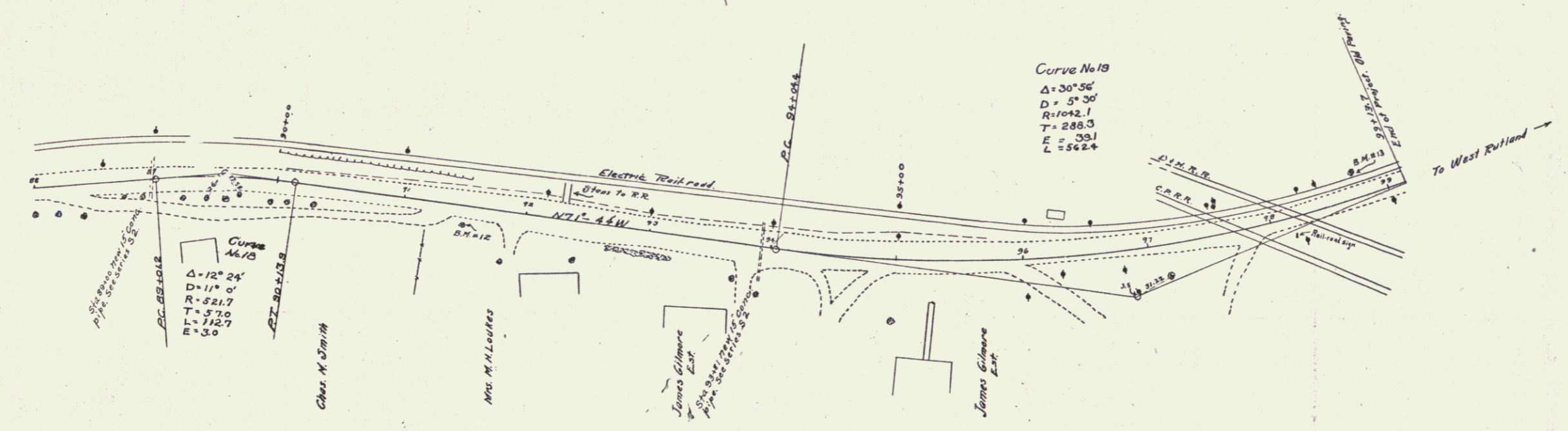
**GUARD RAIL REQUIRED**  
 ON LEFT  
 Sta 88+00 to Sta 93+72 Length 572 ft  
 ON RIGHT  
 Sta 88+88 to Sta 89+12 Length 24 ft  
 Total this sheet 616 ft

**NEW CULVERTS REQUIRED**  
 Sta 89+00 15" Conc. Pipe 32 ft  
 1-2 1/2" Conc. 18 Cu yds.  
 Sta 93+81 15" Conc. Pipe 48 ft  
 1-2 1/2" Conc. 18 Cu yds.

STATE OF MISSISSIPPI  
 DEPARTMENT OF HIGHWAYS  
 PROJECT NO. 163B 723 70 23

PLAN  
 A. J. Bunnell  
 G. H. Cook  
 7/23

ELEVATION  
 A. J. Bunnell  
 G. H. Cook  
 7/23



B.M. 12 Spike in 2" Maple, Right of Sta. 91+77 Elev. 60.00  
 B.M. 13 Spike in 2" Elm, Left of Sta. 91+77 Elev. 48.60

Sheet 10 of 23  
 Series F No. 63B Filed