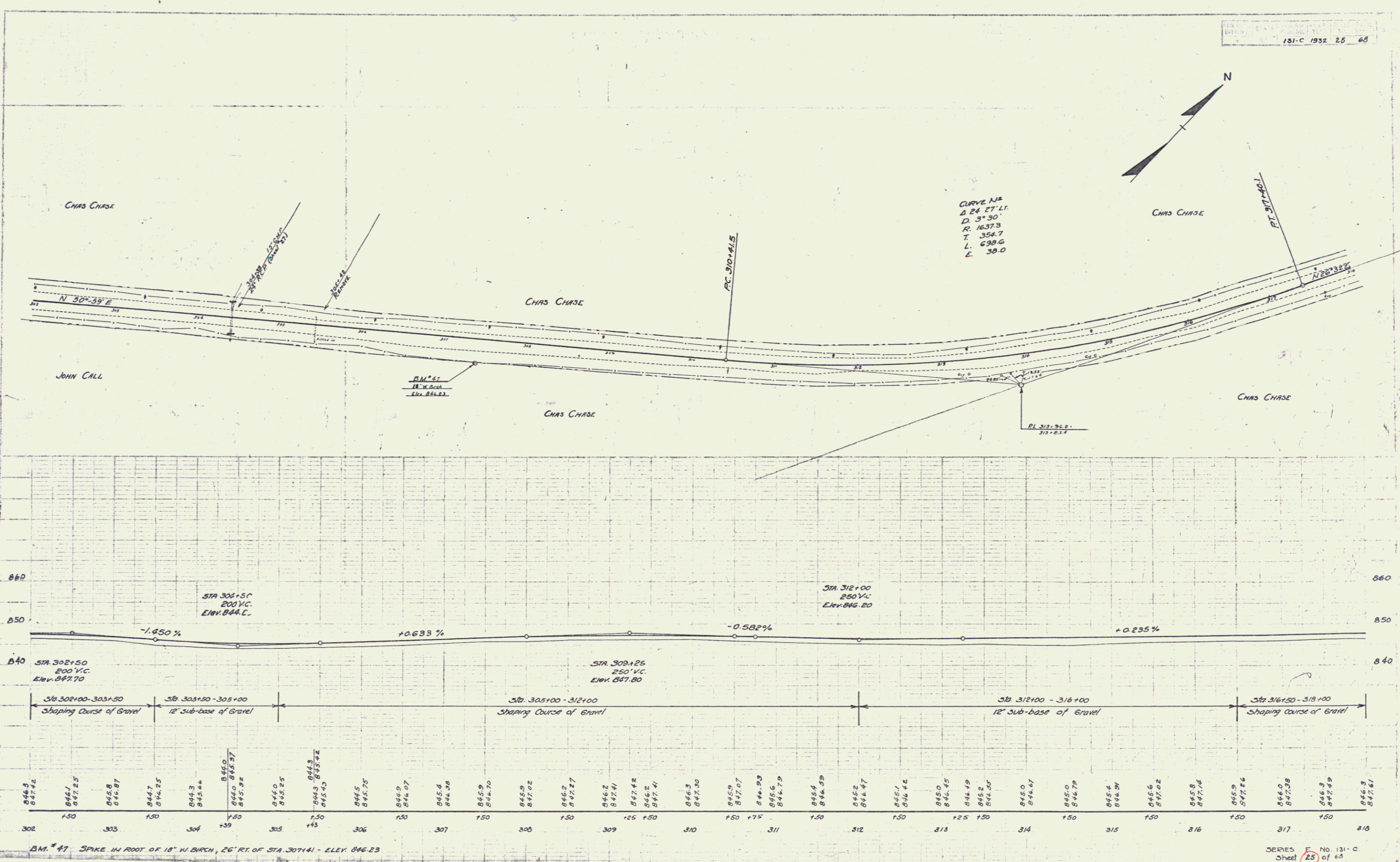


W. J. TRACY
 CIVIL ENGINEER
 100 N. 1st St. St. Paul, Minn.

10/22
 J.E.F.-L.A.R.
 M.H.B.



CURVE NO. 2
 Δ 26° 27' LT.
 D. 37° 30'
 R. 1637.3
 T. 354.7
 L. 698.6
 E. 38.0

Station	Elevation
302	846.3
302	847.42
303	846.1
303	847.25
303	845.8
303	846.87
304	844.7
304	846.25
304	844.3
304	845.64
304	845.32
305	846.0
305	845.25
305	844.8
305	845.75
306	844.9
306	846.07
307	845.4
307	846.28
308	845.9
308	846.70
308	845.9
308	847.02
309	846.2
309	847.27
309	846.2
309	847.41
309	847.42
309	846.2
309	847.41
310	846.3
310	847.20
310	845.9
310	847.07
311	844.93
311	845.6
311	844.79
311	845.4
311	846.28
312	845.2
312	846.47
312	845.7
312	846.42
313	845.0
313	846.45
313	846.19
313	845.2
313	846.25
314	845.0
314	846.47
314	845.0
314	846.79
315	845.4
315	846.29
315	845.5
315	847.02
316	845.8
316	847.04
316	845.9
316	847.14
317	846.0
317	847.28
317	846.3
317	847.49
318	846.3
318	847.61

BM # 47 SPIKE IN ROOT OF 18" W. BIRCH, 26' RT. OF STA. 307+41 - ELEV. 846.23

23