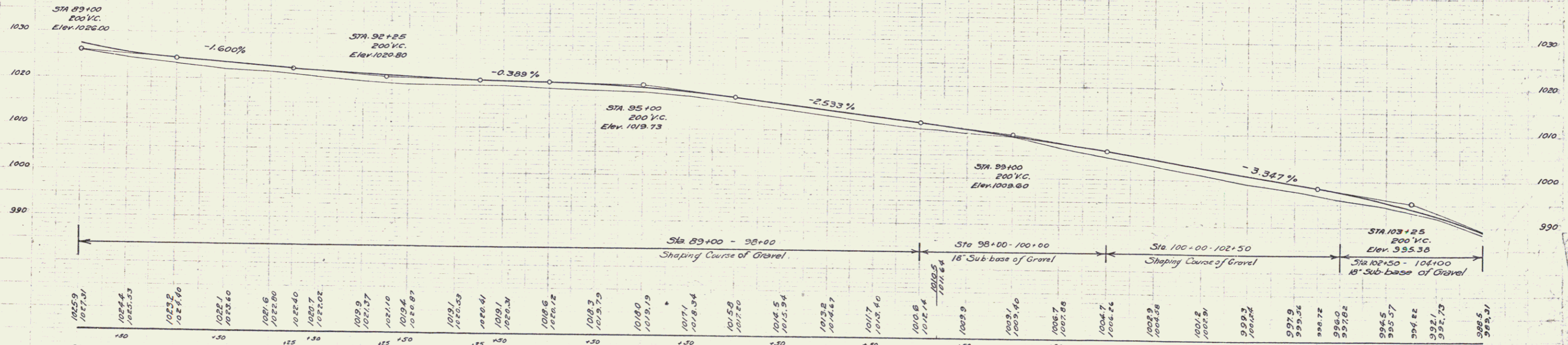
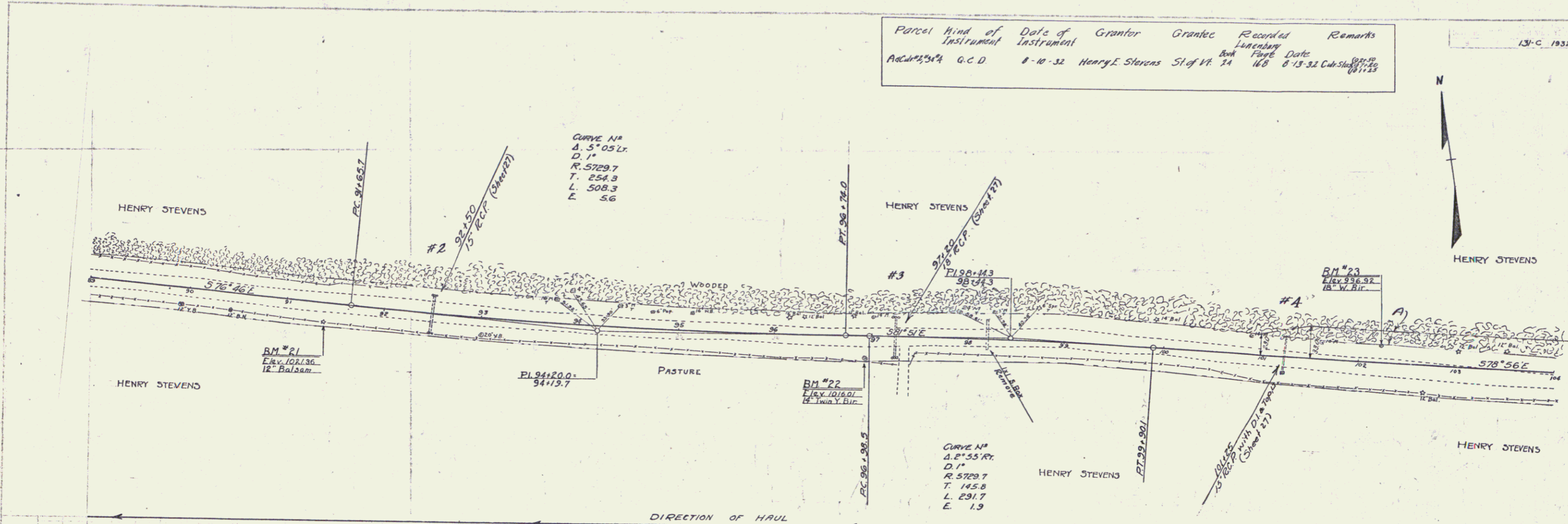


Parcel	Kind of Instrument	Date of Instrument	Grantor	Grantee	Recorded Lunenburg Book	Page	Date	Remarks
Ac 424/4	G.C.D.	8-10-32	Henry E. Stevens	St of Vt. 74	168	8-13-32	Cub. Sheds	

131-C 1932 11 68



Station	Elevation
89+00	1026.00
89+10	1025.59
89+20	1025.18
89+30	1024.77
89+40	1024.36
89+50	1023.95
89+60	1023.54
89+70	1023.13
89+80	1022.72
89+90	1022.31
89+00	1021.90
90+10	1021.49
90+20	1021.08
90+30	1020.67
90+40	1020.26
90+50	1019.85
90+60	1019.44
90+70	1019.03
90+80	1018.62
90+90	1018.21
91+00	1017.80
91+10	1017.39
91+20	1016.98
91+30	1016.57
91+40	1016.16
91+50	1015.75
91+60	1015.34
91+70	1014.93
91+80	1014.52
91+90	1014.11
92+00	1013.70
92+10	1013.29
92+20	1012.88
92+30	1012.47
92+40	1012.06
92+50	1011.65
92+60	1011.24
92+70	1010.83
92+80	1010.42
92+90	1010.01
93+00	999.60
93+10	999.19
93+20	998.78
93+30	998.37
93+40	997.96
93+50	997.55
93+60	997.14
93+70	996.73
93+80	996.32
93+90	995.91
94+00	995.50
94+10	995.09
94+20	994.68
94+30	994.27
94+40	993.86
94+50	993.45
94+60	993.04
94+70	992.63
94+80	992.22
94+90	991.81
95+00	991.40
95+10	990.99
95+20	990.58
95+30	990.17
95+40	989.76
95+50	989.35
95+60	988.94
95+70	988.53
95+80	988.12
95+90	987.71
96+00	987.30
96+10	986.89
96+20	986.48
96+30	986.07
96+40	985.66
96+50	985.25
96+60	984.84
96+70	984.43
96+80	984.02
96+90	983.61
97+00	983.20
97+10	982.79
97+20	982.38
97+30	981.97
97+40	981.56
97+50	981.15
97+60	980.74
97+70	980.33
97+80	979.92
97+90	979.51
98+00	979.10
98+10	978.69
98+20	978.28
98+30	977.87
98+40	977.46
98+50	977.05
98+60	976.64
98+70	976.23
98+80	975.82
98+90	975.41
99+00	975.00
99+10	974.59
99+20	974.18
99+30	973.77
99+40	973.36
99+50	972.95
99+60	972.54
99+70	972.13
99+80	971.72
99+90	971.31
100+00	970.90
100+10	970.49
100+20	970.08
100+30	969.67
100+40	969.26
100+50	968.85
100+60	968.44
100+70	968.03
100+80	967.62
100+90	967.21
101+00	966.80
101+10	966.39
101+20	965.98
101+30	965.57
101+40	965.16
101+50	964.75
101+60	964.34
101+70	963.93
101+80	963.52
101+90	963.11
102+00	962.70
102+10	962.29
102+20	961.88
102+30	961.47
102+40	961.06
102+50	960.65
102+60	960.24
102+70	959.83
102+80	959.42
102+90	959.01
103+00	958.60
103+10	958.19
103+20	957.78
103+30	957.37
103+40	956.96
103+50	956.55
103+60	956.14
103+70	955.73
103+80	955.32
103+90	954.91
104+00	954.50

B.M. # 21 SPIKE IN ROOT OF 12' BALSAM, 18' RT. OF STA. 91+39 - ELEV. 1021.36
 B.M. # 22 SPIKE IN ROOT OF 14' Y. BIRCH, 23' RT. OF STA. 90+01 - ELEV. 1016.01
 B.M. # 23 SPIKE IN ROOT OF 18' Y. BIRCH, 153' LT. OF STA. 102+21 - ELEV. 998.92

SERIES E NO 131-C
 Sheet 11 of 68

9