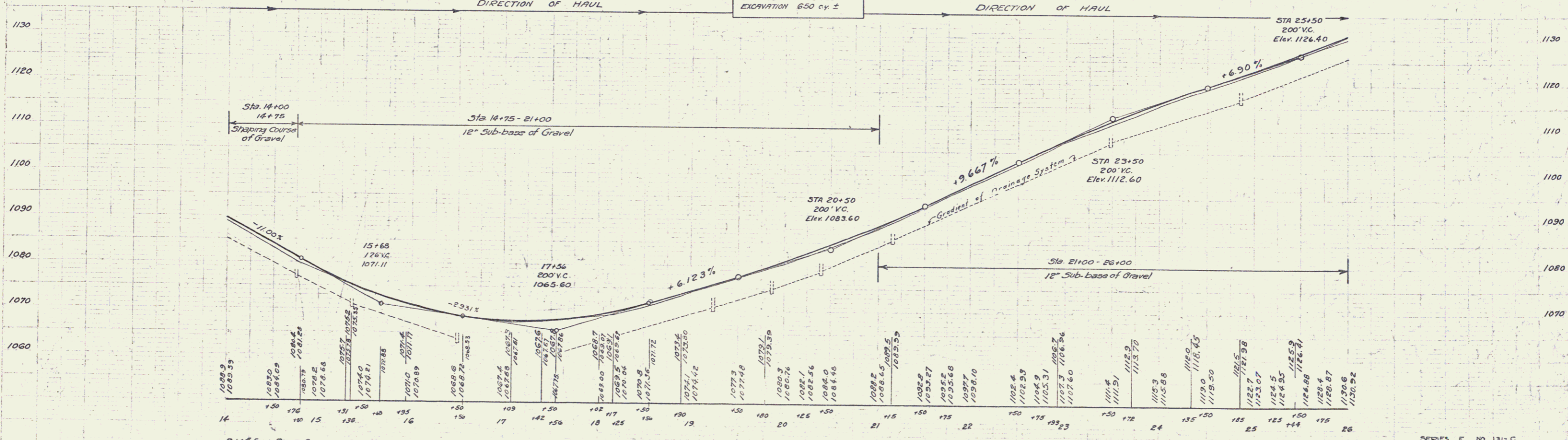
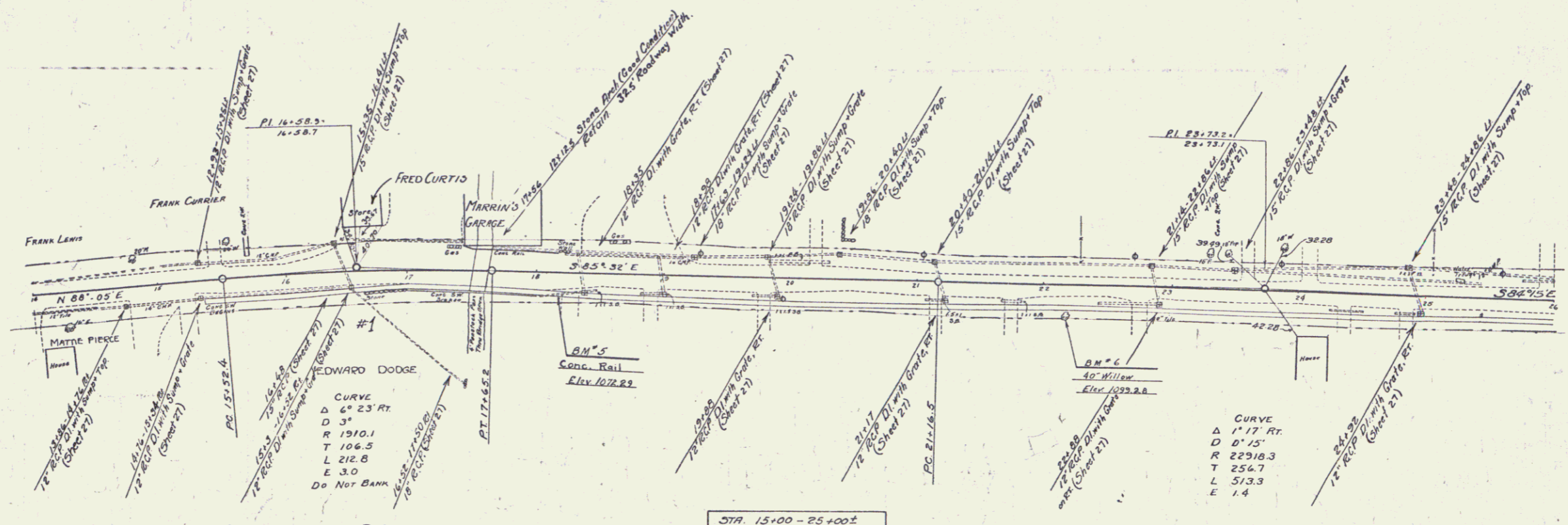


Parcel	Kind of Instrument	Date of Instrument	Grantor	Grantee	Recorded	Remarks
Culv #1	Q.C.D.	8-10-32	E. H. Dodge	Staff H. 3A	172	8-13-32 Culv. Sta. 16+52

STATE OF VIRGINIA  
131-C 1932 6 68



B.M. #5 PAINT SPOT ON CONC. BRIDGE RAIL 18' RT. OF STA. 18+10 - ELEV. 1072.23  
B.M. #6 SPIKE IN ROOT OF 40' WILLOW, 22' RT. OF STA. 22+10 - ELEV. 1099.28

SERIES F NO 131-C  
Sheet 6 of 68

4