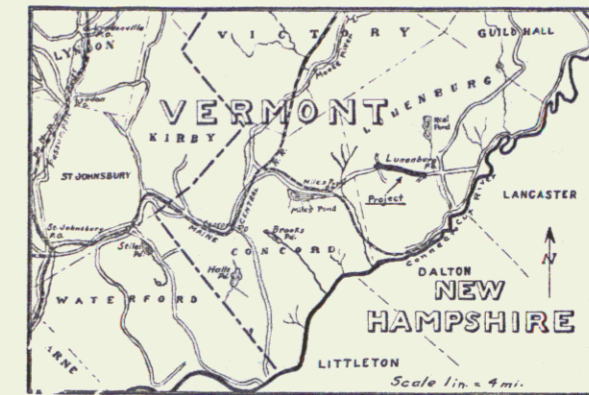


INDEX OF SHEETS

SHEET NO.	TITLE PAGE
2	TYPICAL CROSS-SECTION OF IMPROVEMENT
3	PLAN AND PROFILE STA. 0+00 TO STA. 14+00
4	" " " " 14+00 " " 29+00
5	" " " " 29+00 " " 44+00
6	" " " " 44+00 " " 59+00
7	" " " " 59+00 " " 74+00
8	" " " " 74+00 " " 89+00
9	" " " " 89+00 " " 104+25
10	BRIDGE STA. 0+37-0+62
11 To 19	CROSS SECTIONS

STATE OF VERMONT
 STATE HIGHWAY DEPARTMENT
 PLAN AND PROFILE OF PROPOSED
 STATE HIGHWAY
 FEDERAL AID PROJECT
 TOWN OF LUNENBURG *Pin # 99R156*
 NEW ROAD
 WEST NEIGHBORHOOD FOUR CORNERS TO E. CONCORD TURN

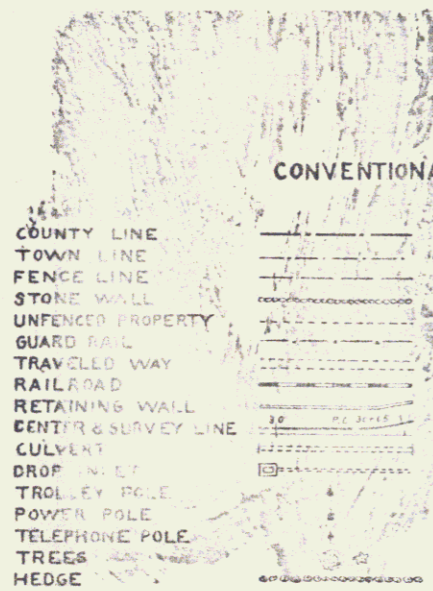
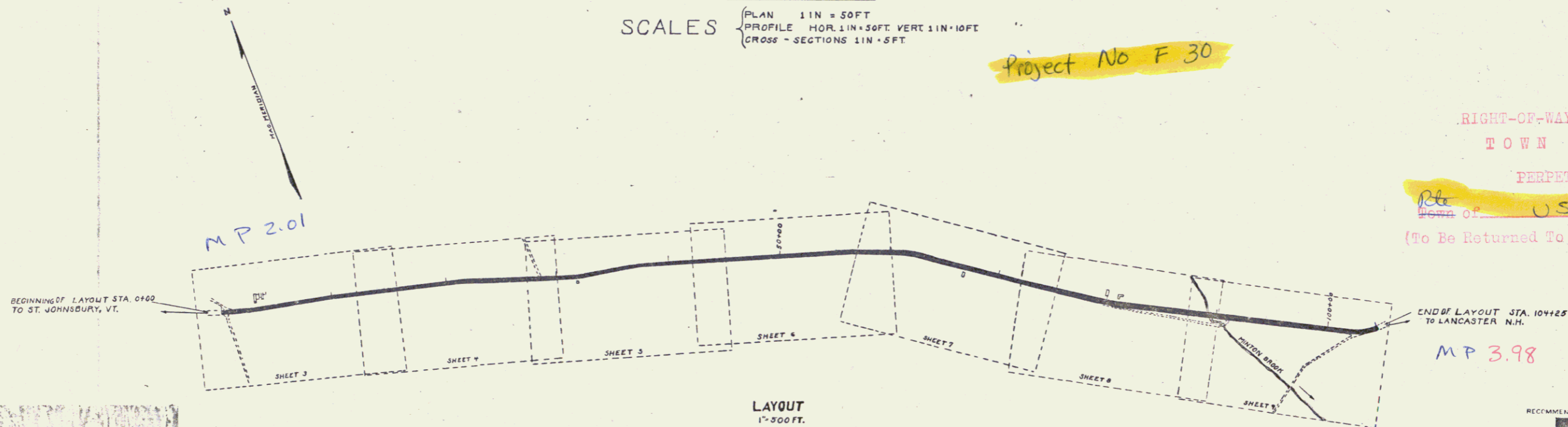
FED. ROAD DIST. NO.	STATE	FED. AID PROJ. NO.	FISCAL YEAR	SHEET NO.	TOTAL SHEETS
2	VT.	30	1921	7	19



SCALES { PLAN 1 IN = 50 FT
 PROFILE HOR. 1 IN = 50 FT VERT. 1 IN = 10 FT
 CROSS-SECTIONS 1 IN = 5 FT

Project No F 30

RIGHT-OF-WAY DIVISION
 TOWN FILE
 PERPETUAL
Rte
 DEPT. OF US 2
 (To Be Returned To R.O.W. Division)



CONVENTIONAL SIGNS

COUNTY LINE	GROUND ELEVATION	DEFLECTION ANGLE	Δ
TOWN LINE	GRADE ELEVATION	DEGREE OF CURVE	D.
FENCE LINE		RADIUS OF CURVE	R.
STONE WALL		TANGENT DISTANCE	T.
UNFENCED PROPERTY		LENGTH OF CURVE	L.
GUARD RAIL		EXTERNAL DISTANCE	E.
TRAVELLED WAY		POINT OF INTERSECTION P. I.	P. I.
RAILROAD		POINT OF CURVE	P. C.
RETAINING WALL		POINT OF TANGENT	P. T.
CENTER & SURVEY LINE			
CULVERT			
DROP IN ELEVATION			
TROLLEY POLE			
POWER POLE			
TELEPHONE POLE			
TREES			
HEDGE			

RECOMMENDED	
STATE ENGINEER	
APPROVED	
GOVERNOR	
SUBMITTED BY ORDER OF THE STATE HIGHWAY BOARD	
COMMISSIONER OF HIGHWAYS	
RECOMMENDED	
DISTRICT ENGINEER	
BUREAU OF PUBLIC ROADS	
RECOMMENDED FOR APPROVAL	
CHIEF ENGINEER - BUREAU OF PUBLIC ROADS	
APPROVED	
DIRECTOR - BUREAU OF PUBLIC ROADS	

01/01/21

Series F No 30 Filed
 Sheet 7 of 19

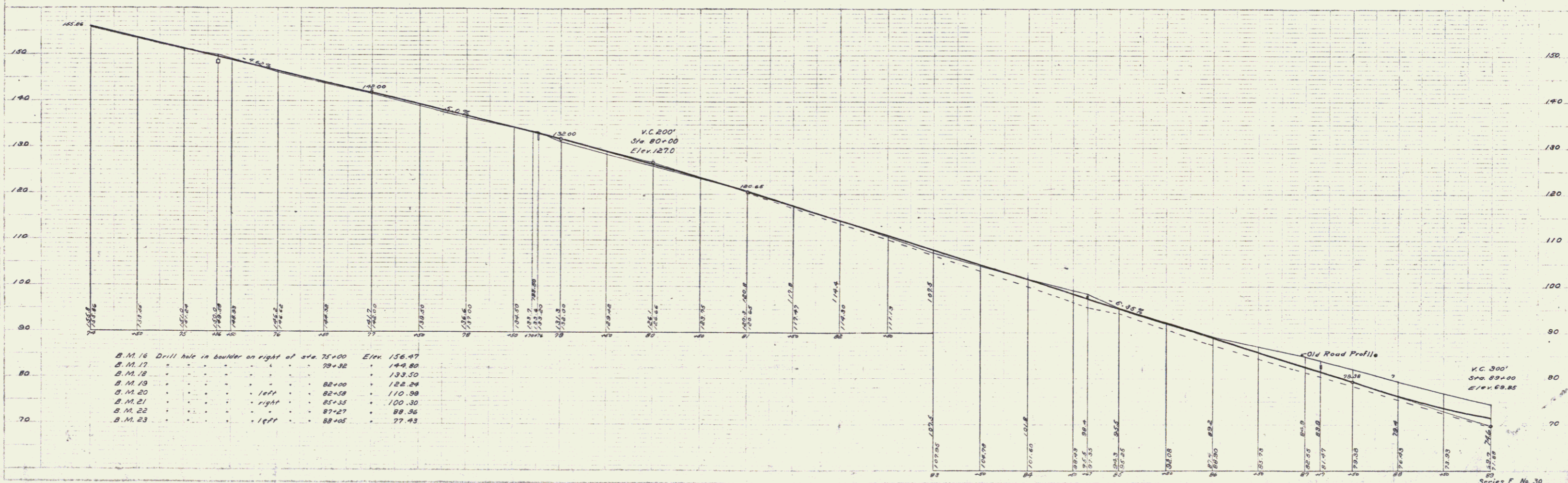
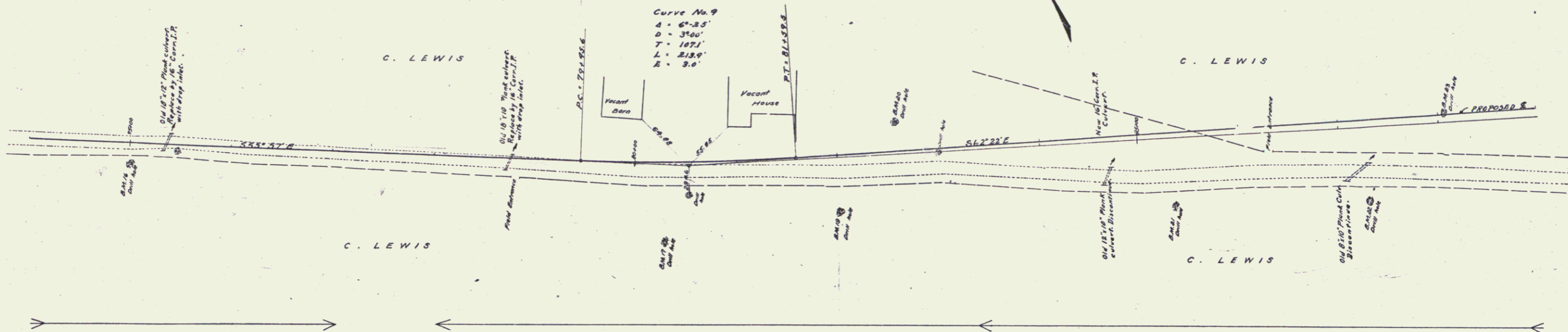
GUARD RAIL REQUIRED
ON LEFT
 Sta. 75+29 to 75+53 Length 24 FT.
 " 78+69 " 78+73 " 24 "
 " 84+55 " 84+79 " 24 "
ON RIGHT
 Sta. 75+18 to 75+42 Length 24 FT.
 " 78+58 " 78+82 " 24 "
 " 84+55 " 84+79 " 24 "
TOTAL THIS SHEET 144 FT.

NEW CULVERTS REQUIRED
 Sta. 75+36 16" Corr. I.P. With Drop Inlet. 30 FT.
 1-2 1/2-5 Concrete 1.7 Cu.Yds.
 Sta. 78+76 16" Corr. I.P. With Drop Inlet. 30 FT.
 1-2 1/2-5 Concrete 1.5 Cu.Yds.
 Sta. 84+67 16" Corr. I.P. 20 FT.
 1-2 1/2-5 Concrete 1.5 Cu.Yds.

STANDARD UNDERDRAIN REQUIRED
 Sta. 74+00 to 89+00 Length 1500 FT.

FED. ROAD DIST. NO.	STATE	FED. AID PROJ. NO.	FISCAL YEAR	SHEET NO.	TOTAL SHEETS
9	VT	30	1921	8	19

POOR ORIGINAL COPY



B.M.	Description	Station	Elevation
B.M. 16	Drill hole in boulder on right of sta.	75+00	156.47
B.M. 17	"	78+32	144.80
B.M. 18	"	"	133.50
B.M. 19	"	82+00	122.24
B.M. 20	"	82+38	110.30
B.M. 21	right	85+35	100.30
B.M. 22	"	87+27	88.56
B.M. 23	"	88+05	77.43

GUARD RAIL REQUIRED

ON LEFT

Sta. 89+02	to 89+26	Length 24 FT.
- 89+47	- 90+67	- 120 -
- 92+38	- 92+62	- 24 -
- 95+59	- 95+83	- 24 -

ON RIGHT

Sta. 89+17	to 89+41	Length 24 FT.
- 89+62	- 91+22	- 160 -
- 91+92	- 92+96	- 104 -
- 95+59	- 95+83	- 24 -

TOTAL THIS SHEET: 504 FT.

NEW CULVERTS REQUIRED

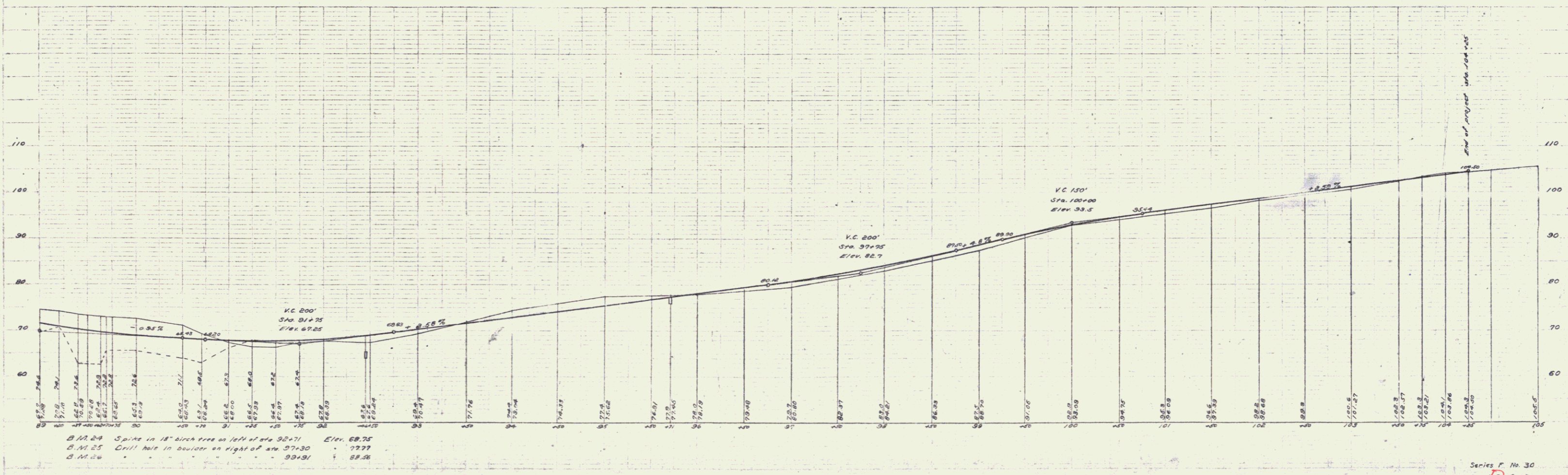
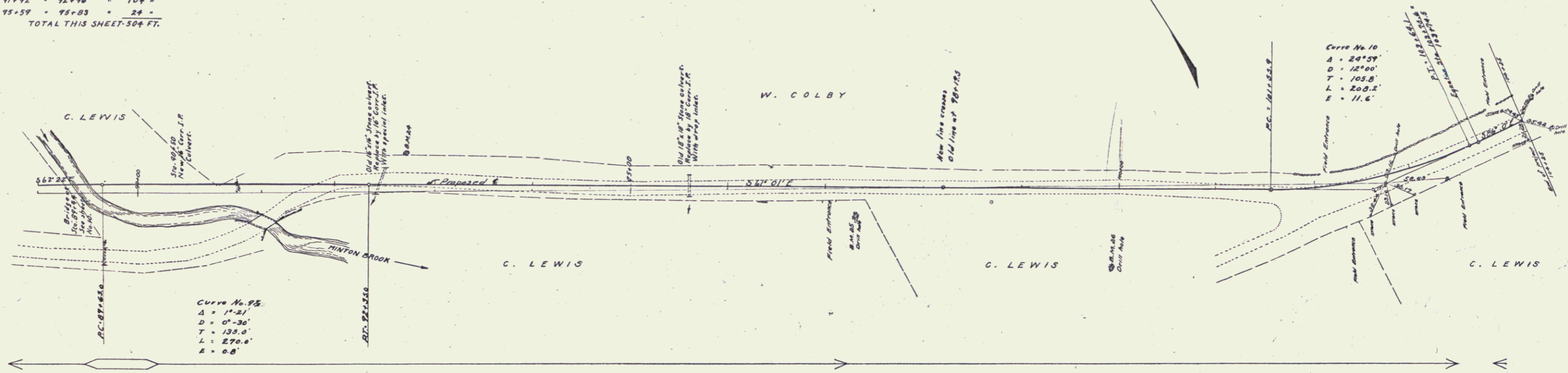
Sta. 90+50	16" Corr. I.P.	34 FT.
- 92+46.5	16" Corr. I.P. With Special Inlet	36 FT.
- 95+71	18" Corr. I.P. With Drop Inlet	26 FT.

STANDARD UNDERDRAIN REQUIRED

Sta. 89+00	to 89+25	Length 25 FT.
------------	----------	---------------

FED. ROAD DIST. NO.	STATE	FED. AID PROJ. NO.	FISCAL YEAR	SHEET NO.	TOTAL SHEETS
8	VT.	30	1921	9	19

POOR ORIGINAL COPY



W. Colby
 C. Lewis
 Dunton Brook

B.M. 24 Spike in 18" birch tree on left of sta. 92+71 Elev. 69.75
 B.M. 25 Drill hole in boulder on right of sta. 97+30 Elev. 77.77
 B.M. 26 Elev. 88.36

8