

GUARD RAIL REQUIRED

ON LEFT

Sta. 89+02 to 89+26	Length 24 FT.
- 89+47 - 90+67	- 120 -
- 92+38 - 92+62	- 24 -
- 95+59 - 95+83	- 24 -

ON RIGHT

Sta. 89+17 to 89+41	Length 24 FT.
- 89+62 - 91+22	- 160 -
- 91+92 - 92+96	- 104 -
- 95+59 - 95+83	- 24 -

TOTAL THIS SHEET: 504 FT.

NEW CULVERTS REQUIRED

Sta. 90+50	16" Corr. I.P.	34 FT.
- 92+46	5-16" Corr. I.P. With Special Inlet	36 FT.
- 95+71	18" Corr. I.P. With Drop Inlet	26 FT.

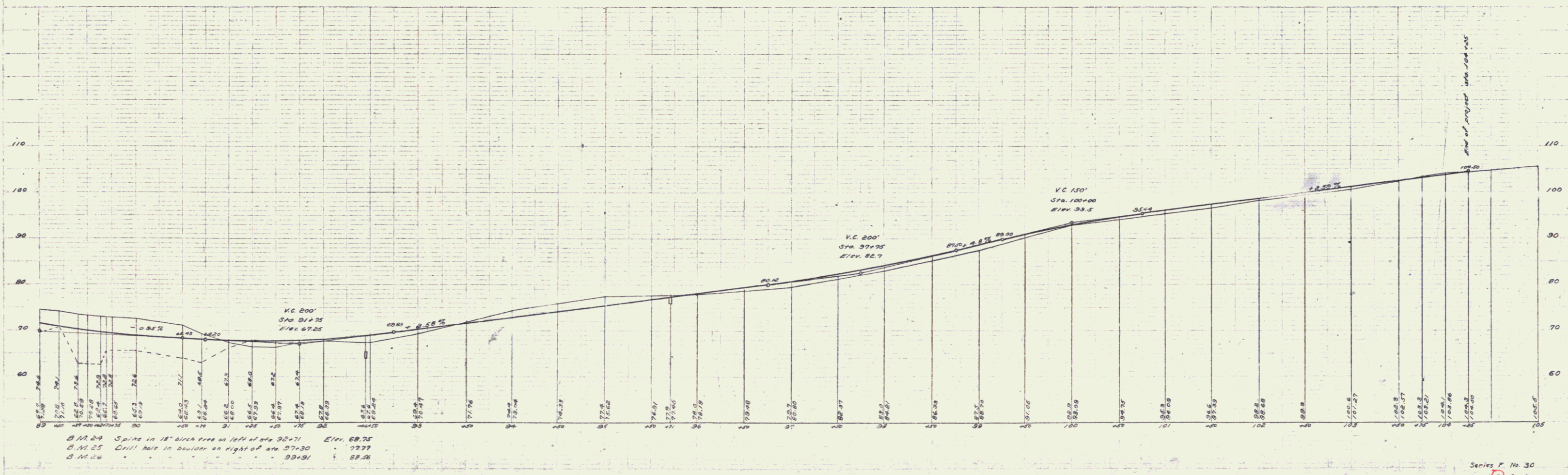
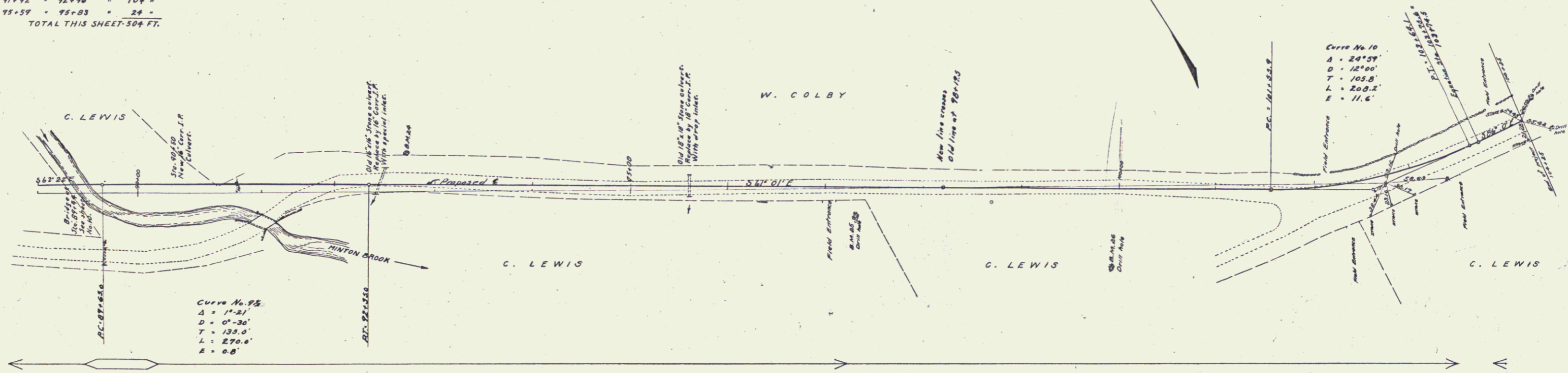
1-24-5 Concrete 1.8 Cu Yds.
1-24-5 Concrete 2.6 Cu Yds.
1-24-5 Concrete 1.9 Cu Yds.

STANDARD UNDERDRAIN REQUIRED

Sta. 89+00 to 89+25 Length 25 FT.

FED. ROAD DIST. NO.	STATE	FED. AID PROJ. NO.	FISCAL YEAR	SHEET NO.	TOTAL SHEETS
8	VT.	30	1921	9	19

POOR ORIGINAL COPY



1/11/21
 H. W. [unclear]
 [unclear]
 [unclear]