

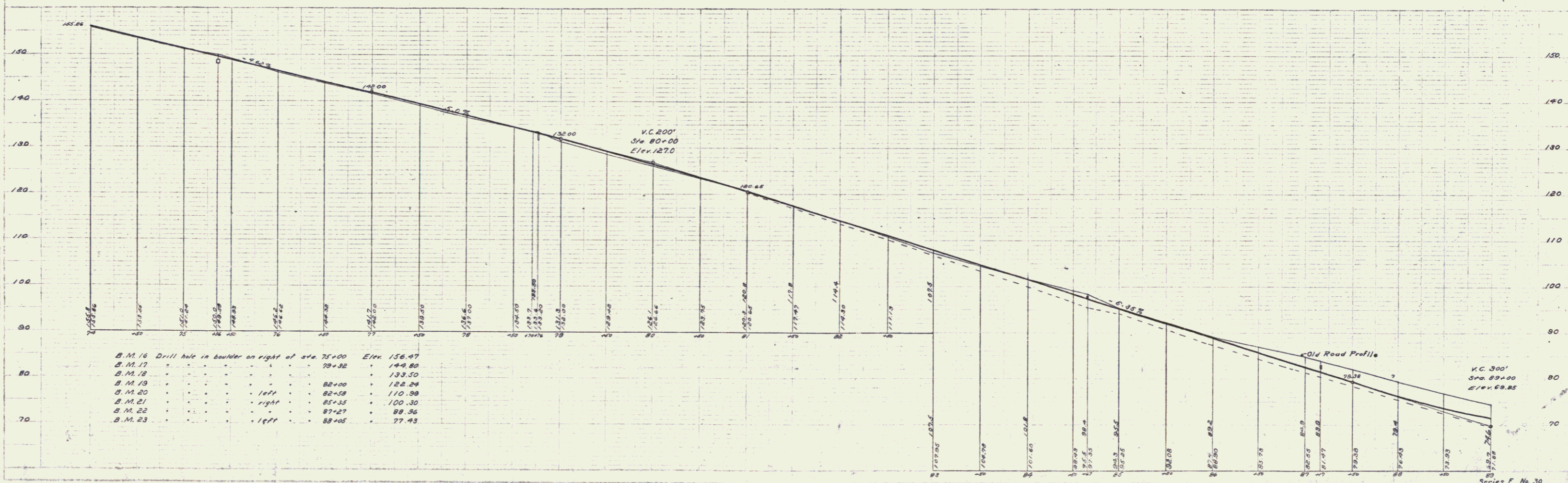
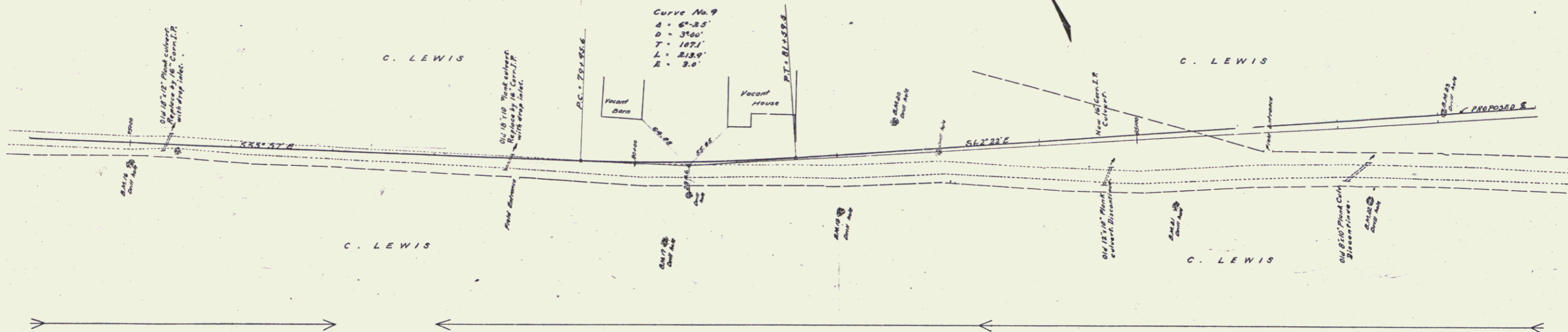
GUARD RAIL REQUIRED
ON LEFT
 Sta. 75+29 to 75+53 Length 24 FT.
 " 78+69 " 78+73 " 24 "
 " 84+55 " 84+79 " 24 "
ON RIGHT
 Sta. 75+18 to 75+42 Length 24 FT.
 " 78+58 " 78+82 " 24 "
 " 84+55 " 84+79 " 24 "
TOTAL THIS SHEET 144 FT.

NEW CULVERTS REQUIRED
 Sta. 75+36 16" Corr. I.P. With Drop Inlet. 30 FT.
 " 78+76 16" Corr. I.P. With Drop Inlet. 30 FT.
 " 84+67 16" Corr. I.P. 20 FT.
 1-2 1/2" Concrete 1.7 Cu.Yds.
 1-2 1/2" Concrete 1.5 Cu.Yds.
 1-2 1/2" Concrete 1.5 Cu.Yds.

STANDARD UNDERDRAIN REQUIRED
 Sta. 74+00 to 89+00 Length 1500 FT.

FED. ROAD DIST. NO.	STATE	FED. AID PROJ. NO.	FISCAL YEAR	SHEET NO.	TOTAL SHEETS
9	VT	30	1921	8	19

POOR ORIGINAL COPY



B.M.	Description	Station	Elevation
B.M. 16	Drill hole in boulder on right of sta. 75+00	75+00	156.47
B.M. 17	"	78+32	144.80
B.M. 18	"	"	133.50
B.M. 19	"	82+00	122.24
B.M. 20	"	82+38	110.38
B.M. 21	" right	85+35	100.30
B.M. 22	"	87+27	88.56
B.M. 23	"	88+05	77.43