

INDEX OF SHEETS

1	TITLE PAGE
2-3	TYPICAL SECTIONS OF IMPROVEMENT (3" BITUMINOUS CONCRETE PAVEMENT, ITEM 361-B)
4	QUANTITY SHEET, ITEMS
5	ITEM DETAIL, AND DRAINAGE SHEET
6-10	GRADE AND EARTHWORK SHEETS
11-27	PLAN AND PROFILE
28	STANDARD BRIDGE SHEET SB-20-86
29	STANDARD BRIDGE SHEET SB-AS-45* SKEW 57
30-31	STANDARD BRIDGE SHEETS SCB-30-55 (122)
32-33	STANDARD BRIDGE SHEETS SB-50-57 (122)
34	STANDARD BRIDGE SHEET SB-22-58
35	STANDARD ROADWAY SHEET B-1 BANKING TABLES
36	STANDARD ROADWAY SHEET D-8 DROP INLET
37	STANDARD ROADWAY SHEET J-1 MARKERS, PLANK GUARD RAIL, GUIDE POSTS
38	STANDARD ROADWAY SHEET D-2 DRAINAGE
39	STANDARD ROADWAY SHEET B-5 TYPICAL SLOPE GRADING
40	STANDARD ROADWAY SHEET A-51 DRILLING AND BLASTING
41	STANDARD ROADWAY SHEET G-3 THREE CABLE GUARD RAIL
42	STANDARD ROADWAY SHEET E-1 BARRICADES, SIGNS AND LIGHTS
42-A	STANDARD ROADWAY SHEET G-4 STEEL MARKER POSTS
43-51	BRIDGE PLANS, BRIDGE AT STA. 100 + 42 (MOOSE RIVER)
65-100	CROSS SECTIONS VERMONT U.S. RTE. 2
101-106	CROSS SECTIONS MOOSE RIVER CHANNEL
107-108	CROSS SECTIONS APPROACH AT 203 + 60 RT.
109-201	CROSS SECTIONS VICTORY RD.
132A, 133A, 134A, B	CROSS SECTIONS & TYPICAL, REST AREA

PROJECT NAME & NUMBER TYPE PAVEMENT AREA
 CONCORD F 028-4(1) BITUMINOUS CONCRETE 59,790 SY

RECORD PLANS
 MATERIALS
 SUBBASE OF CRUSHED GRAVEL - AUSTIN PIT - CONCORD, VERMONT.
 SUBBASE OF SAND - CALKINS PIT - CONCORD, VERMONT.
 CRUSHED STONE BASE COURSE & AGGREGATES FOR CONCRETE "B" - CALEDONIA SAND & GRAVEL CO. - WATERFORD, VERMONT.
 GRAVEL FOR SHOULDERS - NOBLE PIT - CONCORD, VERMONT.
 CONCRETE CLASS "B" - CARPENTER READY MIX CONCRETE - ST. JOHNSBURY, VT.
 PORTLAND CEMENT - DRAGON CEMENT CO. - NORTHAMPTON, PENNSYLVANIA.
 REINF. STEEL & STEEL PILING - BETHLEHEM STEEL CO.
 STRUCTURAL & SPIRAL STEEL - VT. STRUCTURAL STEEL CO. - BURLINGTON, VT.
 ASPHALT CEMENT - SOCONY VACUUM CO. - PROVIDENCE, RHODE ISLAND.
 BITUMINOUS CONCRETE - L.M. PIKE & SONS - LISBON, NEW HAMPSHIRE.
 REINFORCED CONCRETE PIPE - VT. CONCRETE PIPE CO. - WINDSOR, VERMONT.
 ASPHALT COATED CORRUGATED GALVANIZED METAL PIPE - NEW ENGLAND METAL CULVERT CO. - WHITE RIVER JUNCTION, VERMONT.
 CABLE GUARD RAIL, BRIDGE RAILING, STEEL MARKER POSTS & PROPERTY LINE FENCE - S.T. GRISWOLD & CO. INC. - ESSEX JUNCTION, VT.
 CONTRACTOR - OLSON CONSTRUCTION CORP. - MONTPELIER, VERMONT.
 RES. ENG. - FRANK E. ALDRICH.
 INSPECTORS - W. BOND, D. FOOTE, H. MILES.
 RECORD PLANS - FRANK E. ALDRICH

BEGINNING 4.09 MILES ALONG VERMONT U.S. ROUTE 2, FROM THE KIRBY-CONCORD TOWN LINE WHICH EQUALS THE CALEDONIA-ESSEX COUNTY LINE AND EXTENDING EASTERLY 22,660.7 FEET.

LENGTH OF ROADWAY 22,421.2 FEET = 4.247 MILES
 LENGTH OF BRIDGE 239.5 FEET = 0.045 MILES
 LENGTH OF PROJECT 22,660.7 FEET = 4.292 MILES

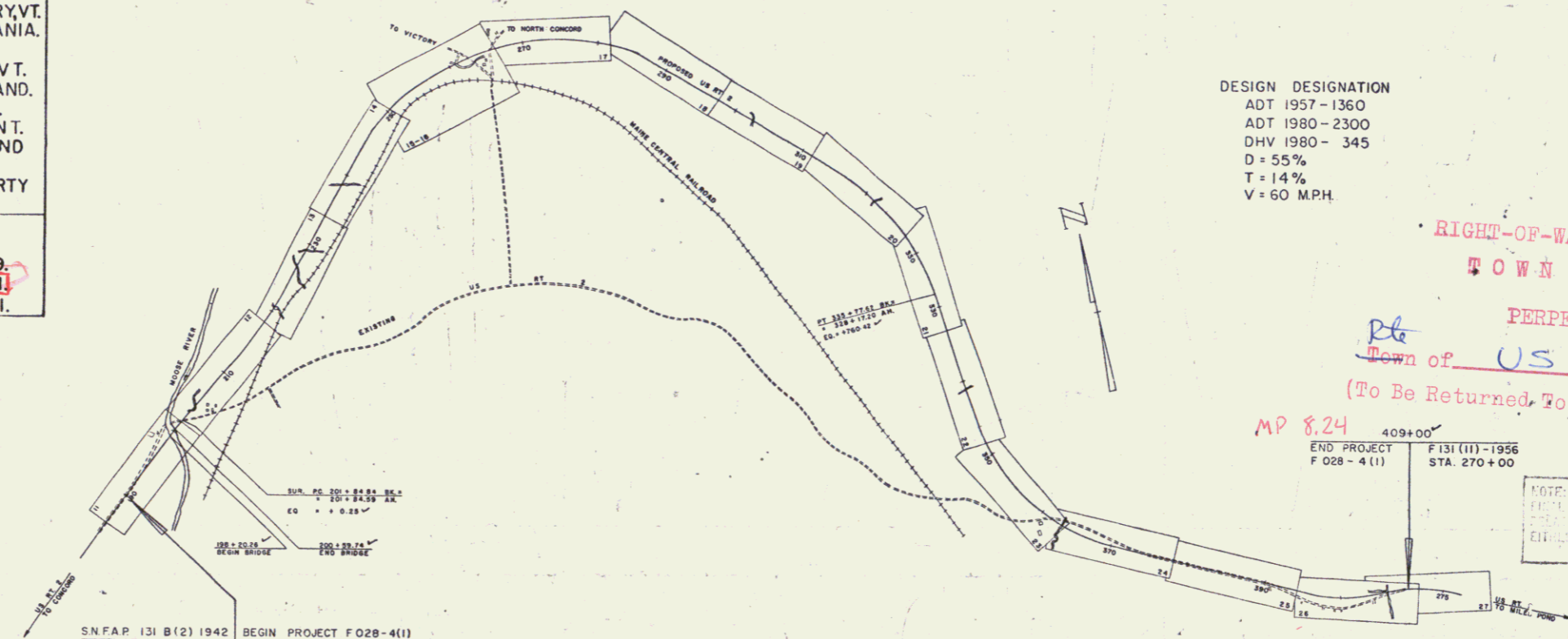
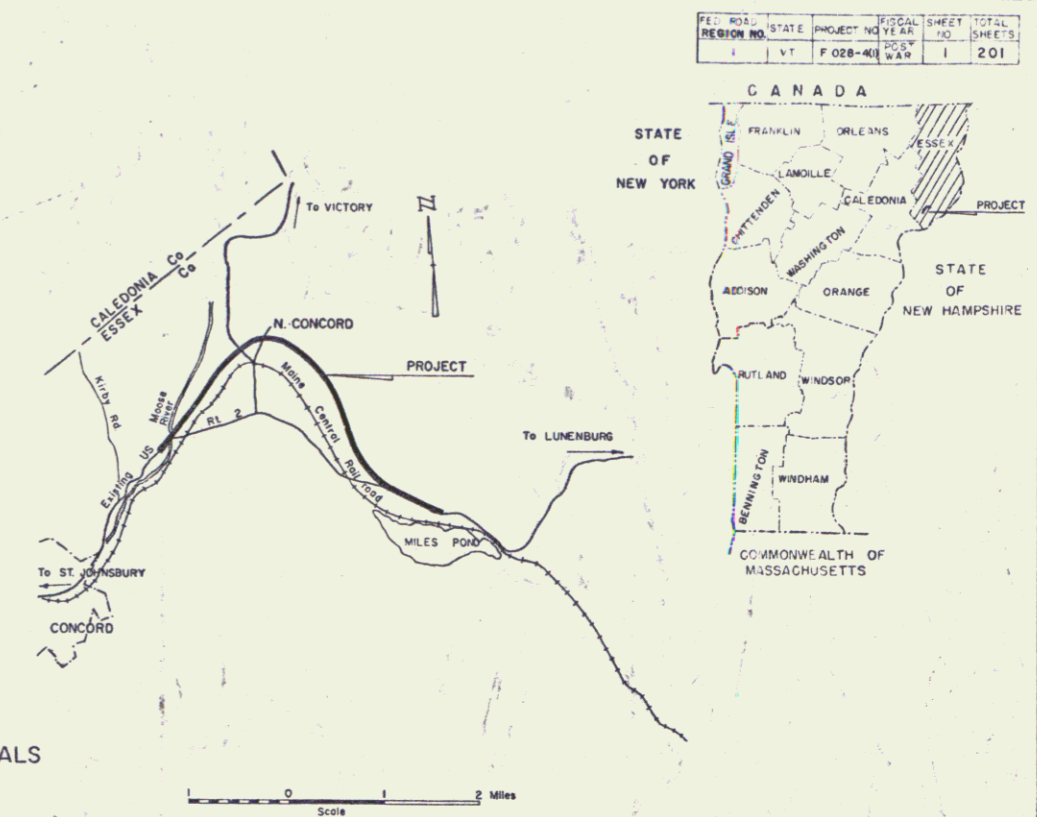
STATE OF VERMONT
 DEPARTMENT OF HIGHWAYS

PROPOSED IMPROVEMENT

FEDERAL AID PROJECT

PLAN AND PROFILE OF PROPOSED STATE HIGHWAY

TOWN OF CONCORD
 COUNTY OF ESSEX
 CONCORD - MILES POND ROAD
 VERMONT US ROUTE 2



DESIGN DESIGNATION
 ADT 1957 - 1360
 ADT 1980 - 2300
 DHV 1980 - 345
 D = 55%
 T = 14%
 V = 60 MPH

RIGHT-OF-WAY DIVISION
 TOWN FILE
 PERPETUAL
 Town of US 2
 (To Be Returned To R.O.W. Division)

NOTE: ANY FURTHER INFORMATION CONCERNING THIS PROJECT OR ANY OTHER PROJECTS MAY BE FOUND IN EITHER THE FIELD BOOKS OR THE ESTIMATE FILE.

PROJECT	CONCORD
NUMBER	F 028-4(1)
TYPE	3" Bit. Con. Pavement
CONTRACTOR	Olson Construction
LOCATION	See file
YEAR	
LENGTH	4.292 Miles
DATE	
TELEPHONE	
TRACES	
MEGDE	

CONCORD - OLSON CONSTRUCTION CORP. - MONTPELIER, VERMONT.
 RECORD PLANS - FRANK E. ALDRICH.
 CONTRACTOR - OLSON CONSTRUCTION CORP. - MONTPELIER, VERMONT.
 RES. ENG. - FRANK E. ALDRICH.
 INSPECTORS - W. BOND, D. FOOTE, H. MILES.
 RECORD PLANS - FRANK E. ALDRICH

SCALES

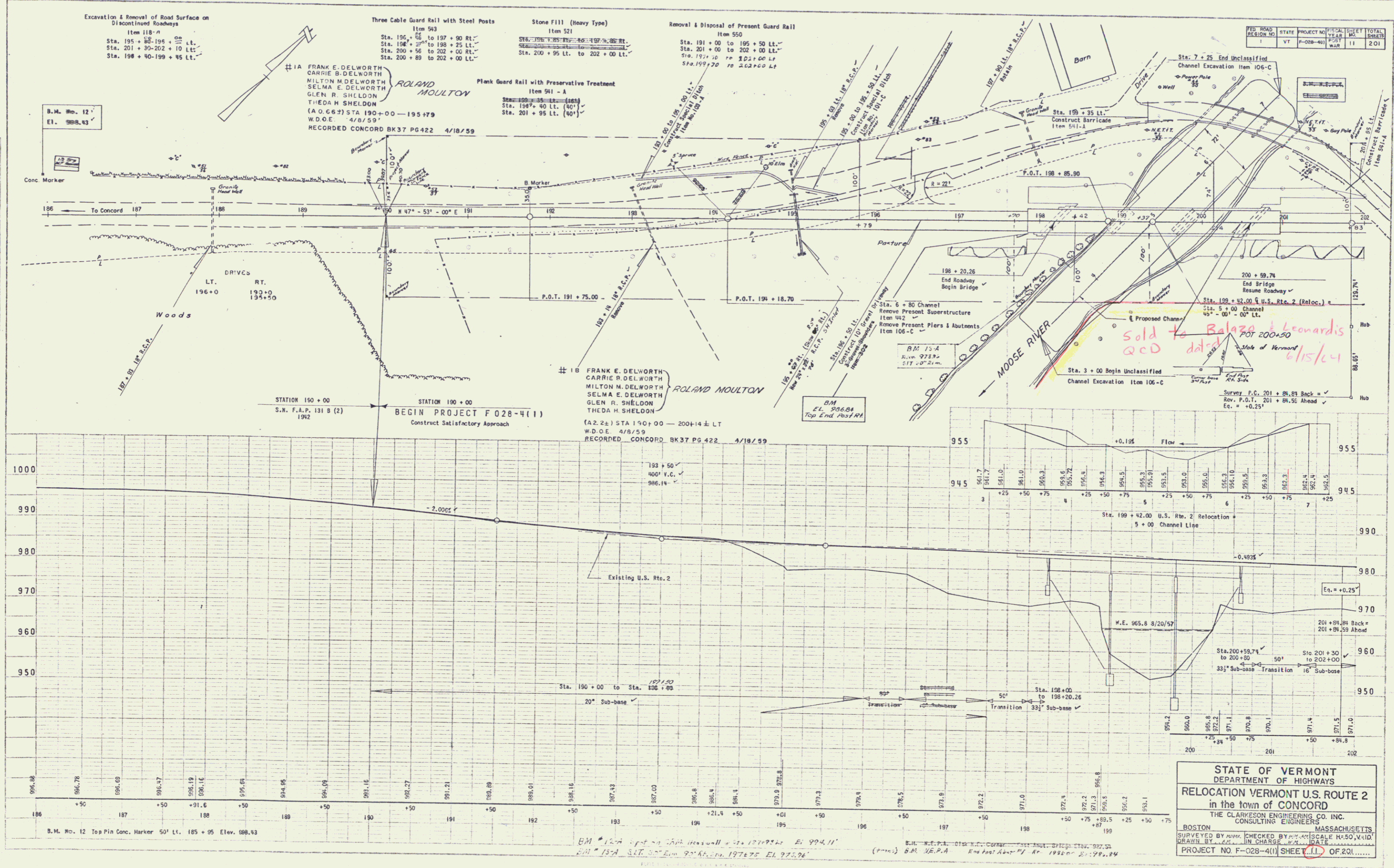
TITLE	1" = 1000'
TYPICAL	3/8" = 1'
PLAN	1" = 50'
PROFILE HORIZONTAL	1" = 10'
CROSS-SECTIONS	1" = 5'

THE CLARKESON ENGINEERING CO., INC.
 CONSULTING ENGINEERS
 BOSTON MASSACHUSETTS

APPROVED	DATE	APPROVED	DATE	APPROVED	DATE	APPROVED	DATE	APPROVED	DATE	APPROVED	DATE
<i>[Signature]</i>	3/5/1957	<i>[Signature]</i>	3/5/1957	<i>[Signature]</i>	12 JANUARY 1959	<i>[Signature]</i>	1/15/59	<i>[Signature]</i>	3/15/59		

DEPARTMENT OF COMMERCE
 BUREAU OF PUBLIC ROADS

PROJECT	F	NO.	028-4(1)
SHEET	1	OF	201 SHEETS



PLAN
 SCALE: 1" = 40'
 DATE: 4/18/59
 DRAWN BY: MONTGOMERY, A.
 CHECKED BY: MONTGOMERY, A.

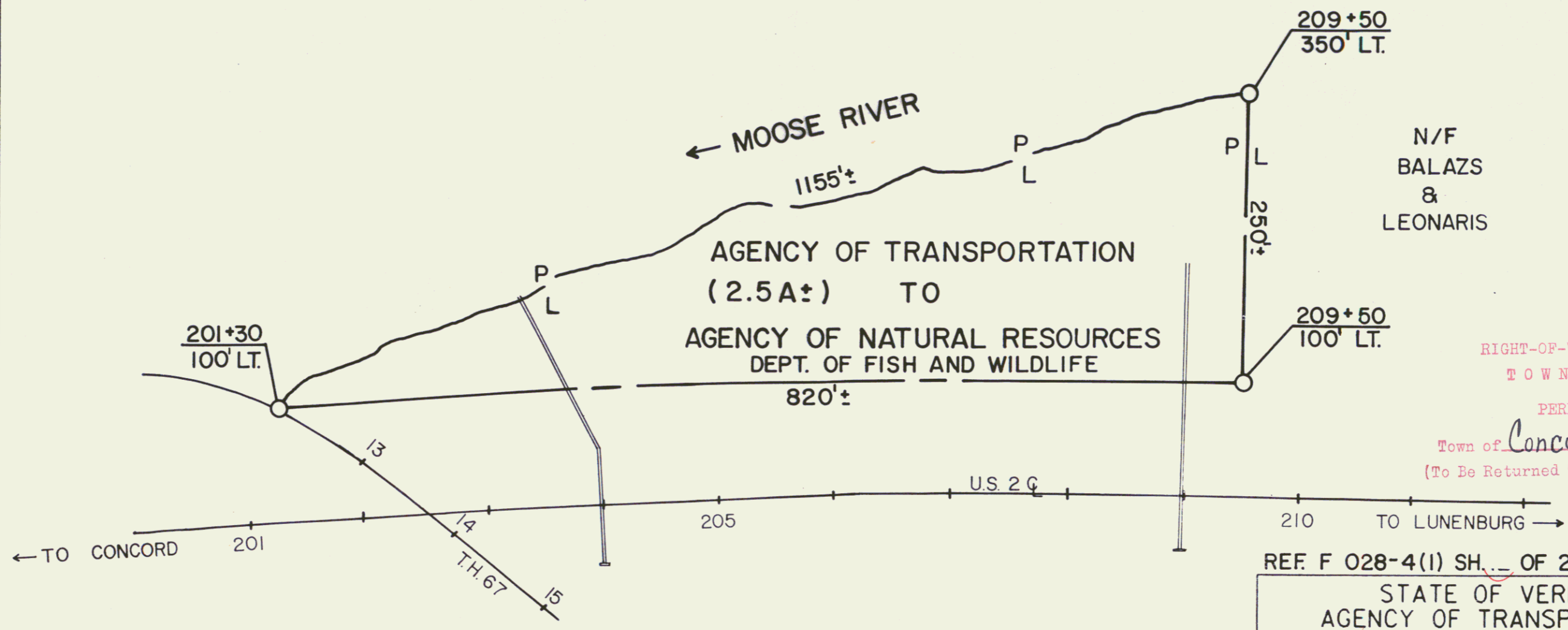
PROFILE
 SCALE: 1" = 40'
 DATE: 4/18/59
 DRAWN BY: MONTGOMERY, A.
 CHECKED BY: MONTGOMERY, A.

PROJECT NO.	STATE	TOWN	SHEET NO.	TOTAL SHEETS
F-028-41	VT	CONCORD	11	201

STATE OF VERMONT
 DEPARTMENT OF HIGHWAYS
RELOCATION VERMONT U.S. ROUTE 2
 in the town of CONCORD
 THE CLARKSON ENGINEERING CO. INC.
 CONSULTING ENGINEERS
 BOSTON MASSACHUSETTS
 SURVEYED BY: [Name] CHECKED BY: [Name] SCALE: H=50, V=25
 DRAWN BY: [Name] IN CHARGE: [Name] DATE: [Date]
 PROJECT NO. F-028-41 SHEET (11) OF 201

BEING A PART OF THE SAME LAND AND PREMISES
ACQUIRED BY THE STATE OF VERMONT FROM
CURTIS A. LANPHER BY WD DATED NOV. 1, 1956
AND RECORDED IN BK. 37 PG. 223, OF THE TOWN OF
CONCORD LAND RECORDS

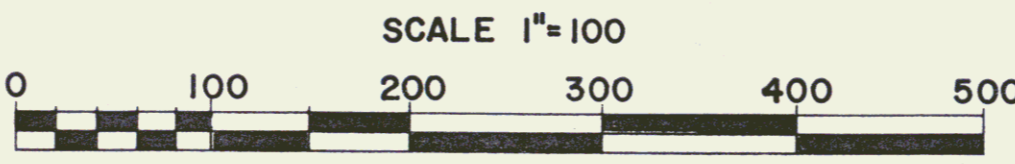
MP 0434



N/F
BALAZS
&
LEONARIS

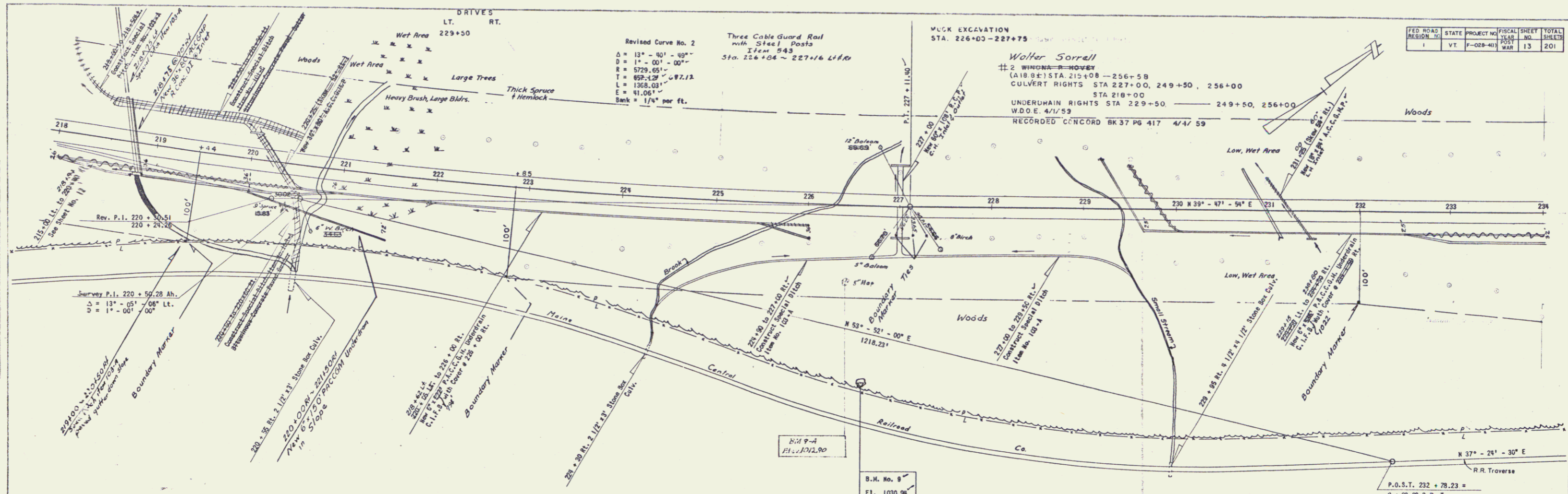
AGENCY OF TRANSPORTATION
(2.5A±) TO
AGENCY OF NATURAL RESOURCES
DEPT. OF FISH AND WILDLIFE

RIGHT-OF-WAY DIVISION
TOWN FILE
PERPETUAL
Town of Concord US 26 MM 4.307
(To Be Returned To R.O.W. Division)



REF F 028-4(1) SH. OF 20

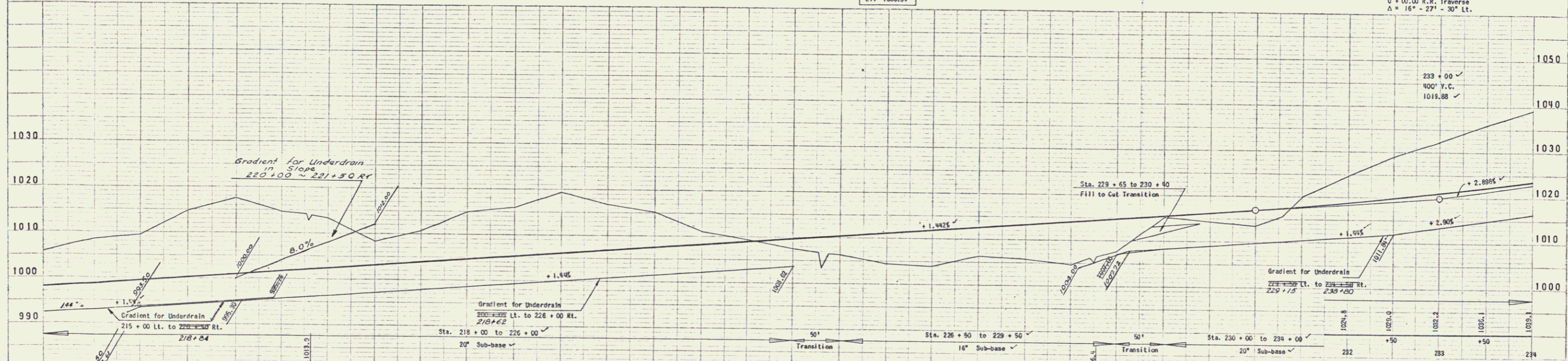
STATE OF VERMONT AGENCY OF TRANSPORTATION		
TOWN OF CONCORD		
12A		
APPROX. SCALE 1"=100	DATE 1/19/88	DRAWN BY A.S.J.



FED. ROAD DISTRICT	STATE	PROJECT NO.	FISCAL YEAR	SHEET NO.	TOTAL SHEETS
1	VT.	F-028-401	WAR	13	201

PLAN
 MORE
 SPITH
 MONTAIGNY, V.
 DATE 10/1/59

PLAN
 MORE
 SPITH
 MONTAIGNY, V.
 DATE 10/1/59



STATE OF VERMONT
 DEPARTMENT OF HIGHWAYS
RELOCATION VERMONT U.S. ROUTE 2
 in the town of CONCORD
 THE CLARKSON ENGINEERING CO. INC.
 CONSULTING ENGINEERS
 BOSTON MASSACHUSETTS
 SURVEYED BY [Name] CHECKED BY [Name] SCALE 1"=50' VERT.
 DRAWN BY [Name] IN CHARGE [Name] DATE [Date]
 PROJECT NO. F-028-401 SHEET 13 OF 201

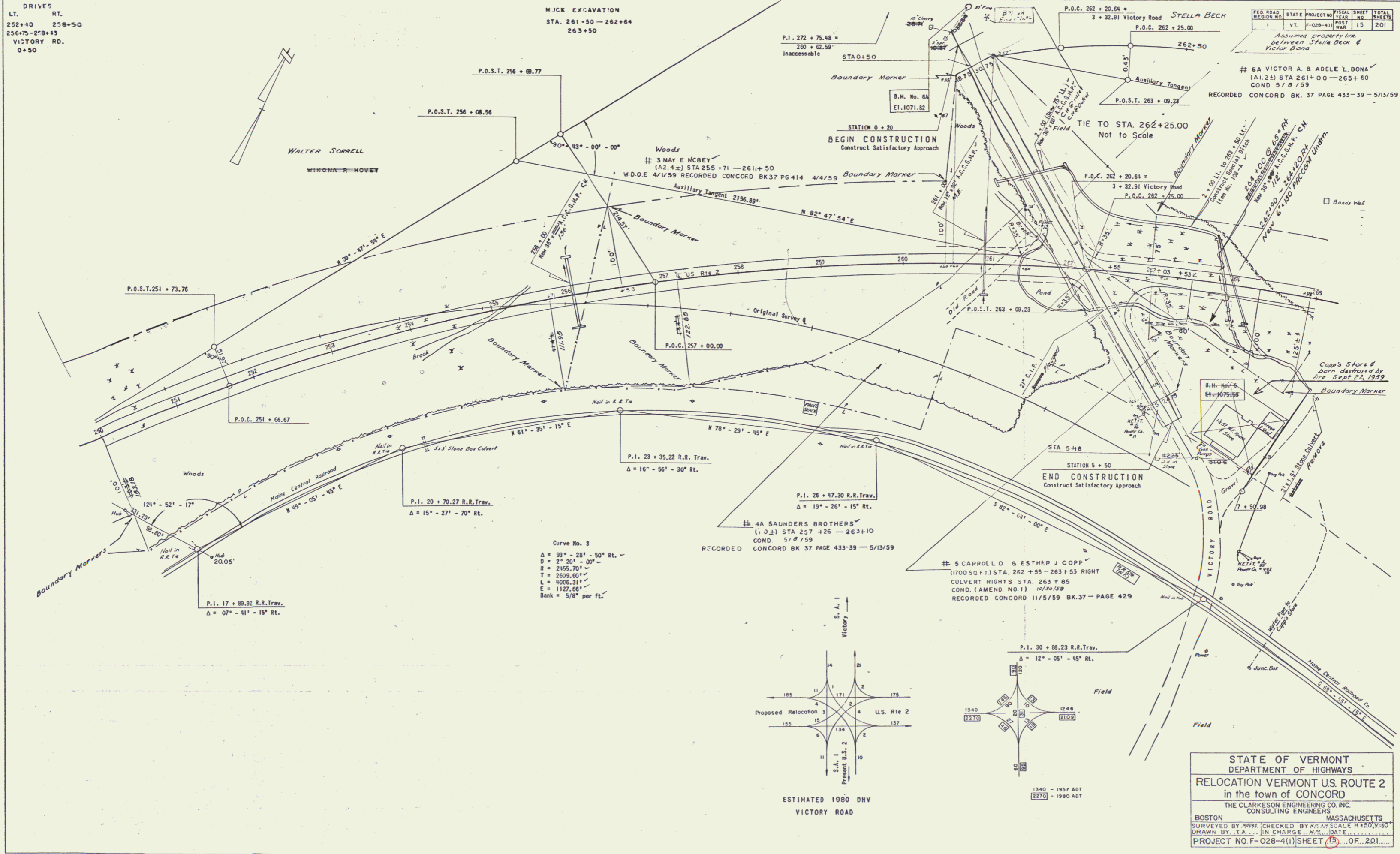
6

DRIVES
 LT. RT.
 252+40 258+50
 256+75-278+13
 VICTORY RD.
 0+50

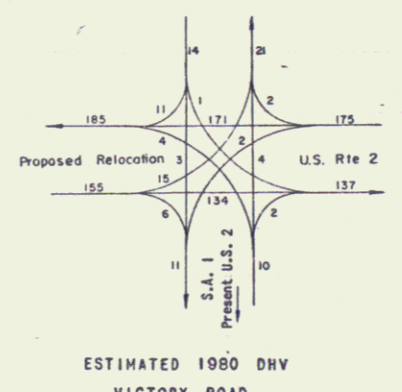
MJCK EXCAVATION
 STA. 261+50 - 262+64
 263+50

FED. ROAD DISTRICT	STATE PROJECT NO.	FISCAL YEAR	SHEET NO.	TOTAL SHEETS
1	VT F-028-4(1)	1957	15	201

Assumed Property Line
 between Stella Beck &
 Victor Dana
 # 6A VICTOR A. & ADELE L. BONA
 (A1.2) STA 261+00 - 265+60
 COND. 5/8/59
 RECORDED CONCORD BK. 37 PAGE 433-39 - 5/13/59



Curve No. 3
 $\Delta = 93^\circ - 28' - 50''$ RT.
 $D = 2^\circ - 20' - 00''$
 $R = 2455.70'$
 $T = 2609.60'$
 $L = 4006.31'$
 $E = 1127.66'$
 Bank = $5/8''$ per ft.

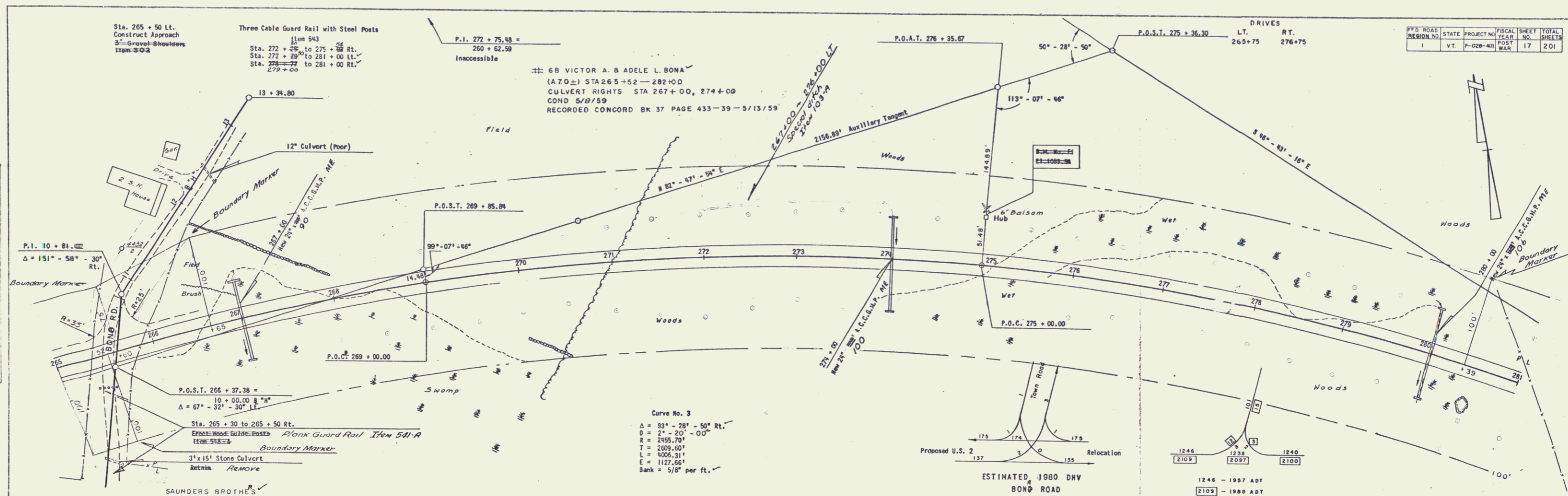


ESTIMATED 1980 DRY
 VICTORY ROAD

1340 - 1957 ADT
 1346 - 1980 ADT

STATE OF VERMONT
 DEPARTMENT OF HIGHWAYS
 RELOCATION VERMONT U.S. ROUTE 2
 in the town of CONCORD
 THE CLARKESON ENGINEERING CO., INC.
 CONSULTING ENGINEERS
 BOSTON MASSACHUSETTS
 SURVEYED BY [Name] CHECKED BY [Name] SCALE H+50, V+10
 DRAWN BY T.A. [Name] IN CHARGE DATE [Date]
 PROJECT NO F-028-4(1) SHEET (15) OF 201

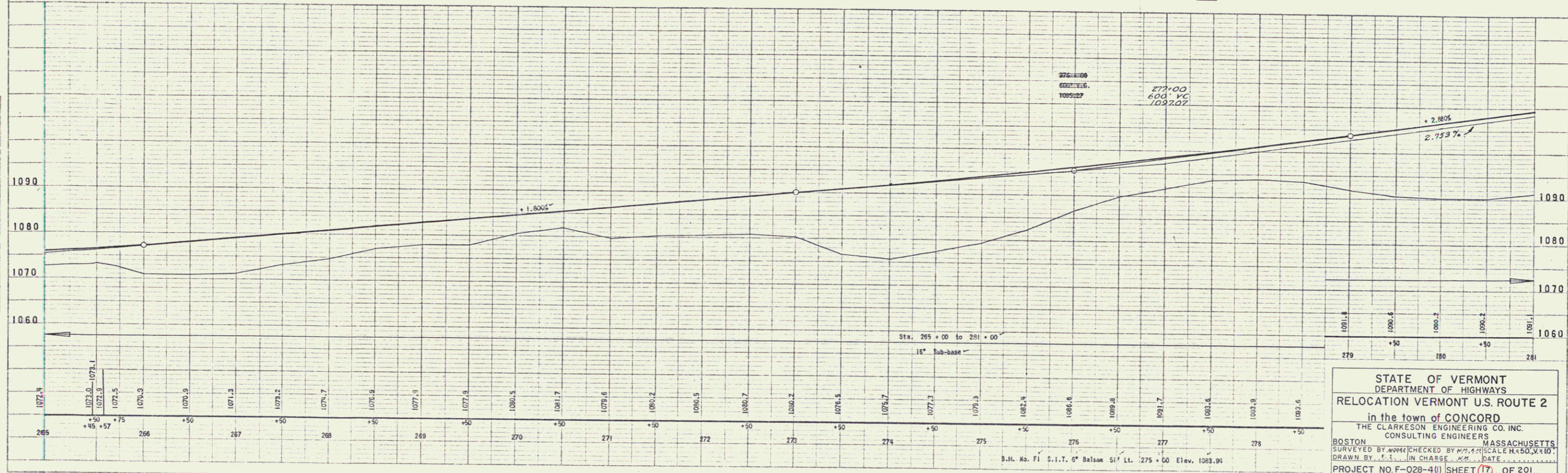
8



STATE	PROJECT NO.	FISCAL YEAR	SHEET NO.	TOTAL SHEETS
VT.	F-028-40	WAR	17	201

PLAN
 DATE: 10/11/59
 SCALE: AS SHOWN
 DRAWN BY: J. I. IN CHARGE
 CHECKED BY: M. J. IN CHARGE

PROFILE
 DATE: 10/11/59
 SCALE: AS SHOWN
 DRAWN BY: J. I. IN CHARGE
 CHECKED BY: M. J. IN CHARGE



STATE OF VERMONT
 DEPARTMENT OF HIGHWAYS
 RELOCATION VERMONT U.S. ROUTE 2
 in the town of CONCORD
 THE CLARKESON ENGINEERING CO. INC.
 CONSULTING ENGINEERS
 BOSTON MASSACHUSETTS
 SURVEYED BY: [Name] CHECKED BY: [Name] SCALE: H=50, V=10
 DRAWN BY: J. I. IN CHARGE DATE: 10/11/59
 PROJECT NO. F-028-40 SHEET 17 OF 201

PLATE 1 - PLAN PROFILE, S.P.F. & E. STAKING
 PRINTED & ISSUED BY THE STATE
 ENGINEERING BOARD

96

DRIVES
LT. 293+75

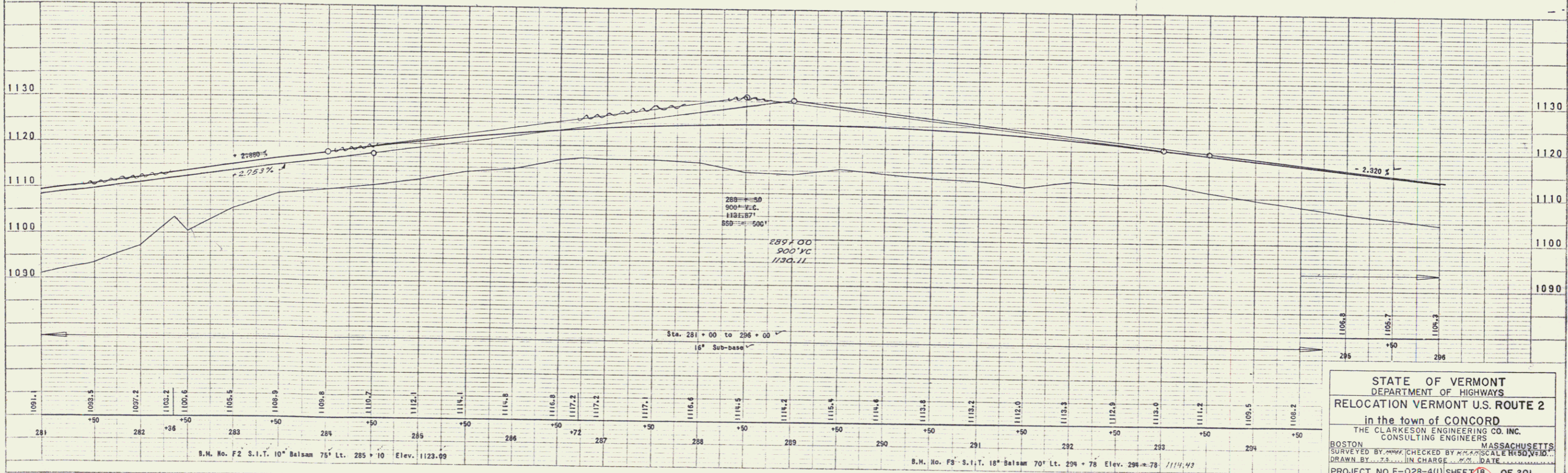
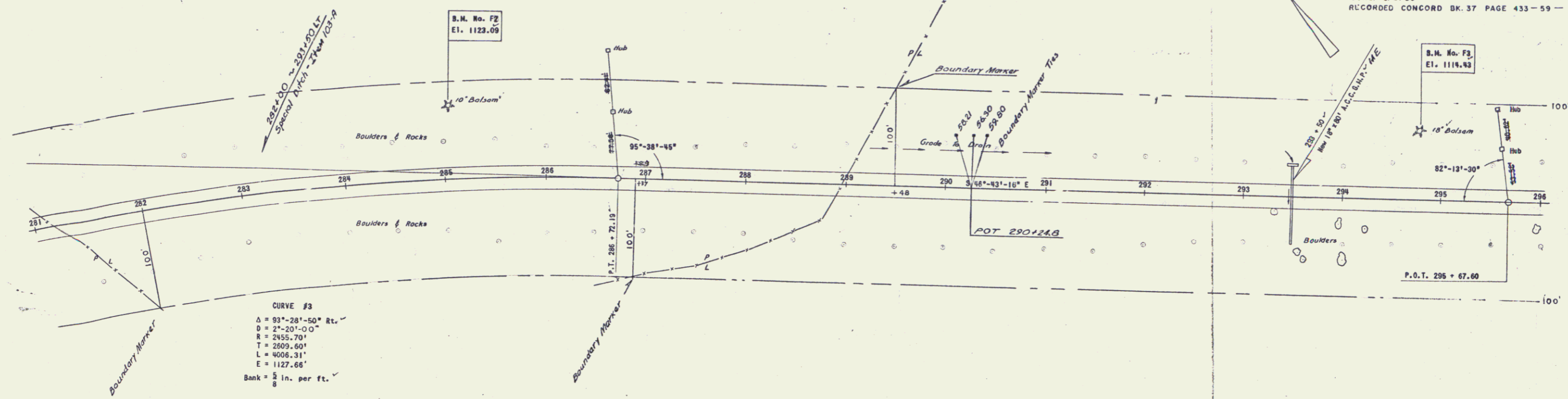
Three Cable Guard Rail With Steel Posts
Item - 543 x 24
Sta. 281+00 to 282+72 Lt.
Sta. 281+00 to 282+30 Rt.
282+50

#7 JOHN A. & JEANNE I. BONA
(A 3.5±) STA. 280+39 - 289+48
W.D. 4/2/59
RECORDED CONCORD BK 37 PG 420 4/10/59

FED. ROAD DISTRICT	STATE	PROJECT NO.	FISCAL YEAR	SHEET NO.	TOTAL SHEETS
1	VT.	F-028-4(1)	WAR	18	201

#48 SAUNDERS BROTHERS
(A 37.8±) STA. 266+89 - 362+70
CULVERT RIGHTS STA. 304+50, 313+50, 316+50, 332+00, 351+50,
UNDERDRAIN RIGHTS STA. 332+00, 350+00
COND. 5/8/59
RECORDED CONCORD BK 37 PAGE 433-59 - 5/13/59

PLAN	PROFILE	SECTION	DETAIL
1	1	1	1



STATE OF VERMONT
DEPARTMENT OF HIGHWAYS
RELOCATION VERMONT U.S. ROUTE 2
in the town of CONCORD
THE CLARKSON ENGINEERING CO. INC.
CONSULTING ENGINEERS
BOSTON MASSACHUSETTS
SURVEYED BY [Name] CHECKED BY [Name] DATE [Date]
DRAWN BY [Name] IN CHARGE [Name] DATE [Date]
PROJECT NO. F-028-4(1) SHEET 18 OF 201

PLATE 1 PLAN, PROFILE, D.P.R. & E. STANDARD
MUTUAL & FISHER CO., NEW YORK
M.A.P. CO. No. 348-10C

10

DRIVES
 LT. RT.
 309+00 30E-65

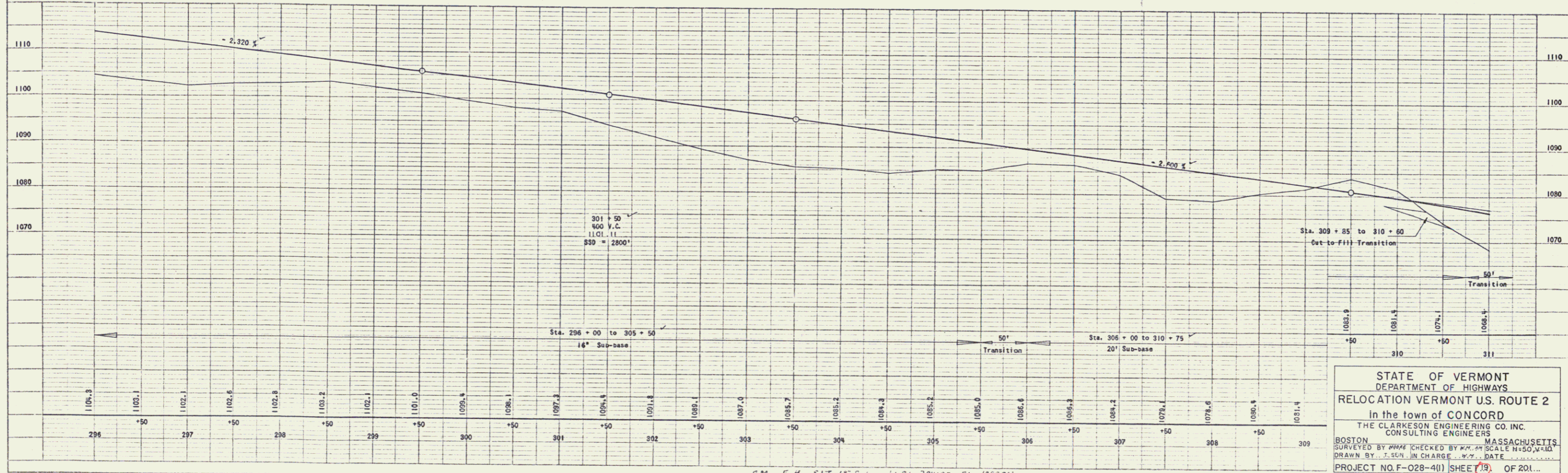
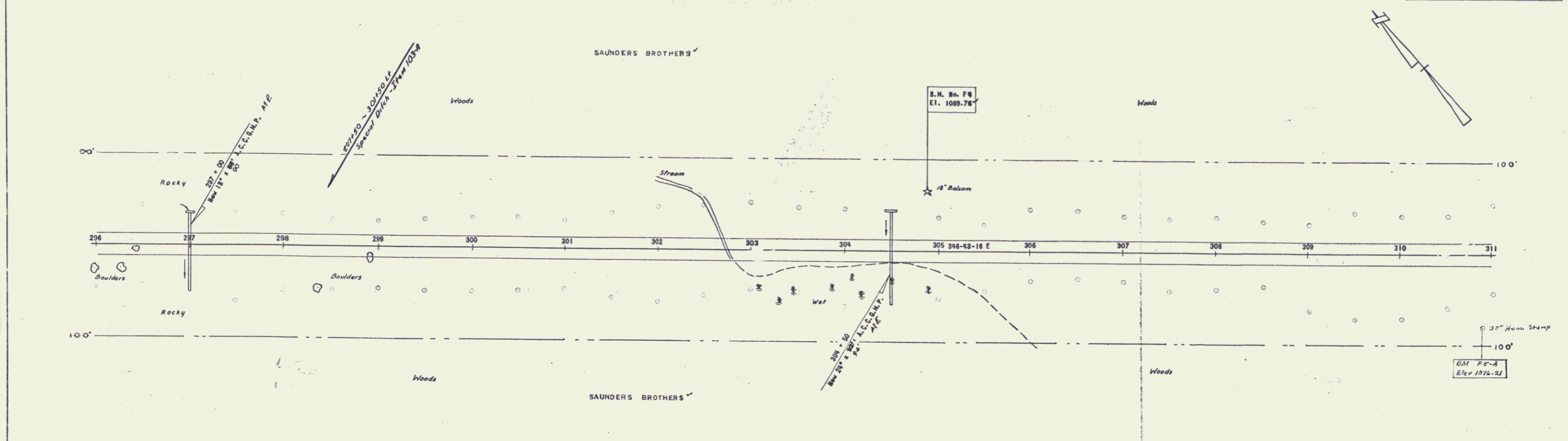
Three Cable Guard Rail With Steel Posts
 Item - 543
 STA. 296+00 to 305+50

MUCK EXCAVATION
 STA. 303+50 - 305+50

FED. ROAD DISTRICT NO.	STATE	PROJECT NO.	FISCAL YEAR	SHEET NO.	TOTAL SHEETS
1	VT	F-028-401	19	201	201

PLAN
 MOORE
 N. M.
 DATE: 10/1/50
 DRAWN BY: J. SEN
 CHECKED BY: W. J. SEN

PROFILE
 MOORE
 N. M.
 DATE: 10/1/50
 DRAWN BY: J. SEN
 CHECKED BY: W. J. SEN

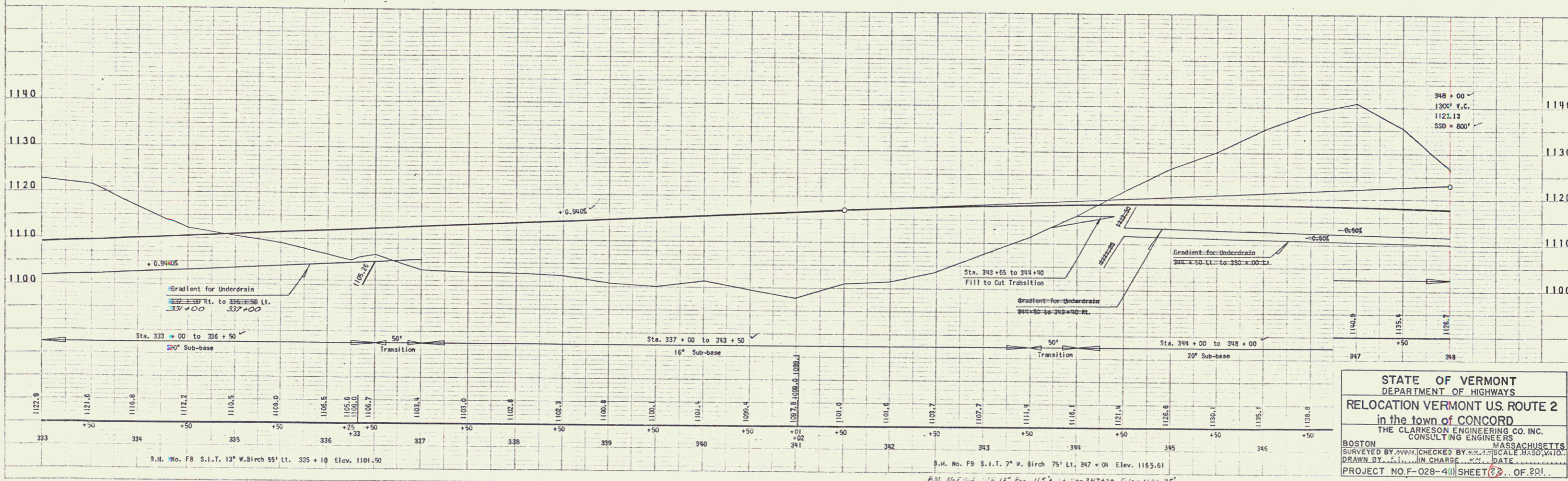
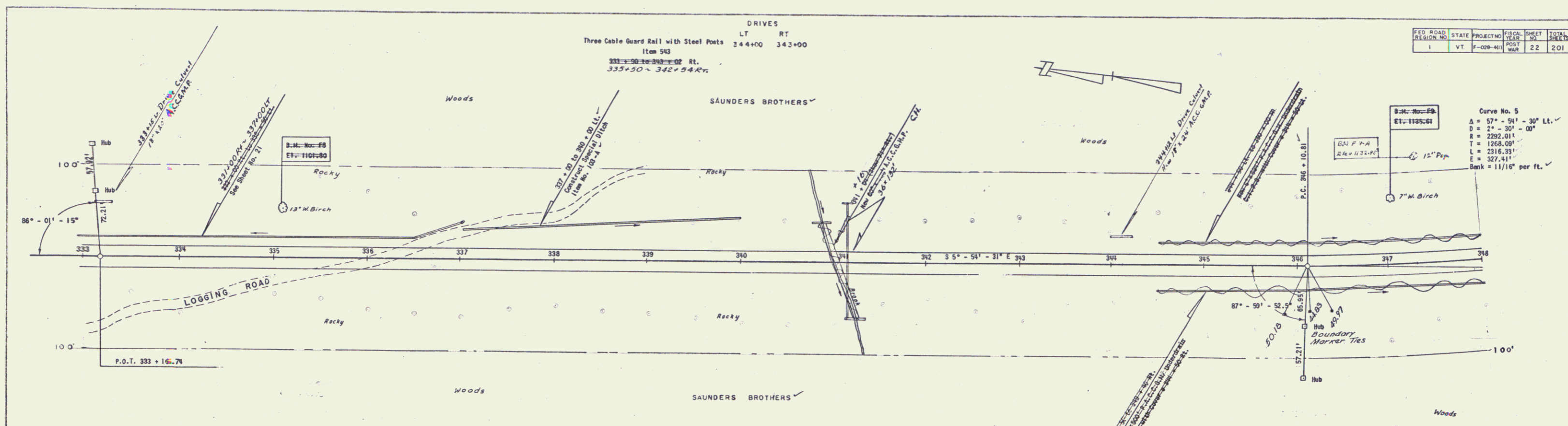


STATE OF VERMONT
 DEPARTMENT OF HIGHWAYS
 RELOCATION VERMONT U.S. ROUTE 2
 In the town of CONCORD
 THE CLARKESON ENGINEERING CO. INC.
 CONSULTING ENGINEERS
 BOSTON MASSACHUSETTS
 SURVEYED BY W. J. SEN CHECKED BY W. J. SEN SCALE H=50, V=10
 DRAWN BY J. SEN IN CHARGE W. J. SEN DATE 10/1/50
 PROJECT NO. F-028-401 (SHEET 19) OF 201

B.M. F. 8
 18" Iron Rod
 Sta. 304+95 Elev. 1089.74
 B.M. F. 8-A
 18" Iron Rod
 Sta. 310+90 Elev. 1076.21

PLAN
 MOORE
 A.M.
 11/15/50

MOORE
 A.M.
 11/15/50

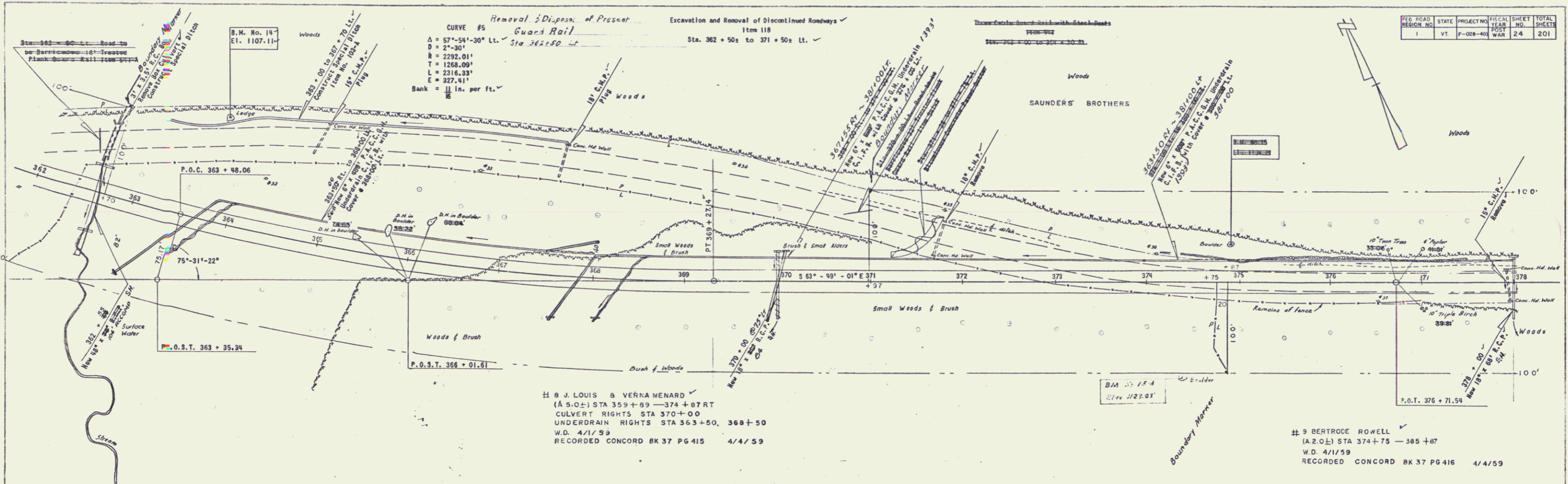


STATE OF VERMONT
 DEPARTMENT OF HIGHWAYS
 RELOCATION VERMONT U.S. ROUTE 2
 in the town of CONCORD
 THE CLARKSON ENGINEERING CO. INC.
 CONSULTING ENGINEERS
 BOSTON MASSACHUSETTS
 SURVEYED BY [] CHECKED BY [] SCALE BASED, V.A.D.
 DRAWN BY [] IN CHARGE DATE []
 PROJECT NO. F-028-4(1) SHEET 22 OF 201.

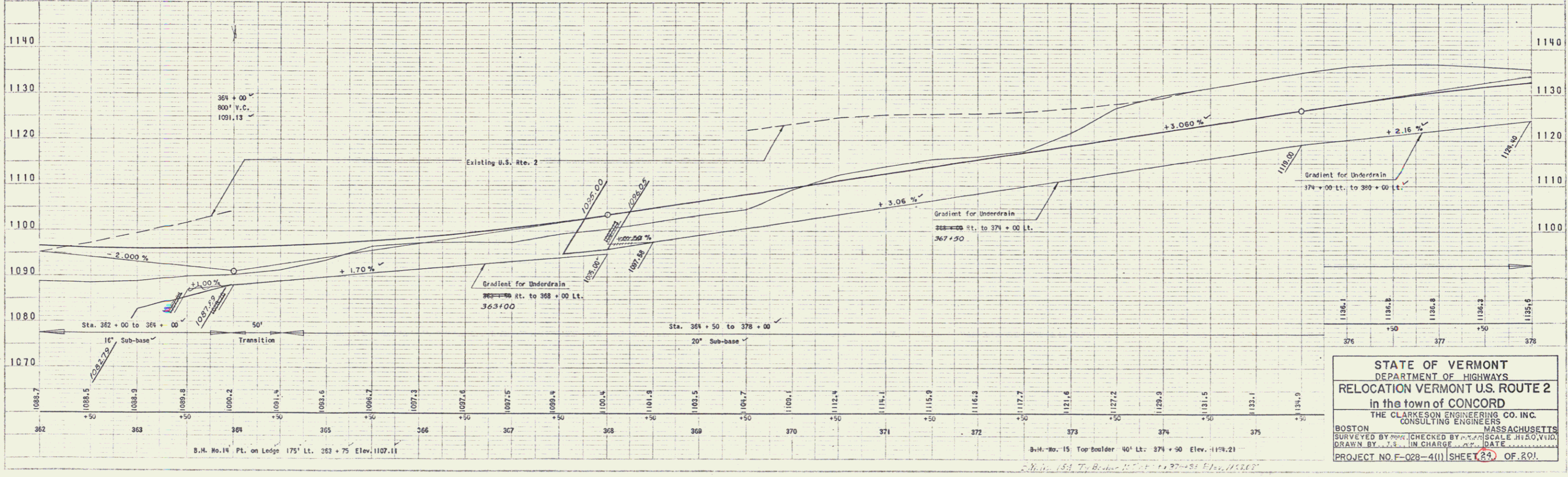
14

MOORE
SWIFT
MONTGOMERY
WATSON
A.
CONCORD, N.H.

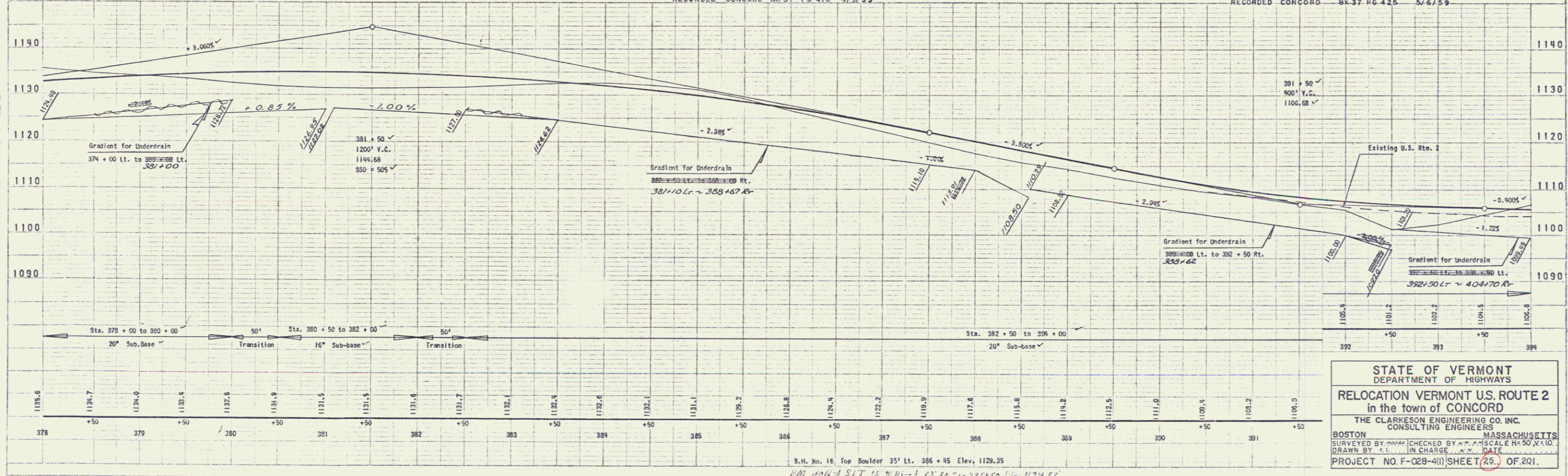
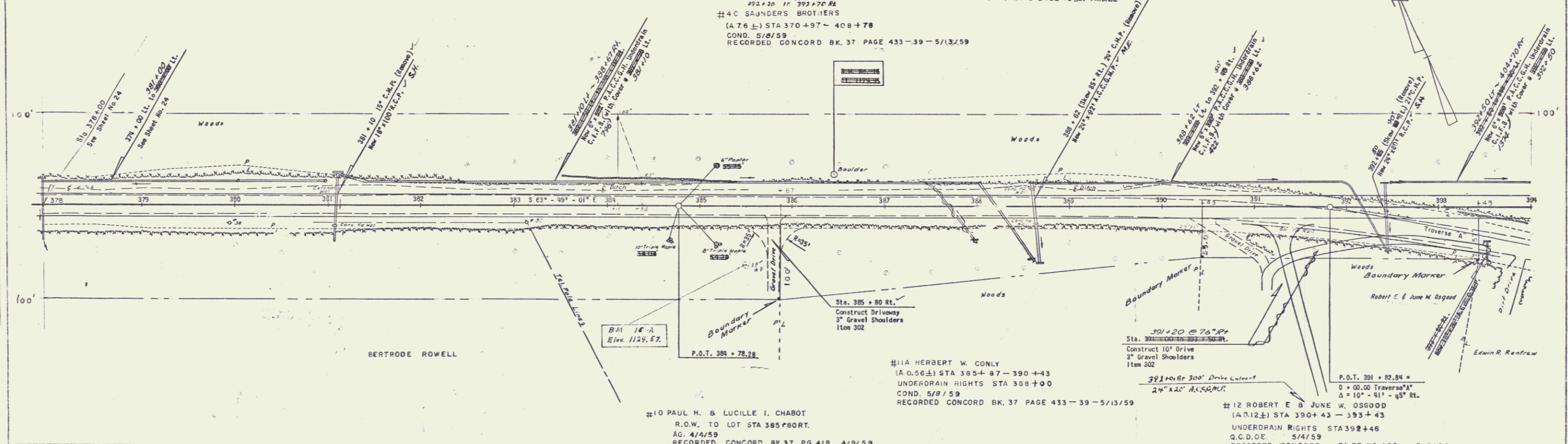
MOORE
SWIFT
MONTGOMERY
WATSON
A.
CONCORD, N.H.



FED. ROAD DISTRICT NO.	STATE	PROJECT NO.	SHEET NO.	TOTAL SHEETS
1	VT.	F-028-401	24	201

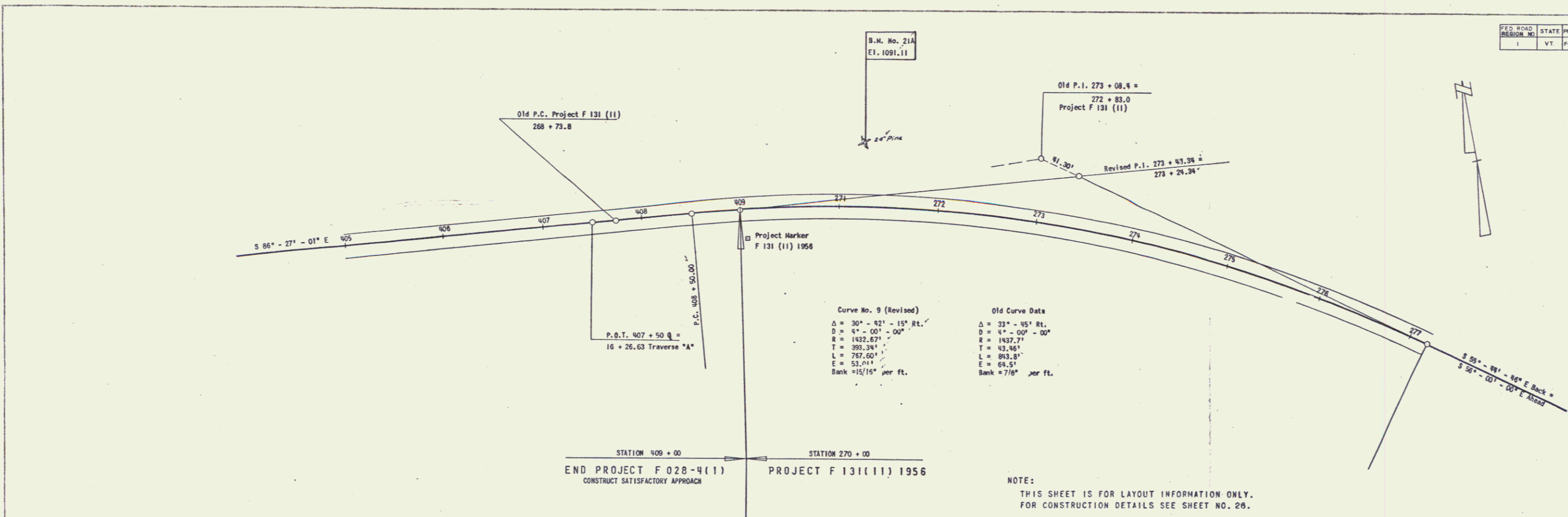


LT	RT	PARKING AREA
382+25	385+75	382+75-385+20 RT
388+75	391+20	



STATE OF VERMONT
DEPARTMENT OF HIGHWAYS
RELOCATION VERMONT U.S. ROUTE 2
in the town of CONCORD
THE CLARKSON ENGINEERING CO. INC.
CONSULTING ENGINEERS
BOSTON MASSACHUSETTS
SURVEYED BY [Name] CHECKED BY [Name] SCALE 1" = 50' HORIZ.
DRAWN BY [Name] IN CHARGE [Name] DATE [Date]
PROJECT NO. F-028-411 SHEET 25 OF 201

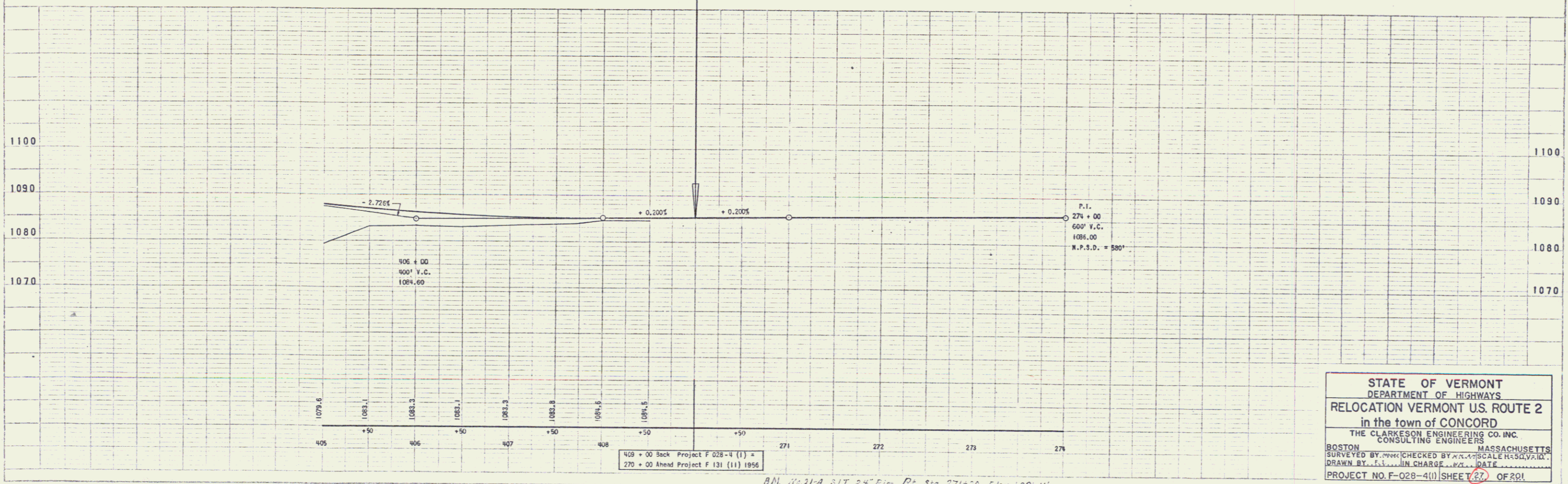
FED. ROAD DISTRICT NO.	STATE	PROJECT NO.	FISCAL YEAR	SHEET NO.	TOTAL SHEETS
1	VT	F-028-4(1)	MAR 27	201	



Curve No. 9 (Revised)
 $\Delta = 30^\circ - 42' - 15''$ Rt.
 $D = 0^\circ - 00' - 00''$
 $R = 1432.67'$
 $T = 393.34'$
 $L = 767.60'$
 $E = 53.21'$
 Bank = $15/16''$ per ft.

Old Curve Data
 $\Delta = 33^\circ - 45'$ Rt.
 $D = 0^\circ - 00' - 00''$
 $R = 1432.77'$
 $T = 42.94'$
 $L = 843.8'$
 $E = 64.5'$
 Bank = $7/8''$ per ft.

NOTE:
 THIS SHEET IS FOR LAYOUT INFORMATION ONLY.
 FOR CONSTRUCTION DETAILS SEE SHEET NO. 26.



MOORE
 A. M. M.
 A. M. M.
 A. M. M.

MOORE
 A. M. M.
 A. M. M.
 A. M. M.

STATE OF VERMONT
 DEPARTMENT OF HIGHWAYS
 RELOCATION VERMONT U.S. ROUTE 2
 in the town of CONCORD
 THE CLARKSON ENGINEERING CO. INC.
 CONSULTING ENGINEERS
 BOSTON MASSACHUSETTS
 SURVEYED BY: [Signature] CHECKED BY: [Signature] SCALE: H.S. & V.L. 1" = 40'
 DRAWN BY: [Signature] IN CHARGE: [Signature] DATE: [Date]
 PROJECT NO. F-028-4(1) SHEET 27 OF 201

B.M. No. 214 E1. 1091.11
 P.L. 271 + 00
 P.L. 272 + 00
 P.L. 273 + 00
 P.L. 274 + 00