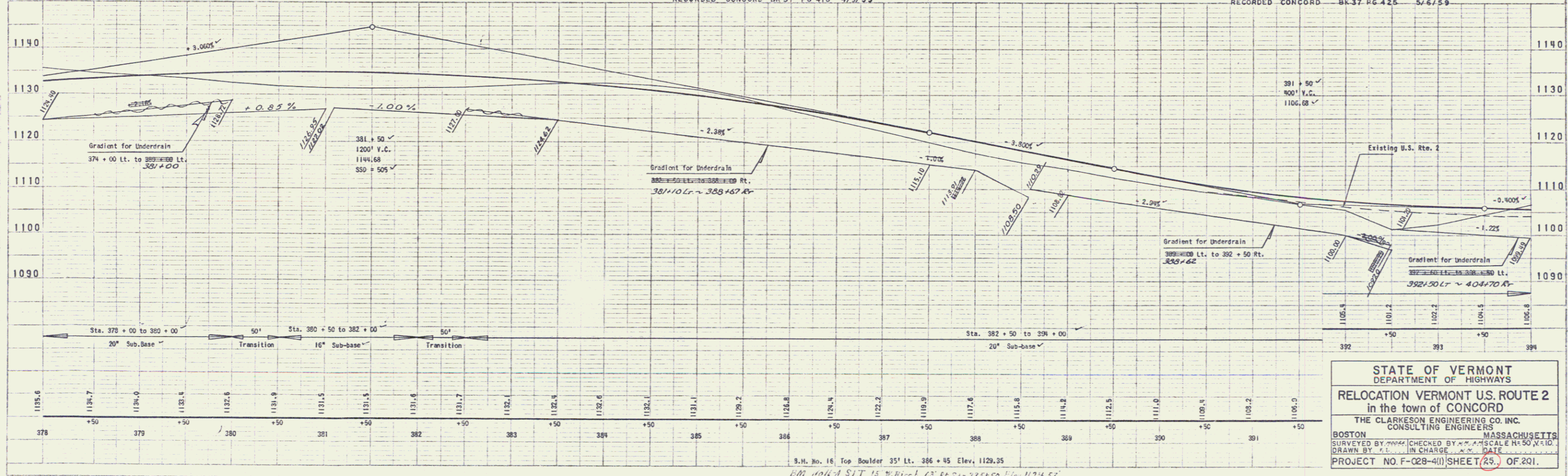
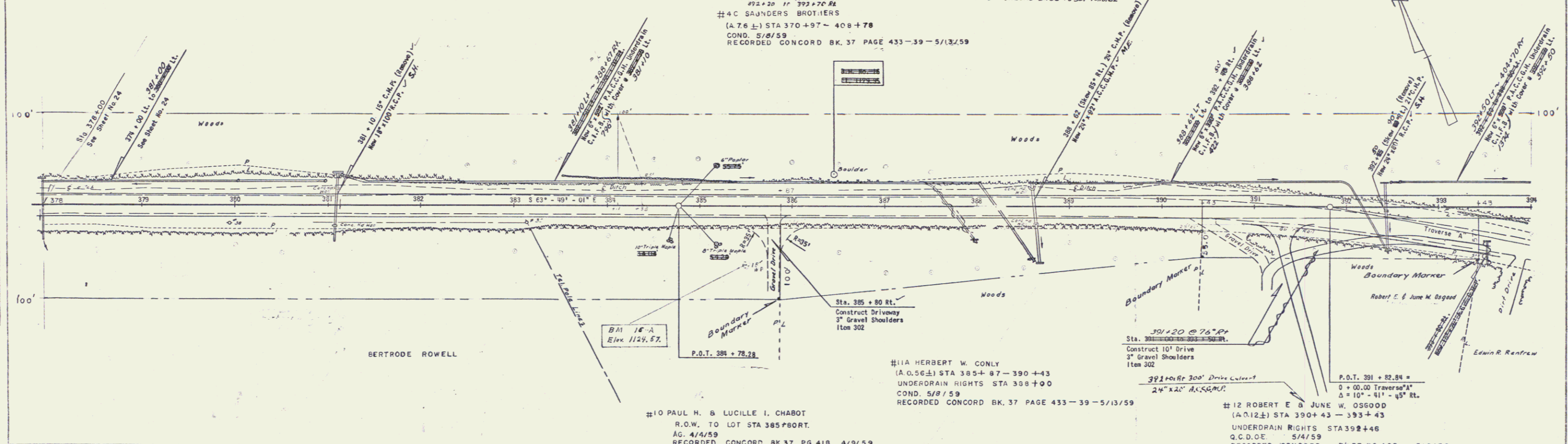


LT	RT	PARKING AREA
382+25	385+75	382+75-385+20 RT
388+75	391+20	



STATE OF VERMONT
DEPARTMENT OF HIGHWAYS
RELOCATION VERMONT U.S. ROUTE 2
in the town of CONCORD
THE CLARKSON ENGINEERING CO. INC.
CONSULTING ENGINEERS
BOSTON MASSACHUSETTS
SURVEYED BY [Name] CHECKED BY [Name] SCALE 1"=50' HORIZ.
DRAWN BY [Name] IN CHARGE [Name] DATE [Date]
PROJECT NO. F-028-411 SHEET 25 OF 201