

DRIVES  
LT. 293+75

Three Cable Guard Rail With Steel Posts  
Item - 543 x 74  
Sta. 281+00 to 282+72 Lt.  
Sta. 281+00 to 282+30 Rt.  
282+50

# 7 JOHN A. & JEANNE I BONA  
(A 3.5±) STA. 280+39 - 289+48  
W.D. 4/2/59  
RECORDED CONCORD BK 37 PG 420 4/10/59

FED. ROAD DISTRICT	STATE	PROJECT NO.	FISCAL YEAR	SHEET NO.	TOTAL SHEETS
1	VT.	F-028-4(1)	WAR	18	201

# 48 SAUNDERS BROTHERS  
(A 37.8±) STA. 266+89 - 362+70  
CULVERT RIGHTS STA. 304+50, 313+50, 316+50, 332+00, 351+50,  
UNDERDRAIN RIGHTS STA. 332+00, 350+00  
COND. 5/8/59  
RECORDED CONCORD BK 37 PAGE 433-59 - 5/13/59

PLAN	PROFILE	SECTION	DETAIL
1	1	1	1

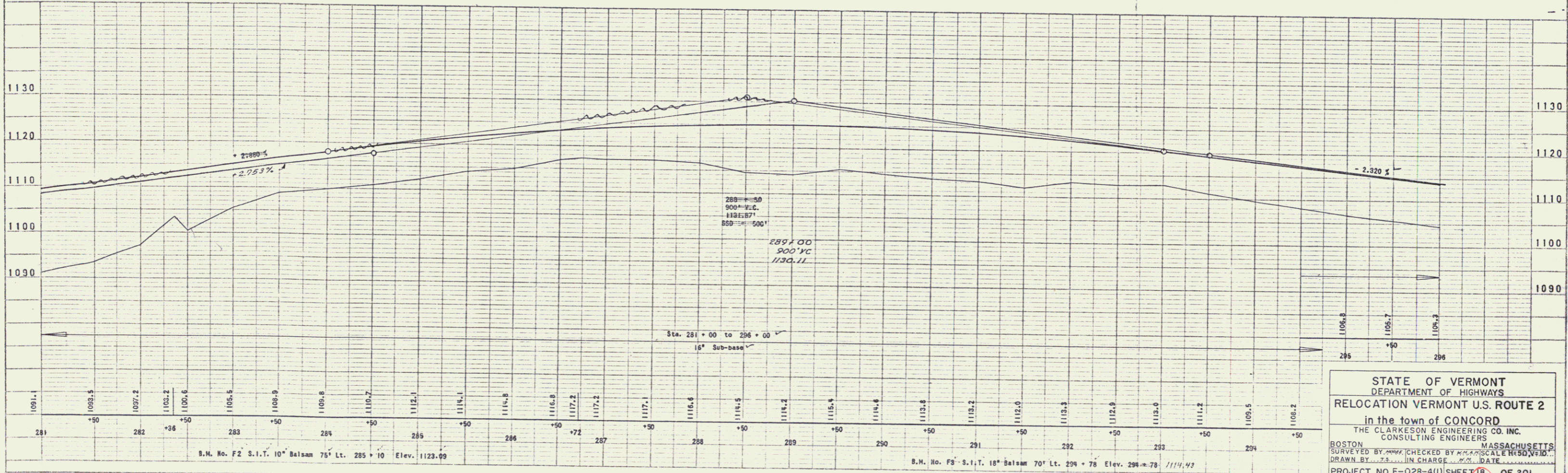
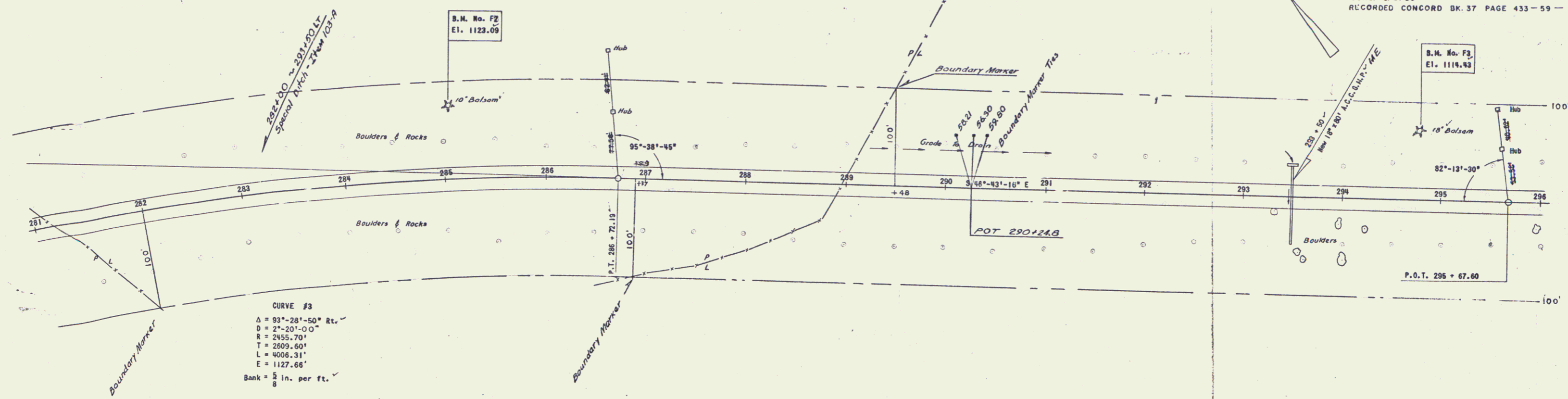


PLATE 1 PLAN, PROFILE, D.P.R. & E. STANDARD  
 METZGER & FISHER CO., NEW YORK  
 1/4" = 1' PLAN  
 1" = 10' PROFILE

10