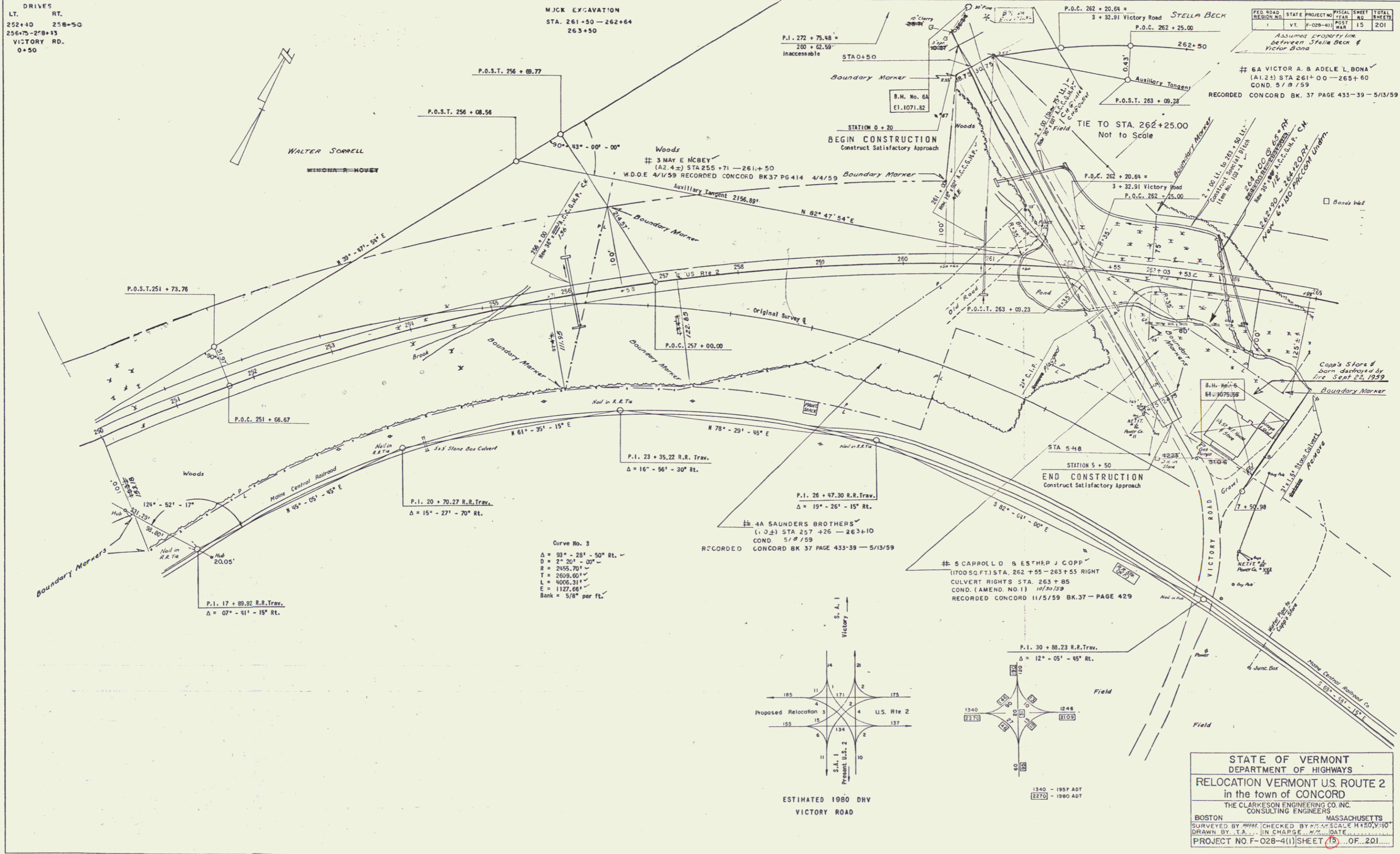


DRIVES
 LT. RT.
 252+40 258+50
 256+75-278+13
 VICTORY RD.
 0+50

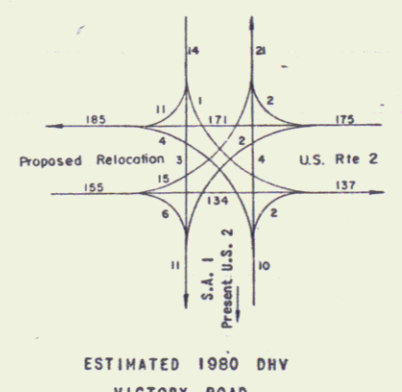
MJCK EXCAVATION
 STA. 261+50 - 262+64
 263+50

FED. ROAD DISTRICT	STATE PROJECT NO.	SHEET NO.	TOTAL SHEETS
VT	F-028-4(1)	15	201

Assumed Property Line
 between Stella Beck &
 Victor Dana
 # 6A VICTOR A. & ADELE L. BONA
 (A1.2) STA 261+00 - 265+60
 COND. 5/8/59
 RECORDED CONCORD BK. 37 PAGE 433-39 - 5/13/59



Curve No. 3
 $\Delta = 93^\circ - 28' - 50''$ RT.
 $D = 2^\circ - 20' - 00''$
 $R = 2455.70'$
 $T = 2609.60'$
 $L = 4006.31'$
 $E = 1127.66'$
 Bank = $5/8''$ per ft.



ESTIMATED 1980 DHV
 VICTORY ROAD

1340 - 1957 ADT
 1370 - 1980 ADT

STATE OF VERMONT
 DEPARTMENT OF HIGHWAYS
 RELOCATION VERMONT U.S. ROUTE 2
 in the town of CONCORD
 THE CLARKESON ENGINEERING CO., INC.
 CONSULTING ENGINEERS
 BOSTON MASSACHUSETTS
 SURVEYED BY [Name] CHECKED BY [Name] SCALE H+50, V+10
 DRAWN BY T.A. [Name] DATE [Date]
 PROJECT NO. F-028-4(1) SHEET (15) OF 201

8