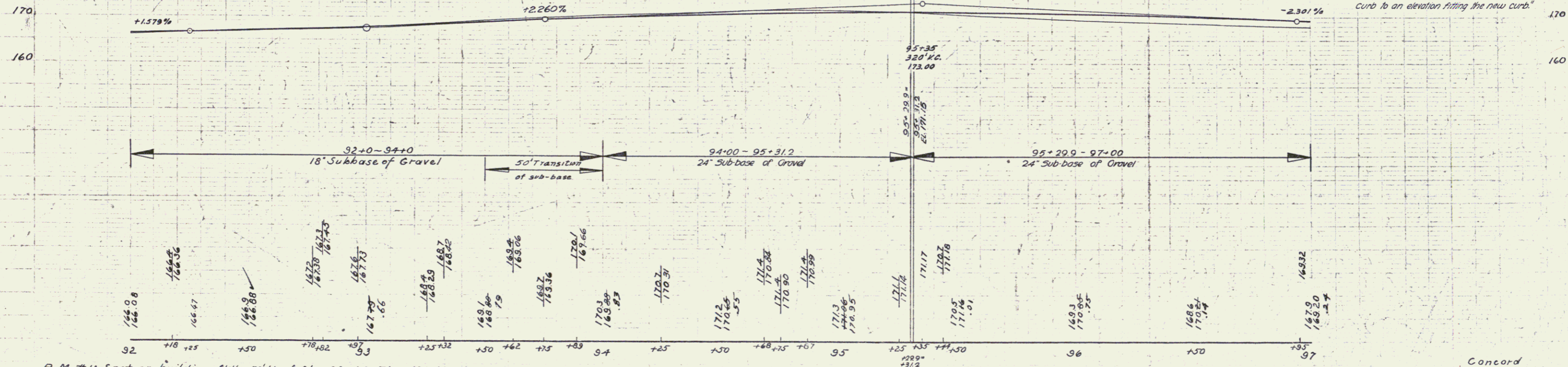
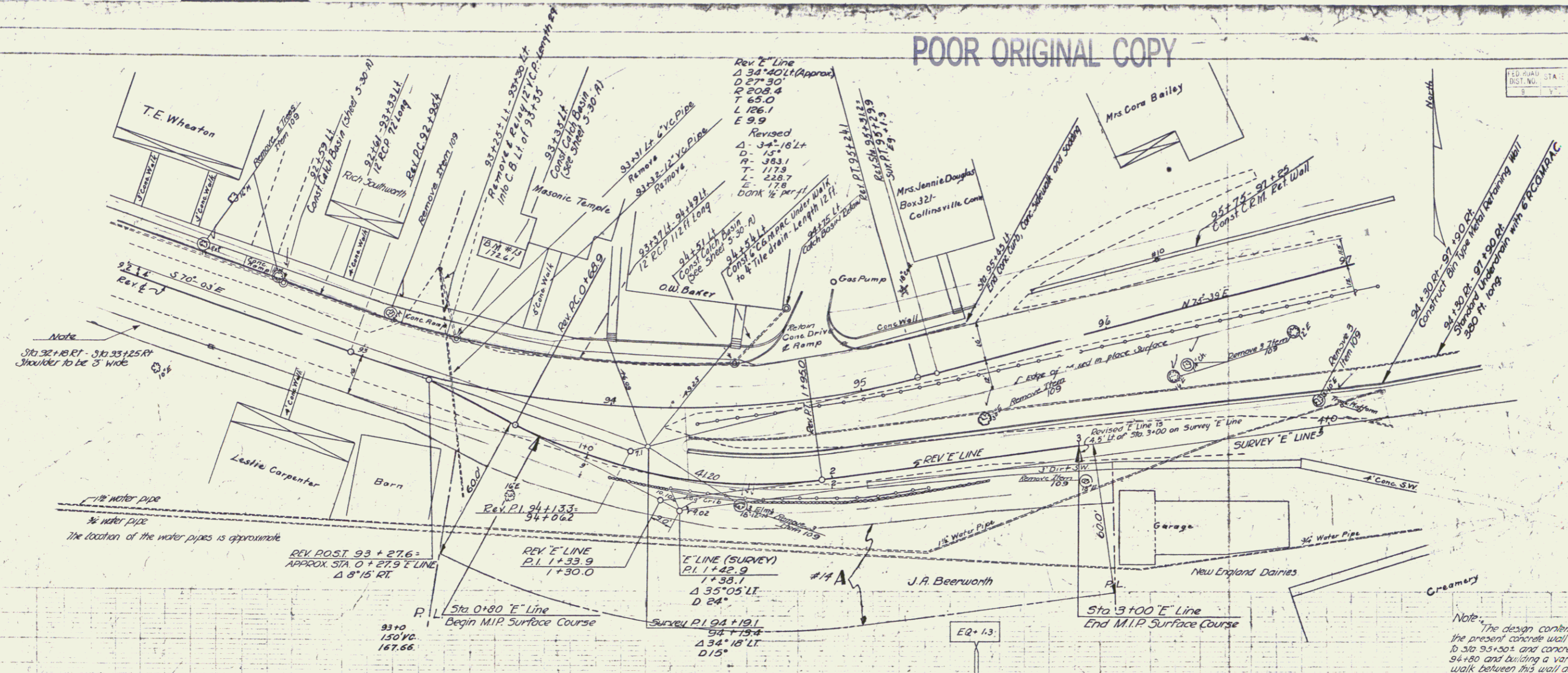


POOR ORIGINAL COPY

ED. ROAD DIST. NO.	STA.	FR.	TO.	TOTAL SHEETS
	92+00	97+00	97+00	99
F31(2) 1946 18				99



B.M. #13 Spot on building f'd'n S'W of Sta 93+44. Elev. 172.61

Concord Series N6F31-2J Sheet 18 of 99