

INDEX OF SHEETS

SHEET NO.	TITLE PAGE
1	TITLE PAGE
2	TYPICAL CROSS-SECTION OF IMPROVEMENT ² CRUSHED GRAVEL MIXED IN PLACE SURFACE COURSE, ITEM 25, WITH REFINED TAR, ITEM 30.
3	BANKING AND WIDENING TABLES
4	PLAN AND PROFILE
5	STANDARD STRUCTURE SHEET S-28 PIPE CULVERTS
6	" " " S-30 GUARD RAIL
7	" " " S-31 BOUNDARY MARKERS
8	" " " S-40 BARRICADES SIGNS AND LIGHTS
9	" " " S-41 ROUNDING OF SLOPES
10-14	CROSS SECTIONS

STANDARD STRUCTURE SHEETS APPROVED
BY THE CHIEF ENGINEER V.S.H.D.

S-28	APRIL 26, 1941
S-30	MAY 12, 1941
S-40	DEC. 18, 1945

STATE OF VERMONT
STATE HIGHWAY DEPARTMENT

PLAN AND PROFILE OF PROPOSED
STATE HIGHWAY

FEDERAL AID PROJECT

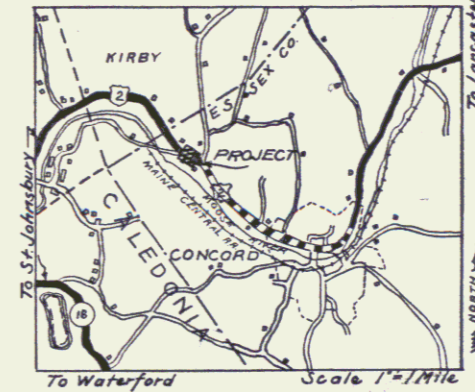
TOWN OF CONCORD Pin# 99R151
ROUTE U.S. 2

ST. JOHNSBURY, VT.-LANCASTER, N.H. ROAD

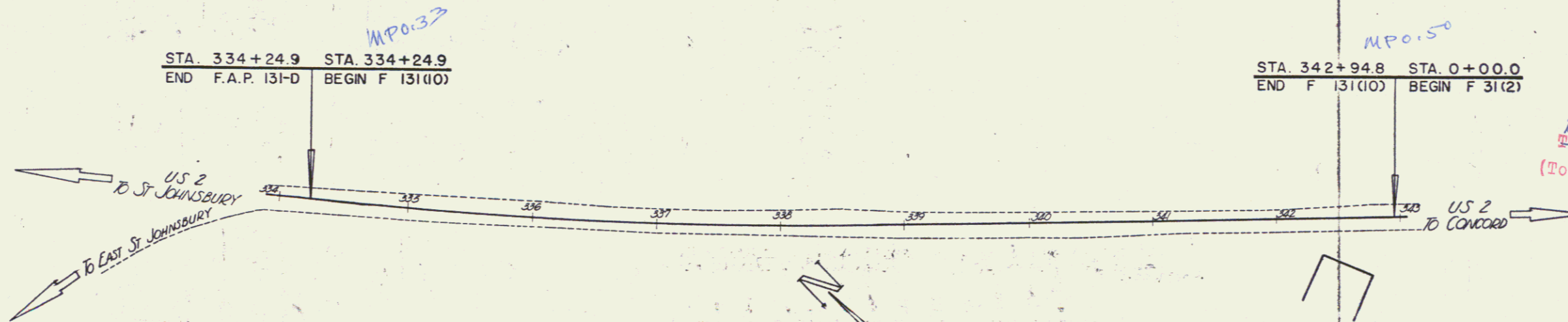
BEGINNING AT A POINT 0.338 MILES SOUTHEAST OF THE KIRBY-CONCORD TOWN LINE
AND EXTENDING SOUTHEASTERLY 0.165 MILES.

LENGTH OF PROJECT: 869.9 FEET=0.165 MILES

FED. ROAD DIST. NO.	STATE	PROJ. NO.	FISCAL YEAR	SHEET NO.	TOTAL SHEETS
9	Vt.	131(10)	1946	1	14



RECORD PLANS



RIGHT-OF-WAY DIVISION
TOWN FILE
PERPETUAL
Town of U.S. 2
(To Be Returned To R.O.W. Division)

APPROVED: *[Signature]*
July 29, 1946
COMMISSIONER OF HIGHWAYS
SUBMITTED BY ORDER OF THE STATE HIGHWAY BOARD

- COUNTY LINE
- TOWN LINE
- FENCE LINE
- STONE WALL
- UNFENCED PROPERTY
- GUARD RAIL
- TRAVELED WAY
- RAILROAD
- RETAINING WALL
- CENTER LINE
- SURVEY LINE
- CULVERT
- DROP INLET
- TROLLEY POLE
- POWER POLE
- TELEPHONE POLE
- TREES
- HEDGE

- GROUND ELEVATION DATUM
- GRADE ELEVATION DATUM

- CURVE DATA
- DEFLECTION ANGLE..... Δ
 - DEGREE OF CURVE..... D
 - RADIUS OF CURVE..... R
 - TANGENT DISTANCE..... T
 - LENGTH OF CURVE..... L
 - EXTERNAL DISTANCE..... E
 - POINT OF INTERSECTION..... P. I.
 - POINT OF CURVE..... P. C.
 - POINT OF TANGENT..... P. T.
 - POINT ON TANGENT..... P. O. T.

- SCALES
- TITLE 1"=50'
 - TYPICAL 1"=2'
 - PLAN 1"=50'
 - PROFILE HORIZONTAL 1"=50'
 - PROFILE VERTICAL 1"=10'
 - CROSS SECTIONS 1"=5'

THESE PLANS ARE SUBJECT TO SUCH REVISIONS AS MAY BE REQUIRED BY THE PUBLIC ROADS ADMINISTRATION OR THE COMMISSIONER OF HIGHWAYS.
CONSTRUCTION IS TO BE CARRIED ON IN ACCORDANCE WITH THE PLANS AND THE STANDARD ROAD AND BRIDGE SPECIFICATIONS OF 1936 AS APPROVED DECEMBER 28TH, 1936 BY THE PUBLIC ROADS ADMINISTRATION, INCLUDING ALL SUBSEQUENT APPROVED REVISIONS AND SUCH REVISED SPECIFICATIONS AND SPECIAL PROVISIONS AS ARE SUBMITTED WITH THE PLANS.

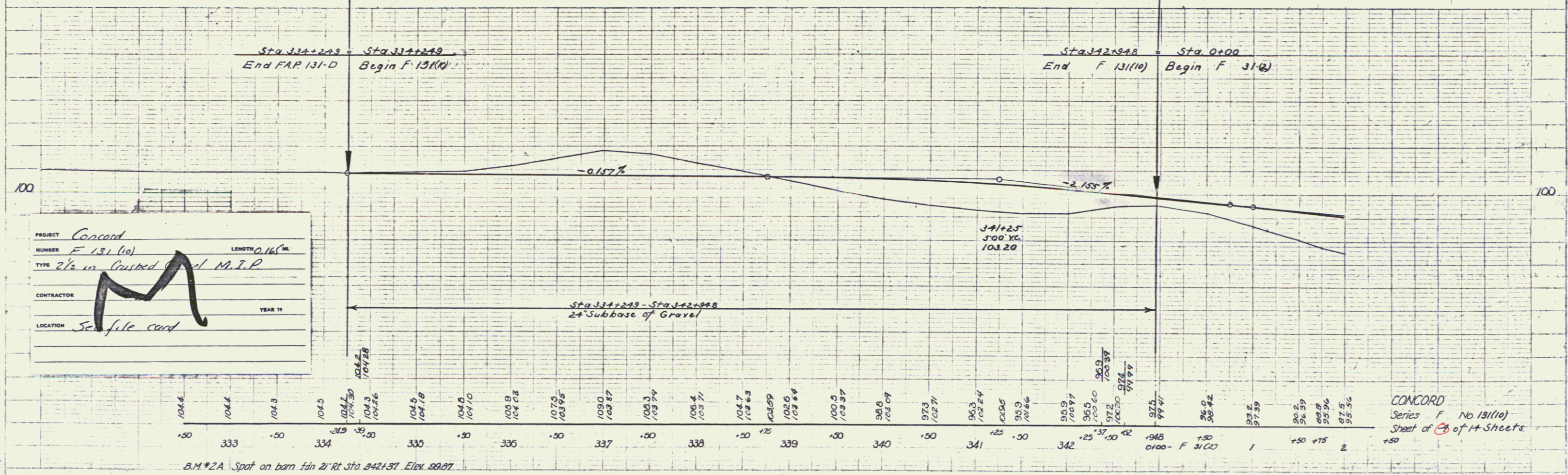
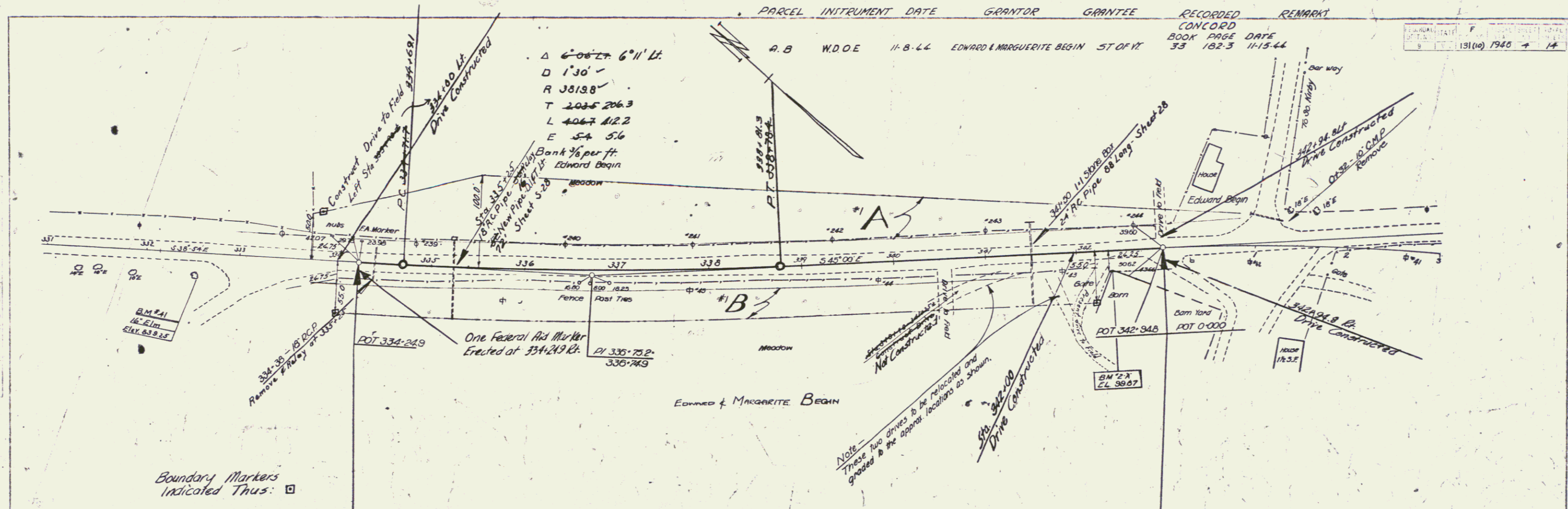
RECOMMENDED FOR APPROVAL
DISTRICT ENGINEER
PUBLIC ROADS ADMINISTRATION
FEDERAL WORKS AGENCY

APPROVED
DISTRICT ENGINEER
PUBLIC ROADS ADMINISTRATION
FEDERAL WORKS AGENCY

APPROVED July 29, 1946
DISTRICT HIGHWAY ENGINEER

APPROVED May 14, 1945
DISTRICT HIGHWAY COMMISSIONER

SERIES F No. 131(10) FILED
SHEET 1 OF 14



PROJECT Concord
 NUMBER F 131(10) LENGTH 0.16 MI.
 TYPE 2 1/2 in. Curbed 14' M.I.P.
 CONTRACTOR M
 LOCATION See file card

CONCORD
 Series F No 131(10)
 Sheet of 14 of 14 Sheets