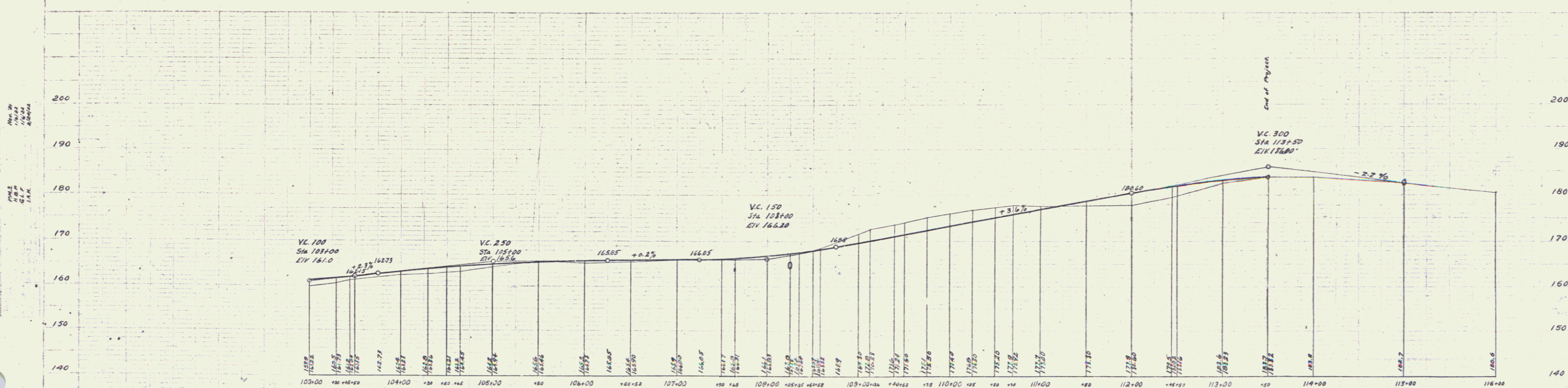
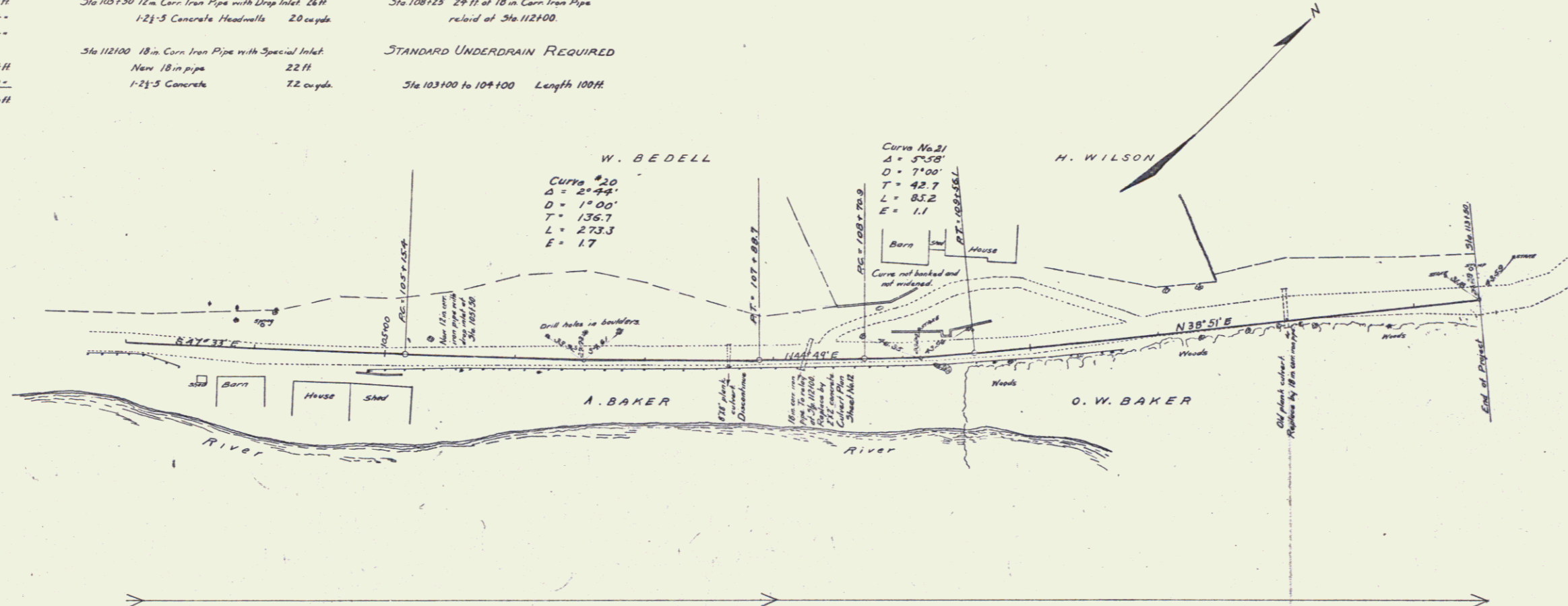


GUARD RAIL REQUIRED
ON LEFT
 Sta 105138 to 105162 Length 24H
 Sta 108113 to 108137 " 24"
 Sta 111188 to 112112 " 24"
ON RIGHT
 Sta 103100 to 103139 Length 39H
 Sta 104185 to 112185 " 800"
TOTAL THIS SHEET 906H

NEW CULVERTS REQUIRED
 Sta 105150 12 in. Corr. Iron Pipe with Drop Inlet 26H
 1-2 1/2 Concrete Headwalls 20 cu yds
 Sta 112100 18 in. Corr. Iron Pipe with Special Inlet
 New 18 in. pipe 22H
 1-2 1/2 Concrete 22 cu yds

RELAYING PIPE CULVERTS
 Sta 108125 24 H of 18 in. Corr. Iron Pipe
 relaid at Sta 112100
STANDARD UNDERDRAIN REQUIRED
 Sta 103100 to 104100 Length 100H

FED. ROAD DIST. NO.	STATE	FED. AID PROJ. NO.	FISCAL YEAR	SHEET NO.	TOTAL SHEETS
9	VT.	31	1951	10	42



B.M. No. 15 Spike in pole on right of Sta 107+45 Elev. 161.20.
 B.M. No. 16 Spike in rest of 16" Diack Cherry on left of Sta 111+34 Elev. 179.45