

CULVERT REPAIRS REQUIRED

Sta 81+85 Catch basin with grate, connecting with old 10" tile culvert.
 1-2 1/2" Concrete 2.0 cu yds.
 Drop Inlet Grate 1.

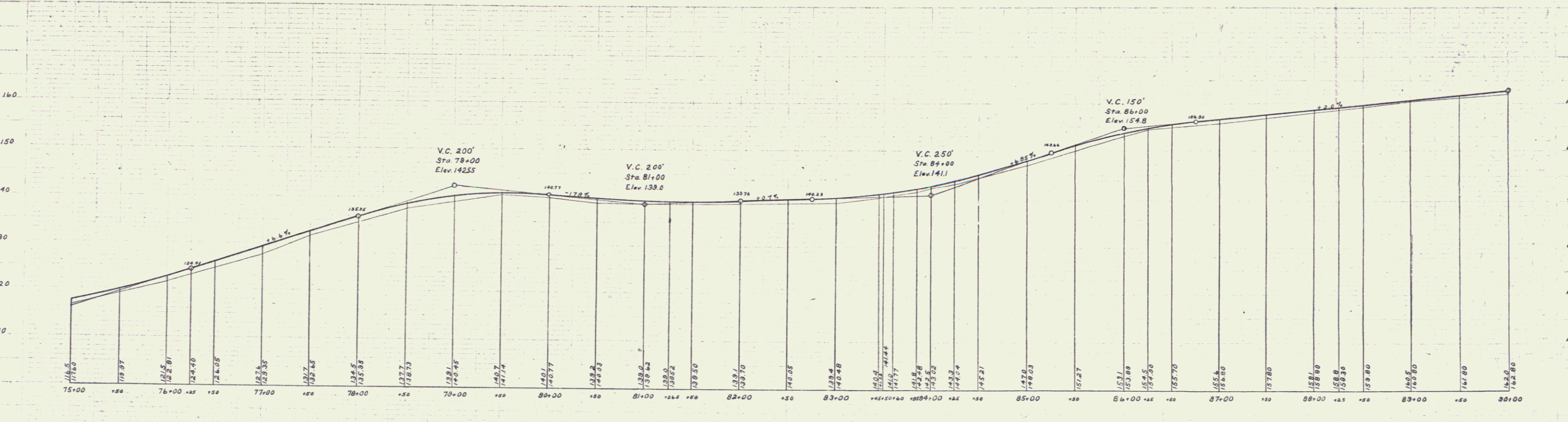
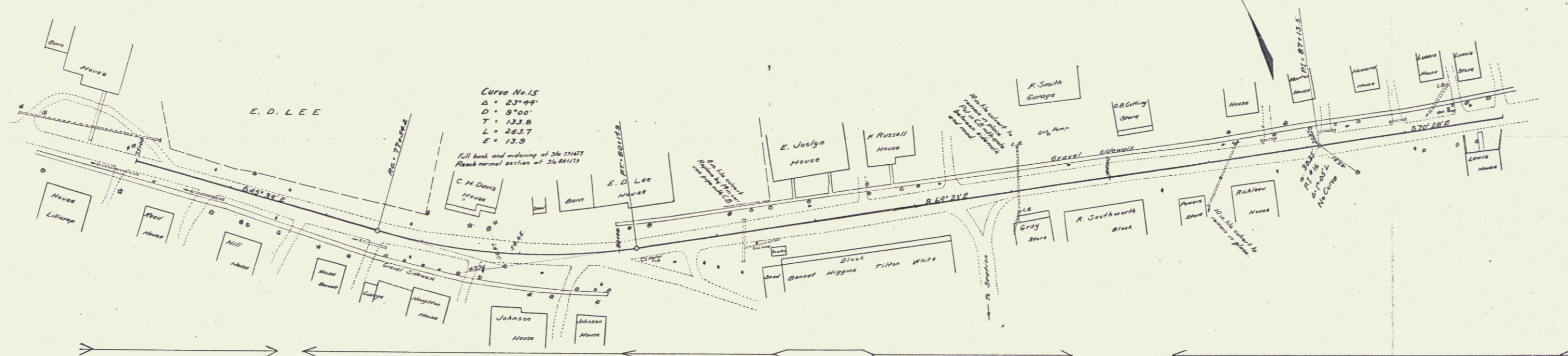
NEW CULVERTS REQUIRED

Sta 81+26.5 14" Con. Iron Pipe and Catch Basin with Grate.
 From inlet to catch basin 28 ft.
 From catch basin to outlet 16 ft.
 1-2 1/2" Concrete 3.2 cu yds.
 Drop Inlet Grate 1.

SUB BASE REQUIRED

Sta. 78+00 to 83+45 Length 5+45 ft.

FED. ROAD DIST. NO.	STATE	FED. AID PROJ. NO.	FISCAL YEAR	SHEET NO.	TOTAL SHEETS
9	VT.	31	1927	8	42



B.M. No. 11 NW corner of foundation on gasoline pump Sta. 81+38 Elev. 139.58
 B.M. No. 12 Top granite step on W. end O.B. Cutting's store Sta. 85+30 Elev. 148.47
 B.M. No. 13 Top concrete ref. wall next to piazza Lewis house Sta 88+57 Elev. 153.44