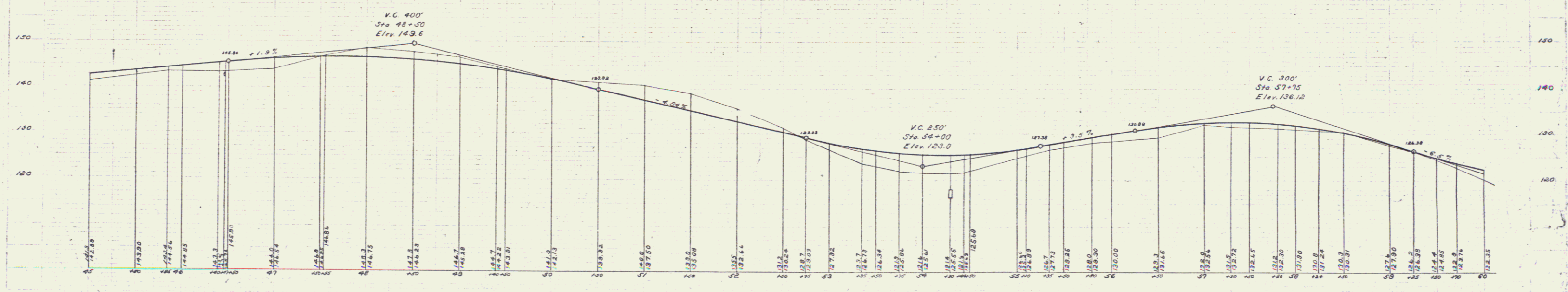
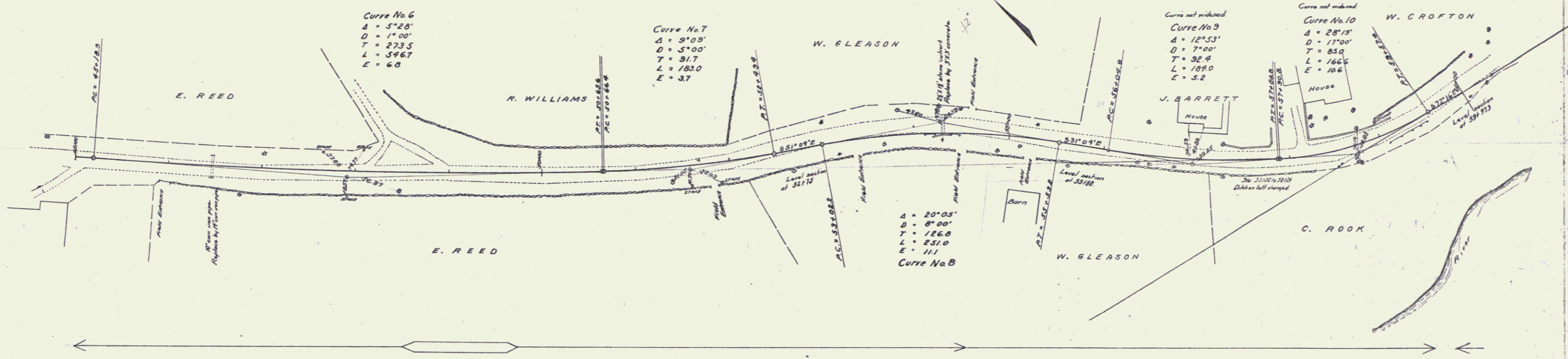


**GUARD RAIL REQUIRED**  
**ON LEFT**  
 Sta 96135 to 96159 Length 24 ft  
 Sta 33104 to 33136 - 192 -  
 Sta 39190 to 40100 - 10 -  
**ON RIGHT**  
 Sta 96135 to 96159 Length 24 ft  
 Sta 33104 to 33136 - 192 -  
 Sta 38120 to 40100 - 180 -  
**TOTAL THIS SHEET 622 ft**

**NEW CULVERTS REQUIRED**  
 Sta 96147 Min. Cor. Iron Pipe 30 ft  
 1-21-5 Concrete Headwalls 10 cu yds.  
 Sta 39130 3'x3' Concrete 48 ft  
 1-24 Concrete 12.8 cu yds.  
 1-21-3 - 16.5 -

FED. ROAD DIST. NO.	STATE	FED. AID FUNDING YEAR	ISSUED YEAR	SHEET NO.	TOTAL SHEETS
9	VT.	31	1921	6	42



BM No 6 Spike on beam side 36" Elev. 137.41  
 BM No 7 Small drill hole top surface emp. Sta 53+62 Elev. 124.57  
 BM No 8 Small drill hole top concrete retaining wall east end Sta 58+93 Elev. 133.43