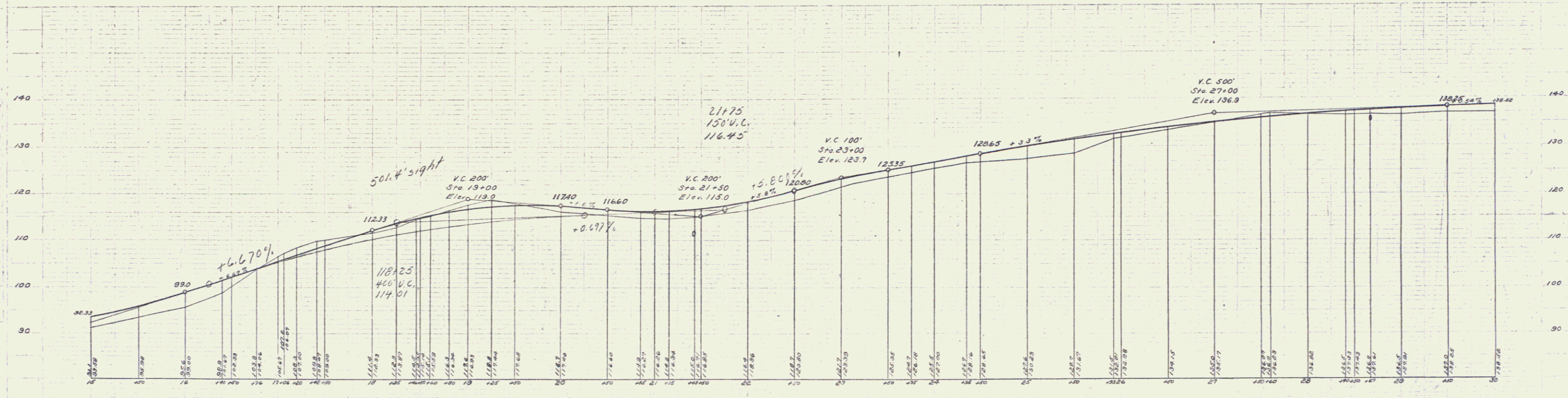
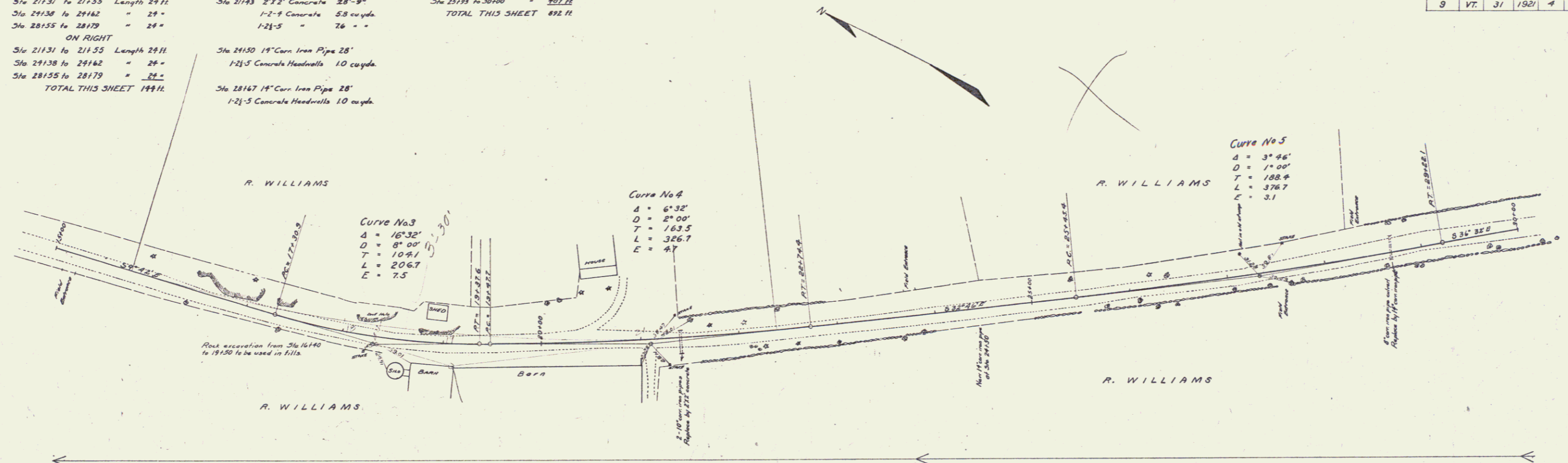


GUARD RAIL REQUIRED
ON LEFT
Sta 21131 to 21155 Length 24 ft.
Sta 29138 to 29162 = 24'
Sta 28155 to 28179 = 24'
ON RIGHT
Sta 21131 to 21155 Length 24 ft.
Sta 29138 to 29162 = 24'
Sta 28155 to 28179 = 24'
TOTAL THIS SHEET 144 ft.

NEW GULVERTS REQUIRED
Sta 21143 2'x2' Concrete 25'-9"
1-2-8 Concrete 5.8 cu yds.
1-2-5 = 76 --
Sta 21150 14" Cor. Iron Pipe 28'
1-2-5 Concrete Headwalls 10 cu yds.
Sta 28167 14" Cor. Iron Pipe 28'
1-2-5 Concrete Headwalls 10 cu yds.

SUB BASE REQUIRED
Sta 19150 to 29135 Length 985 ft.
Sta 25119 to 30100 = 491 ft.
TOTAL THIS SHEET 892 ft.

FED. ROAD DIST. NO.	STATE	FISCAL YEAR	SHEET NO.	TOTAL SHEETS
9	VT.	31 1927	4	42



B.M. 3 Baseboard North Easterly corner of R. Williams barn. Elev. 116.44

3 3