

INDEX OF SHEETS

SHEET NO.	TITLE PAGE
1	TYPICAL CROSS-SECTION OF IMPROVEMENT
2	PAVING AND FINISHING TABLES
3	PLAN AND PROFILE SHEETS
4	STANDARDS FOR CURVE SHEET 3-30 GROUND PAIR
5	STANDARDS FOR CURVE SHEET 3-30 GROUND PAIR
6	STANDARDS FOR CURVE SHEET 3-30 GROUND PAIR

PROJECT NO.	STATE	FED. AID PROJ. NO.	FISCAL YEAR	CONTRACT NO.	SHEET NO.
9	VT	E-131-D	1932	7	1

STATE OF VERMONT
STATE HIGHWAY DEPARTMENT

PLAN AND PROFILE OF PROPOSED
STATE HIGHWAY

FEDERAL AID PROJECT
P.O.# 99R149

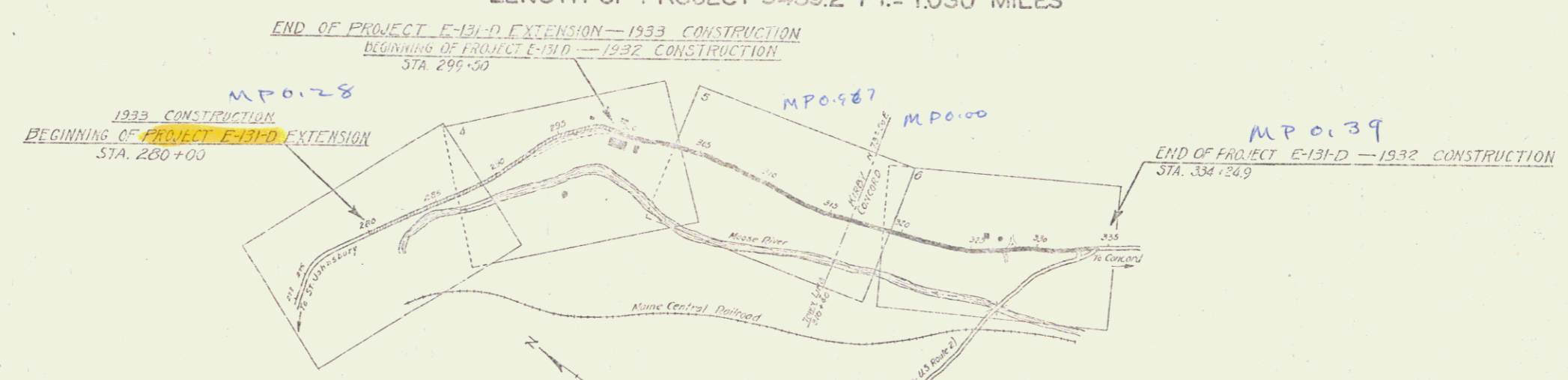
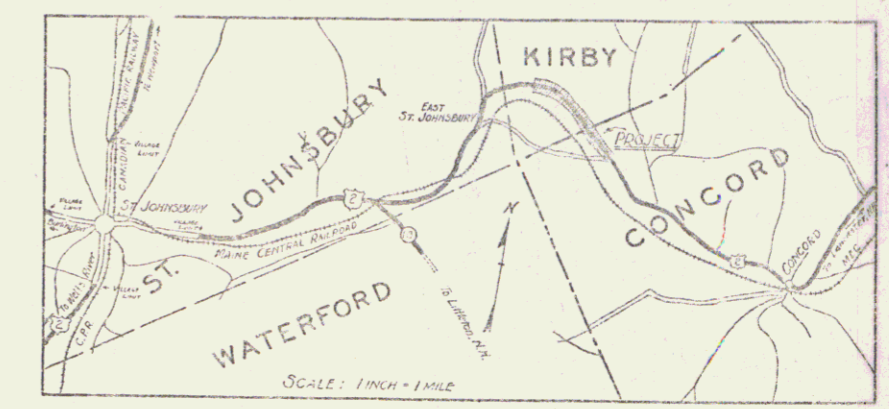
TOWNS OF KIRBY-CONCORD

ST. JOHNSBURY, VT.-LANCASTER, N.H. ROAD

FROM A POINT 2000 FT. N. FROM RESIDENCE OF FRED PARSONS
SOUTH-EASTERLY 5439.2 FEET TO THE JUNCTION WITH
FORMER U.S. ROUTE 2 TO EAST ST. JOHNSBURY

LENGTH OF PROJECT 5439.2 FT. = 1.030 MILES

POOR ORIGINAL COPY



CONVENTIONAL SIGNS

[Symbol]	GROUND ELEVATION
[Symbol]	GRADE ELEVATION

CURVE DATA

[Symbol]	DEFLECTION ANGLE	Δ
[Symbol]	DEGREE OF CURVE	D
[Symbol]	RADIUS OF CURVE	R
[Symbol]	TANGENT DISTANCE	T
[Symbol]	LENGTH OF CURVE	L
[Symbol]	EXTERNAL DISTANCE	E
[Symbol]	POINT OF INTERSECTION	P. I.
[Symbol]	POINT OF CURVE	P. C.
[Symbol]	POINT OF TANGENT	P. T.
[Symbol]	POINT ON TANGENT	P. O. T.

SCALES -
TITLE 1"=500'
PLAN 1"=50'
PROFILE 1"=10'

These plans are subject to such revisions as may be required by the Bureau of Public Roads and the Commissioner of Highways.
Construction is to be carried on in accordance with the plans and standard road and bridge specifications of 1930 including all subsequent approved revisions, the National Recovery Act special provisions, and such revised specifications and special provisions as are submitted with the plans.

APPROVED: Sept 6, 1932
H. S. August
SUBMITTED BY ORDER OF THE STATE HIGHWAY BOARD

RIGHT-OF-WAY DIVISION
TOWN FILE
PERPETUAL
Town of US2
(To Be Returned To R.O.W. Division)

RECOMMENDED [Signature]
DISTRICT ENGINEER BUREAU OF PUBLIC ROADS
RECOMMENDED FOR APPROVAL [Signature]
CHIEF ENGINEER BUREAU OF PUBLIC ROADS
APPROVED [Signature]
DIRECTOR BUREAU OF PUBLIC ROADS

APPROVED: Sept 7, 1932
SERIES F NO. 440 FILED
SHEET 1 OF 1

US2

US2

INDEX OF SHEETS

SHEET NO 1	TITLE PAGE
2	TYPICAL CROSS-SECTION OF IMPROVEMENT (2 1/2" GRAVEL MIXED-IN-PLACE SURFACE COURSE WITH CUT-BACK GRANULITE SAND 1/2" AND 3/4" SIFTS)
3	BANKING AND WIDENING TABLES
4-7	PLAN AND PROFILE SHEETS
8	STANDARD SHEET 530; GUARD RAIL
9	" " " " 540; BARRICADES, SIGNS & LIGHTS
10-19	CROSS-SECTIONS

Standard sheet 530 approved by the Chief Engineer on Aug 15, 1933.

FED. ROAD DIST. NO.	STATE	FED. AID PROJ. NO.	FIN. AC. DIST. NO.	SHEET NO.	TOTAL SHEETS
9	VT.	131-D	1536	1	19

STATE OF VERMONT
STATE HIGHWAY DEPARTMENT

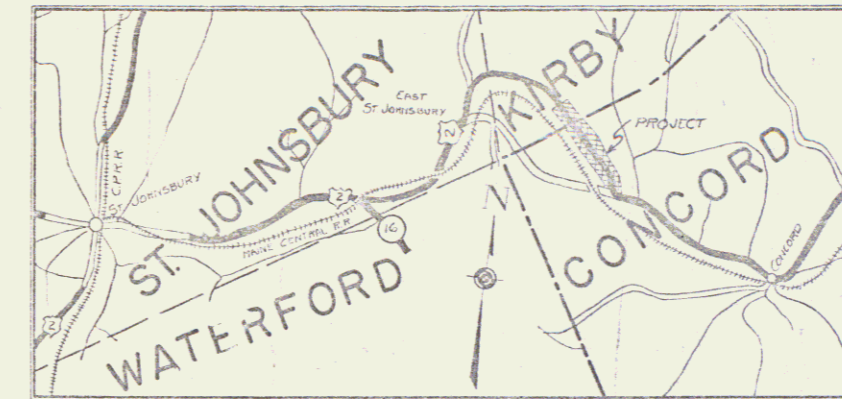
PLAN AND PROFILE OF PROPOSED
STATE HIGHWAY

FEDERAL AID PROJECT

TOWNS OF KIRBY-CONCORD

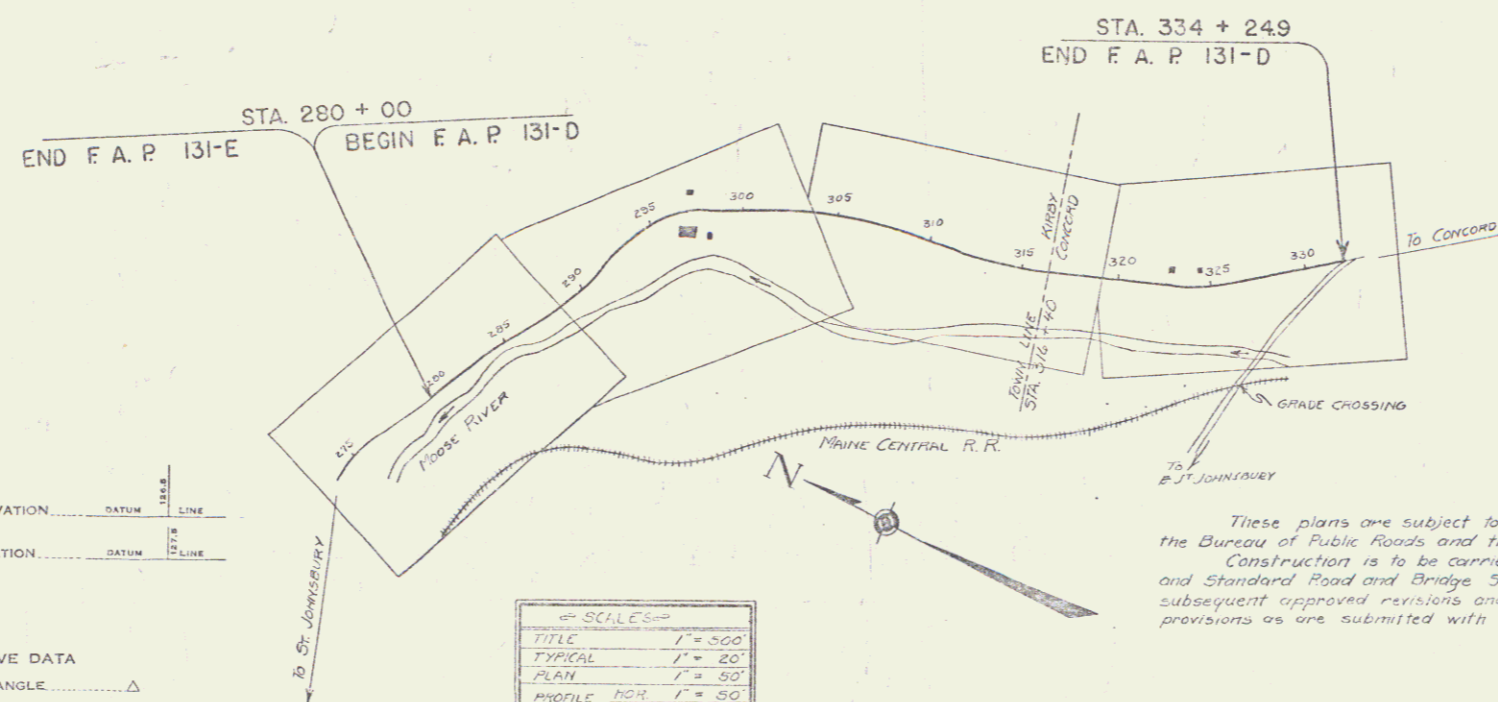
ST. JOHNSBURY, VT.-LANCASTER, N.H. ROAD

FROM 1100 FT. EAST OF THE RESIDENCE OF CHARLES BIRCH,
SOUTHEASTERLY 1.029 MILES, TO 824± FT. SOUTH OF THE RES-
IDENCE OF RAYMOND HEATH.



SCALE: 1 INCH = 1 MILE

LENGTH OF PROJECT 5438.3 FT = 1.029 MILES



These plans are subject to such revisions as may be required by the Bureau of Public Roads and the Commissioner of Highways. Construction is to be carried on in accordance with the plans and Standard Road and Bridge Specifications of 1930 including all subsequent approved revisions and revisions specifications and special provisions as are submitted with the plans.

CONVENTIONAL SIGNS

- COUNTY LINE
- TOWN LINE
- FENCE LINE
- STONE WALL
- UNFENCED CITY
- GUARD RAIL
- TRAVELED ROAD
- RAILROAD
- RETAINING WALL
- CENTER LINE
- SURVEY LINE
- CULVERT
- PROP. INLET
- TROLLEY POLE
- POWER POLE
- TELEPHONE POLE
- TREES
- HEDGE

- GROUND ELEVATION
- GRADE ELEVATION

- CURVE DATA
- DEFLECTION ANGLE
 - DEGREE OF CURVE
 - RADIUS OF CURVE
 - TANGENT DISTANCE
 - LENGTH OF CURVE
 - EXTERNAL DISTANCE
 - POINT OF INTERSECTION
 - POINT OF CURVE
 - POINT OF TANGENT
 - POINT ON TANGENT

SCALES

TITLE	1" = 500'
TYPICAL	1" = 20'
PLAN	1" = 50'
PROFILE	1" = 10'
CROSS-SECTIONS	1" = 5'

APPROVED: May 20, 1935
H. S. Chagnon
COMMISSIONER OF HIGHWAYS

SUBMITTED BY ORDER OF THE STATE HIGHWAY BOARD

RECOMMENDED [Signature] DISTRICT ENGINEER BUREAU OF PUBLIC ROADS
RECOMMENDED FOR APPROVAL [Signature] CHIEF ENGINEER BUREAU OF PUBLIC ROADS
APPROVED [Signature] DIRECTOR BUREAU OF PUBLIC ROADS

CORRECT: May 20, 1935
G. B. [Signature]
ENGINEER
SERIES F.A.P. NO. 131-D FILED
SHEET 1 OF 19

352 2

2ND STAGE
WOOD GUARD RAIL REQUIRED

STA	LT	RT
276+00	24'	-
279+00	24'	24'

2ND STAGE
GUIDE POSTS OF WOOD REQUIRED

STA	LT	RT
281+00	1'	1'
284+00	1'	1'

2ND STAGE
CABLE GUARD RAIL REQUIRED

STA	LT	RT	CONC'D	PI 100'
279+00-279+50	15'	20'	170'	-
279+50-279+100	15'	20'	170'	-
279+100-279+150	15'	20'	170'	-
279+150-279+200	15'	20'	170'	-
279+200-279+250	15'	20'	170'	-

1ST STAGE
NEW REIN. CONCRETE PIPE CULVERTS REQUIRED

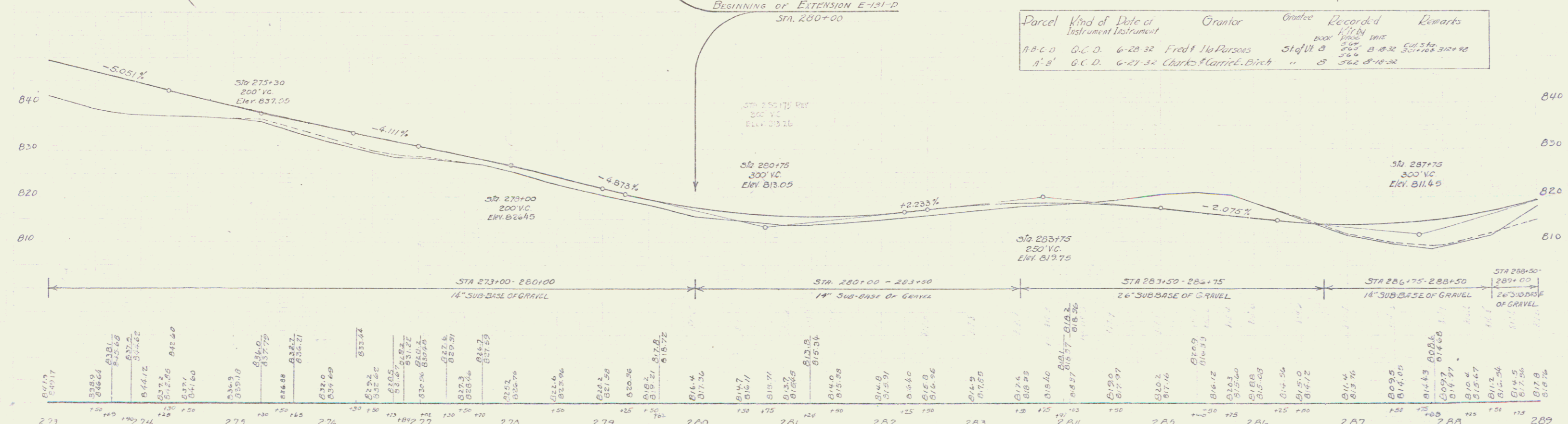
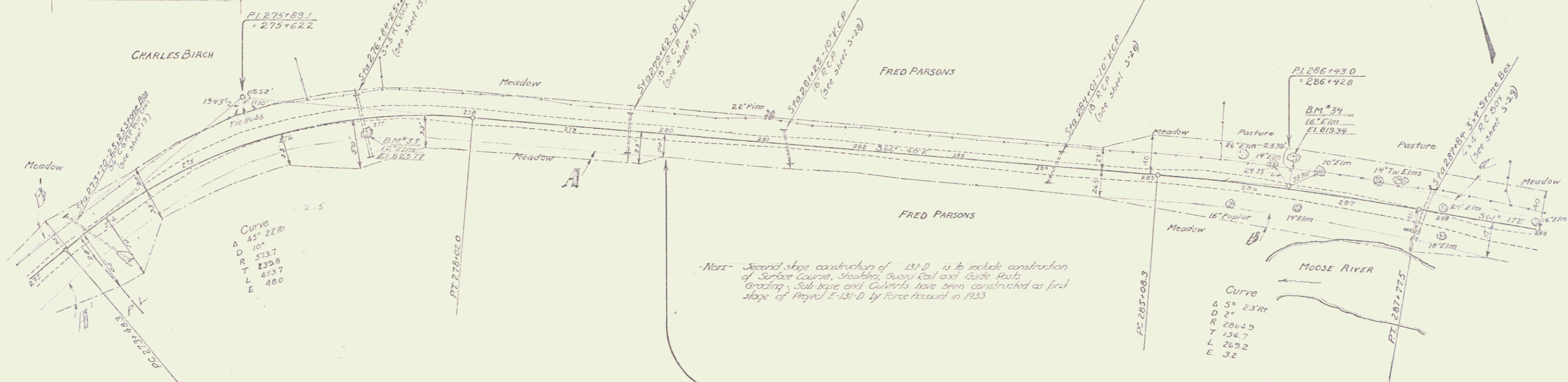
STA	DIA	LEN	CONC'D	STEEL	C.P.M.
279+62	18"	48'	-	-	3.54
281+23	18"	44'	-	-	3.54
284+01	18"	36'	-	-	3.57

1ST STAGE
NEW REIN. CONCRETE BOX CULVERTS REQUIRED

STA	DIA	LEN	CONC'D	STEEL	C.P.M.
276+84	4'x4'	33.0'	-	-	2.900
276+84	3'x3'	25.4'	-	-	2.463

CORR. GALV. METAL PIPE (AS P.C.T.D.) CULVERTS

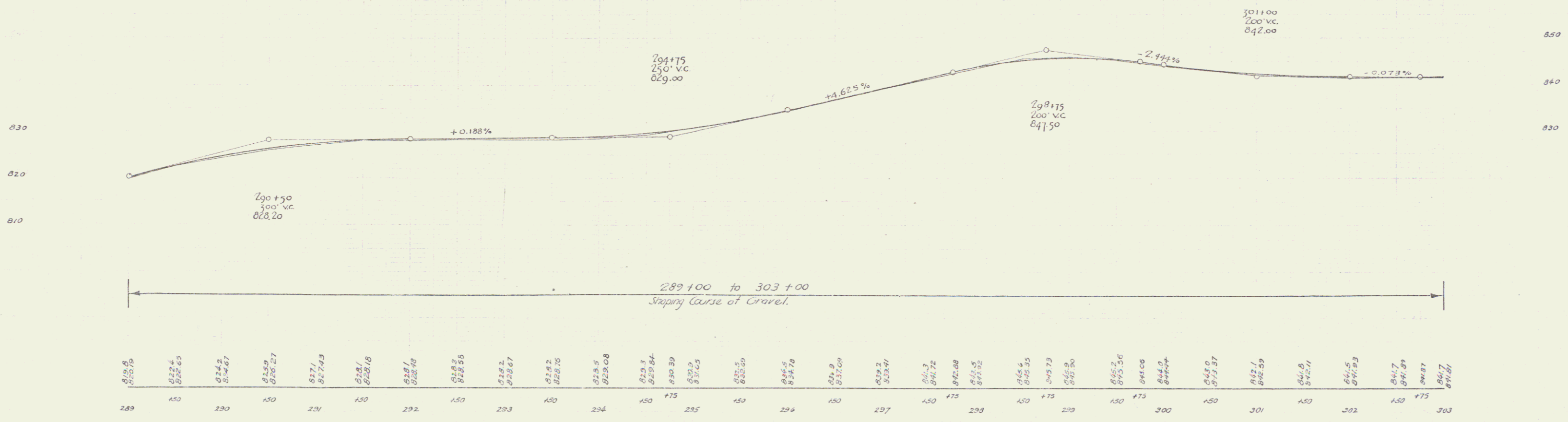
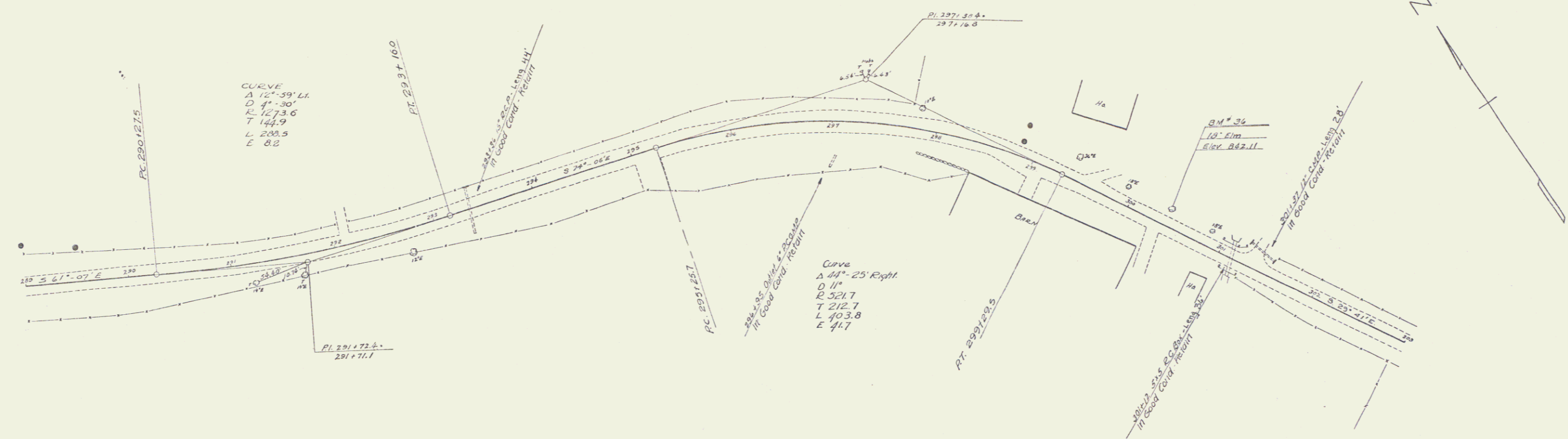
STA	DIA	LEN	CONC'D	STEEL	C.P.M.
273+70	36"	50'	-	-	6.001



Parcel	Kind of Instrument	Date of Instrument	Grantor	Grantee	Recorded	Remarks
A.B.C.D.	O.C.D.	6-28-32	Fred & M. Parsons	State of B.	300' B.C.D.	50' 0" 30' 100' 312+75
A.B.	O.C.D.	6-27-32	Charles & Carrie Birch	"	362'	8-18-32

B.M. 33 Spike in Root 12" Elm 125' RT, Sta 276+87 El 825.77
 B.M. 34 " " " 16" " 27' LT, Sta 286+41 El 819.34

SERIES F
 SHEET 4 OF 27 SHEETS
 B



B.M. 36 SPIKE IN ROOT 18 ELM 1/5' LT OF STA. 300+00 ELEV. 842.11

Series FAP No. 131-D
Sheet 5 of 19

5

2ND STAGE
WOOD GUARD RAILS REQUIRED

CULV. STA.	LT.	RT.
305+83	—	24'
310+53	24'	24'
312+98	24'	24'

2ND STAGE
GUIDE POSTS OF WOOD REQUIRED

CULV. STA.	LT.	RT.
305+83	1	—

1ST STAGE
NEW REINF CONCRETE PIPE CULVERTS REQUIRED

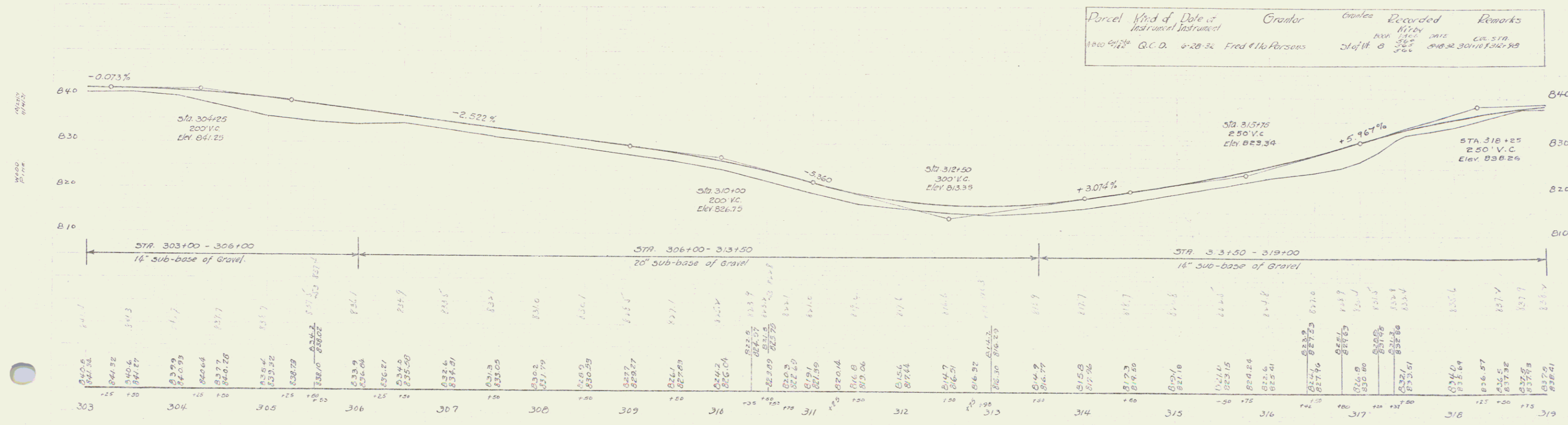
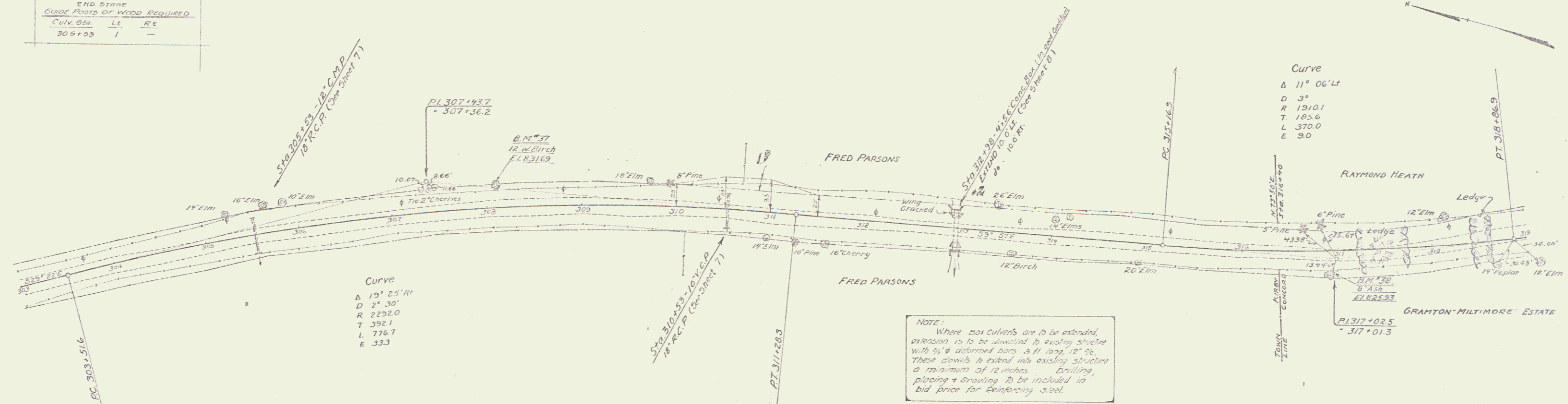
STA.	DIA.	LEN.	CONC. R.	SM.	C.R.M.
305+53	18"	44'	—	—	3.5 sp
310+33	18"	44'	—	—	3.5 sp

1ST STAGE
CULVERT REPAIRS REQUIRED

CULV. STA.	SIZE	CONC. R.	SM.
(Extension) 312+98 LT	36"	—	—
(Extension) 312+98 RT	42"	—	—

E 131-D 1932 24

Inland
ATC Numbers



Parcel	Kind of Data	Grantor	Books Recorded	Remarks
1400 412	Q.C.D.	6-28-32 Fred H. Parsons	1174 1175 1176 1177 1178 1179 1180 1181 1182 1183 1184 1185 1186 1187 1188 1189 1190	CA. STA. 418-22 3010-1300-95

B.M. #37 Spike in Root 12" W Birch 20' Lt Sta 308+09 E 1831.69
B.M. #38 " " " 8" Ash 21' Rt Sta 311+00 E 1825.93

SERIES F No E 131-D
SHEET 6 OF 24

7

END STAGE WOOD GUARD RAIL REQUIRED		
CULV. STA.	LT.	RT.
320+50	24'	24'
324+38	-	24'

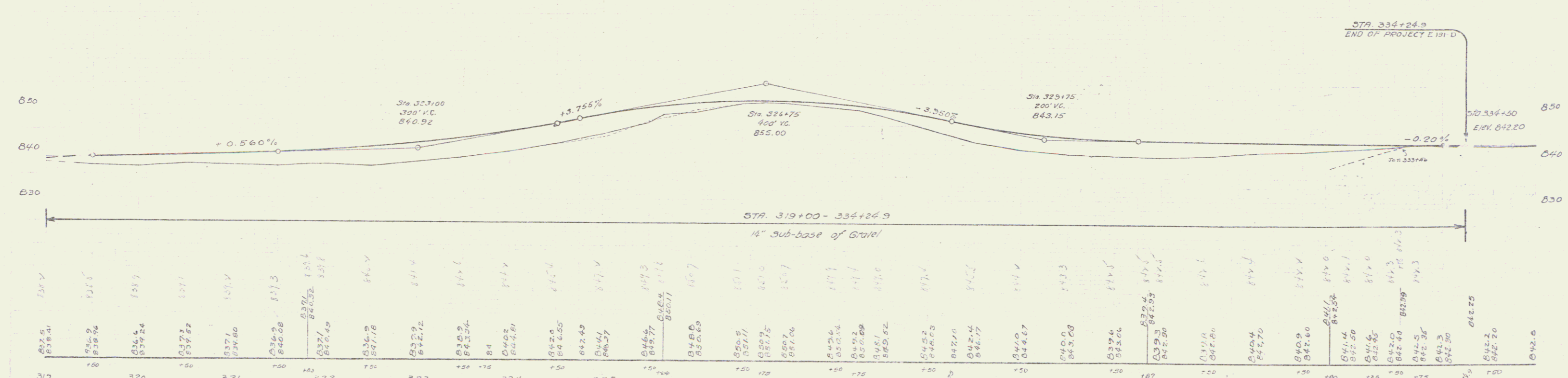
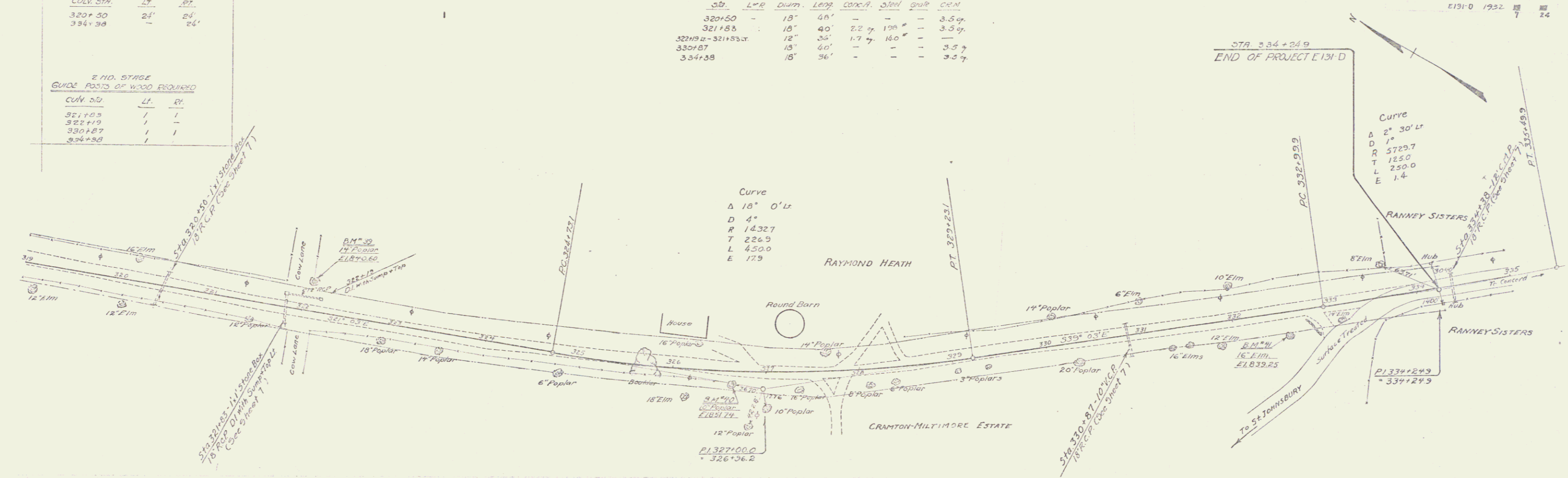
2 HD. STREE GUIDE POSTS OF WOOD REQUIRED		
CULV. STA.	LT.	RT.
321+25	1'	1'
322+15	1'	-
330+87	1'	1'
334+38	1'	-

1ST STAGE NEW REIN. CONCRETE PIPE CULVERTS REQUIRED						
STA.	L-R	DIAM.	LENG.	CONC. P.	SPAC.	GRIP
320+50	-	18"	40'	-	-	3.5'
321+88	-	18"	40'	2.2'	1.5'	3.5'
321+94-321+83.5	-	12"	36'	1.7'	1.0'	-
330+87	-	18"	40'	-	-	3.5'
334+38	-	18"	36'	-	-	3.5'

E131-D 1952 24

Road
Ac. Plan
1/2" = 100'

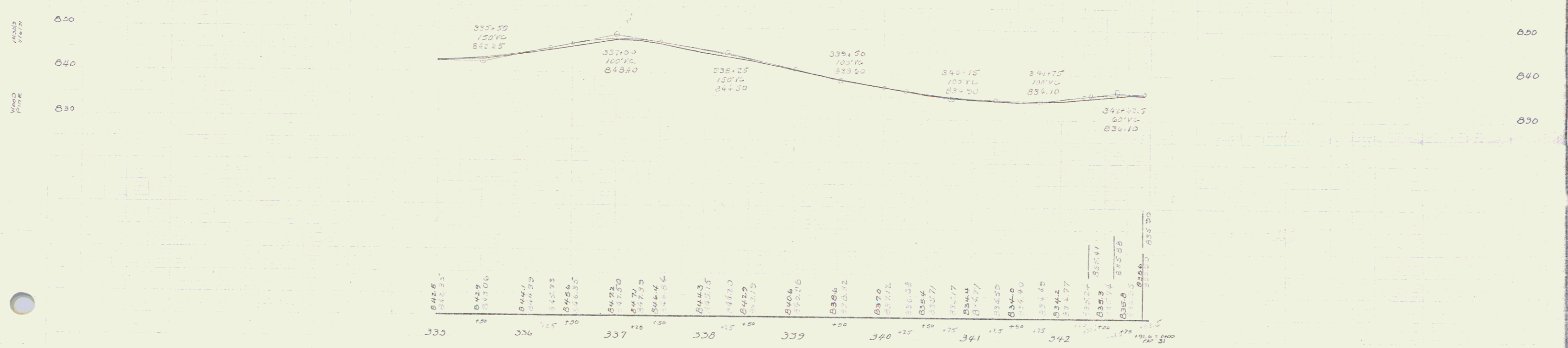
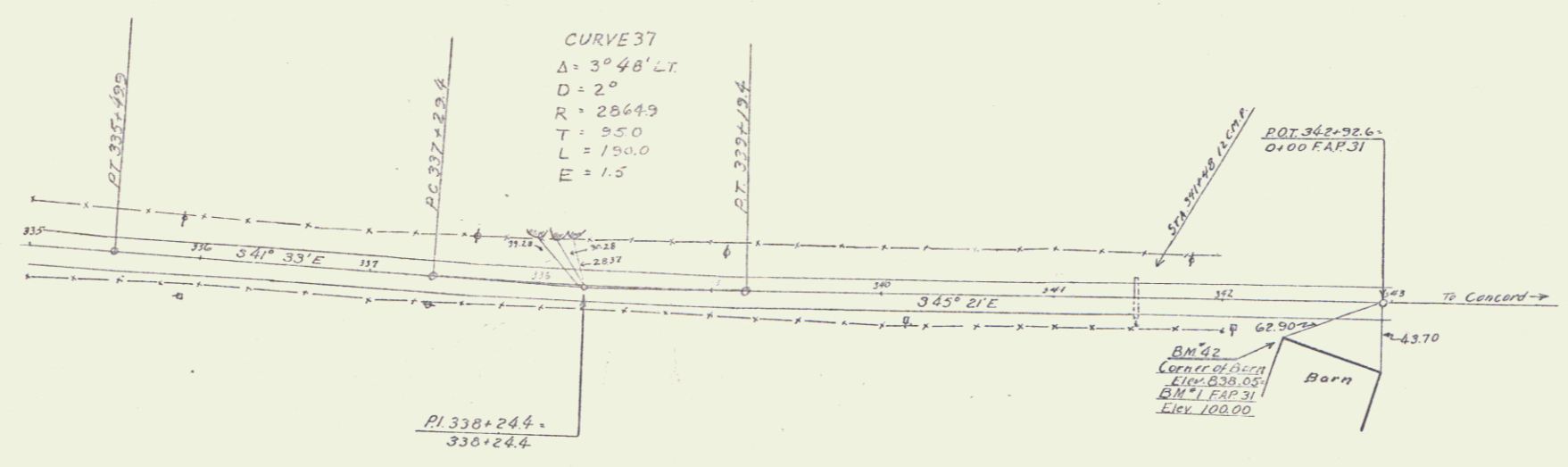
VERT
1" = 10'



B.M. #39 Spike in Roof 14" Poplar 30' LT Sta 322+01 E1,840.60
 B.M. #40 " " " " 10' " " 11.5' " " 326+62 E1,851.74
 B.M. #41 " " " " 16' Elm RR Rt. " 332+66 E1,839.25

SERIES F 176 E131-D
 SHEET 7 OF 24 SHEETS

9



BM #2 CORNER OF BARN 20.5 FT. 342+35 ELEV 838.05 = BM #1 OF FAP 31 ELEV 100.00