

2ND STAGE
WOOD GUIDE POSTS REQUIRED

CULV. STA.	LT.	RT.
305+83	—	24'
310+53	24'	24'
312+98	24'	24'

2ND STAGE
GUIDE POSTS OF WOOD REQUIRED

CULV. STA.	LT.	RT.
305+83	1	—

1ST STAGE
NEW REINF. CONCRETE PIPE CULVERTS REQUIRED

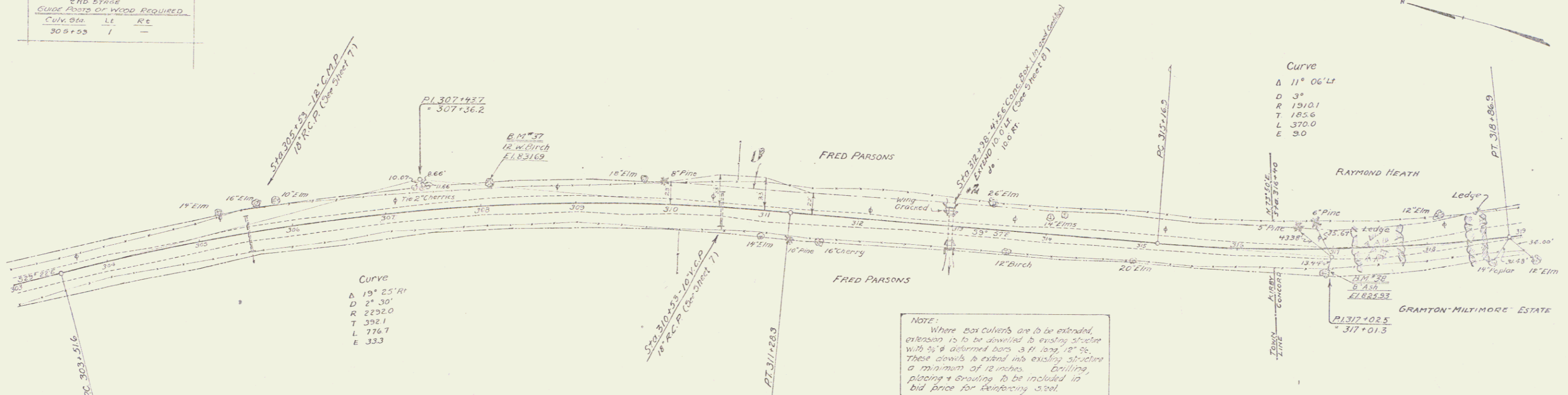
STA.	DIA.	LEN.	CONC. R.	SPAC.	CR.M.
305+53	18"	44'	—	—	3.5 sp.
310+33	18"	44'	—	—	3.5 sp.

1ST STAGE
CULVERT REPAIRS REQUIRED

CULV. STA.	SIZE	CONC. R.	SPAC.
(Extension) 312+98 LT.	34"	—	—
(Extension) 312+98 RT.	42"	—	—

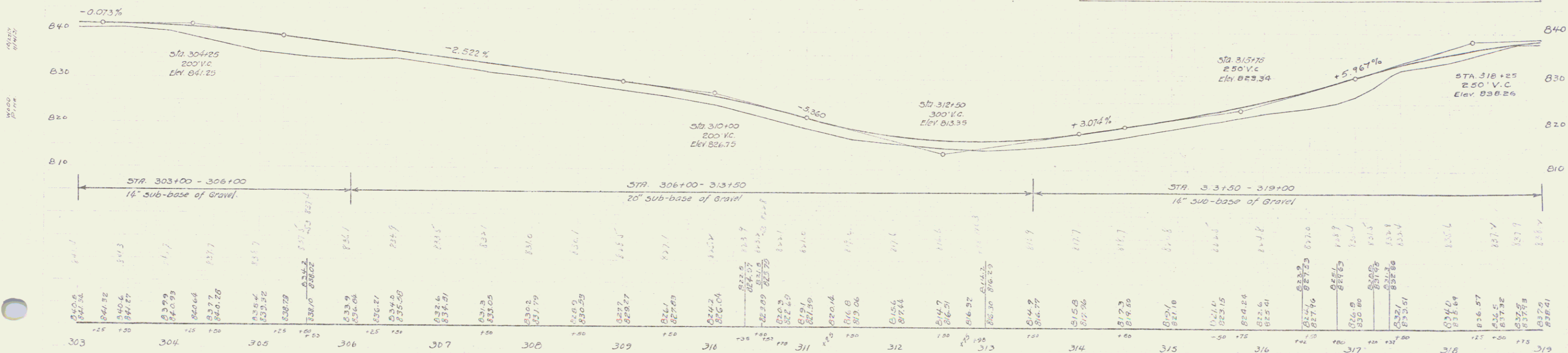
E 131-D 1932 24

Inland
A.C. Numbers



NOTE:
Where box culverts are to be extended, extension is to be dowelled to existing structure with 3/8\"/>

Parcel	Kind of Data	Date	Grantor	Books Recorded	Remarks
1400 412	Q.C.D.	6-28-32	Fred H. Parsons	1174 1175 1176	CA. STA. 310+80 TO 310+95



B.M. #37 Spike in Root 12' W Birch 20' Lt Sta. 308+09 Elev. 831.69
B.M. #38 " " " 8' Ash 21' Rt. Sta. 311+00 Elev. 825.93

SERIES F No. E 131-D
SHEET 6 OF 24

7