

WOOD GUARD RAIL REQUIRED

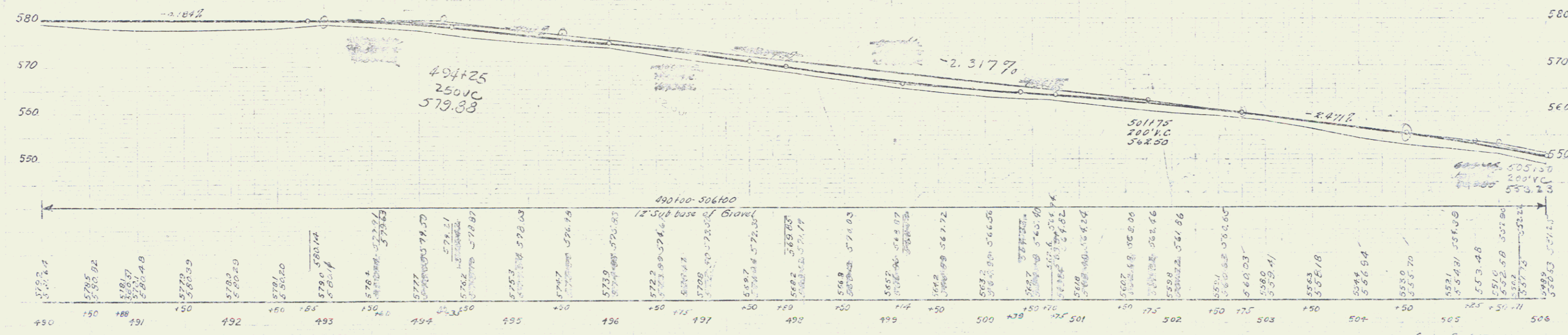
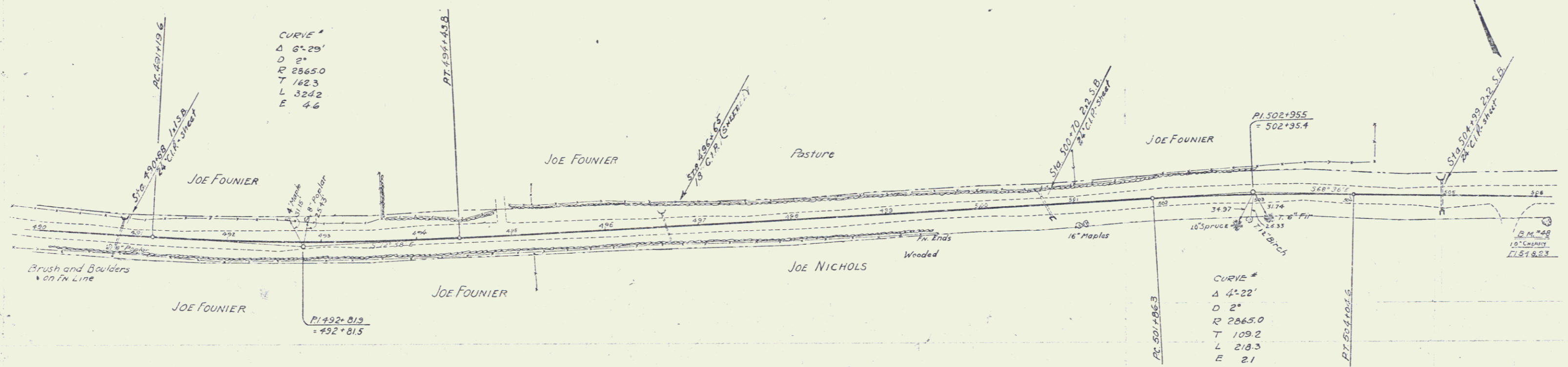
CULV STA.	LEFT	RIGHT
490+88	24'	24'
493+65	24'	24'
500+70	24'	24'
504+99	24'	24'

NEW CAST IRON PIPE CURVE(S) REQUIRED

Sta.	Diam.	Length	Conc. H.	Steel
490+88	24"	42'	1.3CY	27"
493+65	18"	36'	1.0	21"
500+70	24"	36'	2.4	34"
504+99	24"	36'	2.4	34"

STATE OF OHIO
 COUNTY OF CUYAHOGA
 137A 1931 29A 71

POOR ORIGINAL COPY



B.M. #48 12" C.M. near Sta 506+00 E. 548.23

Sta.	Elev.	Sta.	Elev.	Sta.	Elev.
490	579.24	495	575.31	500	568.28
491	579.5	496	576.7	501	568.28
492	579.57	497	577.1	502	568.28
493	579.6	498	577.5	503	568.28
494	579.63	499	577.9	504	568.28
495	579.66	500	578.3	505	568.28
496	579.69	501	578.7	506	568.28
497	579.72	502	579.1		
498	579.75	503	579.5		
499	579.78	504	579.9		
500	579.81	505	580.3		
501	579.84				
502	579.87				
503	579.9				
504	579.93				
505	579.96				
506	579.99				

Series F No. 131-A
 Sheet 29 of 71