

WOOD GUARD RAIL REQUIRED

STATION	LEFT	RIGHT
359+74	-	24'
362+27	24'	24'
366+00	-	24'
370+22	-	24'

CABLE GUARD RAIL REQUIRED

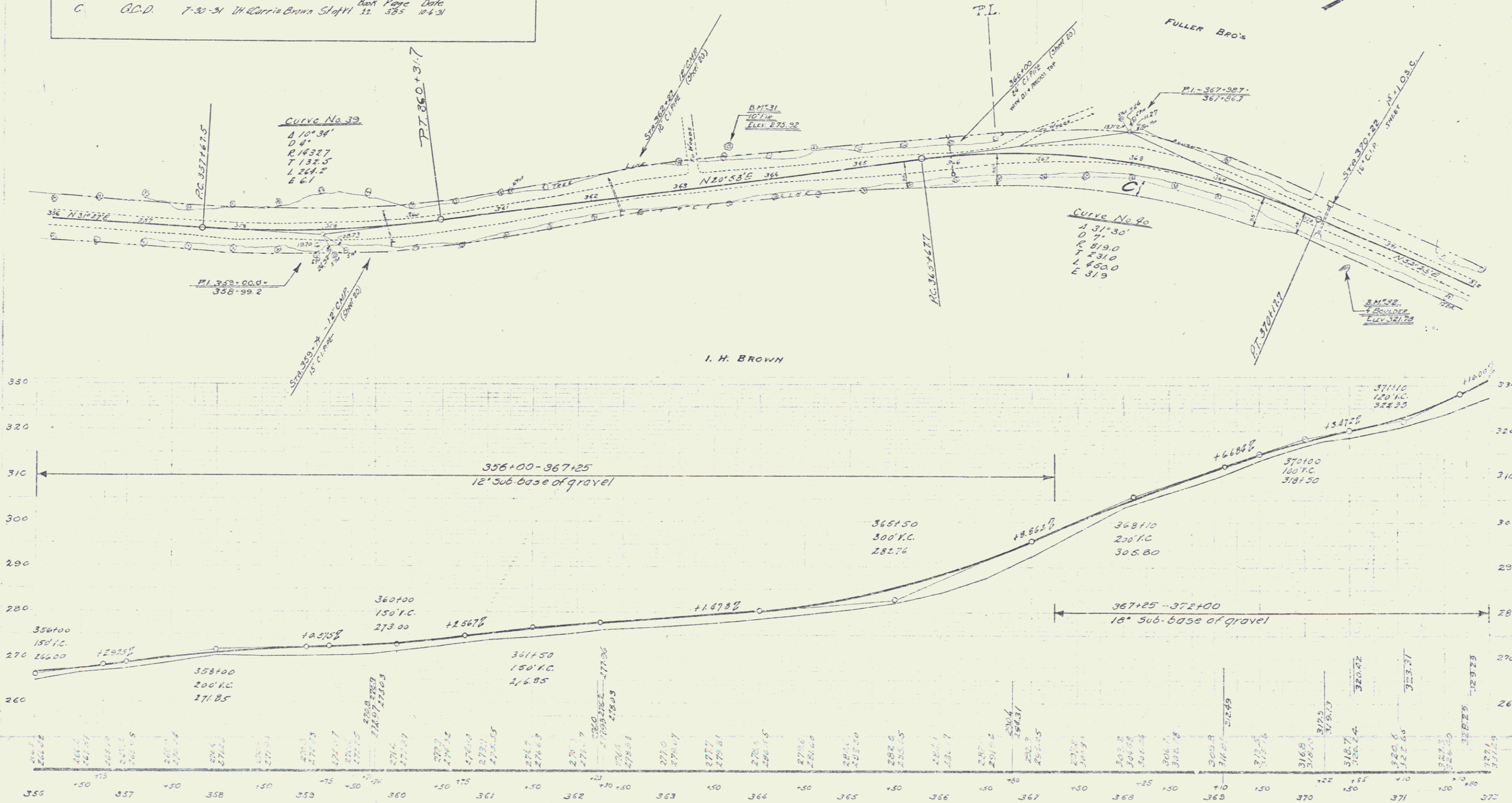
STATIONS	LENG.	CABLE	POSTS
365+80-366+44	144'	40'	184'
366+00-366+04	40'	40'	444'
370+10-372+00	190'	20'	210'

NEW CAST IRON PIPE CULVERTS REQUIRED

STATION	DIAM.	LENG.	CONC.	CONC.	REIN. STEEL
359+74	18"	39'	1.8 cy	-	73 lbs.
362+27	18"	39'	1.8 cy	-	73 lbs.
366+00	24"	35'	2.9 cy	-	174 lbs.
370+22	18"	35'	1.8 cy	-	51 lbs.

Parcel	Kind of Instrument	Date of Record	Grantor	Grantee	Recorded	Remarks
C	C.C.D.	7-30-31	I.H. Brown	Staff	32	385 10431

NEWMAN, PAGE & HADLEY



B.M. 31 SPIKE IN ROOT OF 10" FR. 37 FT. OF 5 1/2" 363+97 - ELEV. 273.92
 B.M. 32 TOP OF 4" BOULDER, 34 FT. RT. OF 319 370+68 - ELEV. 321.78

SERIES NO. 151-11
 SHEET NO. 71